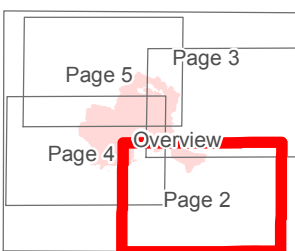
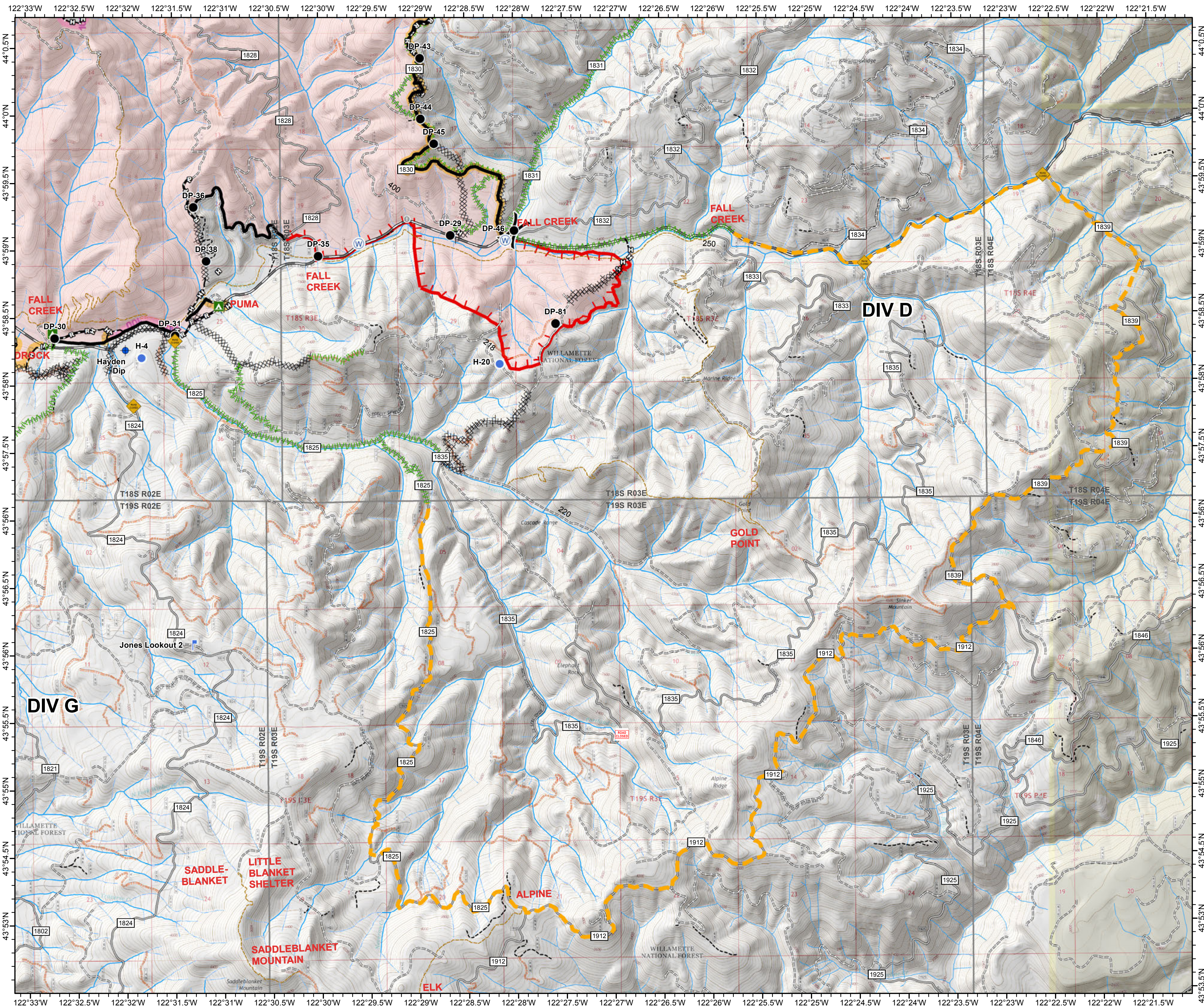
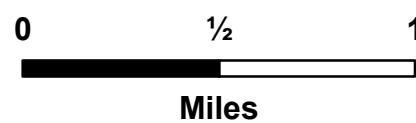


JONES FIRE OR-WIF-170191 IAP

Datum: North American 1983
09/21/2017
Day Shift
Perimeter as of: 09/17/17 @ 2329
Approx: 10,017 ac

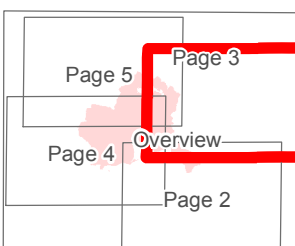


- Dip Site
- Drop Point
- Helispot
- Lookout
- Road Closure (Fire Traffic Only)
- Water Source
- Hazard Tree
- Uncontrolled Fire Edge
- Completed Line
- Completed Dozer Line
- Completed Hand Line
- Road as Completed Line
- Brushed Road
- Planned Fire Line
- SlideFS1835
- Mop-Up 25'-50'
- Mop-Up 100'

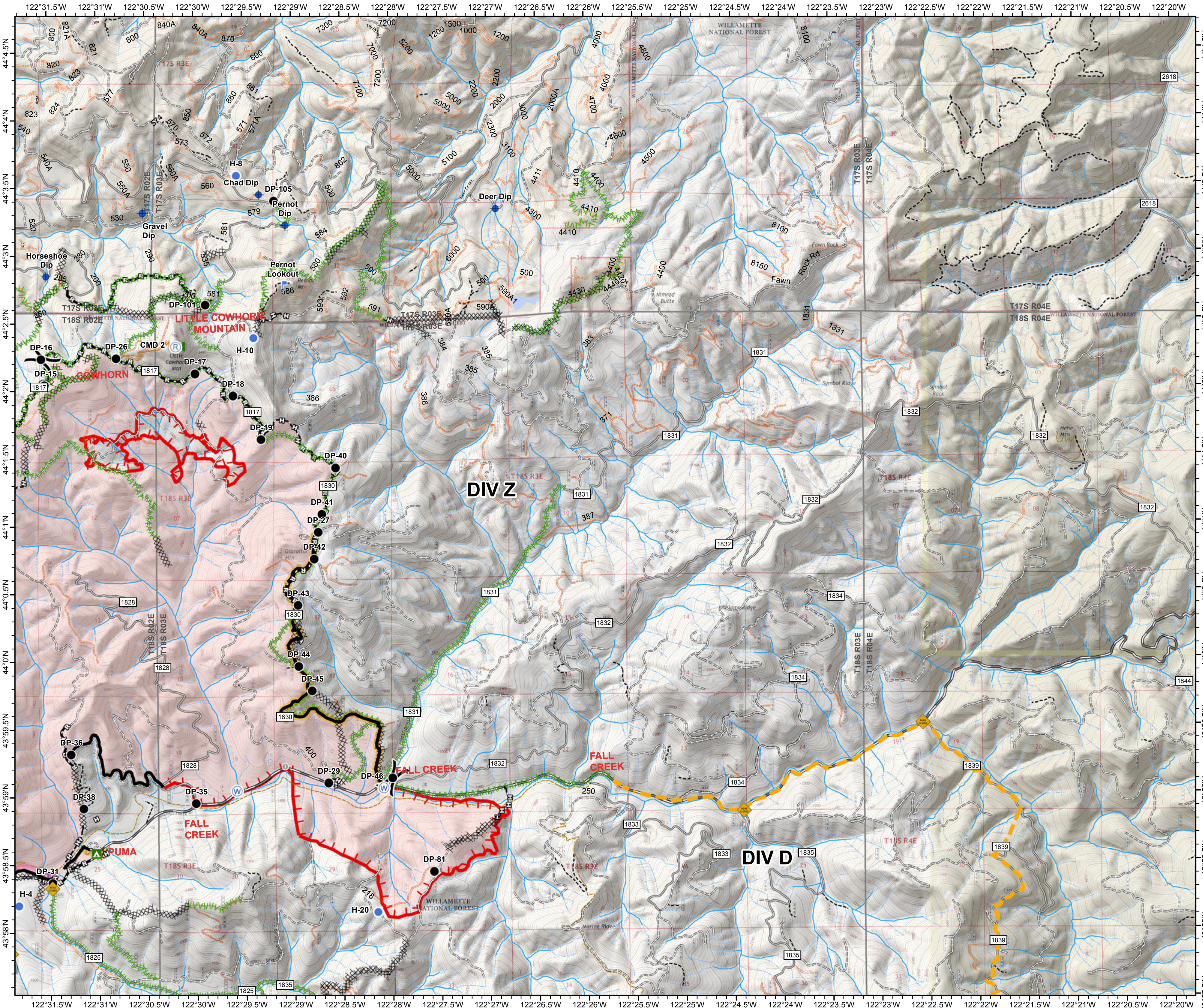
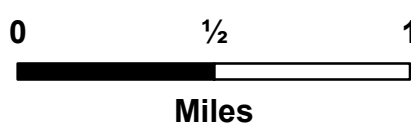


JONES FIRE OR-WIF-170191 IAP

Datum: North American 1983
09/21/2017
Day Shift
Perimeter as of: 09/17/17 @ 2329
Approx: 10,017 ac

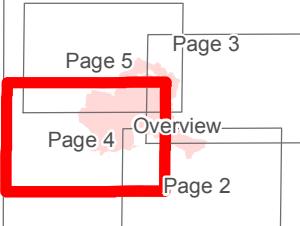


- Dip Site
- Drop Point
- Helispot
- ⌘ Lookout
- Ⓡ Repeater
- ◆ Road Closure (Fire Traffic Only)
- Ⓜ Water Source
- Hazard Tree
- ┌ Uncontrolled Fire Edge
- Completed Line
- ▤ Completed Dozer Line
- ⌘ Completed Hand Line
- ⌘ Road as Completed Line
- ▤▤▤ Brushed Road
- ▤▤▤ Planned Fire Line
- 50 Mop-Up 25'-50'
- 100 Mop-Up 100'

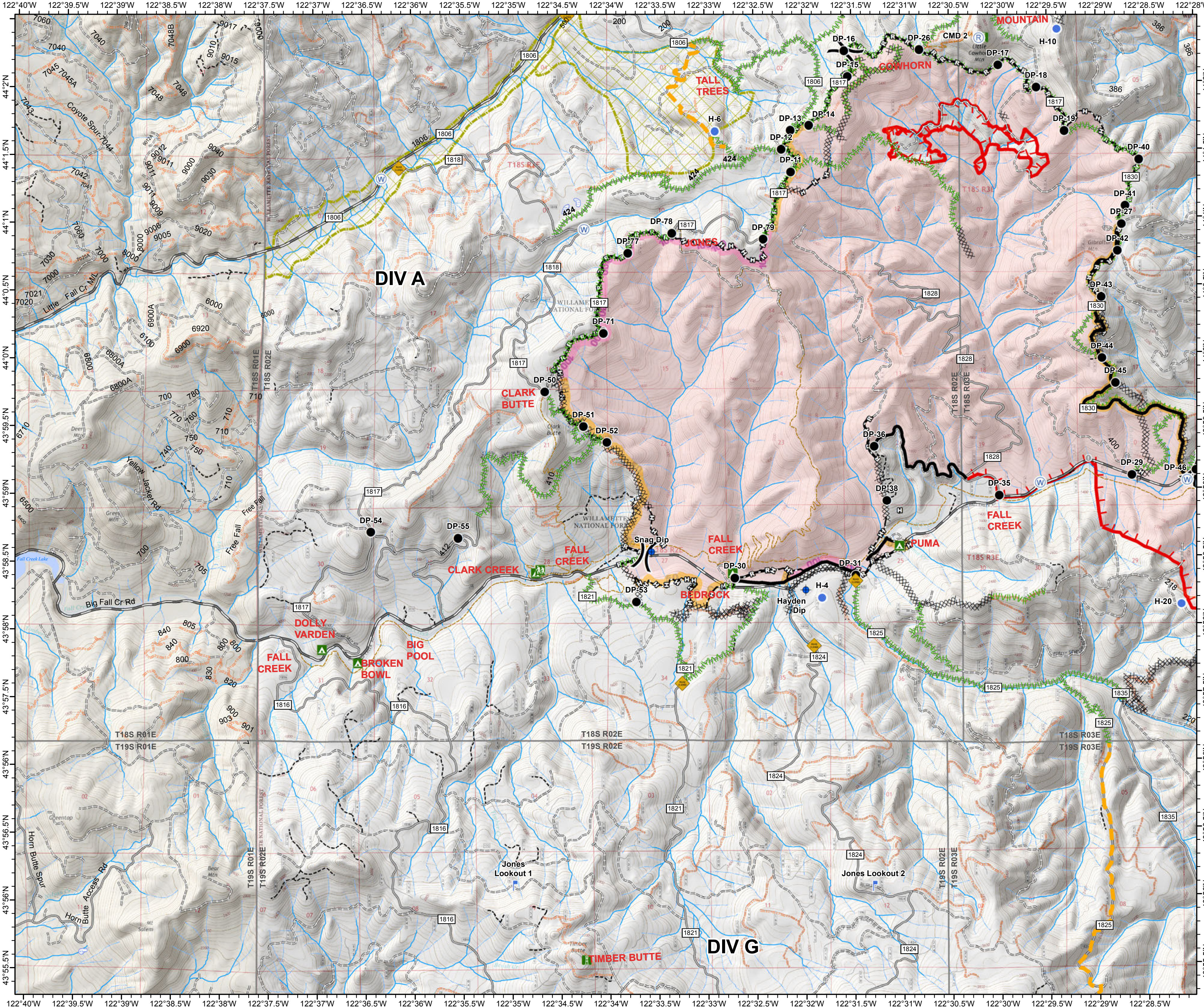
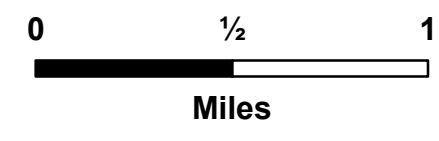


JONES FIRE OR-WIF-170191 IAP

Datum: North American 1983
09/21/2017
Day Shift
Perimeter as of: 09/17/17 @ 2329
Approx: 10,017 ac



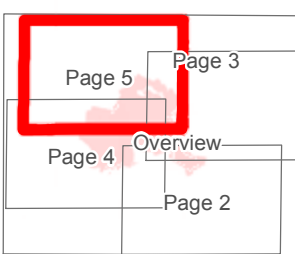
- Dip Site
- Drop Point
- Helispot
- Lookout
- Repeater
- Road Closure (Fire Traffic Only)
- Water Source
- Hazard Tree
- Late Successional Reserve
- Uncontrolled Fire Edge
- Completed Line
- Completed Dozer Line
- Completed Hand Line
- Road as Completed Line
- Brushed Road
- Planned Fire Line
- Mop-Up 25'-50'
- Mop-Up 100'



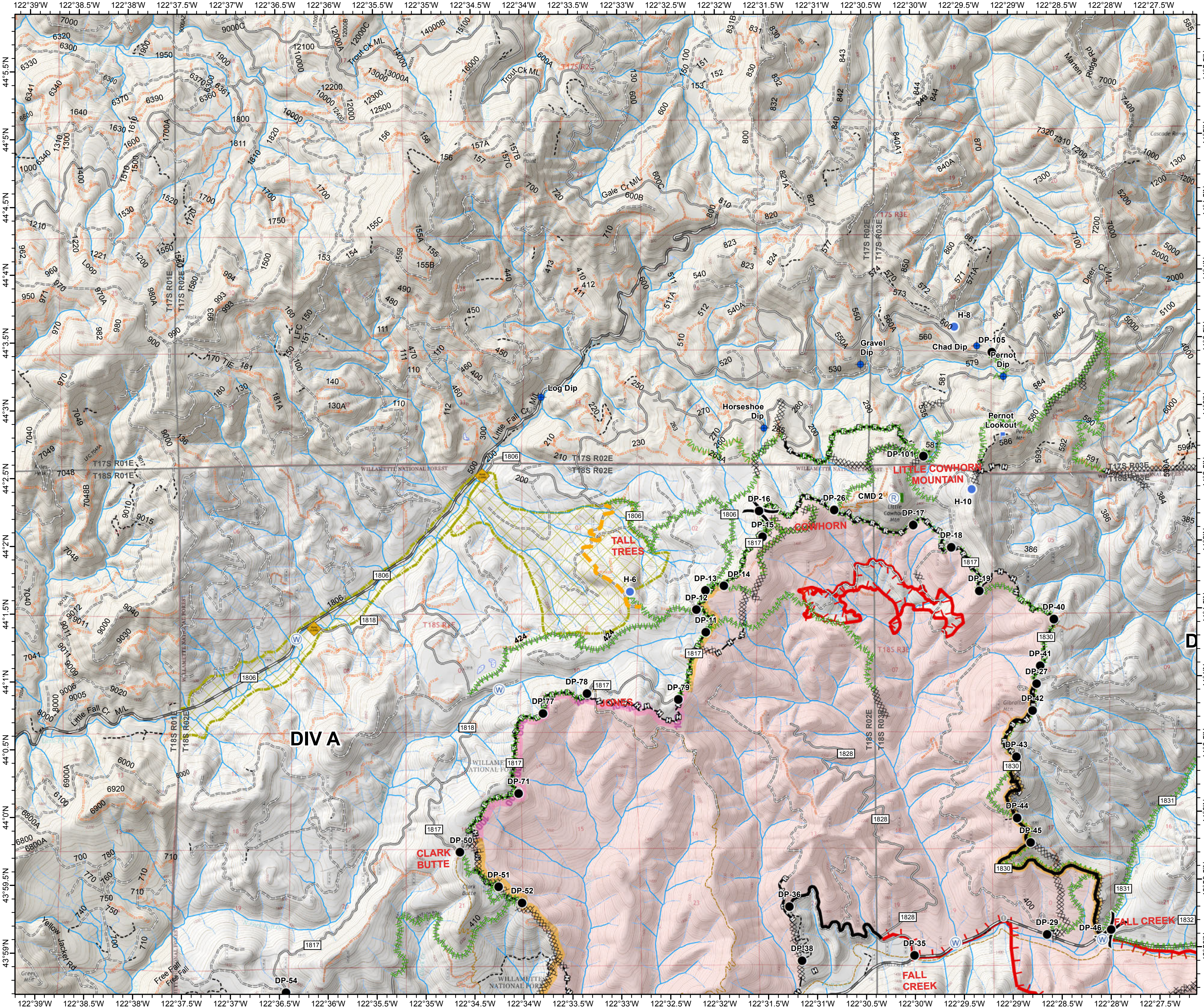
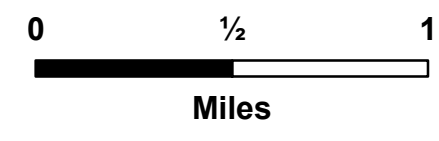
122°40'W 122°39.5'W 122°39'W 122°38.5'W 122°38'W 122°37.5'W 122°37'W 122°36.5'W 122°36'W 122°35.5'W 122°35'W 122°34.5'W 122°34'W 122°33.5'W 122°33'W 122°32.5'W 122°32'W 122°31.5'W 122°31'W 122°30.5'W 122°30'W 122°29.5'W 122°29'W 122°28.5'W 122°28'W

JONES FIRE OR-WIF-170191 IAP

Datum: North American 1983
 09/21/2017
 Day Shift
 Perimeter as of: 09/17/17 @ 2329
 Approx: 10,017 ac

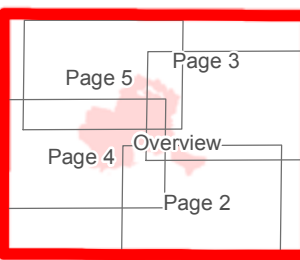


- Dip Site
- Drop Point
- Helispot
- Lookout
- Repeater
- Road Closure (Fire Traffic Only)
- Water Source
- Hazard Tree
- Late Successional Reserve
- Uncontrolled Fire Edge
- Completed Line
- Completed Dozer Line
- Completed Hand Line
- Road as Completed Line
- Brushed Road
- Planned Fire Line
- Mop-Up 25'-50'
- Mop-Up 100'



**JONES FIRE
OR-WIF-170191
IAP**

Datum: North American 1983
 09/21/2017
 Day Shift
 Perimeter as of: 09/17/17 @ 2329
 Approx: 10,017 ac



- Dip Site
- Drop Point
- Helispot
- Lookout
- Repeater
- Road Closure (Fire Traffic Only)
- Water Source
- Hazard Tree
- Late Successional Reserve
- Uncontrolled Fire Edge
- Completed Line
- Completed Dozer Line
- Completed Hand Line
- Road as Completed Line
- Brushed Road
- Planned Fire Line
- SlideFS1835
- Mop-Up 25'-50'
- Mop-Up 100'

