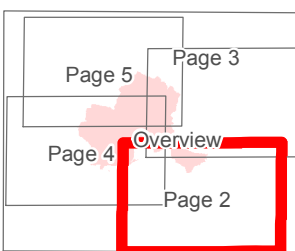
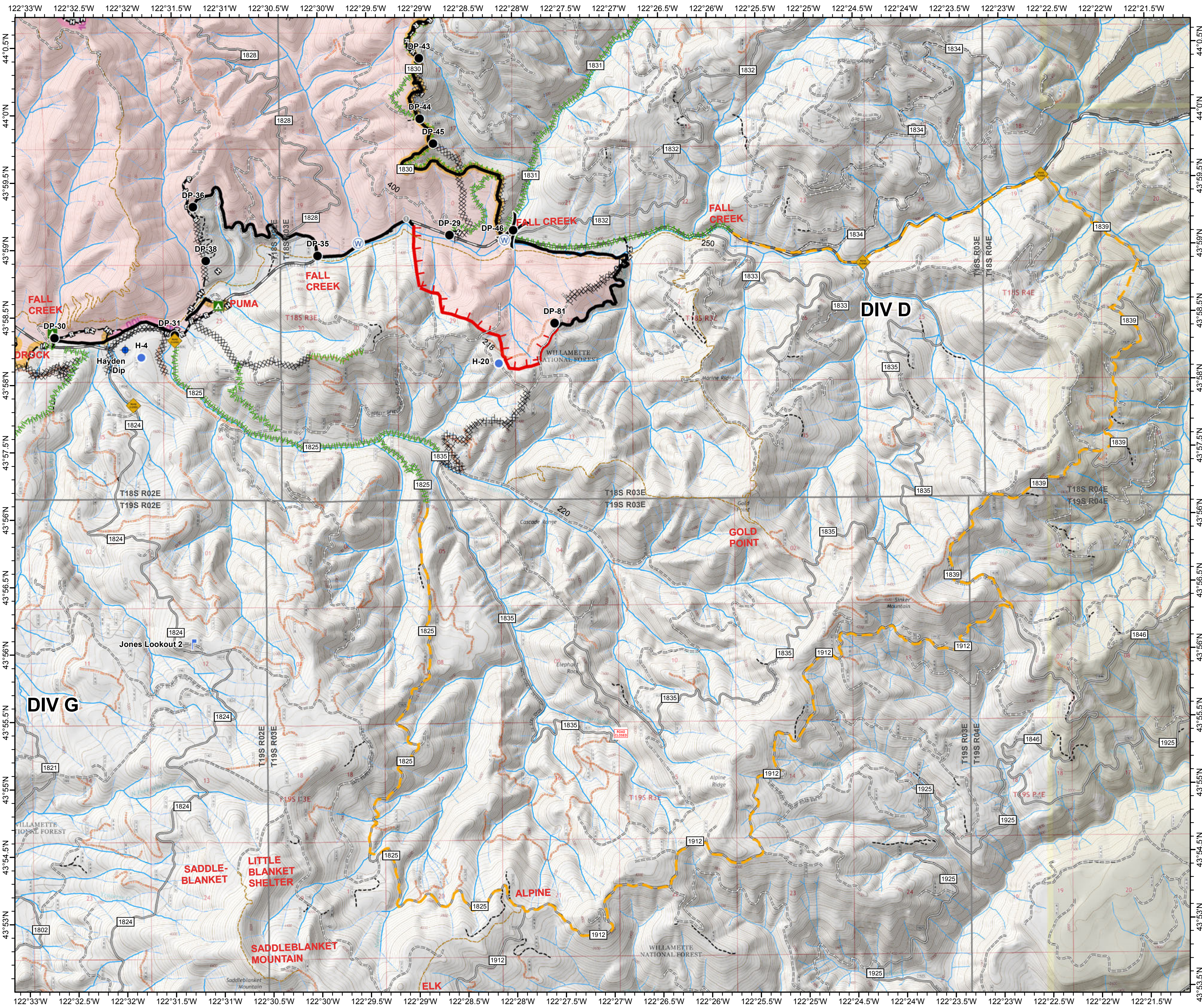
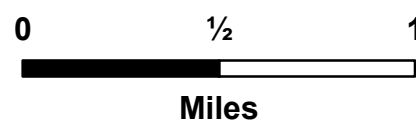


JONES FIRE OR-WIF-170191 IAP

Datum: North American 1983
09/27/2017
Day Shift
Perimeter as of: 09/23/17
Approx: 10,220 ac

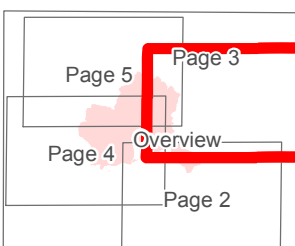


- Dip Site
- Drop Point
- Helispot
- Lookout
- Road Closure (Fire Traffic Only)
- Water Source
- Hazard Tree
- Uncontrolled Fire Edge
- Completed Line
- Completed Dozer Line
- Completed Hand Line
- Road as Completed Line
- Brushed Road
- SlideFS1835
- Mop-Up 25'-50'
- Mop-Up 100'

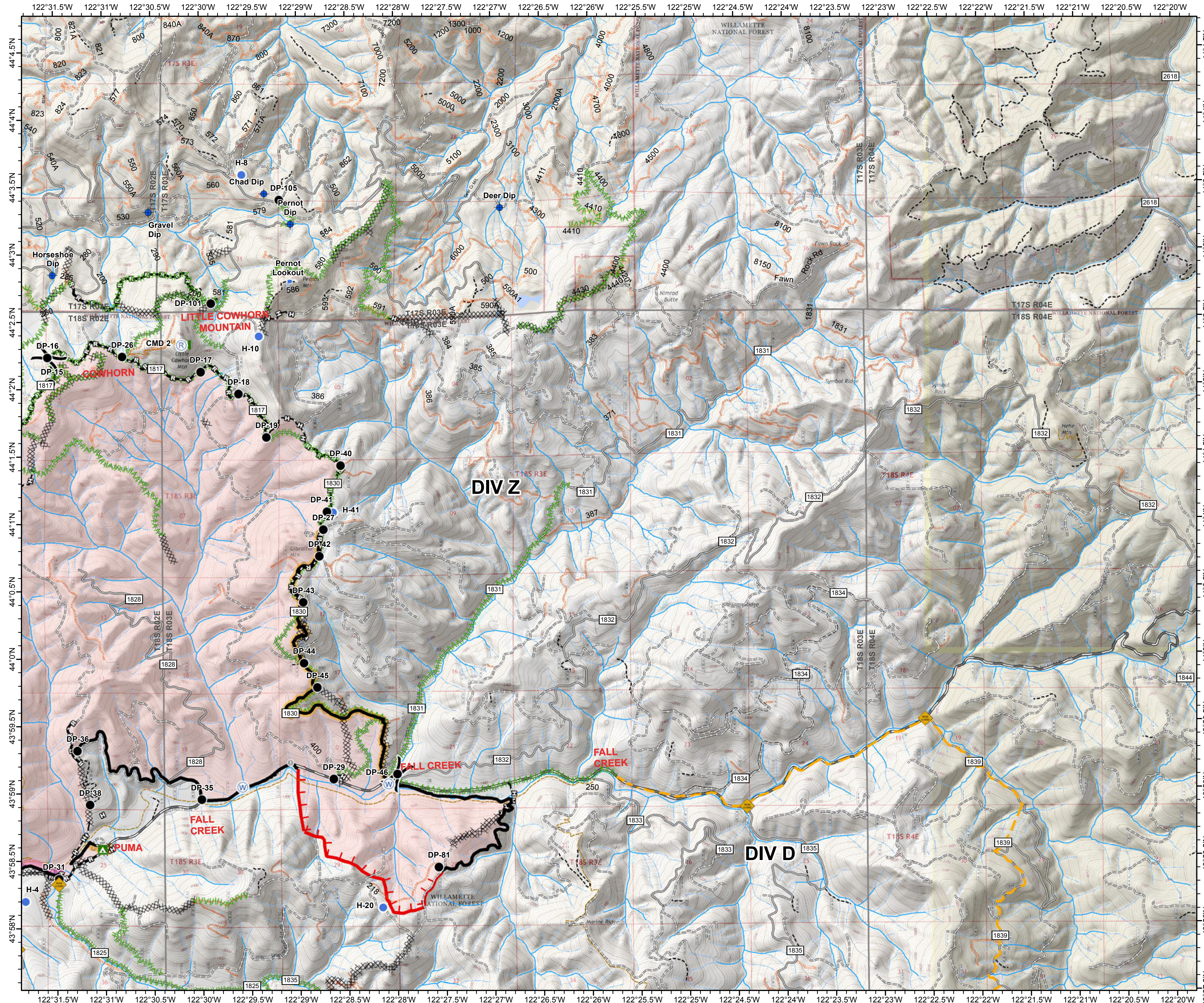
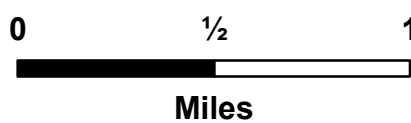


JONES FIRE OR-WIF-170191 IAP

Datum: North American 1983
09/27/2017
Day Shift
Perimeter as of: 09/23/17
Approx: 10,220 ac

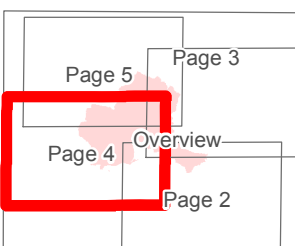


- Dip Site
- Drop Point
- Helispot
- Lookout
- Repeater
- Road Closure (Fire Traffic Only)
- Water Source
- Hazard Tree
- Uncontrolled Fire Edge
- Completed Line
- Completed Dozer Line
- Completed Hand Line
- Road as Completed Line
- Brushed Road
- Mop-Up 25'-50'
- Mop-Up 100'

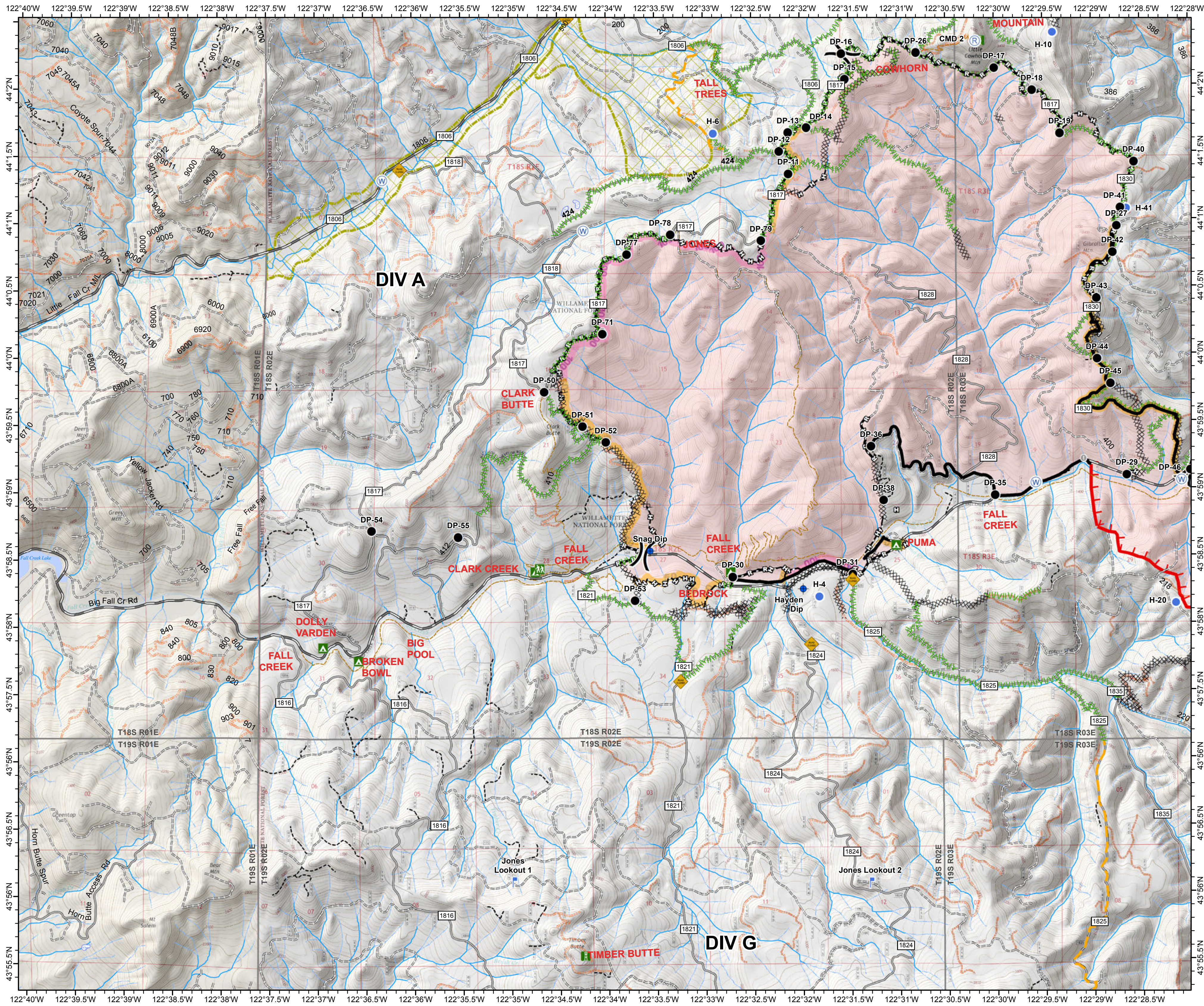
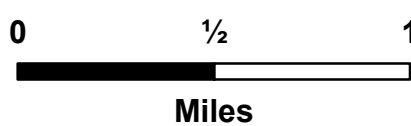


JONES FIRE OR-WIF-170191 IAP

Datum: North American 1983
09/27/2017
Day Shift
Perimeter as of: 09/23/17
Approx: 10,220 ac

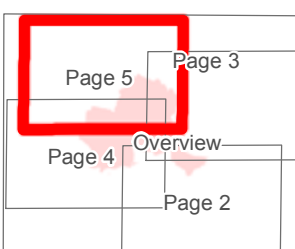


- Dip Site
- Drop Point
- Helispot
- Lookout
- Repeater
- Road Closure (Fire Traffic Only)
- Water Source
- Hazard Tree
- Late Successional Reserve
- Uncontrolled Fire Edge
- Completed Line
- Completed Dozer Line
- Completed Hand Line
- Road as Completed Line
- Brushed Road
- Mop-Up 25'-50'
- Mop-Up 100'

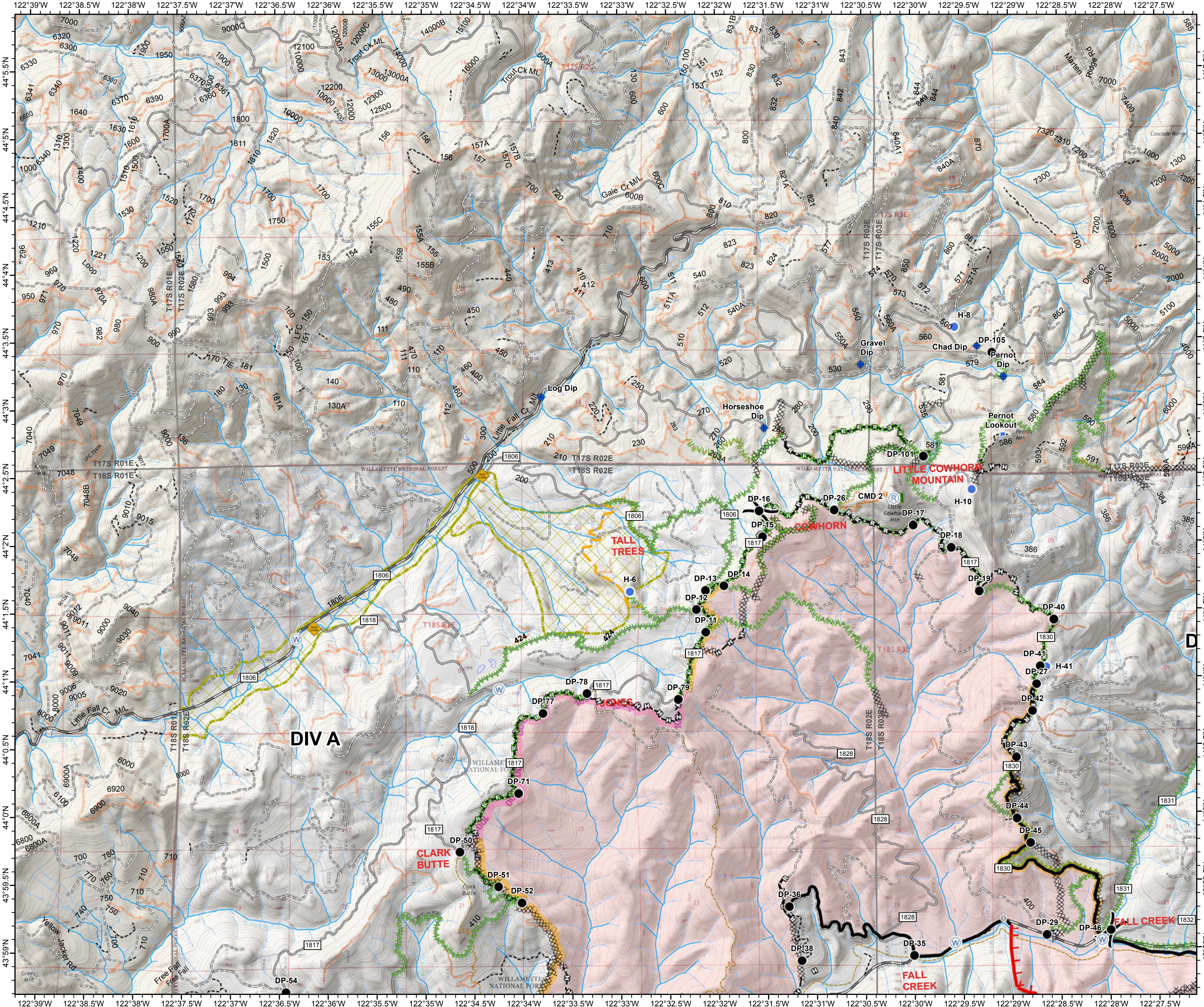
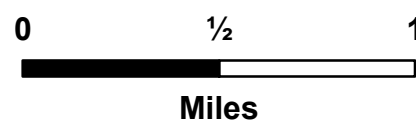


JONES FIRE OR-WIF-170191 IAP

Datum: North American 1983
09/27/2017
Day Shift
Perimeter as of: 09/23/17
Approx: 10,220 ac

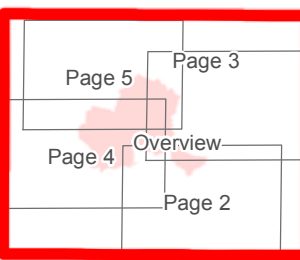


- Dip Site
- Drop Point
- Helispot
- Lookout
- Repeater
- Road Closure (Fire Traffic Only)
- Water Source
- Hazard Tree
- Late Successional Reserve
- Uncontrolled Fire Edge
- Completed Line
- Completed Dozer Line
- Completed Hand Line
- Road as Completed Line
- Brushed Road
- Mop-Up 25'-50'
- Mop-Up 100'



**JONES FIRE
OR-WIF-170191
IAP**

Datum: North American 1983
09/27/2017
Day Shift
Perimeter as of: 09/23/17
Approx: 10,220 ac



- Dip Site
- Drop Point
- Helispot
- Lookout
- Repeater
- Road Closure (Fire Traffic Only)
- Water Source
- Hazard Tree
- Late Successional Reserve
- Uncontrolled Fire Edge
- Completed Line
- Completed Dozer Line
- Completed Hand Line
- Road as Completed Line
- Brushed Road
- SlideFS1835
- Mop-Up 25'-50'
- Mop-Up 100'

