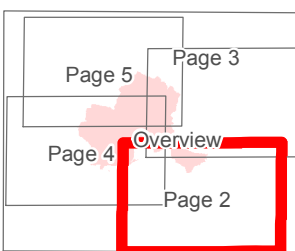
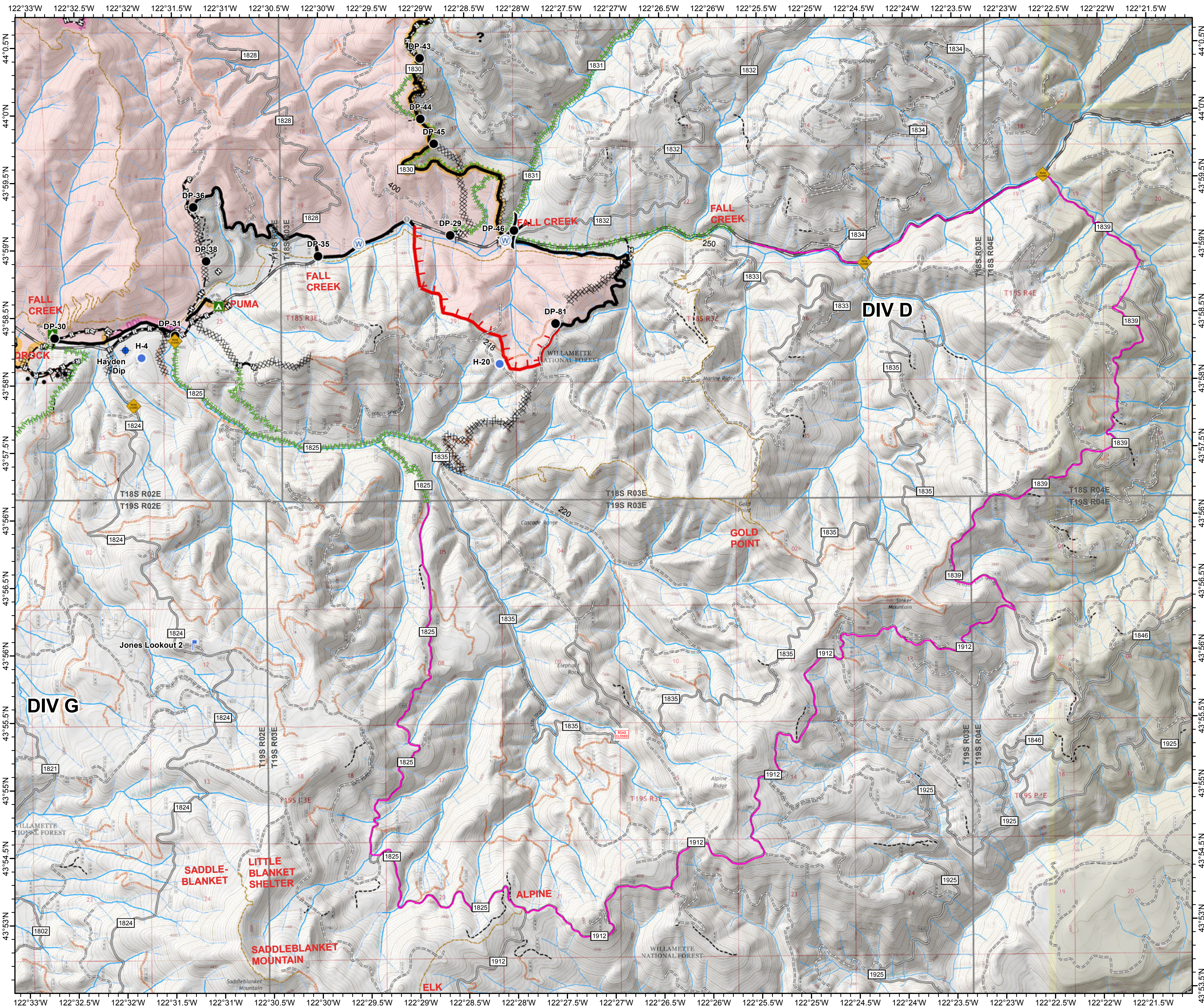
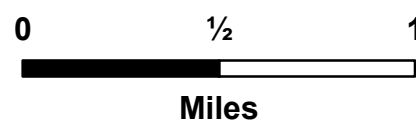


# JONES FIRE OR-WIF-170191 IAP

Datum: North American 1983  
09/29/2017  
Day Shift  
Perimeter as of: 09/27/17  
Approx: 10,114 ac

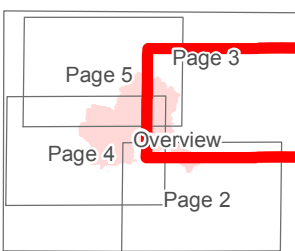


- Dip Site
- Drop Point
- Helispot
- Lookout
- Road Closure (Fire Traffic Only)
- Water Source
- Unknown
- Hazard Tree
- Uncontrolled Fire Edge
- Completed Line
- Completed Dozer Line
- Completed Hand Line
- Road as Completed Line
- Brushed Road
- Completed Burnout
- Unknown
- SlideFS1835
- Mop-Up 25'-50'
- Mop-Up 100'

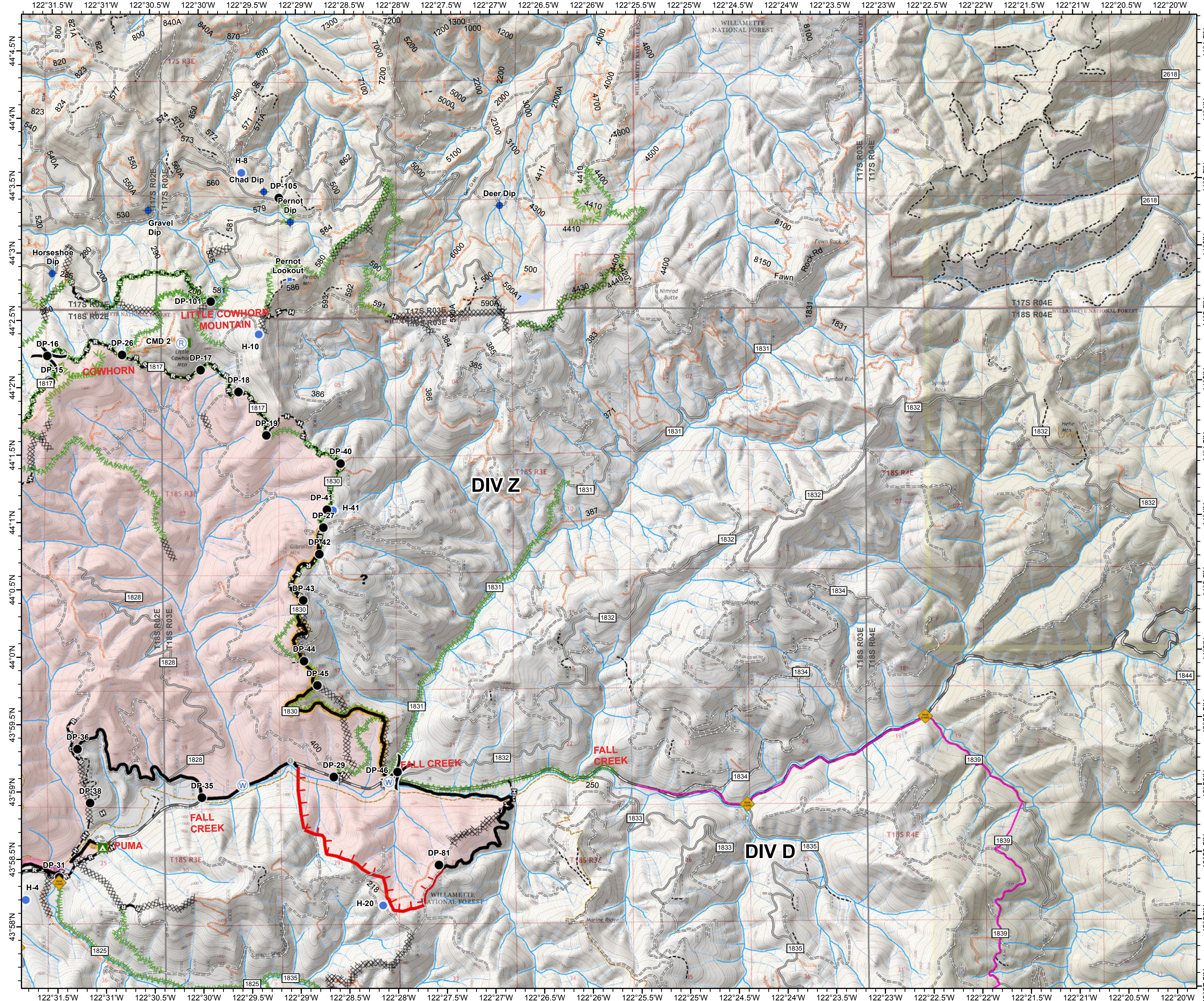
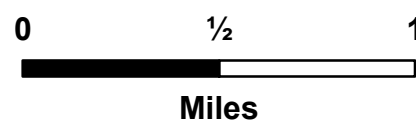


# JONES FIRE OR-WIF-170191 IAP

Datum: North American 1983  
09/29/2017  
Day Shift  
Perimeter as of: 09/27/17  
Approx: 10,114 ac

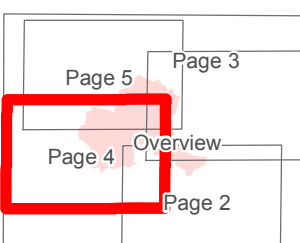


- Dip Site
- Drop Point
- Helispot
- Lookout
- Repeater
- Road Closure (Fire Traffic Only)
- Water Source
- Unknown
- Hazard Tree
- Uncontrolled Fire Edge
- Completed Line
- Completed Dozer Line
- Completed Hand Line
- Road as Completed Line
- Brushed Road
- Unknown
- Mop-Up 25'-50'
- Mop-Up 100'

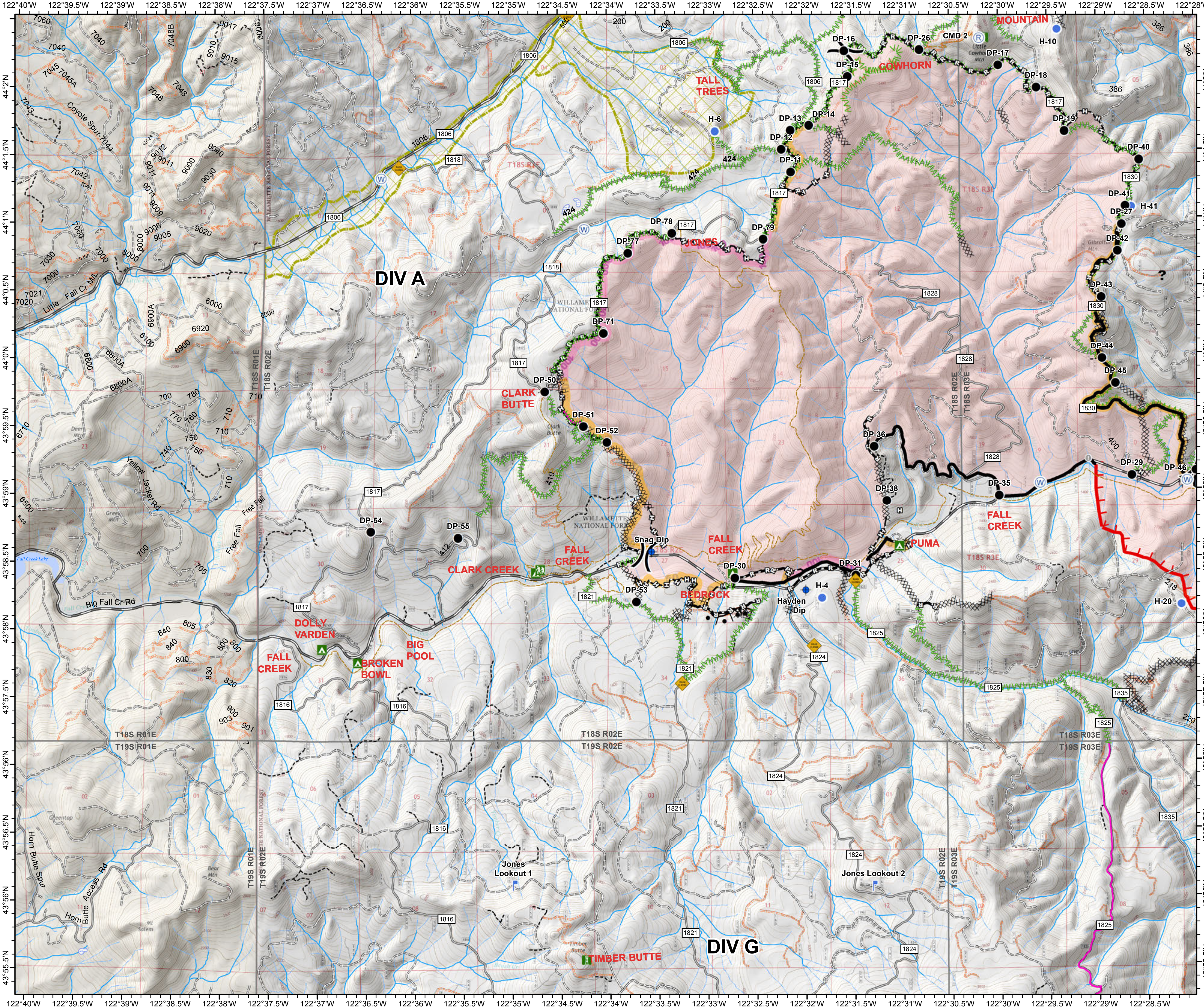
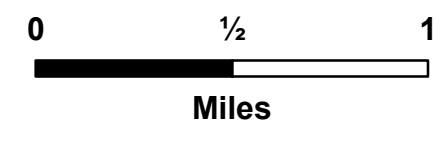


**JONES FIRE  
OR-WIF-170191  
IAP**

Date: North American 1983  
09/29/2017  
Day Shift  
Perimeter as of: 09/27/17  
Approx: 10,114 ac



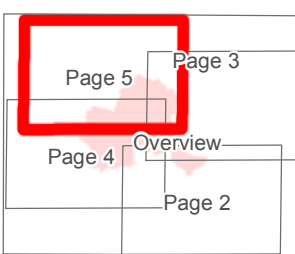
- Dip Site
- Drop Point
- Helispot
- Lookout
- Repeater
- Road Closure (Fire Traffic Only)
- Water Source
- Unknown
- Hazard Tree
- Late Successional Reserve
- Uncontrolled Fire Edge
- Completed Line
- Completed Dozer Line
- Completed Hand Line
- Road as Completed Line
- Brushed Road
- Completed Burnout
- Unknown
- Mop-Up 25'-50'
- Mop-Up 100'



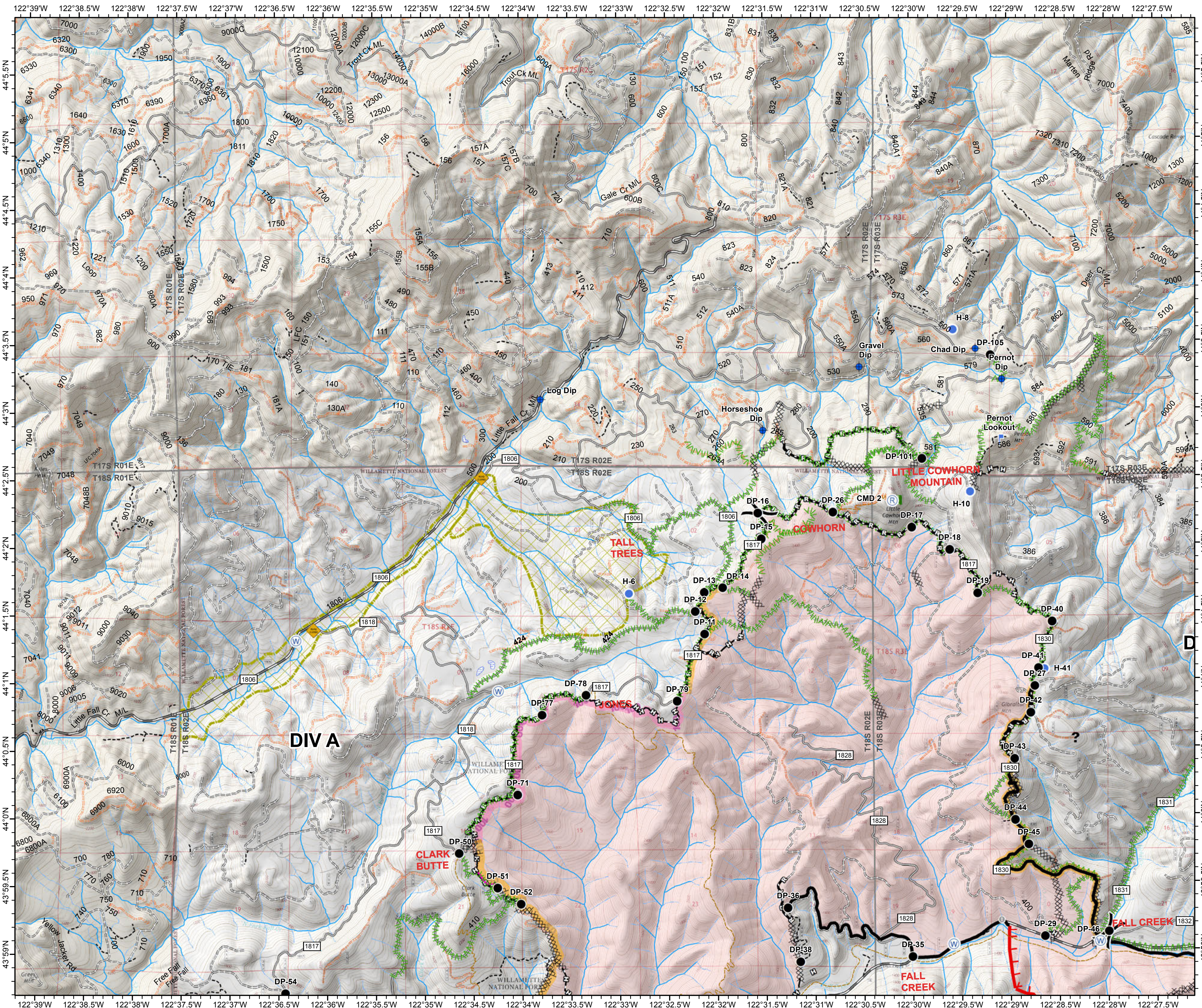
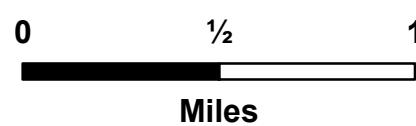
122°40'W 122°39.5'W 122°39'W 122°38.5'W 122°38'W 122°37.5'W 122°37'W 122°36.5'W 122°36'W 122°35.5'W 122°35'W 122°34.5'W 122°34'W 122°33.5'W 122°33'W 122°32.5'W 122°32'W 122°31.5'W 122°31'W 122°30.5'W 122°30'W 122°29.5'W 122°29'W 122°28.5'W 122°28'W

# JONES FIRE OR-WIF-170191 IAP

Datum: North American 1983  
09/29/2017  
Day Shift  
Perimeter as of: 09/27/17  
Approx: 10,114 ac

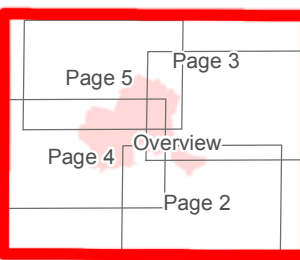


- Dip Site
- Drop Point
- Helispot
- Lookout
- Repeater
- Road Closure (Fire Traffic Only)
- Water Source
- Unknown
- Hazard Tree
- Late Successional Reserve
- Uncontrolled Fire Edge
- Completed Line
- Completed Dozer Line
- Completed Hand Line
- Road as Completed Line
- Brushed Road
- Unknown
- Mop-Up 25'-50'
- Mop-Up 100'



**JONES FIRE  
OR-WIF-170191  
IAP**

Datum: North American 1983  
09/29/2017  
Day Shift  
Perimeter as of: 09/27/17  
Approx: 10,114 ac



- Dip Site
- Drop Point
- Helispot
- └ Lookout
- Ⓡ Repeater
- ◆ Road Closure (Fire Traffic Only)
- Ⓜ Water Source
- ? Unknown
- Hazard Tree
- ▭ Late Successional Reserve
- └ Uncontrolled Fire Edge
- Completed Line
- ▨ Completed Dozer Line
- ▧ Completed Hand Line
- Road as Completed Line
- ▬▬▬ Brushed Road
- Completed Burnout
- Unknown
- ▭ SlideFS1835
- ▭ Mop-Up 25'-50'
- ▭ Mop-Up 100'

