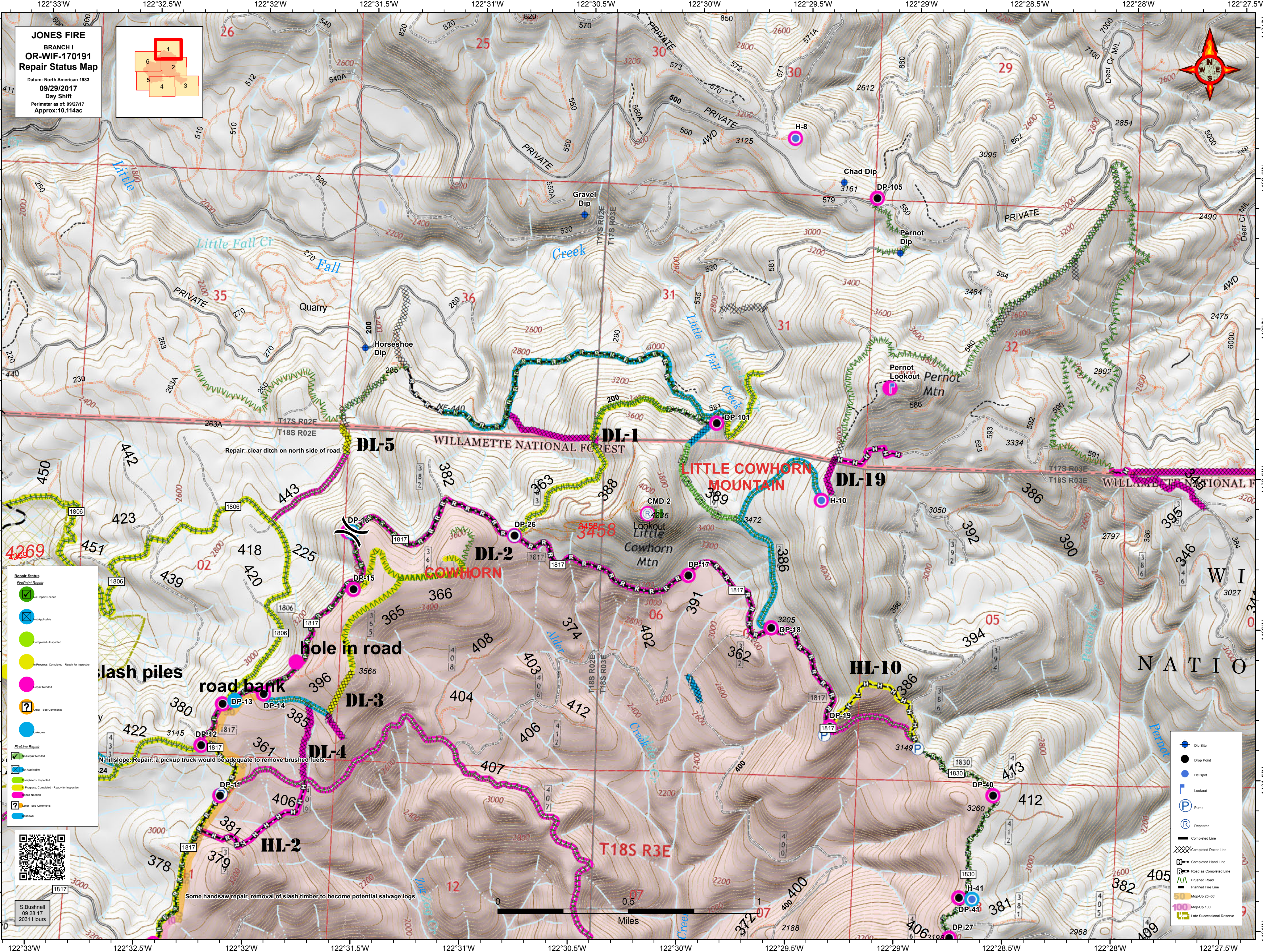
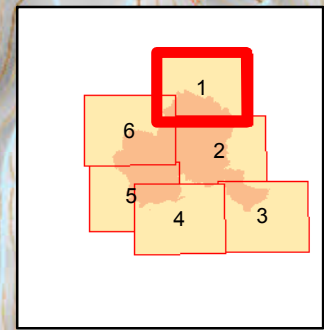


JONES FIRE
 BRANCH I
OR-WIF-170191
Repair Status Map
 Datum: North American 1983
 09/29/2017
 Day Shift
 Perimeter as of: 09/27/17
 Approx: 10,114ac



Repair Status

- No Repair Needed
- Not Applicable
- Progress, Completed - Ready for Inspection
- Repair Needed
- Other - See Comments
- Unknown

Fire Line Repair

- Repair Needed
- Not Applicable
- Completed - Inspected
- Progress, Completed - Ready for Inspection
- Repair Needed
- Other - See Comments
- Unknown

- Dip Site
- Drop Point
- Helispot
- Lookout
- Pump
- Repeater
- Completed Line
- Completed Dozer Line
- Completed Hand Line
- Road as Completed Line
- Brushed Road
- Planned Fire Line
- Mop-Up 25-50'
- Mop-Up 100'
- Late Successional Reserve



S. Bushnell
 09 28 17
 2031 Hours

Miles

Repair: clear ditch on north side of road.

hole in road

hillslope. Repair: a pickup truck would be adequate to remove brushed fuels.

Some handsaw repair, removal of slash timber to become potential salvage logs

WILLAMETTE NATIONAL FOREST

LITTLE COWHORN MOUNTAIN

WILLAMETTE NATIONAL FOREST

W I
 N A T I O

T18S R3E