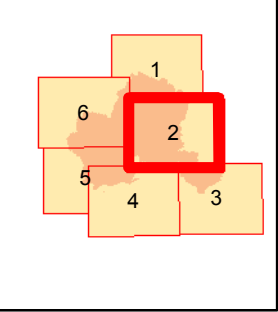
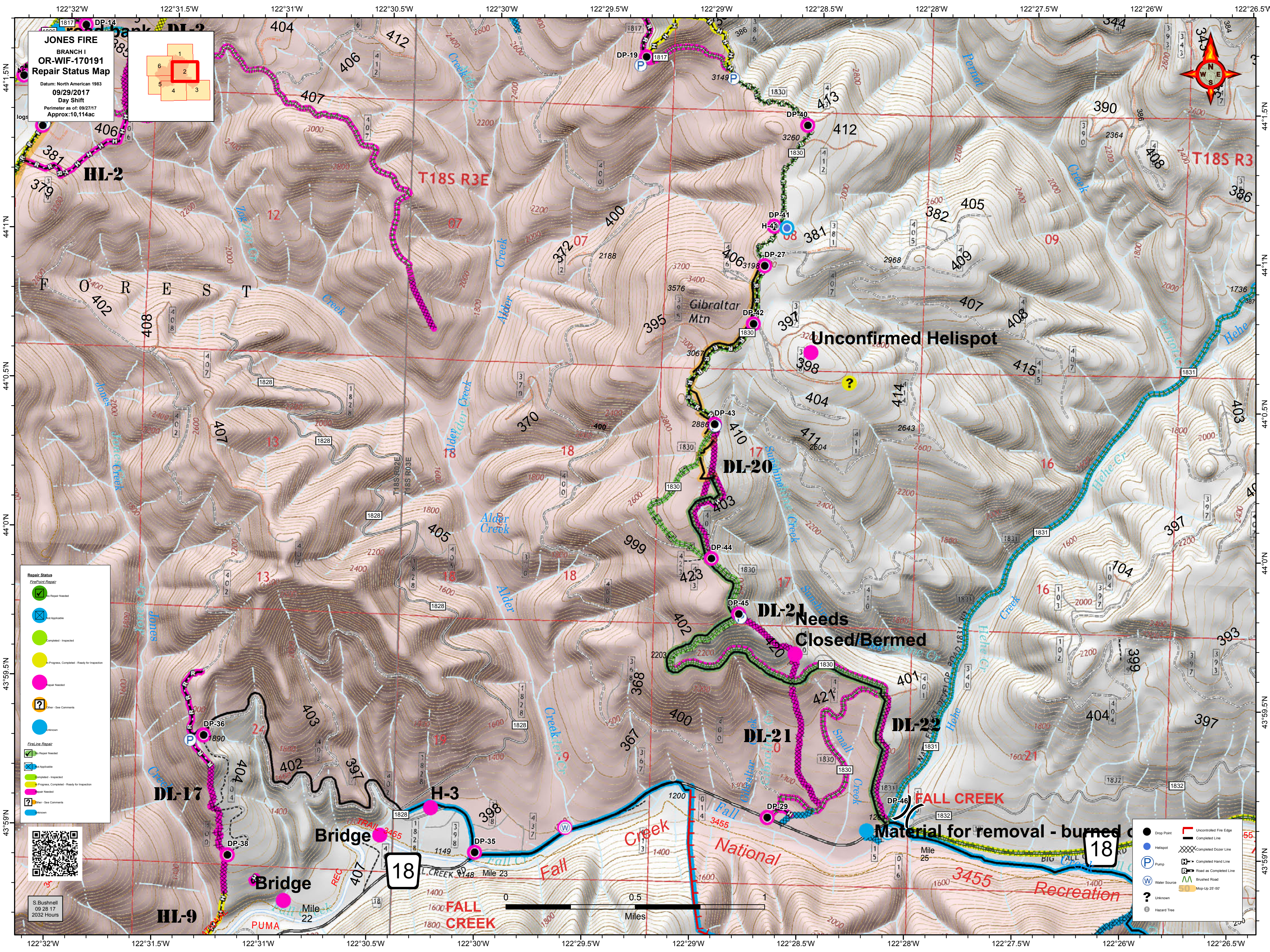
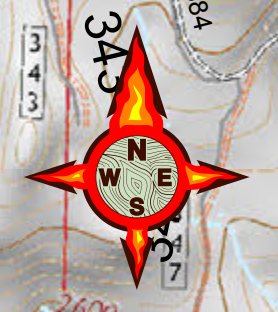


**JONES FIRE**  
 BRANCH I  
**OR-WIF-170191**  
**Repair Status Map**  
 Datum: North American 1983  
 09/29/2017  
 Day Shift  
 Perimeter as of: 09/27/17  
 Approx: 10,114ac

**Repair Status**

- FirePoint Repair
- ✓ No Repair Needed
- ✗ Not Applicable
- Completed - Inspected
- Progress, Completed - Ready for Inspection
- Repair Needed
- Other - See Comments
- Unknown

**FireLine Repair**

- ✓ Repair Needed
- ✗ Not Applicable
- Completed - Inspected
- Progress, Completed - Ready for Inspection
- Repair Needed
- Other - See Comments
- Unknown

- Drop Point
- Helispot
- P Pump
- W Water Source
- W Unknown
- Hazard Tree
- Uncontrolled Fire Edge
- Completed Line
- Completed Dozer Line
- Completed Hand Line
- Road as Completed Line
- Brushed Road
- Mop-Up 25'-50'



S. Bushnell  
 09 28 17  
 2032 Hours



18

Unconfirmed Helispot

DL-20

DL-21 Needs Closed/Bermed

DL-21

DL-22

FALL CREEK Material for removal - burned c

DL-17

Bridge

H-3

HL-9

HL-2

T18S R3

T18S R3E

F O R E S T

Gibraltar Mtn

FALL CREEK

FALL CREEK

Fall Creek National Recreation

Recreation

122°32'W 122°31.5'W 122°31'W 122°30.5'W 122°30'W 122°29.5'W 122°29'W 122°28.5'W 122°28'W 122°27.5'W 122°26.5'W

44°15'N 44°14'N 44°13'N 44°12'N 44°11'N 44°10'N 44°09'N 44°08'N 44°07'N 44°06'N 44°05'N 44°04'N 44°03'N 44°02'N 44°01'N 43°59'N 43°58'N 43°57'N 43°56'N 43°55'N 43°54'N 43°53'N 43°52'N 43°51'N 43°50'N

122°32'W 122°31.5'W 122°31'W 122°30.5'W 122°30'W 122°29.5'W 122°29'W 122°28.5'W 122°28'W 122°27.5'W 122°26.5'W

43°59'N 43°58'N 43°57'N 43°56'N 43°55'N 43°54'N 43°53'N 43°52'N 43°51'N 43°50'N