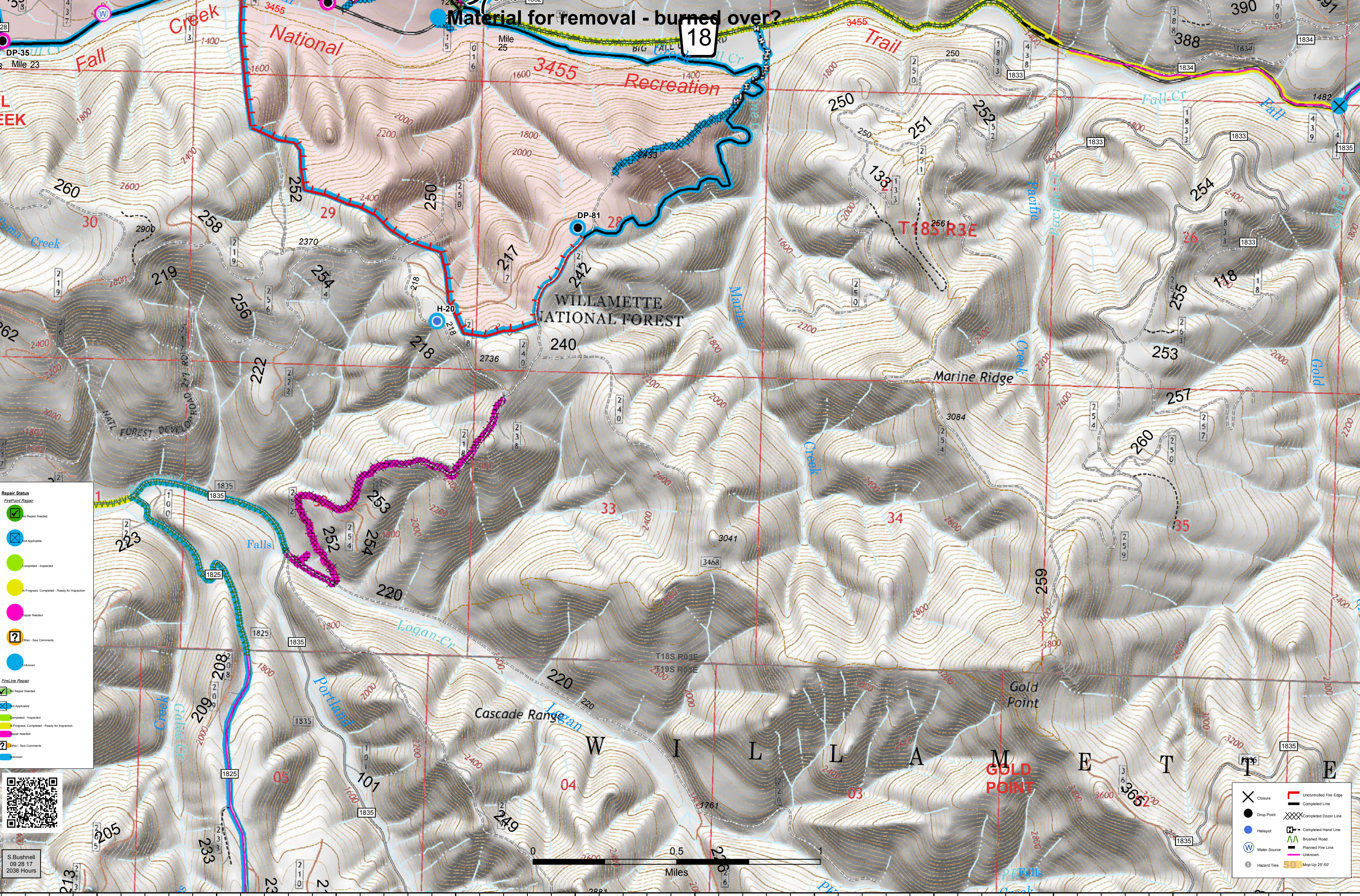
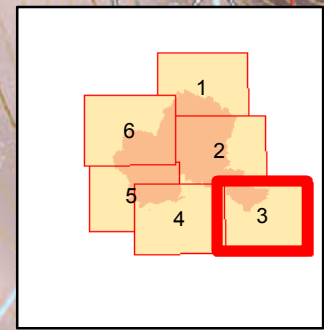


**JONES FIRE**  
 BRANCH I  
 OR-WIF-170191  
 Repair Status Map  
 Datum: North American 1983  
 09/29/2017  
 Day Shift  
 Perimeter as of: 09/27/17  
 Approx: 10,114ac



**Repair Status**

- FirePoint Repair
  - Green checkmark: No Repair Needed
  - Blue 'X' in circle: Not Applicable
  - Green circle: Completed - Inspected
  - Yellow circle: In Progress, Completed - Ready for Inspection
  - Pink circle: Repair Needed
  - Question mark in circle: Other - See Comments
  - Blue circle: Unknown
- FireLine Repair
  - Green checkmark: No Repair Needed
  - Blue 'X' in circle: Not Applicable
  - Green line: Completed - Inspected
  - Yellow line: In Progress, Completed - Ready for Inspection
  - Pink line: Repair Needed
  - Question mark in circle: Other - See Comments
  - Blue circle: Unknown



S. Bushnell  
 09 28 17  
 2036 Hours

- Black 'X': Closure
- Black circle: Drop Point
- Blue circle: Heliport
- Blue circle with 'W': Water Source
- Red line: Uncontrolled Fire Edge
- Black line: Completed Line
- Black 'X' in square: Completed Dozer Line
- Green line: Completed Hand Line
- Green line with 'X': Brushed Road
- Black line with 'X': Planned Fire Line
- Pink line: Unknown
- Yellow circle: Mop-Up 25'-50'

