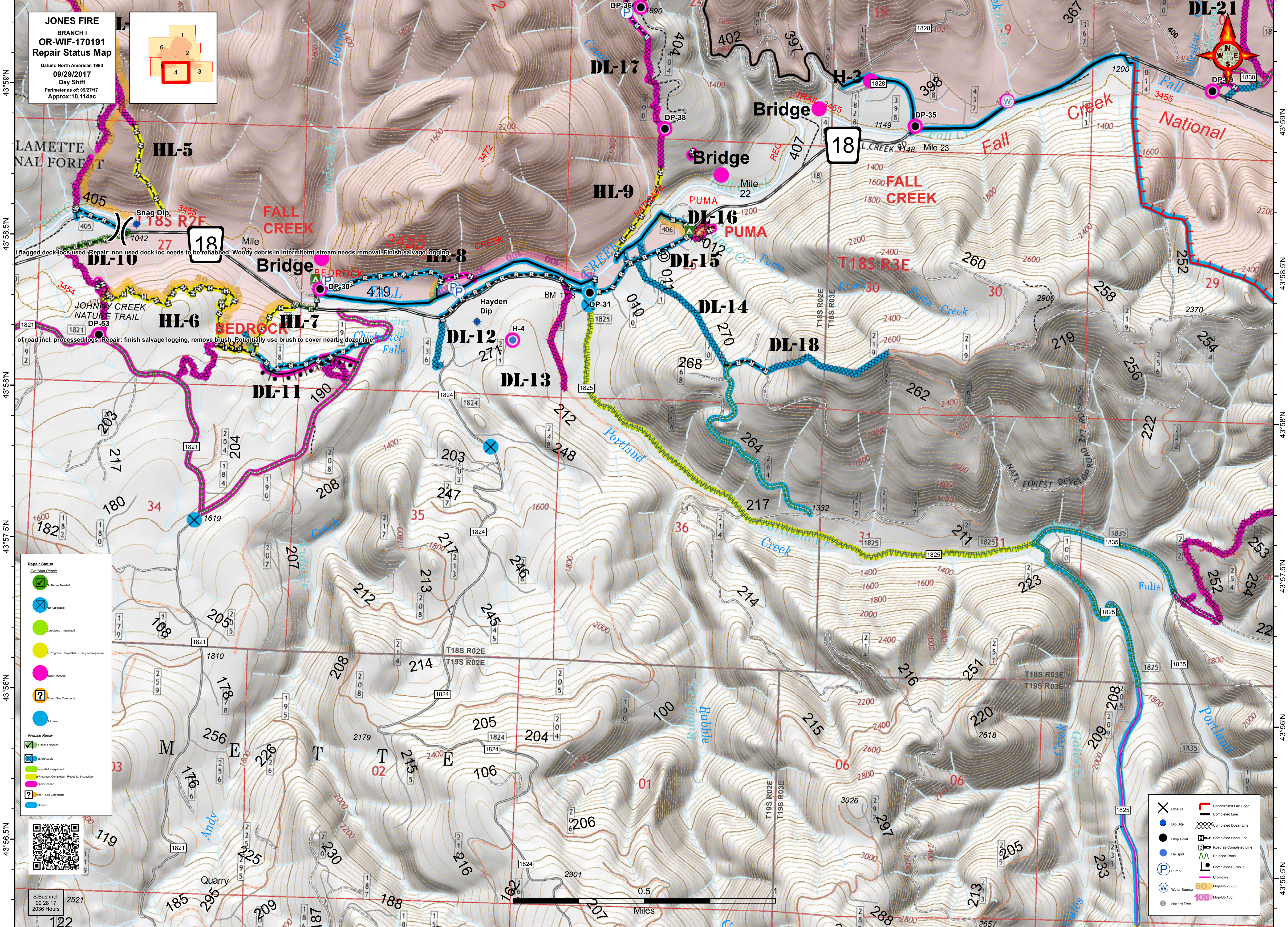
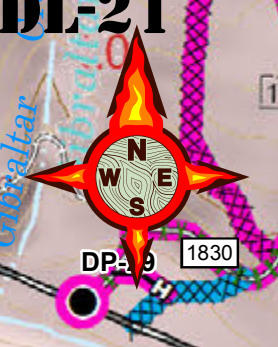
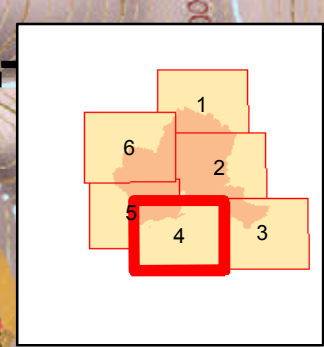


122°34'W 122°33.5'W 122°33'W 122°32.5'W 122°32'W 122°31.5'W 122°31'W 122°30.5'W 122°30'W 122°29.5'W 122°29'W 122°28.5'W

JONES FIRE
BRANCH I
OR-WIF-170191
Repair Status Map
Datum: North American 1983
09/29/2017
Day Shift
Perimeter as of: 09/27/17
Approx: 10,114ac



flagged deck locs used. Repair: non used deck loc needs to be rehabbed. Woody debris in intermittent stream needs removal. Finish salvage logging.

of road incl. processed logs. Repair: finish salvage logging, remove brush. Potentially use brush to cover nearby dozer line.

Repair Status

- Green checkmark: No Repair Needed
- Blue 'X': Not Applicable
- Green circle: Completed - Inspected
- Yellow circle: Progress, Completed - Ready for Inspection
- Pink circle: Repair Needed
- Question mark: Other - See Comments
- Blue circle: Unknown

Fire Line Repair

- Green checkmark: Repair Needed
- Blue 'X': Not Applicable
- Green circle: Completed - Inspected
- Yellow circle: Progress, Completed - Ready for Inspection
- Pink circle: Repair Needed
- Question mark: Other - See Comments
- Blue circle: Unknown

- Red 'X': Closure
- Blue circle: Dip Site
- Black circle: Drop Point
- Blue circle: Helispot
- Blue circle with 'P': Pump
- Blue circle with 'W': Water Source
- Black circle: Hazard Tree
- Red line: Uncontrolled Fire Edge
- Black line: Completed Line
- Black line with 'X': Completed Dozer Line
- Black line with 'X': Completed Hand Line
- Black line with 'X': Road as Completed Line
- Black line with 'X': Brushed Road
- Black line with 'X': Completed Burnout
- Black line: Unknown
- Yellow line: Mop-Up 25'-50'
- Red line: Mop-Up 100'



S. Bushnell
09 28 17
2036 Hours
2527

122°34'W 122°33.5'W 122°33'W 122°32.5'W 122°32'W 122°31.5'W 122°31'W 122°30.5'W 122°30'W 122°29.5'W 122°29'W 122°28.5'W