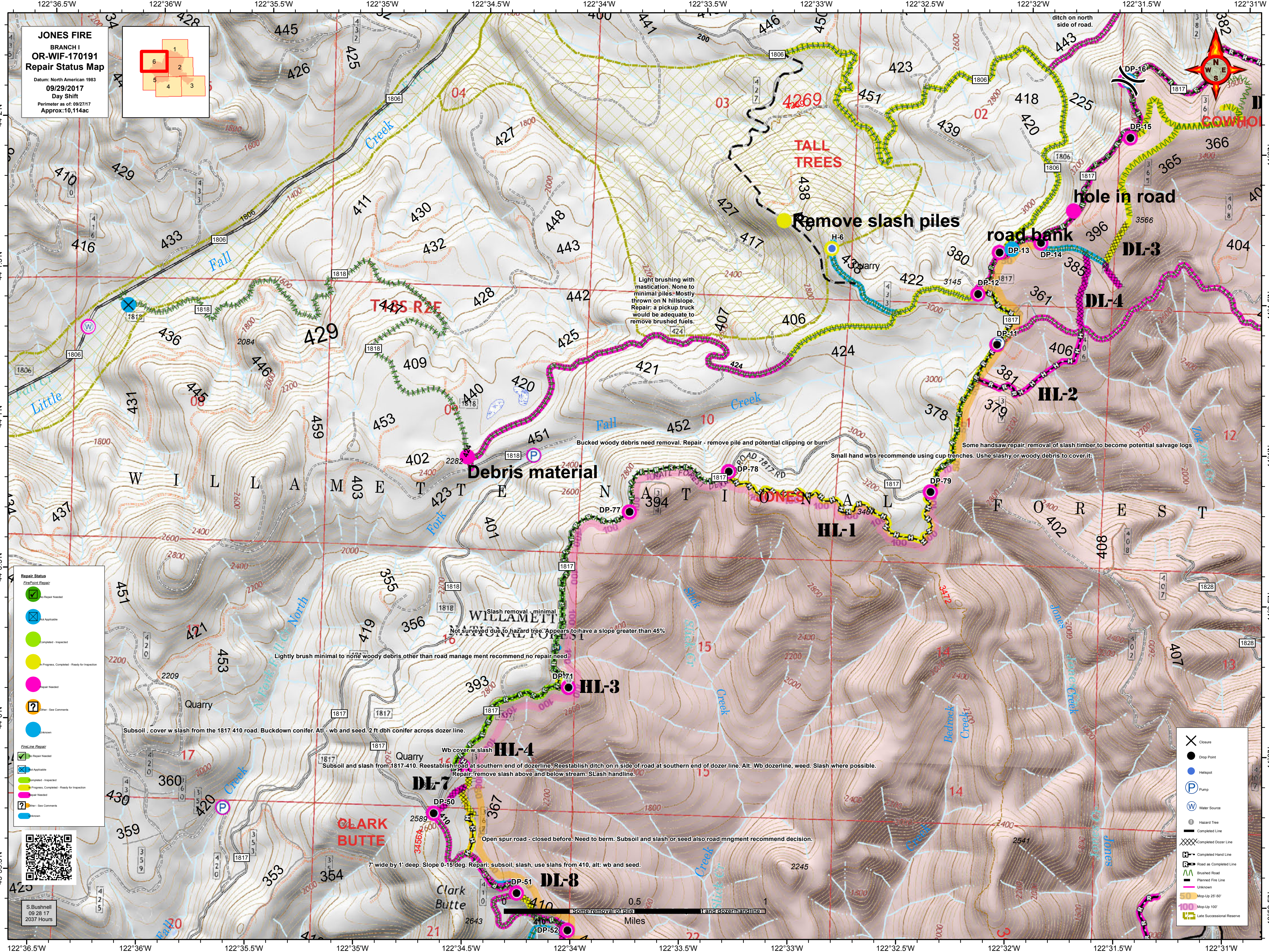
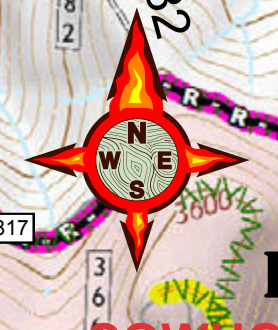
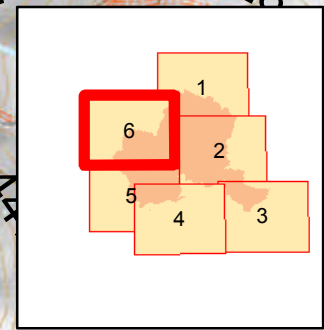


JONES FIRE
 BRANCH I
 OR-WIF-170191
 Repair Status Map
 Datum: North American 1983
 09/29/2017
 Day Shift
 Perimeter as of: 09/27/17
 Approx: 10,114ac

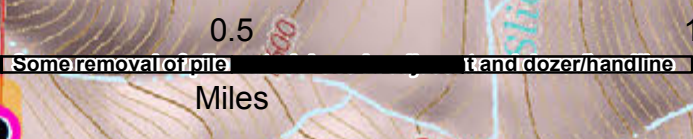


- Repair Status**
- Green checkmark: No Repair Needed
 - Blue 'X': Not Applicable
 - Green circle: Completed - Inspected
 - Yellow circle: Progress, Completed - Ready for Inspection
 - Pink circle: Repair Needed
 - Blue question mark: Other - See Comments
 - Blue circle: Unknown
- FireLine Repair**
- Green checkmark: No Repair Needed
 - Blue 'X': Not Applicable
 - Green circle: Completed - Inspected
 - Yellow circle: Progress, Completed - Ready for Inspection
 - Pink circle: Repair Needed
 - Blue question mark: Other - See Comments
 - Blue circle: Unknown

- Black 'X': Closure
- Black circle: Drop Point
- Blue circle: Hillspot
- Blue circle with 'P': Pump
- Blue circle with 'W': Water Source
- Black circle with 'H': Hazard Tree
- Black line: Completed Line
- Black line with 'X': Completed Dozer Line
- Black line with 'H': Completed Hand Line
- Black line with 'R': Road as Completed Line
- Black line with 'B': Brushed Road
- Black line with 'F': Planned Fire Line
- Black line with 'M': Mop-Up 25'-60'
- Black line with '100': Mop-Up 100'
- Black line with 'L': Late Successional Reserve



S. Bushnell
 09 28 17
 2037 Hours



Light brushing with mastication. None to minimal piles - Mostly thrown on N hillslope. Repair: a pickup truck would be adequate to remove brushed fuels.

Bucked woody debris need removal. Repair - remove pile and potential clipping or burn

Some handsaw repair, removal of slash timber to become potential salvage logs

Slash removal - minimal
 Not surveyed due to hazard tree. Appears to have a slope greater than 45%

Lightly brush minimal to none woody debris other than road management recommend no repair need

Subsoil, cover w slash from the 1817 410 road. Buckdown conifer. Alt - wb and seed. 2 ft dbh conifer across dozer line.

Subsoil and slash from 1817-410. Reestablish road at southern end of dozerline. Reestablish ditch on n side of road at southern end of dozer line. Alt: Wb dozerline, weed. Slash where possible. Repair: remove slash above and below stream. SLASH handline.

Open spur road - closed before. Need to berm. Subsoil and slash or seed also road mgmt recommend decision.

7' wide by 1' deep. Slope 0-15 deg. Repair: subsoil, slash, use slash from 410, alt: wb and seed.