

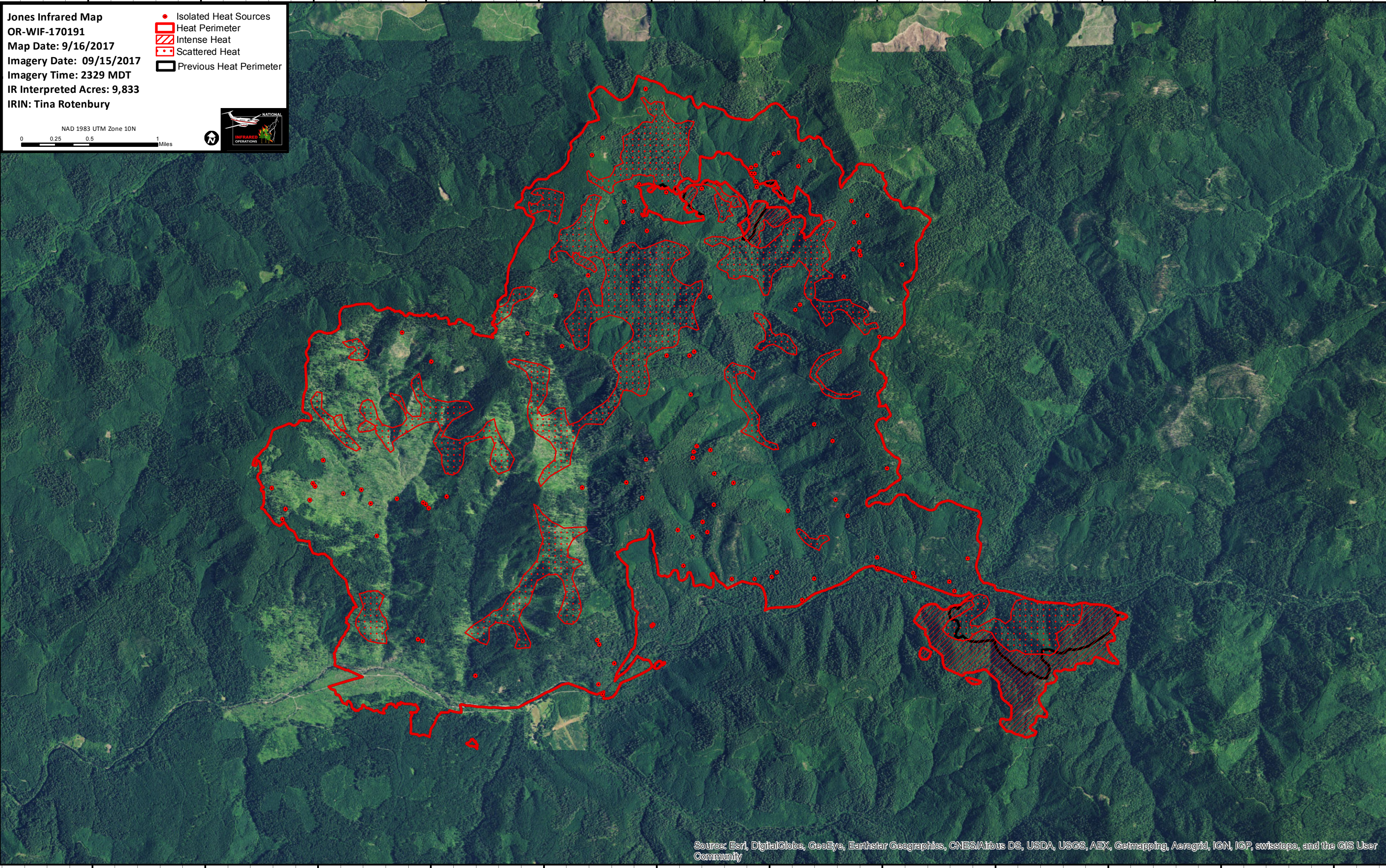

122°36'W 122°35'W 122°34'W 122°33'W 122°32'W 122°31'W 122°30'W 122°29'W 122°28'W 122°27'W 122°26'W 122°25'W

Jones Infrared Map
OR-WIF-170191
Map Date: 9/16/2017
Imagery Date: 09/15/2017
Imagery Time: 2329 MDT
IR Interpreted Acres: 9,833
IRIN: Tina Rotenbury

- Isolated Heat Sources
- ▭ Heat Perimeter
- ▨ Intense Heat
- ▩ Scattered Heat
- ▭ Previous Heat Perimeter

NAD 1983 UTM Zone 10N

0 0.25 0.5 1 Miles



122°36'W 122°35'W 122°34'W 122°33'W 122°32'W 122°31'W 122°30'W 122°29'W 122°28'W 122°27'W 122°26'W 122°25'W

Source: Esri, DigitalGlobe, GeoEye, Earthstar Geographics, CNES/Airbus DS, USDA, USGS, AEX, Getmapping, Aerogrid, IGN, IGP, swisstopo, and the GIS User Community

44°2'N
44°1'N
44°0'N
43°59'N
43°58'N

44°2'N
44°1'N
44°0'N
43°59'N
43°58'N