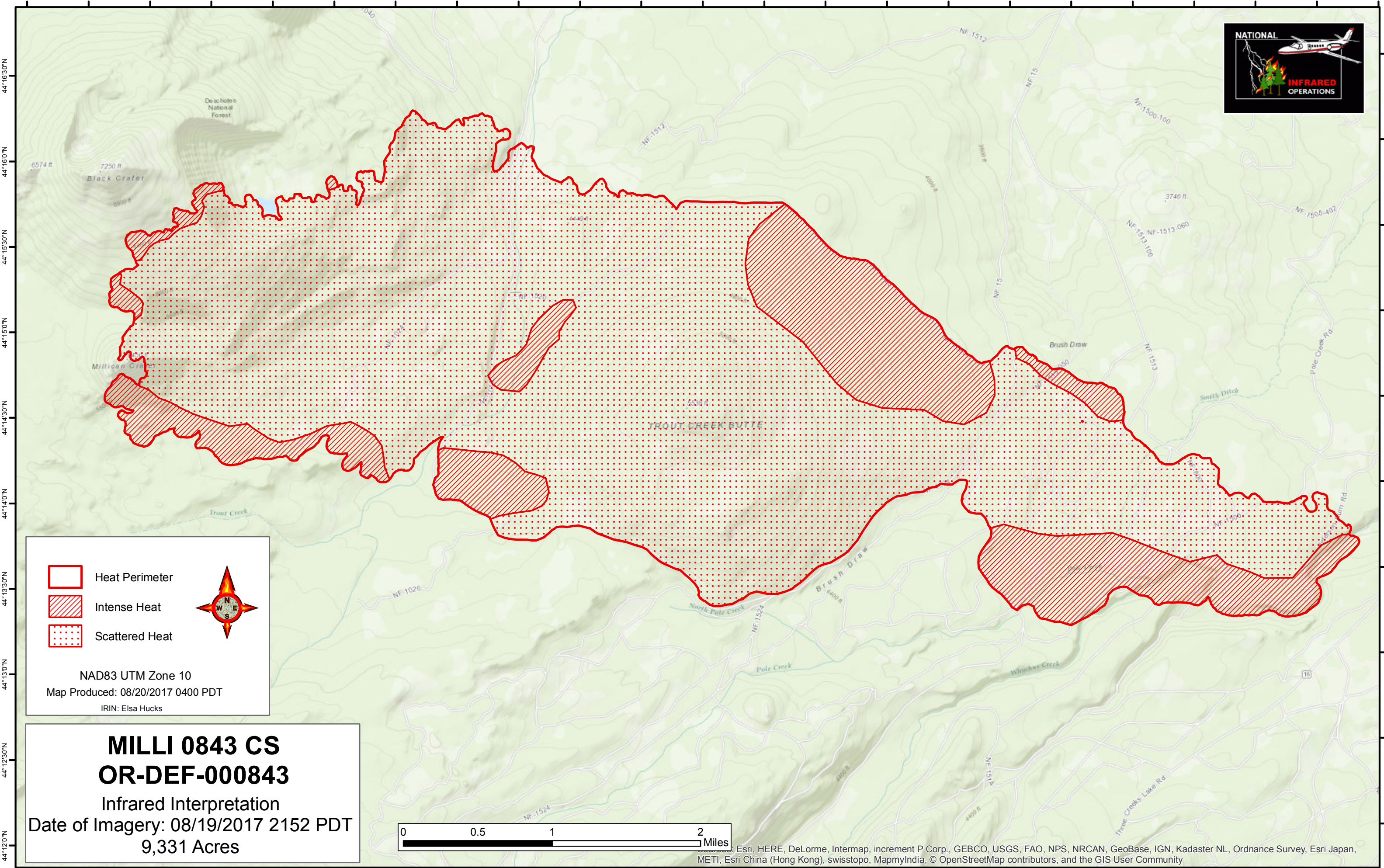






121°45'30"W 121°45'0"W 121°44'30"W 121°44'0"W 121°43'30"W 121°43'0"W 121°42'30"W 121°42'0"W 121°41'30"W 121°41'0"W 121°40'30"W 121°40'0"W 121°39'30"W 121°39'0"W 121°38'30"W 121°38'0"W 121°37'30"W 121°37'0"W 121°36'30"W 121°36'0"W 121°35'30"W 121°35'0"W 121°34'30"W



44°16'30"N  
44°16'0"N  
44°15'30"N  
44°15'0"N  
44°14'30"N  
44°14'0"N  
44°13'30"N  
44°13'0"N  
44°12'30"N  
44°12'0"N

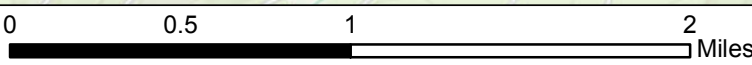
44°16'30"N  
44°16'0"N  
44°15'30"N  
44°15'0"N  
44°14'30"N  
44°14'0"N  
44°13'30"N  
44°13'0"N  
44°12'30"N  
44°12'0"N

 Heat Perimeter  
 Intense Heat  
 Scattered Heat



NAD83 UTM Zone 10  
 Map Produced: 08/20/2017 0400 PDT  
 IRIN: Elsa Hucks

**MILLI 0843 CS**  
**OR-DEF-000843**  
 Infrared Interpretation  
 Date of Imagery: 08/19/2017 2152 PDT  
 9,331 Acres



121°45'30"W 121°45'0"W 121°44'30"W 121°44'0"W 121°43'30"W 121°43'0"W 121°42'30"W 121°42'0"W 121°41'30"W 121°41'0"W 121°40'30"W 121°40'0"W 121°39'30"W 121°39'0"W 121°38'30"W 121°38'0"W 121°37'30"W 121°37'0"W 121°36'30"W 121°36'0"W 121°35'30"W 121°35'0"W

© 2017 Esri, HERE, DeLorme, Intermap, increment P Corp., GEBCO, USGS, FAO, NPS, NRCAN, GeoBase, IGN, Kadaster NL, Ordnance Survey, Esri Japan, METI, Esri China (Hong Kong), swisstopo, MapmyIndia, © OpenStreetMap contributors, and the GIS User Community