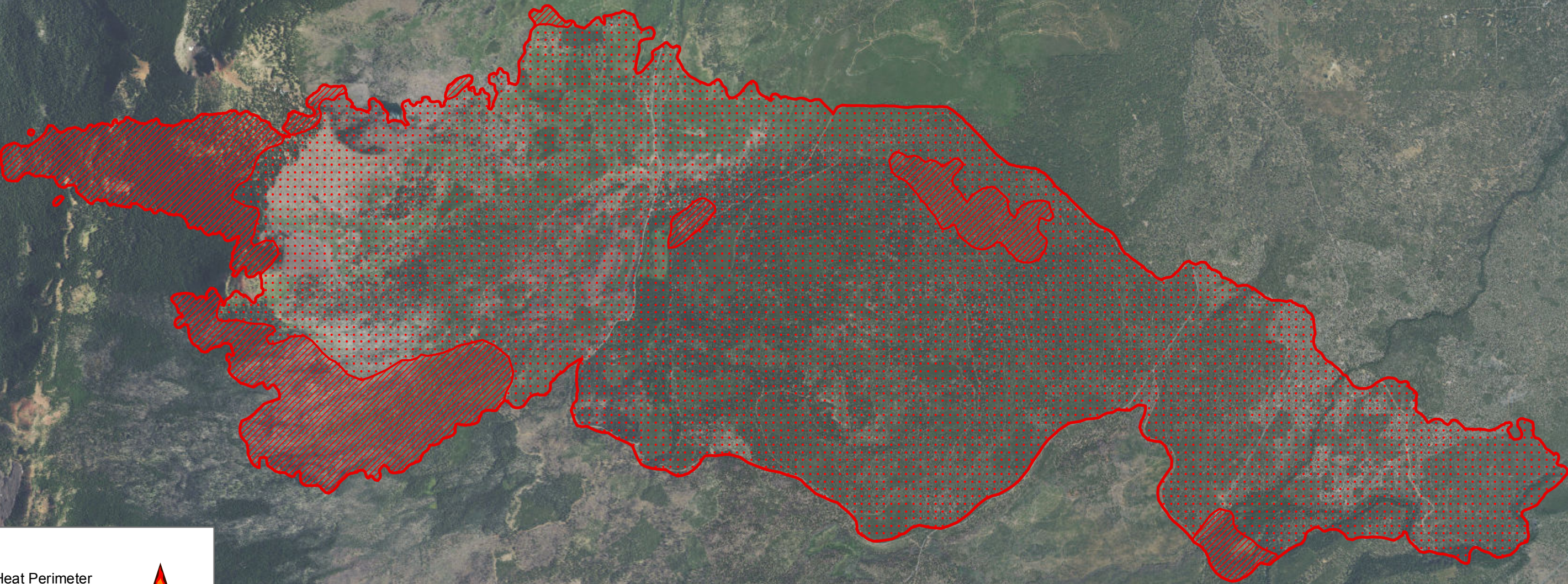





121°47'0"W 121°46'30"W 121°46'0"W 121°45'30"W 121°45'0"W 121°44'30"W 121°44'0"W 121°43'30"W 121°43'0"W 121°42'30"W 121°42'0"W 121°41'30"W 121°41'0"W 121°40'30"W 121°40'0"W 121°39'30"W 121°39'0"W 121°38'30"W 121°38'0"W 121°37'30"W 121°37'0"W 121°36'30"W 121°36'0"W 121°35'30"W 121°35'0"W 121°34'30"W

44°17'0"N
44°16'30"N
44°16'0"N
44°15'30"N
44°15'0"N
44°14'30"N
44°14'0"N
44°13'30"N
44°13'0"N
44°12'30"N
44°12'0"N
44°11'30"N

44°17'0"N
44°16'30"N
44°16'0"N
44°15'30"N
44°15'0"N
44°14'30"N
44°14'0"N
44°13'30"N
44°13'0"N
44°12'30"N
44°12'0"N
44°11'30"N

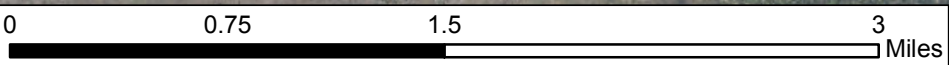


-  Heat Perimeter
-  Intense Heat
-  Scattered Heat



NAD83 UTM Zone 10
 Map Produced: 08/21/2017 0500 PDT
 IRIN: Elsa Hucks

MILLI 0843 CS
OR-DEF-000843
 Infrared Interpretation
 Date of Imagery: 08/21/2017 0231 PDT
 10,496 Acres



GeoEye, Earthstar Geographics, CNES/Airbus DS, USDA, USGS, AEX, Getmapping, Aerogrid, IGN, IGP, swisstopo, and the GIS User Community

121°47'0"W 121°46'30"W 121°46'0"W 121°45'30"W 121°45'0"W 121°44'30"W 121°44'0"W 121°43'30"W 121°43'0"W 121°42'30"W 121°42'0"W 121°41'30"W 121°41'0"W 121°40'30"W 121°40'0"W 121°39'30"W 121°39'0"W 121°38'30"W 121°38'0"W 121°37'30"W 121°37'0"W 121°36'30"W 121°36'0"W 121°35'30"W 121°35'0"W 121°34'30"W