



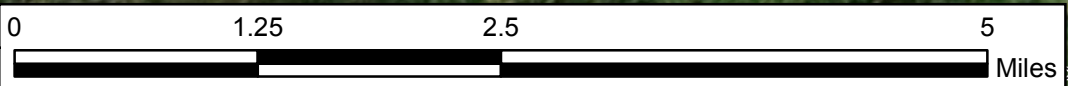
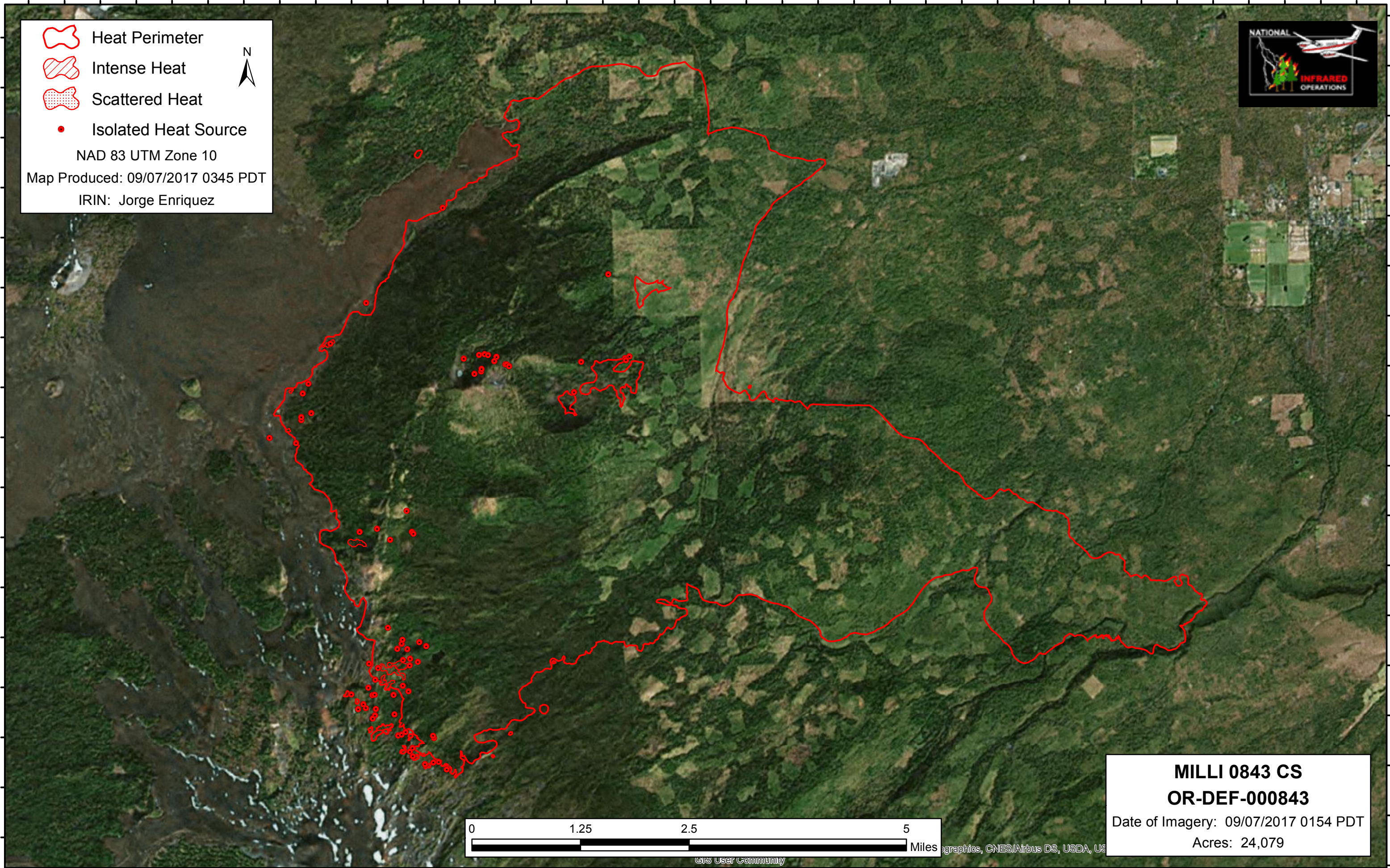


121°50'30"W 121°49'30"W 121°48'30"W 121°47'30"W 121°46'30"W 121°45'30"W 121°44'30"W 121°43'30"W 121°42'30"W 121°41'30"W 121°40'30"W 121°39'30"W 121°38'30"W 121°37'30"W 121°36'30"W 121°35'30"W 121°34'30"W 121°33'30"W 121°32'30"W

44°19'30"N
44°19'00"N
44°18'30"N
44°18'00"N
44°17'30"N
44°17'00"N
44°16'30"N
44°16'00"N
44°15'30"N
44°15'00"N
44°14'30"N
44°14'00"N
44°13'30"N
44°13'00"N
44°12'30"N
44°12'00"N
44°11'30"N

44°19'30"N
44°19'00"N
44°18'30"N
44°18'00"N
44°17'30"N
44°17'00"N
44°16'30"N
44°16'00"N
44°15'30"N
44°15'00"N
44°14'30"N
44°14'00"N
44°13'30"N
44°13'00"N
44°12'30"N
44°12'00"N
44°11'30"N

 Heat Perimeter
 Intense Heat
 Scattered Heat
 Isolated Heat Source
 NAD 83 UTM Zone 10
 Map Produced: 09/07/2017 0345 PDT
 IRIN: Jorge Enriquez



MILLI 0843 CS
OR-DEF-000843
 Date of Imagery: 09/07/2017 0154 PDT
 Acres: 24,079

121°50'30"W 121°49'30"W 121°48'30"W 121°47'30"W 121°46'30"W 121°45'30"W 121°44'30"W 121°43'30"W 121°42'30"W 121°41'30"W 121°40'30"W 121°39'30"W 121°38'30"W 121°37'30"W 121°36'30"W 121°35'30"W 121°34'30"W 121°33'30"W 121°32'30"W