

AIR OPS
OR - DEF - 000848
OR - WIF - 170181

09/06/2017

Acres Milli - 24,025
 Nash - 5,706
 Nash+Separation - 13,194

09/05/2017 @1633

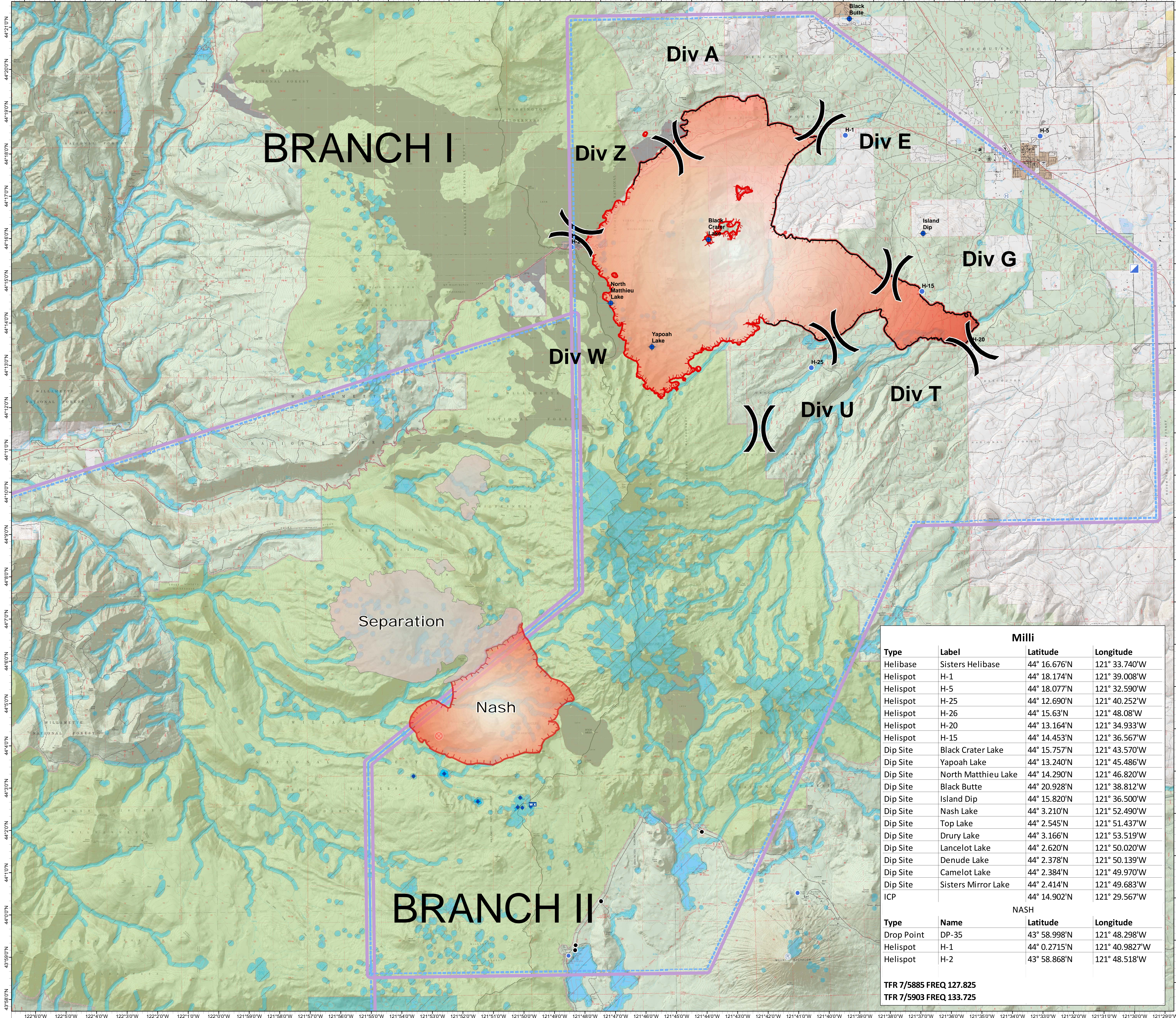


0 0.5 1 2 Miles

0 0.5 1 2 Kilometers

WGS 1984 UTM Zone 10N

Map Created: 9/5/2017, 9:23:10 PM



Legend

- ◆ Dip Site
- ⊕ Helibase
- Helispot
- ▣ Incident Command Post
- TFR
- ⚡ Retardant Avoidance
- ⚡ Waterbody Avoidance
- ⚡ TECPS Avoidance
- ⚡ Bureau of Land Management
- ⚡ U.S. Forest Service
- ⚡ Private/Unknown
- ⚡ Wilderness

Milli			
Type	Label	Latitude	Longitude
Helibase	Sisters Helibase	44° 16.676'N	121° 33.740'W
Helispot	H-1	44° 18.174'N	121° 39.008'W
Helispot	H-5	44° 18.077'N	121° 32.590'W
Helispot	H-25	44° 12.690'N	121° 40.252'W
Helispot	H-26	44° 15.63'N	121° 48.08'W
Helispot	H-20	44° 13.164'N	121° 34.933'W
Helispot	H-15	44° 14.453'N	121° 36.567'W
Dip Site	Black Crater Lake	44° 15.757'N	121° 43.570'W
Dip Site	Yapoah Lake	44° 13.240'N	121° 45.486'W
Dip Site	North Matthieu Lake	44° 14.290'N	121° 46.820'W
Dip Site	Black Butte	44° 20.928'N	121° 38.812'W
Dip Site	Island Dip	44° 15.820'N	121° 36.500'W
Dip Site	Nash Lake	44° 3.210'N	121° 52.490'W
Dip Site	Top Lake	44° 2.545'N	121° 51.437'W
Dip Site	Drury Lake	44° 3.166'N	121° 53.519'W
Dip Site	Lancelot Lake	44° 2.620'N	121° 50.020'W
Dip Site	Denude Lake	44° 2.378'N	121° 50.139'W
Dip Site	Camelot Lake	44° 2.384'N	121° 49.970'W
Dip Site	Sisters Mirror Lake	44° 2.414'N	121° 49.683'W
ICP		44° 14.902'N	121° 29.567'W

NASH			
Type	Name	Latitude	Longitude
Drop Point	DP-35	43° 58.998'N	121° 48.298'W
Helispot	H-1	44° 0.2715'N	121° 40.9827'W
Helispot	H-2	43° 58.868'N	121° 48.518'W

TFR 7/5885 FREQ 127.825
TFR 7/5903 FREQ 133.725