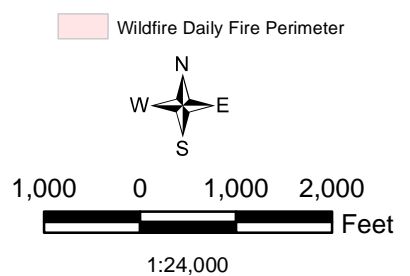




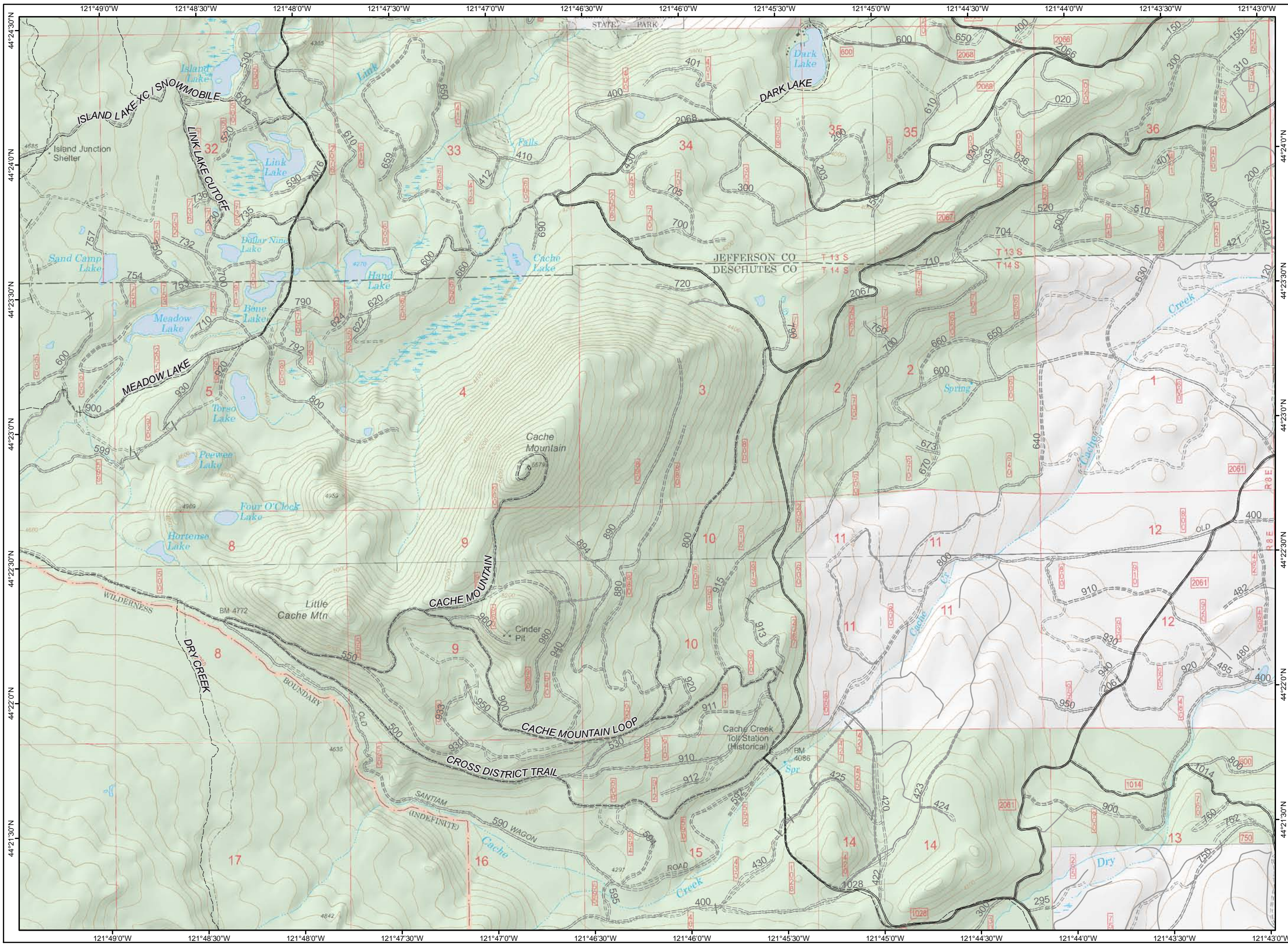
**MILLI FIRE  
IAP  
PAGE 1  
OR-DEF-00843  
9/06/2017**  
Acres 24,025  
9/05/2017 @ 1633



- Forest Boundary
- Uncontrolled Fire Edge
- Completed Line
- Completed Dozer Line
- Completed Hand Line
- Camp
- Mobile Weather Unit
- Trail Head
- Helispot
- Dip Site
- Drop Point
- Helibase
- Staging Area
- Water Source
- Division Break

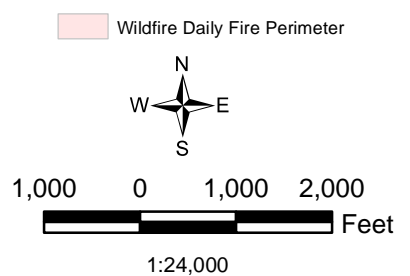


1	2	3
4	5	6
7	15	8
10	11	12
	13	14

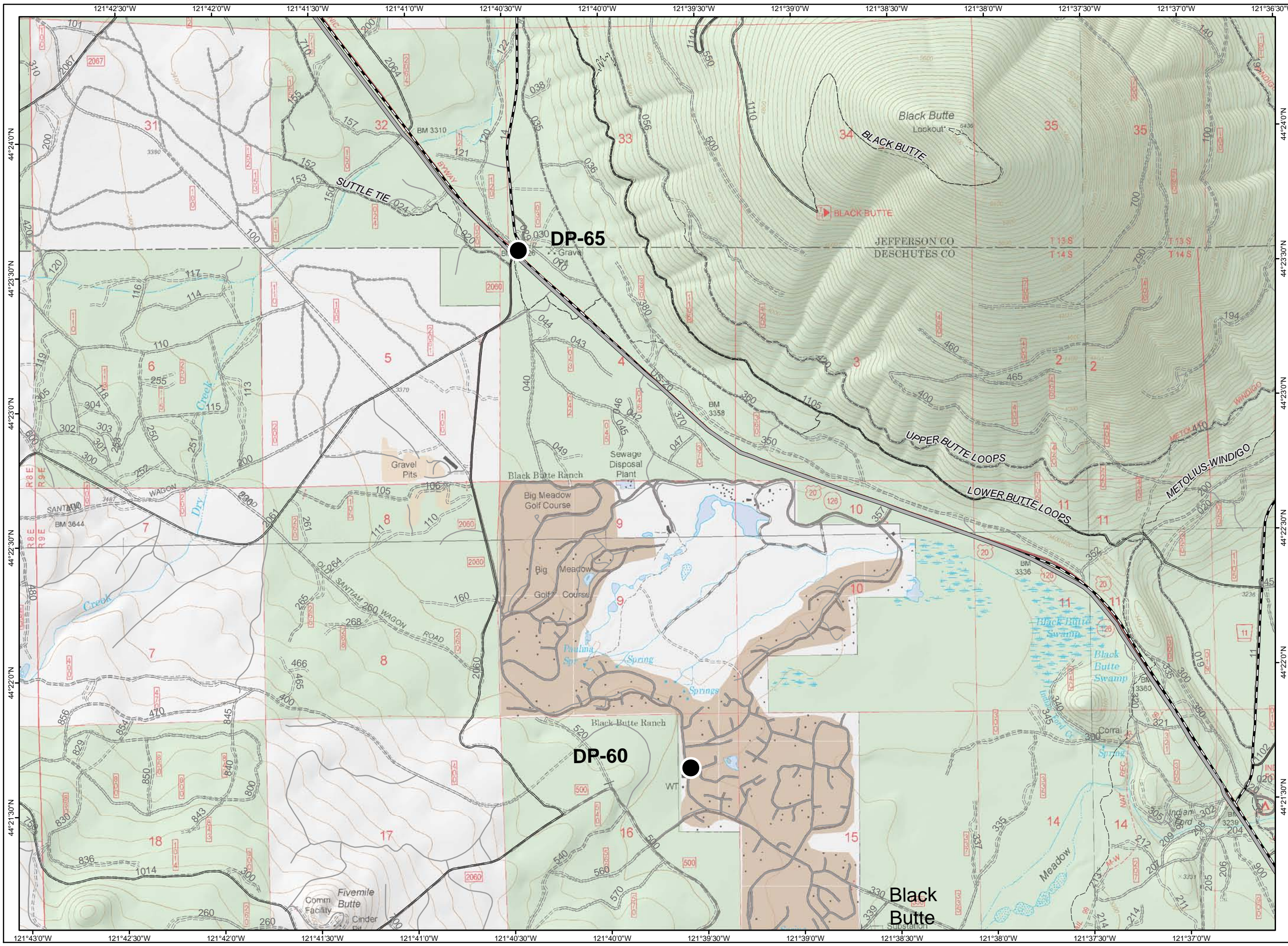




- Forest Boundary
- Uncontrolled Fire Edge
- Completed Line
- Completed Dozer Line
- Completed Hand Line
- Camp
- Mobile Weather Unit
- Trail Head
- Helispot
- Dip Site
- Drop Point
- Helibase
- Staging Area
- Water Source
- Division Break

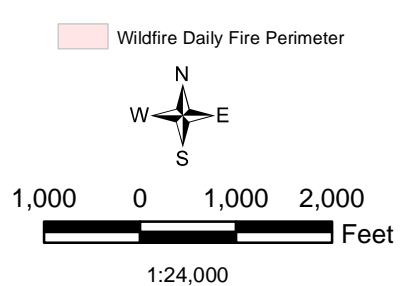


1	2	3
4	5	6
7	8	9
10	11	12
	13	14

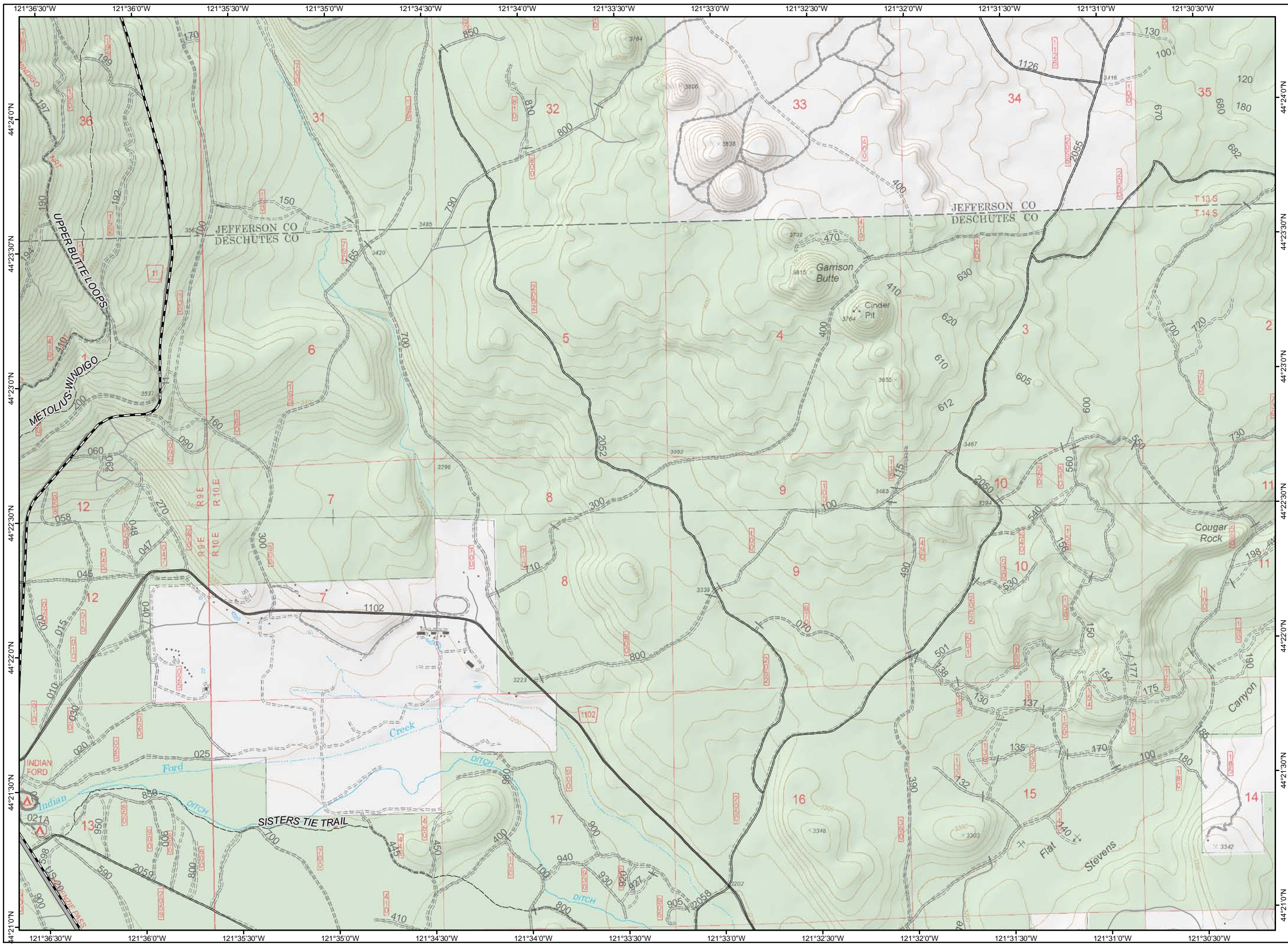




- Forest Boundary
- Uncontrolled Fire Edge
- Completed Line
- Completed Dozer Line
- Completed Hand Line
- Camp
- Mobile Weather Unit
- Trail Head
- Helispot
- Dip Site
- Drop Point
- Helibase
- Staging Area
- Water Source
- Division Break



1	2	3
4	5	6
7	15	9
10	11	12
	13	14





**MILLI FIRE  
IAP  
PAGE 4  
OR-DEF-00843  
9/06/2017**  
Acres 24,025  
9/05/2017 @ 1633



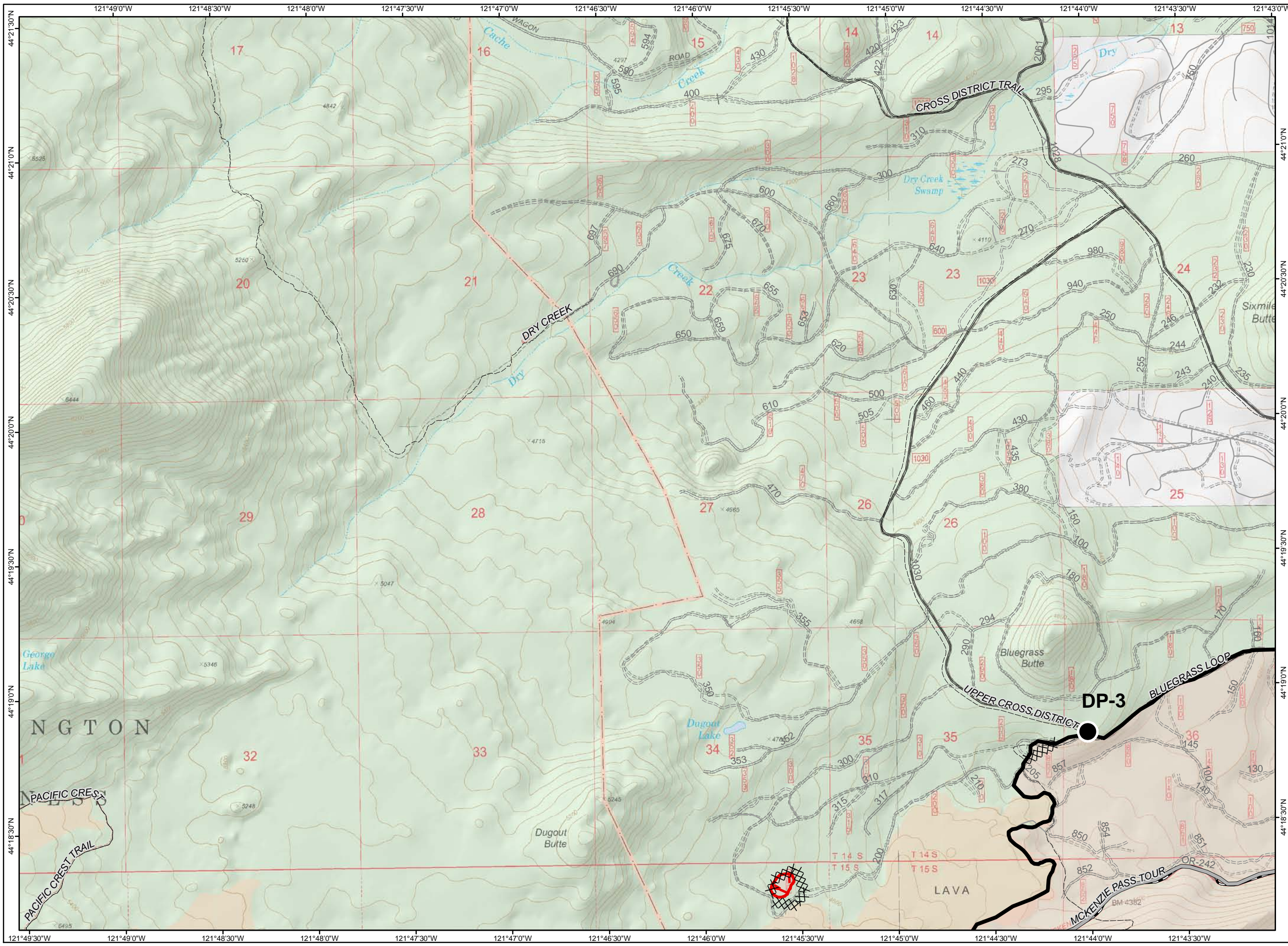
- Forest Boundary
- Uncontrolled Fire Edge
- Completed Line
- Completed Dozer Line
- Completed Hand Line
- Camp
- Mobile Weather Unit
- Trail Head
- Helispot
- Dip Site
- Drop Point
- Helibase
- Staging Area
- Water Source
- Division Break
- Wildfire Daily Fire Perimeter



1,000 0 1,000 2,000  
Feet

1:24,000

1	2	3
4	5	6
7	15	9
10	11	12
	13	14





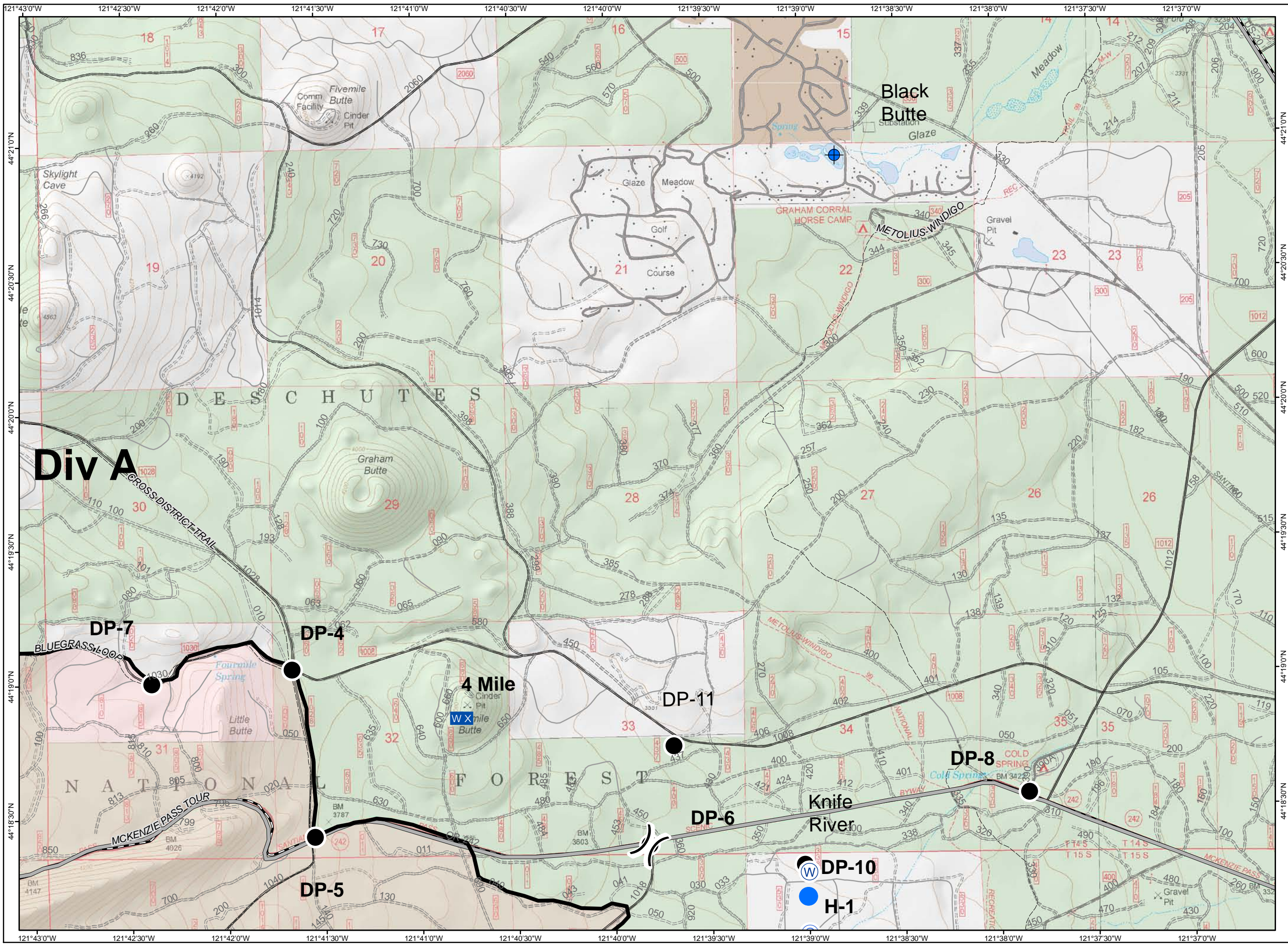
- Forest Boundary
- Uncontrolled Fire Edge
- Completed Line
- Completed Dozer Line
- Completed Hand Line
- Camp
- Mobile Weather Unit
- Trail Head
- Helispot
- Dip Site
- Drop Point
- Helibase
- Staging Area
- Water Source
- Division Break
- Wildfire Daily Fire Perimeter



1,000 0 1,000 2,000  
Feet

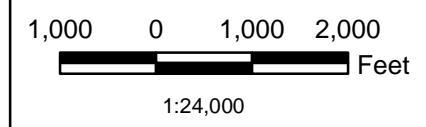
1:24,000

1	2	3
4	5	6
7	8	9
10	11	12
	13	14

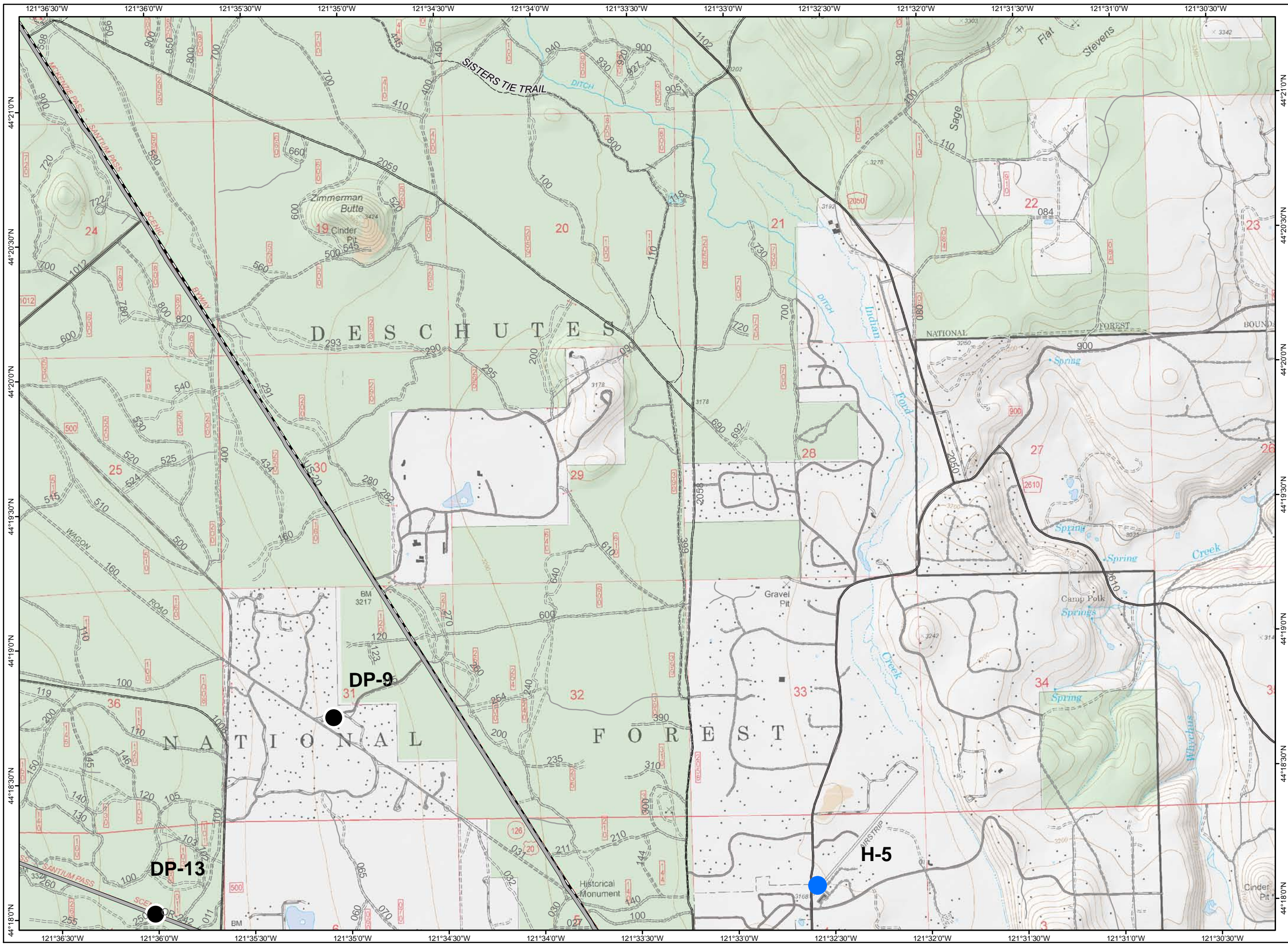




- Forest Boundary
- Uncontrolled Fire Edge
- Completed Line
- Completed Dozer Line
- Completed Hand Line
- Camp
- Mobile Weather Unit
- Trail Head
- Helispot
- Dip Site
- Drop Point
- Helibase
- Staging Area
- Water Source
- Division Break
- Wildfire Daily Fire Perimeter

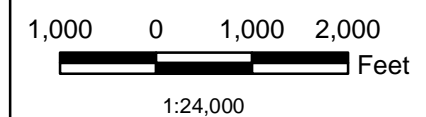


1	2	3
4	5	6
7	8	9
10	11	12
	13	14

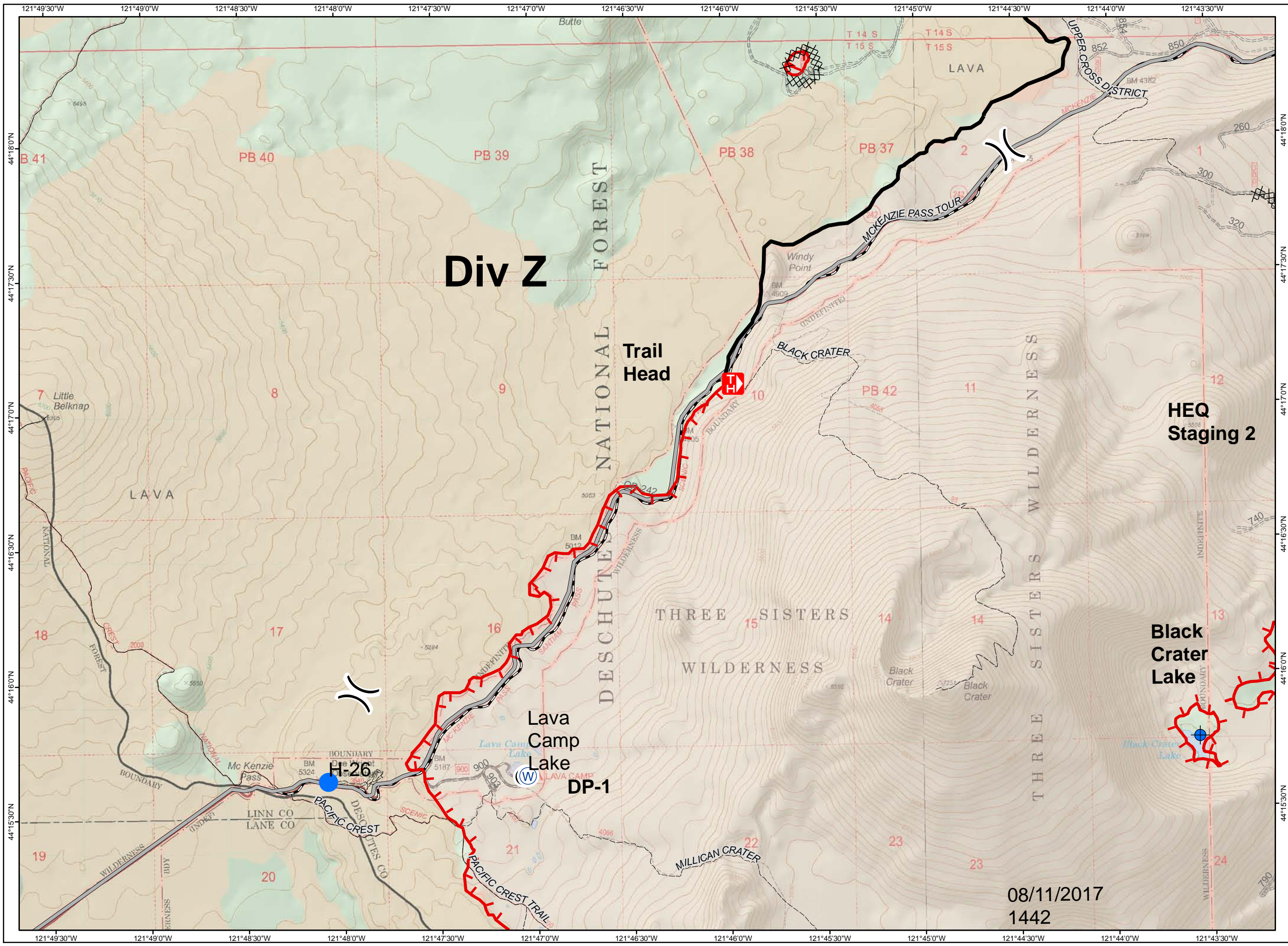


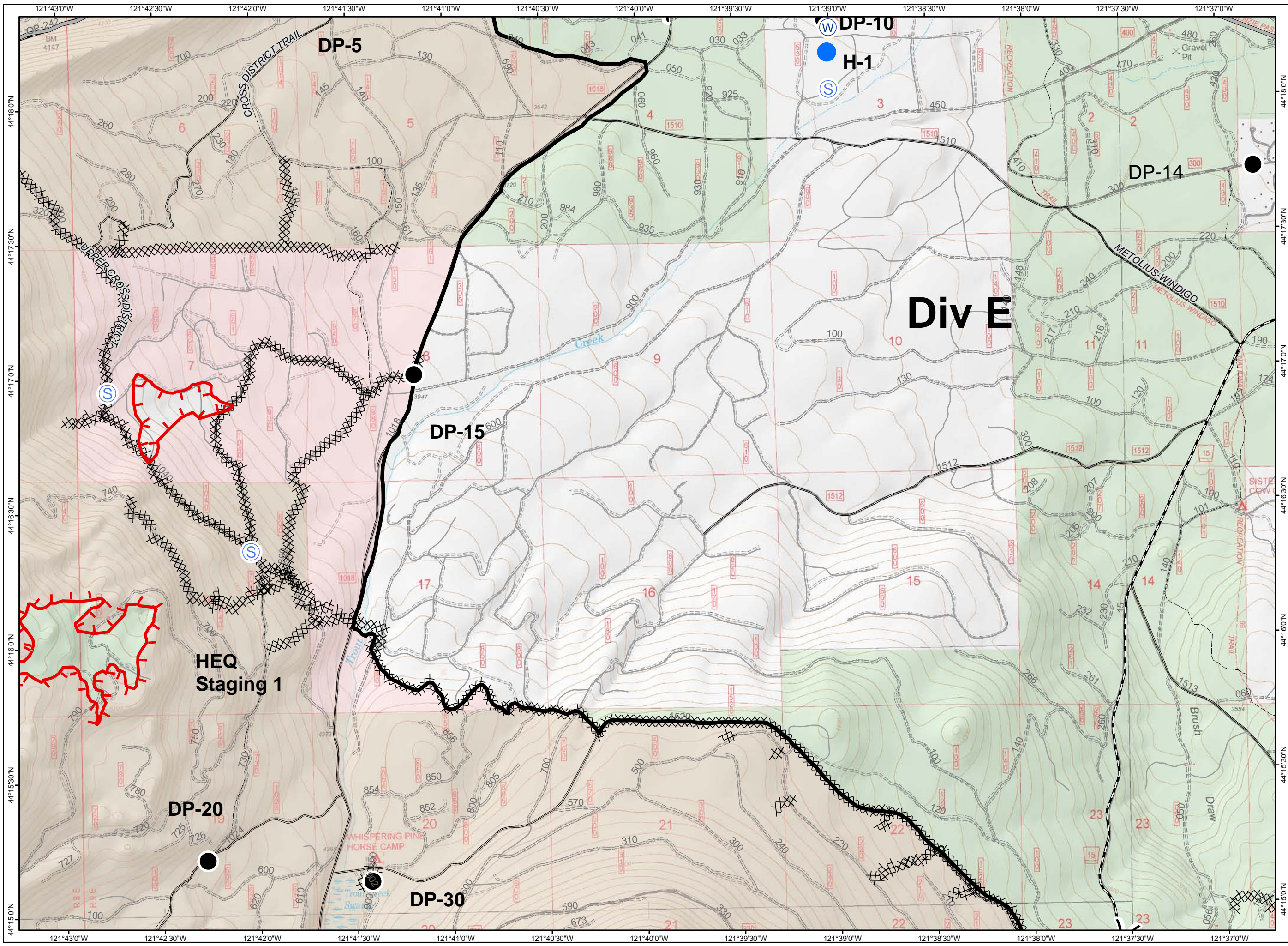


- ▭ Forest Boundary
- ┆┆┆ Uncontrolled Fire Edge
- Completed Line
- ⊗ ⊗ Completed Dozer Line
- H - Completed Hand Line
- ⊙ Camp
- W X Mobile Weather Unit
- T Trail Head
- Helispot
- ⊕ Dip Site
- Drop Point
- ⊕ Helibase
- ⊙ Staging Area
- ⊙ Water Source
- )( Division Break
- ▭ Wildfire Daily Fire Perimeter

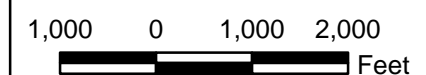


1	2	3
4	5	6
7	15	8
10	11	12
	13	14





- Forest Boundary
- Uncontrolled Fire Edge
- Completed Line
- Completed Dozer Line
- Completed Hand Line
- Camp
- Mobile Weather Unit
- Trail Head
- Helispot
- Dip Site
- Drop Point
- Helibase
- Staging Area
- Water Source
- Division Break
- Wildfire Daily Fire Perimeter



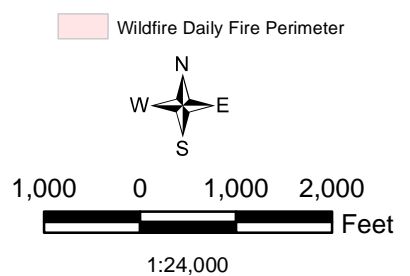
1:24,000

1	2	3
4	5	6
7	15	8
10	11	12
	13	14

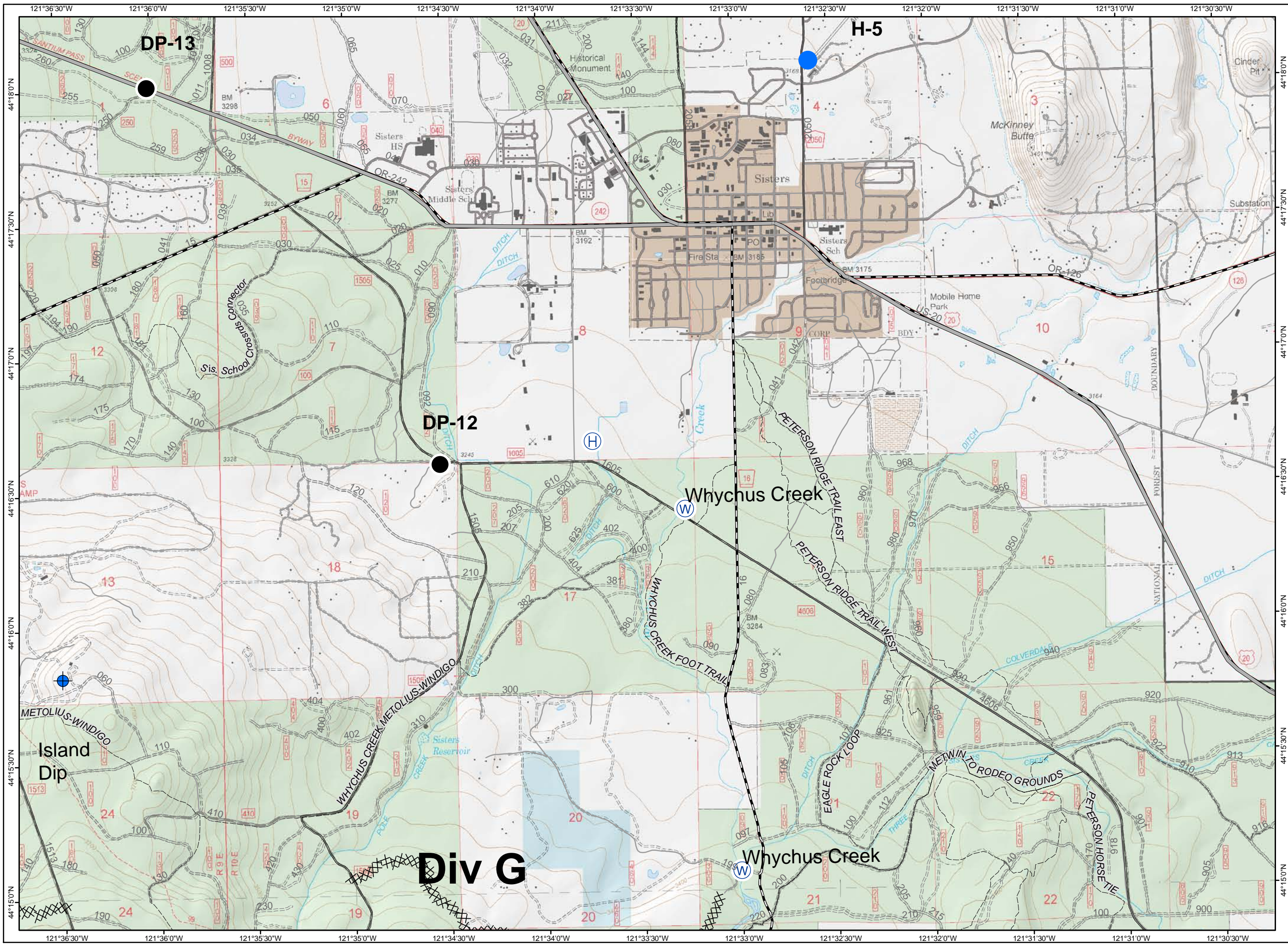




- Forest Boundary
- Uncontrolled Fire Edge
- Completed Line
- Completed Dozer Line
- Completed Hand Line
- Camp
- Mobile Weather Unit
- Trail Head
- Helispot
- Dip Site
- Drop Point
- Helibase
- Staging Area
- Water Source
- Division Break



1	2	3
4	5	6
7	15	8
10	11	12
	13	14

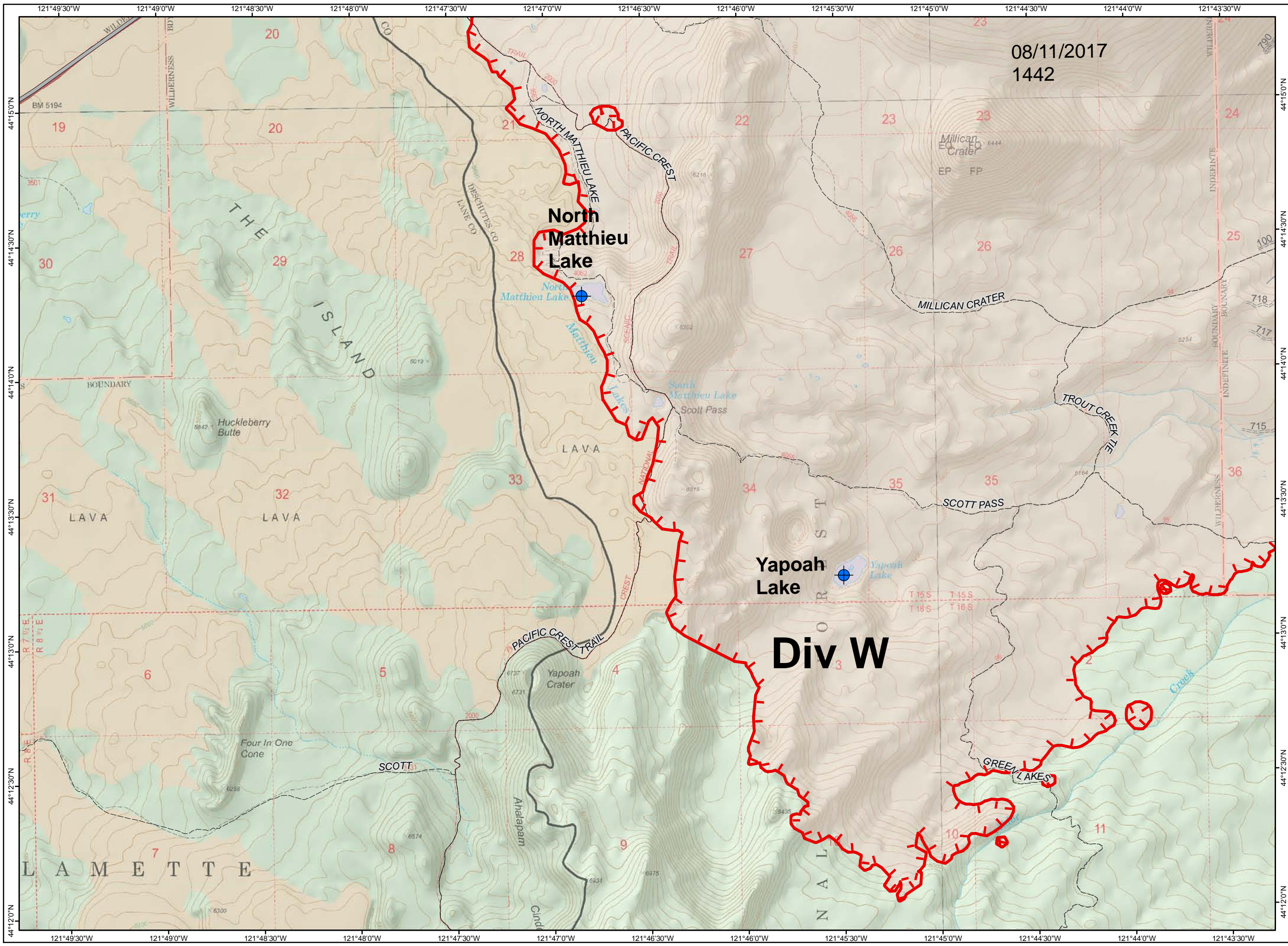
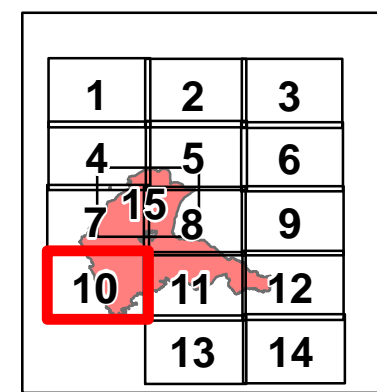
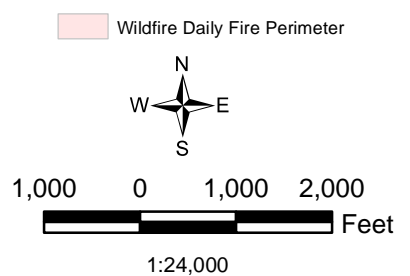




**MILLI FIRE IAP**  
**PAGE 10**  
**OR-DEF-000843**  
**9/06/2017**  
 Acres 24,025  
 9/05/2017 @ 1633



- Forest Boundary
- Uncontrolled Fire Edge
- Completed Line
- Completed Dozer Line
- Completed Hand Line
- Camp
- Mobile Weather Unit
- Trail Head
- Helispot
- Dip Site
- Drop Point
- Helibase
- Staging Area
- Water Source
- Division Break



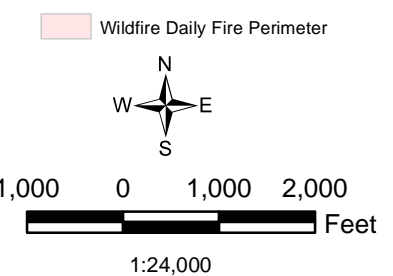
08/11/2017  
1442

**North Matthieu Lake**

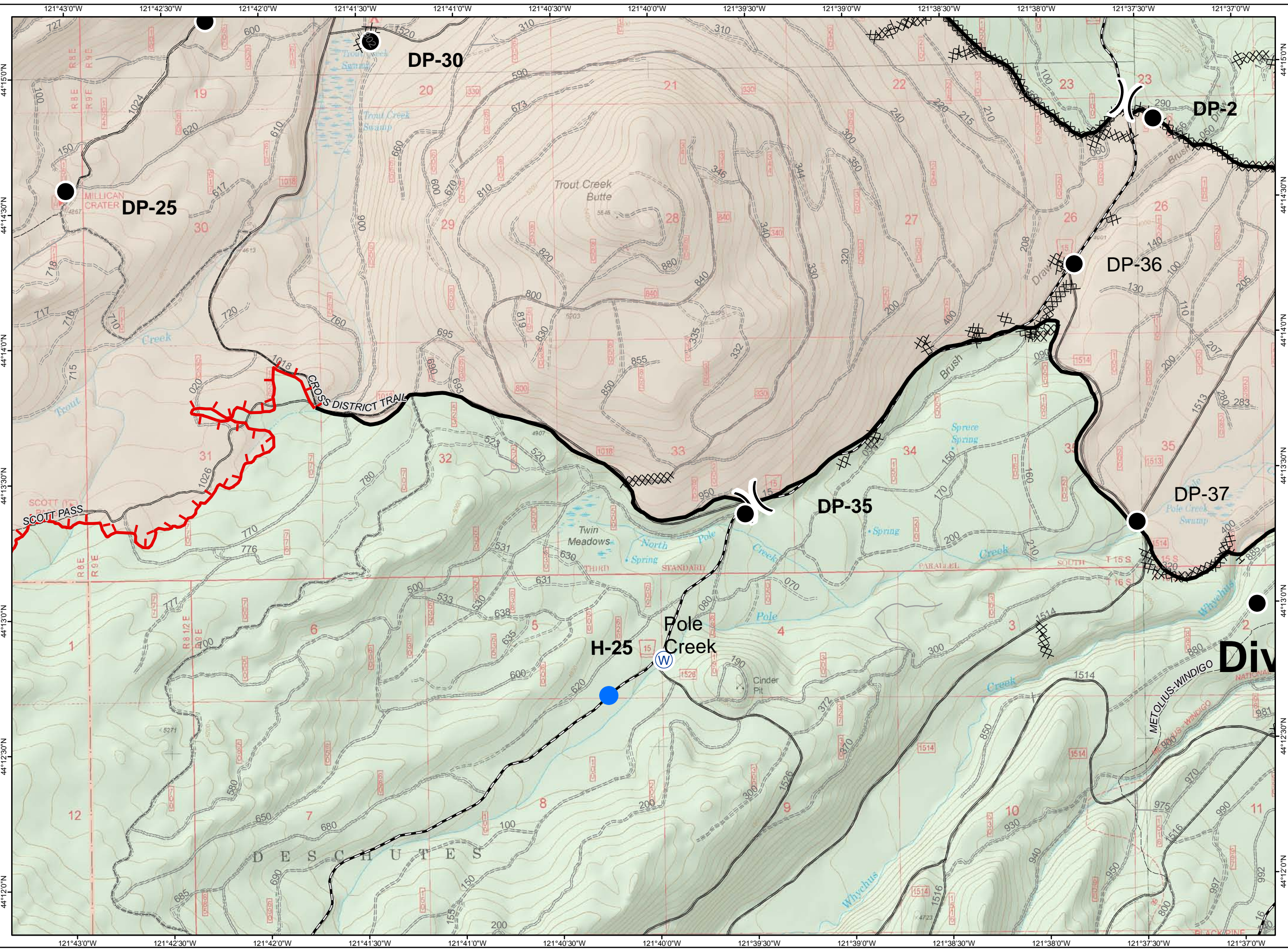
**Yapoah Lake**  
**Div W**



- Forest Boundary
- Uncontrolled Fire Edge
- Completed Line
- Completed Dozer Line
- Completed Hand Line
- Camp
- Mobile Weather Unit
- Trail Head
- Helispot
- Dip Site
- Drop Point
- Helibase
- Staging Area
- Water Source
- Division Break

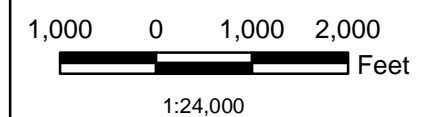


1	2	3
4	5	6
7	15	9
10	11	12
	13	14

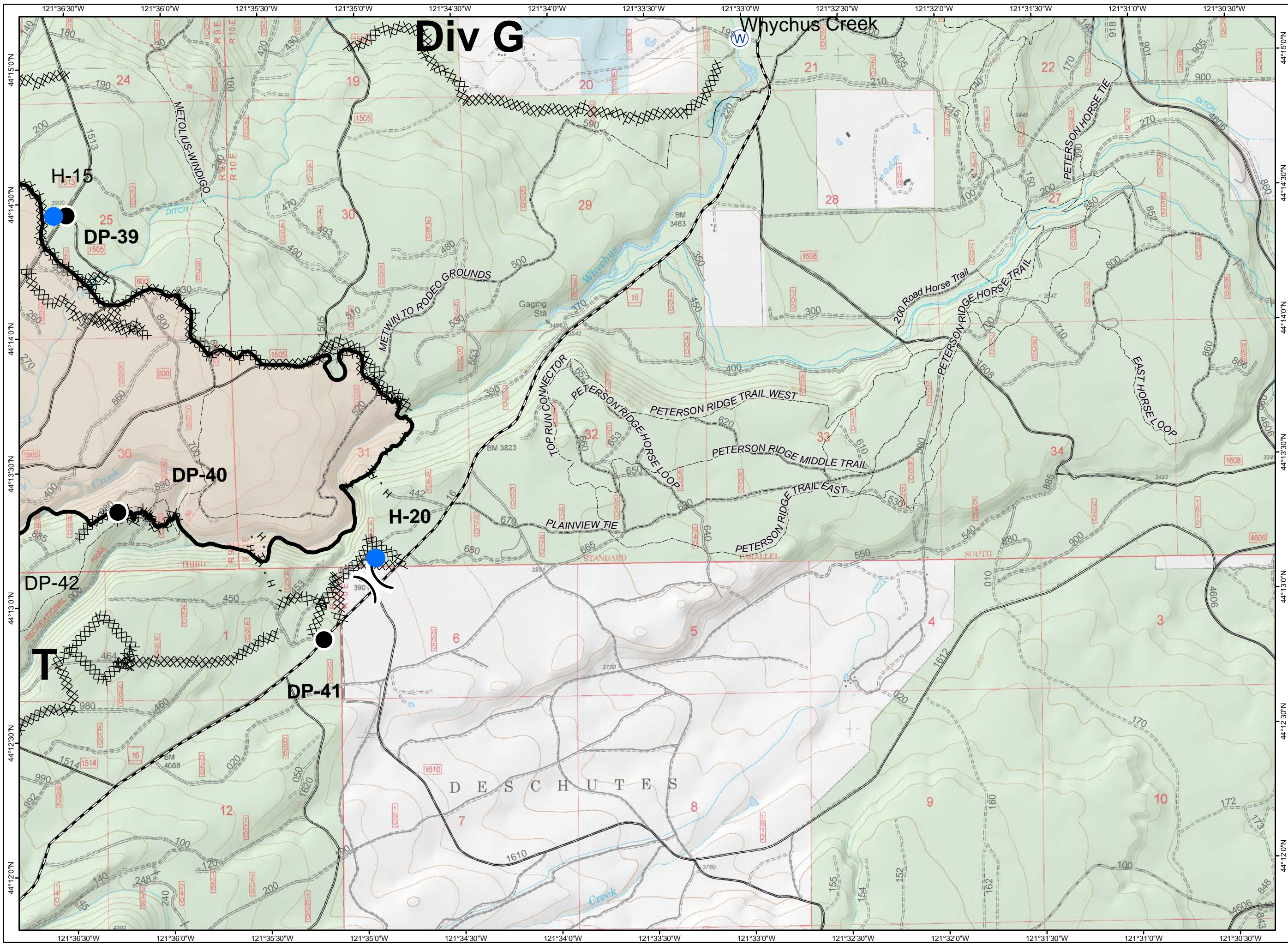




- Forest Boundary
- Uncontrolled Fire Edge
- Completed Line
- Completed Dozer Line
- Completed Hand Line
- Camp
- Mobile Weather Unit
- Trail Head
- Helispot
- Dip Site
- Drop Point
- Helibase
- Staging Area
- Water Source
- Division Break
- Wildfire Daily Fire Perimeter



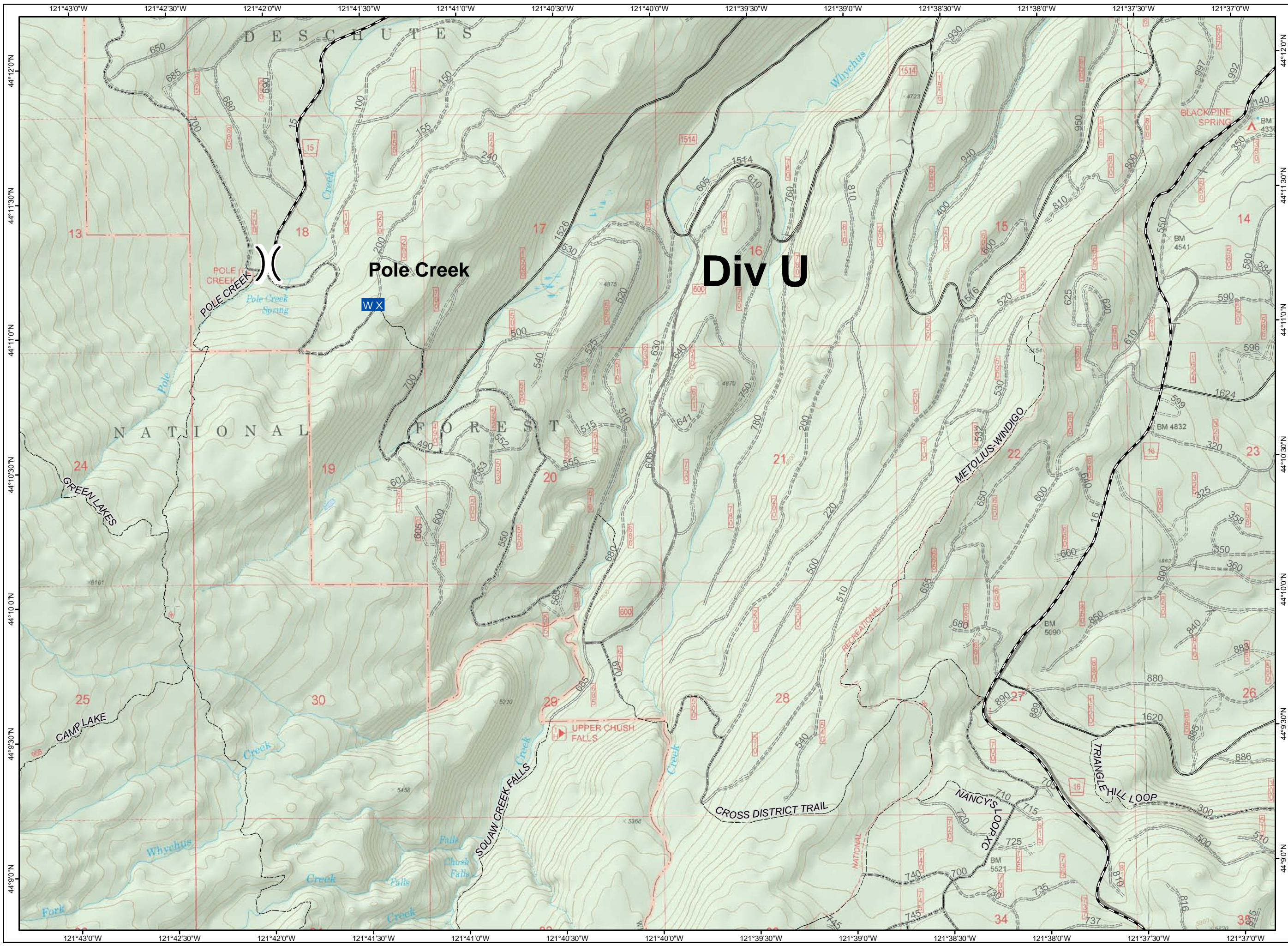
1	2	3
4	5	6
7	15	8
10	11	12
	13	14



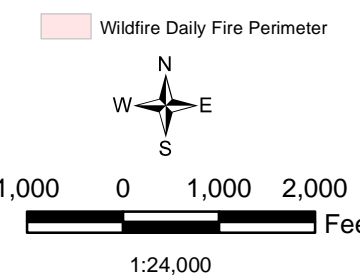
# Div G

Whychus Creek

DESCHUTES



- Forest Boundary
- Uncontrolled Fire Edge
- Completed Line
- Completed Dozer Line
- Completed Hand Line
- Camp
- Mobile Weather Unit
- Trail Head
- Helispot
- Dip Site
- Drop Point
- Helibase
- Staging Area
- Water Source
- Division Break



1	2	3
4	5	6
7	15	9
10	11	12
	13	14



**MILLI FIRE IAP**  
**PAGE 14**  
**OR-DEF-000843**  
**9/06/2017**  
 Acres 24,025  
 9/05/2017 @ 1633

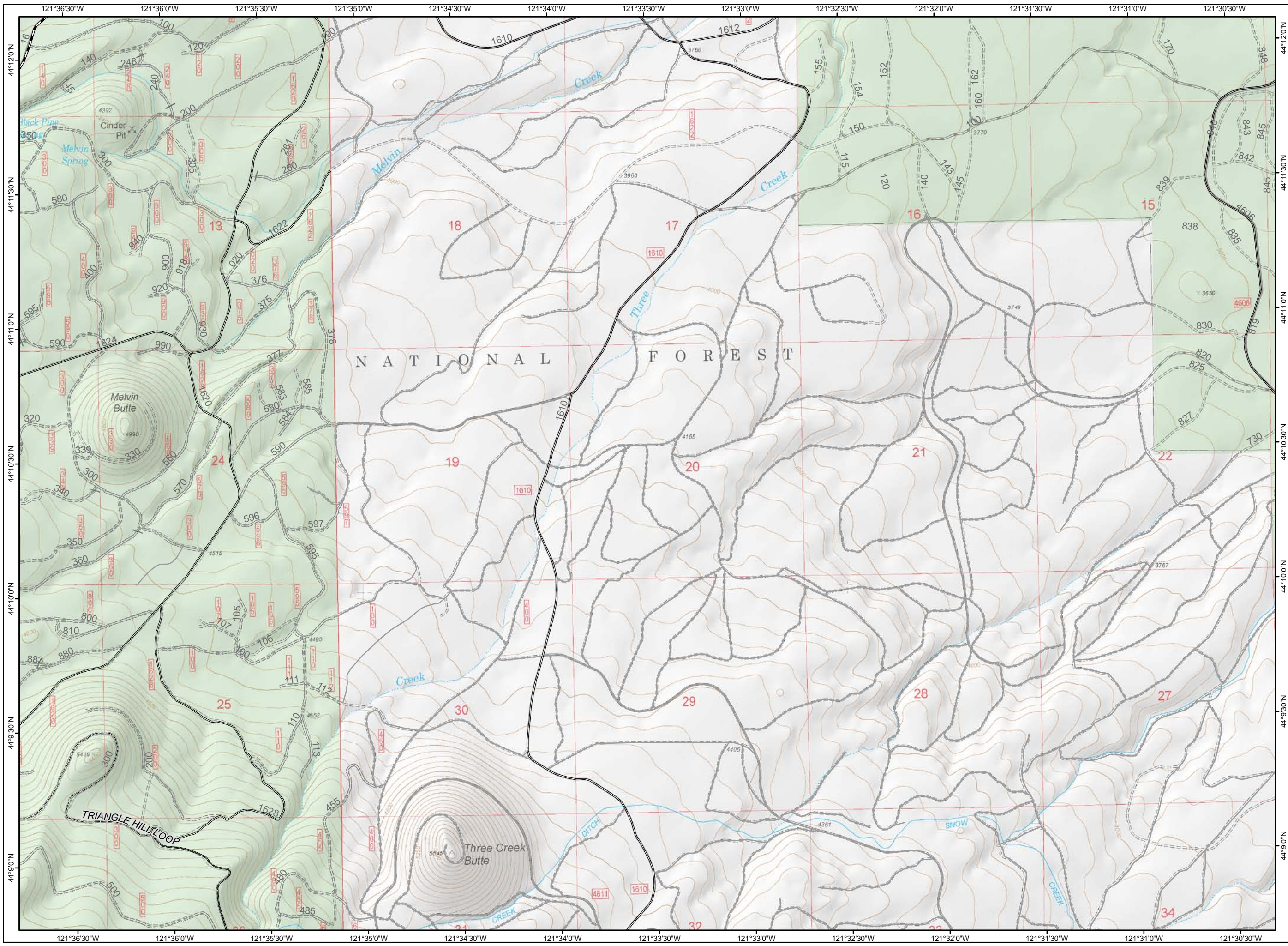


- Forest Boundary
- Uncontrolled Fire Edge
- Completed Line
- Completed Dozer Line
- Completed Hand Line
- Camp
- Mobile Weather Unit
- Trail Head
- Helispot
- Dip Site
- Drop Point
- Helibase
- Staging Area
- Water Source
- Division Break
- Wildfire Daily Fire Perimeter



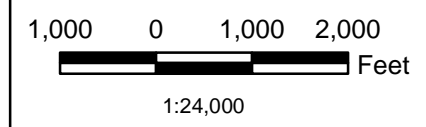
1,000 0 1,000 2,000 Feet  
 1:24,000

1	2	3
4	5	6
7	15	8
10	11	12
	13	14





- Forest Boundary
- Uncontrolled Fire Edge
- Completed Line
- Completed Dozer Line
- Completed Hand Line
- Camp
- Mobile Weather Unit
- Trail Head
- Helispot
- Dip Site
- Drop Point
- Helibase
- Staging Area
- Water Source
- Division Break
- Wildfire Daily Fire Perimeter



1	2	3
4	5	6
7	15	8
10	11	12
	13	14

