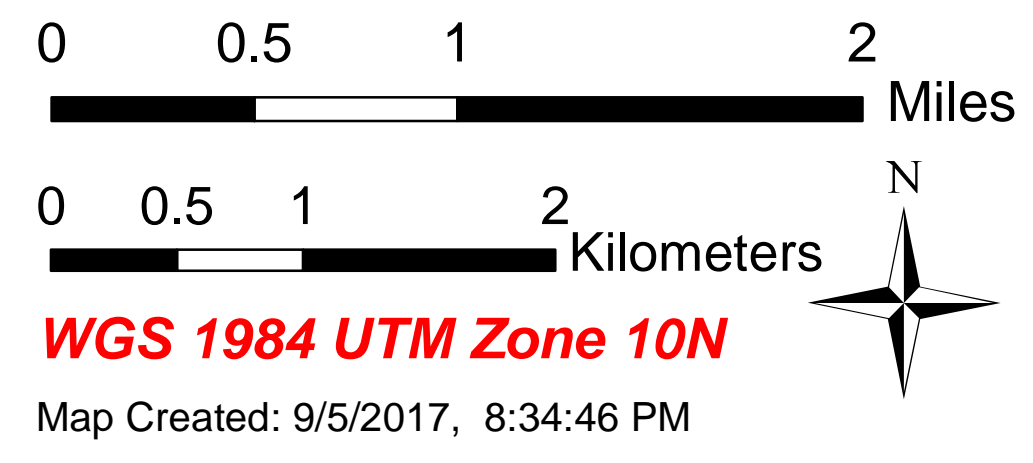


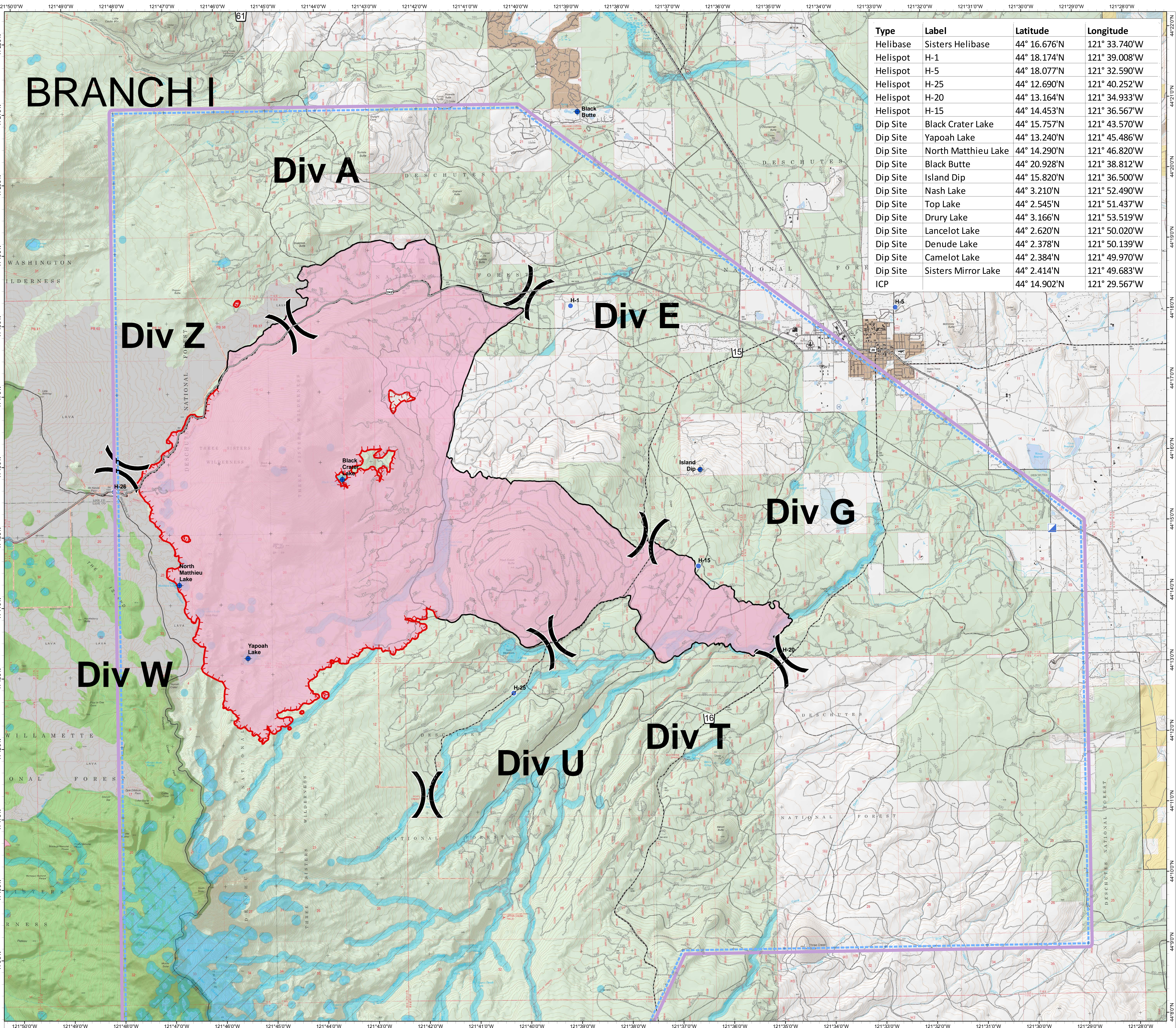
MILLI PILOT
OR - DEF - 000848

09/06/2017

Acres 24,025
9/05/2017 @ 1633



| Legend | |
|-----------|-----------------------|
| | TFR |
| | Dip Site |
| | Helibase |
| | Helispot |
| | Incident Command Post |
| | Retardant Avoidance |
| | Waterbody Avoidance |
| | TECPS Avoidance |
| | Wilderness |
| Ownership | |
| | Forest Service |
| | PVT |
| | BLM |
| | State |



| Type | Label | Latitude | Longitude |
|----------|---------------------|--------------|---------------|
| Helibase | Sisters Helibase | 44° 16.676'N | 121° 33.740'W |
| Helispot | H-1 | 44° 18.174'N | 121° 39.008'W |
| Helispot | H-5 | 44° 18.077'N | 121° 32.590'W |
| Helispot | H-25 | 44° 12.690'N | 121° 40.252'W |
| Helispot | H-20 | 44° 13.164'N | 121° 34.933'W |
| Helispot | H-15 | 44° 14.453'N | 121° 36.567'W |
| Dip Site | Black Crater Lake | 44° 15.757'N | 121° 43.570'W |
| Dip Site | Yapoah Lake | 44° 13.240'N | 121° 45.486'W |
| Dip Site | North Matthieu Lake | 44° 14.290'N | 121° 46.820'W |
| Dip Site | Black Butte | 44° 20.928'N | 121° 38.812'W |
| Dip Site | Island Dip | 44° 15.820'N | 121° 36.500'W |
| Dip Site | Nash Lake | 44° 3.210'N | 121° 52.490'W |
| Dip Site | Top Lake | 44° 2.545'N | 121° 51.437'W |
| Dip Site | Drury Lake | 44° 3.166'N | 121° 53.519'W |
| Dip Site | Lancelot Lake | 44° 2.620'N | 121° 50.020'W |
| Dip Site | Denude Lake | 44° 2.378'N | 121° 50.139'W |
| Dip Site | Camelot Lake | 44° 2.384'N | 121° 49.970'W |
| Dip Site | Sisters Mirror Lake | 44° 2.414'N | 121° 49.683'W |
| ICP | | 44° 14.902'N | 121° 29.567'W |