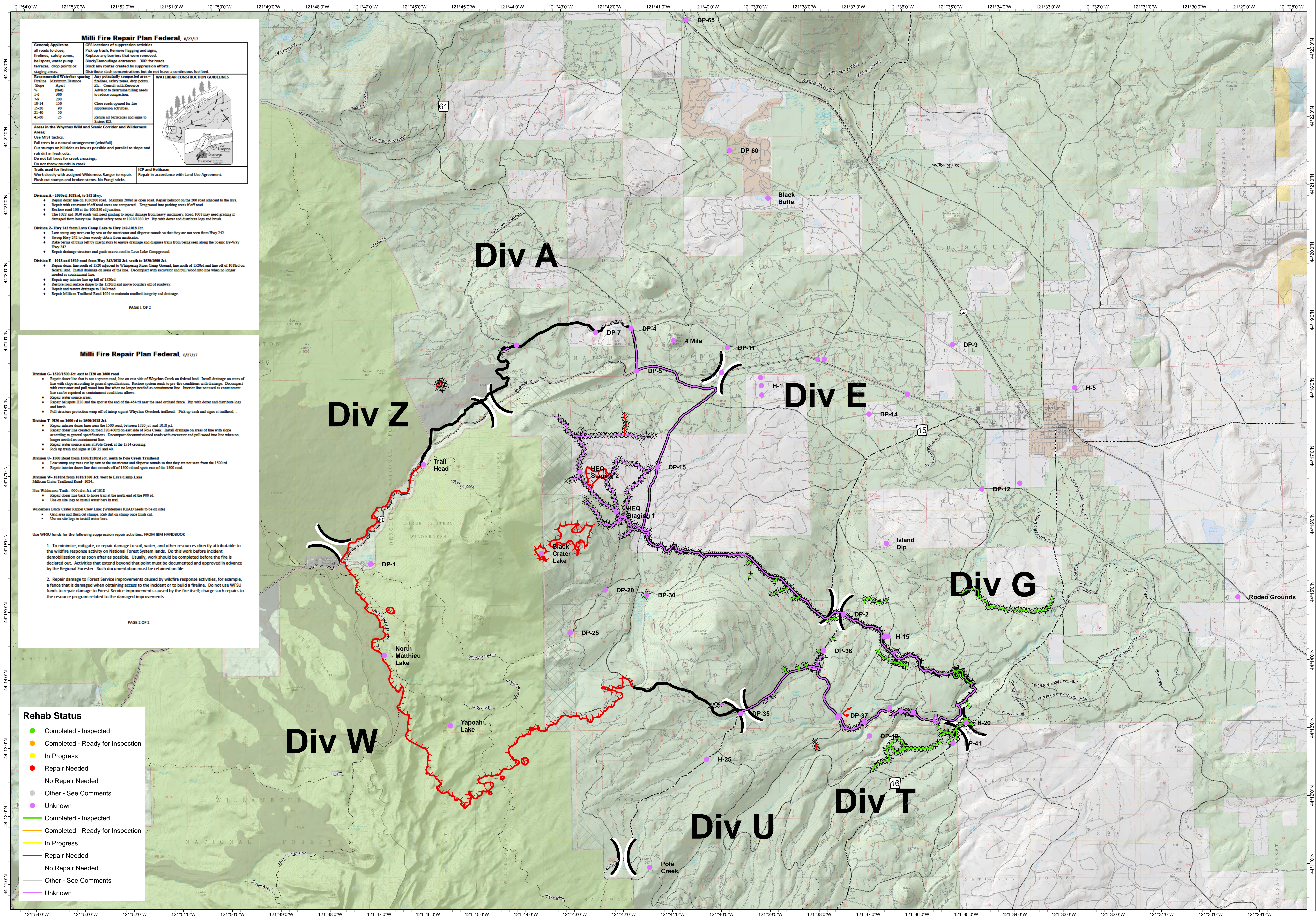


Incident Command Post	Mobile Weather Unit	Water Source	Completed Dozer Line	Completed Hand Line	BICYCLE	PACK AND SADDLE	CROSS COUNTRY SKI	Wilderness	Private/Unknown
Dip Site	Helipost	Pump	Unknown	Uncontrolled Fire Edge	HIKER/PEDESTRIAN	SNOWMOBILE	UNCLASSIFIED	Bureau of Land Management	State
Drop Point	Helibase	Staging Area	Completed Line	Uncontrolled Fire Edge				U.S. Forest Service	fire history 1960+



Milli Fire Repair Plan Federal 8/27/17

General: Applies to all roads to close, firelines, safety zones, heliposts, water pump terraces, drop points at staging areas.

Pick up trash, Remove flagging and signs, Replace any barriers that were removed, Block/Camouflage entrances - 300' for roads - Block any routes created by suppression efforts, Distribute slash concentrations but do not leave a continuous fuel bed.

Any potentially compacted area - Fireline, safety zones, drop points, etc. Consult with Resource Advisor to determine filling needs to reduce compaction.

Close roads opened for fire suppression activities.

Return all barricades and signs to Status RD.

ICP and Helibase: Repair in accordance with Land Use Agreement.

Flush cut stumps and broken stems. No Pungi-sticks.

Recommended Waterbar spacing

Slope	Maximum Distance
1-4	300
5-9	200
10-14	150
15-20	90
21-40	50
41-60	25

WATERBAR CONSTRUCTION GUIDELINES

Use MIST tactics.

Fall trees in a natural arrangement (windfall).

Cut stumps on hillsides as low as possible and parallel to slope and rub dirt in fresh cuts.

Do not fall trees for creek crossings.

Do not throw rounds in creek.

Trails used for fireline: Work closely with assigned Wilderness Ranger to repair. Flush cut stumps and broken stems. No Pungi-sticks.

PAGE 1 OF 2

Milli Fire Repair Plan Federal 8/27/17

- Division A - 1028rd, 1028rd to 242 Hwy:**
- Repair dozer line on 1028rd road. Maintain 200ft as open road. Repair helipost on the 200 road adjacent to the lava.
 - Repair with excavator if off road areas are compacted. Drag wood into parking areas if off road.
 - Reopen road 100 at the 100/1030 junction.
 - The 1028 and 1030 roads will need grading to repair damage from heavy machinery. Road 1008 may need grading if damaged from heavy use. Repair safety zone at 1028/1030 Jct. Rip with dozer and distribute logs and brush.
- Division Z - Hwy 242 from Lava Camp Lake to Hwy 242-1018 Jct.**
- Low stump any trees cut by saw or the masticator and disperse rounds so that they are not seen from Hwy 242.
 - Sweep Hwy 242 to clear woody debris from masticator.
 - Rake berm of trails left by masticators to ensure drainage and disperse trails from being seen along the Scenic By-Way Hwy 242.
 - Repair drainage structure and grade access road to Lava Camp Ground.
- Division E - 1018 and 1520 road from Hwy 242/1018 Jct. south to 1520/1500 Jct.**
- Repair dozer line south of 1520 adjacent to Whimper Pines Camp Ground, line north of 1520rd and line off of 1018rd on federal land. Install drainage on areas of the line. Decompart with excavator and pull wood into line when no longer needed as containment line.
 - Repair any interior line up hill of 1520rd.
 - Restore road surface shape to the 1520rd and move boulders off of roadway.
 - Repair and restore drainage to 1040 road.
 - Repair Millikan Trailhead Road 1024 to maintain roadbed integrity and drainage.
- Division C - 1520/1500 Jct. east to 1020 on 1600 road**
- Repair dozer line that is not a system road. Line on east side of Whycho Creek on federal land. Install drainage on areas of line with slope according to general specifications. Restore system roads to pre-fire conditions with drainage. Decompart with excavator and pull wood into line when no longer needed as containment line. Interior line not used as containment line can be repaired as containment line allows.
 - Repair water source areas.
 - Repair helipost 1020 and the spot at the end of the 664 rd near the seed orchard fence. Rip with dozer and distribute logs and brush.
 - Pull structure protection wrap off of interop sign at Whycho Overlook trailhead. Pick up trash and signs at trailhead.
- Division T - 1020 on 1600 rd to 1500/1018 Jct.**
- Repair interior dozer line near the 1500 road, between 1520 jct and 1018 jct.
 - Repair dozer line created on road 320/400rd on east side of Pole Creek. Install drainage on areas of line with slope according to general specifications. Decompart dimensioned roads with excavator and pull wood into line when no longer needed as containment line.
 - Repair water source areas at Pole Creek at the 1514 crossing.
 - Pick up trash and signs at DP 31 and 40.
- Division U - 1500 Road from 1500/1520rd jct. south to Pole Creek Trailhead**
- Low stump any trees cut by saw or the masticator and disperse rounds so that they are not seen from the 1500 rd.
 - Repair interior dozer line that extends off of 1500 rd and open east of the 1500 road.
- Division W - 1018rd from 1018/1500 Jct. west to Lava Camp Lake Millikan Crater Trailhead Road-1024.**
- Non-Wilderness Trails: 900 rd at Jct. of 1018
 - Repair dozer line back to lava trail at the north end of the 900 rd.
 - Use on site logs to install water bars in trail.
- Wilderness Black Crater Ragool Crew Line (Wilderness READ needs to be on site)**
- Grid area and flush cut stumps. Rub dirt on stump once flush cut.
 - Use on site logs to install water bars.

- Use WFSU funds for the following suppression repair activities: FROM IBM HANDBOOK
- To minimize, mitigate, or repair damage to soil, water, and other resources directly attributable to the wildfire response activity on National Forest System lands. Do this work before incident demobilization or as soon after as possible. Usually, work should be completed before the fire is declared out. Activities that extend beyond that point must be documented and approved in advance by the Regional Forester. Such documentation must be retained on file.
 - Repair damage to Forest Service improvements caused by wildfire response activities, for example, a fence that is damaged when obtaining access to the incident or to build a fireline. Do not use WFSU funds to repair damage to Forest Service improvements caused by the fire itself, charge such repairs to the resource program related to the damaged improvements.

PAGE 2 OF 2

Rehab Status

- Completed - Inspected
- Completed - Ready for Inspection
- In Progress
- Repair Needed
- No Repair Needed
- Other - See Comments
- Unknown

Legend for lines:

- Completed - Inspected
- Completed - Ready for Inspection
- In Progress
- Repair Needed
- No Repair Needed
- Other - See Comments
- Unknown