




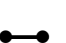




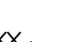

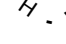
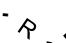


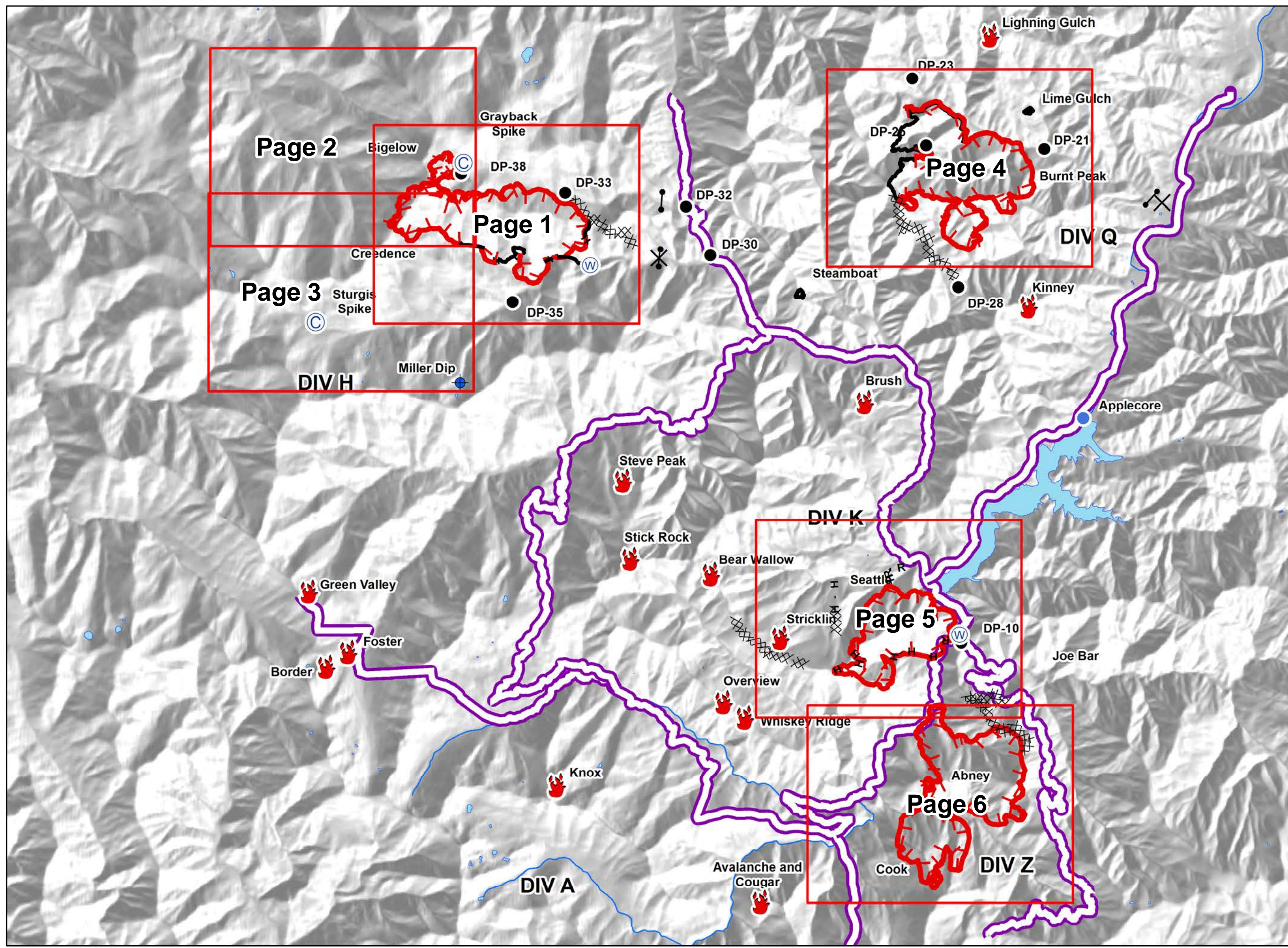
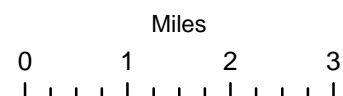


Miller Complex
OR-RSF-000647
8/22/2017

Legend

-  Camp
-  Closure
-  Dip Site
-  Drop Point
-  Fire Location
-  Gate
-  Helispot
-  Water Source
-  Uncontrolled Fire Edge
-  Completed Line
-  Completed Dozer Line
-  Completed Hand Line
-  Road as Completed Line
-  Division Break Lines
-  NHD Water Boundaries
-  Rivers



Page 2

Page 1

Page 3

Page 4

Page 5

Page 6

DIV H

DIV Q

DIV K

DIV A

DIV Z

Bigelow

Grayback Spike

Creedence

Sturgis Spike

Miller Dip

Green Valley

Foster

Border

Steve Peak

Stick Rock

Bear Wallow

Seattle R

Stricklin

Overview

Whiskey Ridge

Knox

Avalanche and Cougar

Lightning Gulch

Lime Gulch

Burnt Peak

Steamboat

Kinney

Brush

Applecore

Joe Bar

Abney

Cook

DP-38

DP-33

DP-32

DP-30

DP-35

DP-23

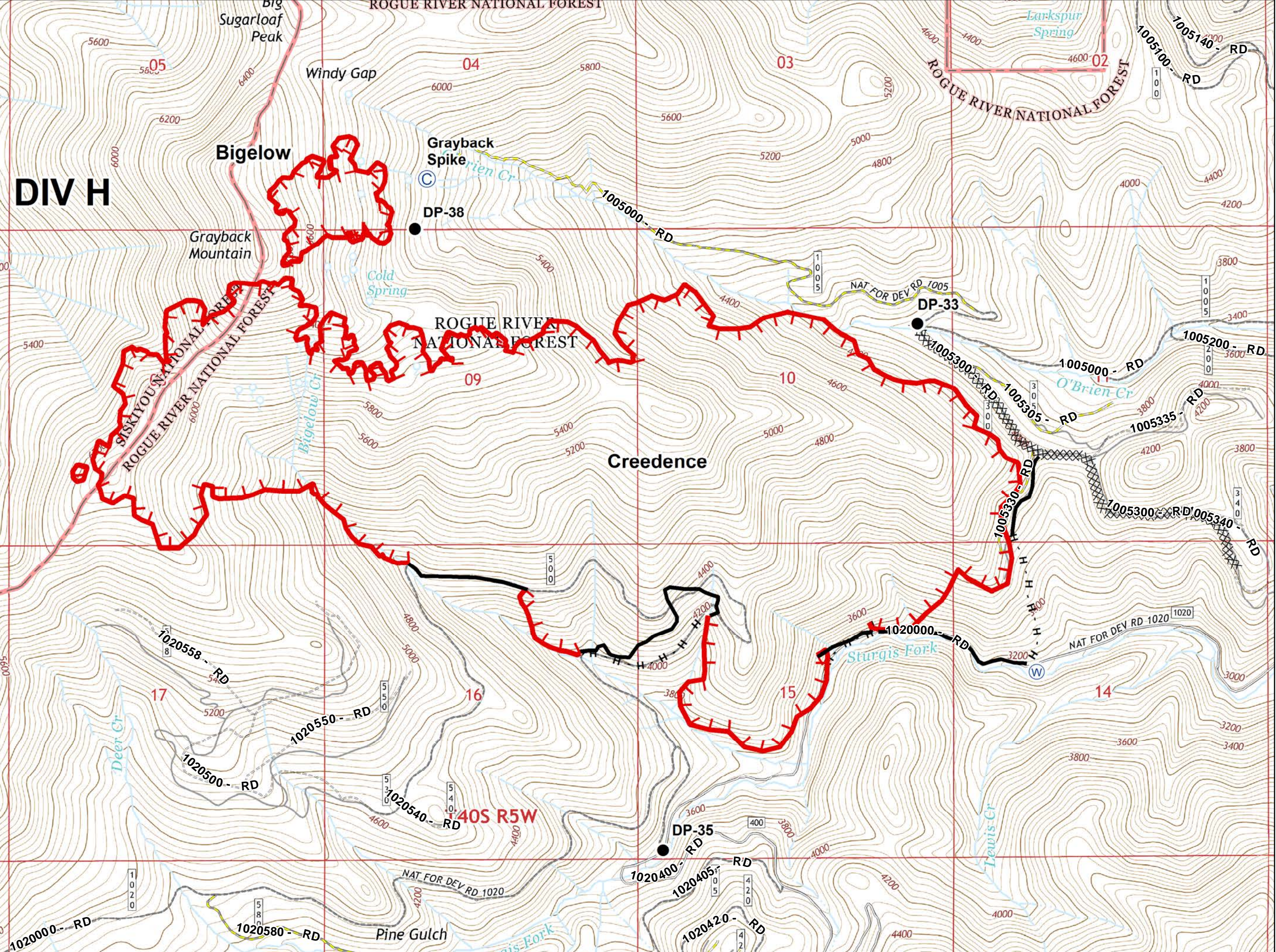
DP-25

DP-21

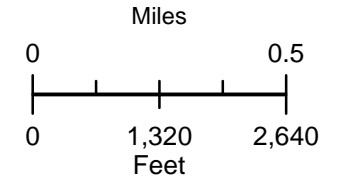
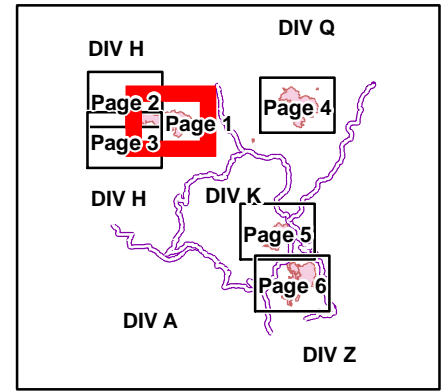
DP-28

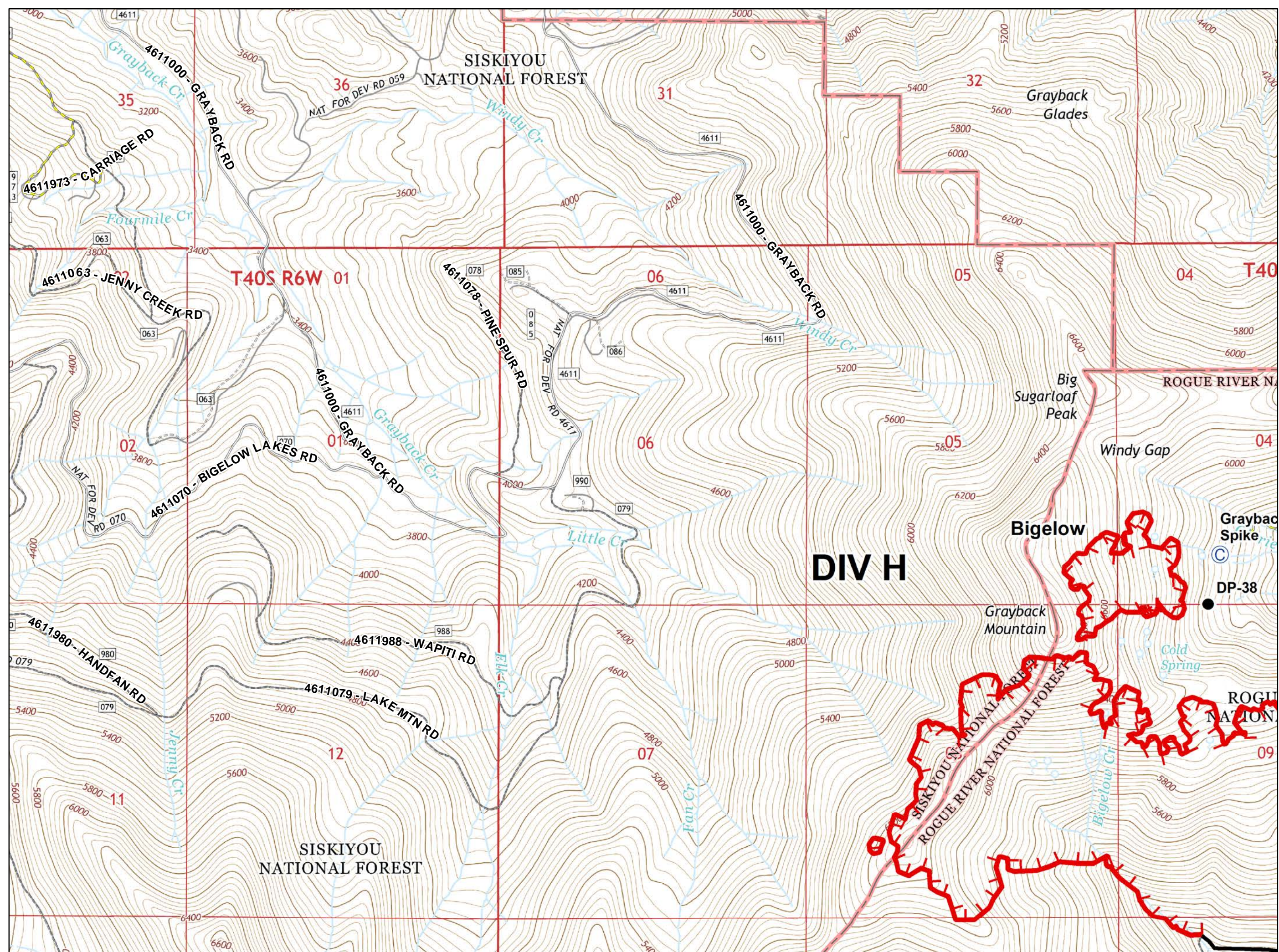
DP-10






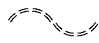

DIV H

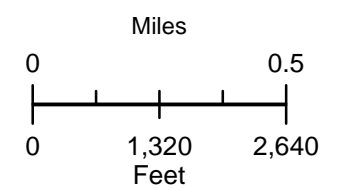
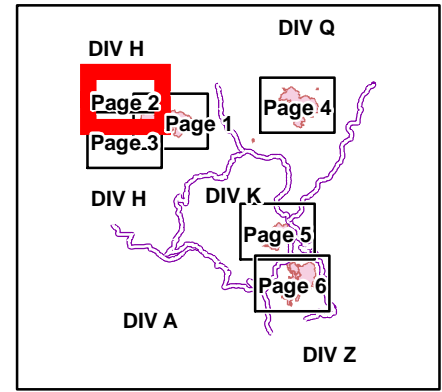


- Legend**
- Camp
 - Drop Point
 - Water Source
 - Uncontrolled Fire Edge
 - Completed Line
 - Completed Dozer Line
 - Completed Hand Line
- National Forest System Roads**
- 1 - BASIC CUSTODIAL CARE (CLOSED)
 - 2 - HIGH CLEARANCE VEHICLES
 - 3 - SUITABLE FOR PASSENGER CARS





- Legend**
-  Camp
 -  Drop Point
 -  Uncontrolled Fire Edge
 -  Completed Line
- National Forest System Roads**
- Operational Maintenance Level**
-  1 - BASIC CUSTODIAL CARE (CLOSED)
 -  2 - HIGH CLEARANCE VEHICLES
 -  3 - SUITABLE FOR PASSENGER CARS



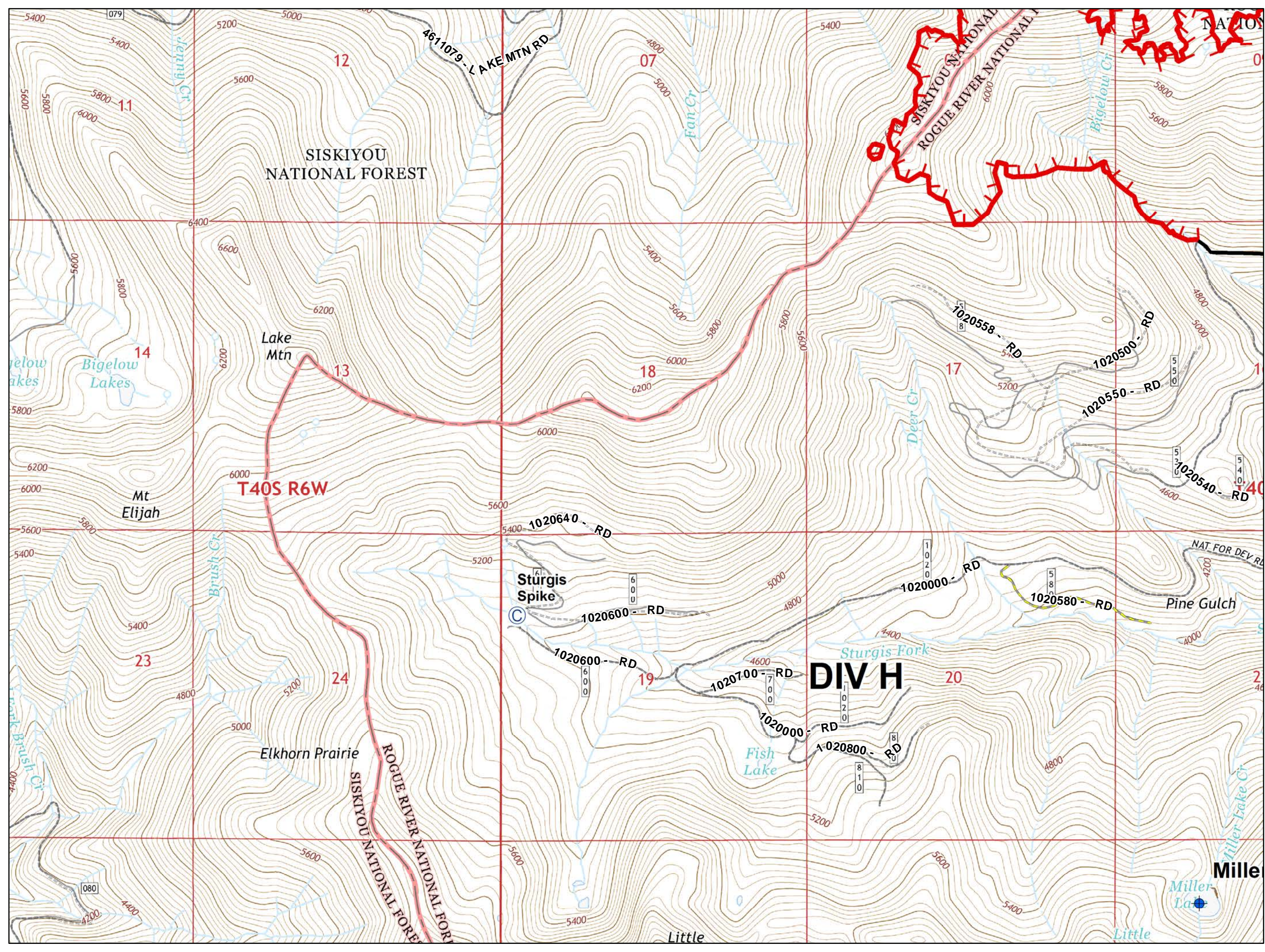
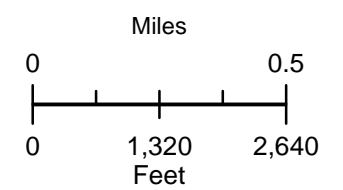
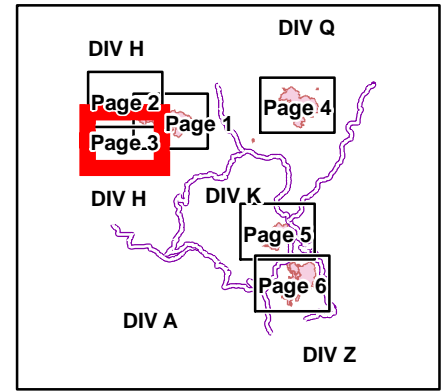
Legend

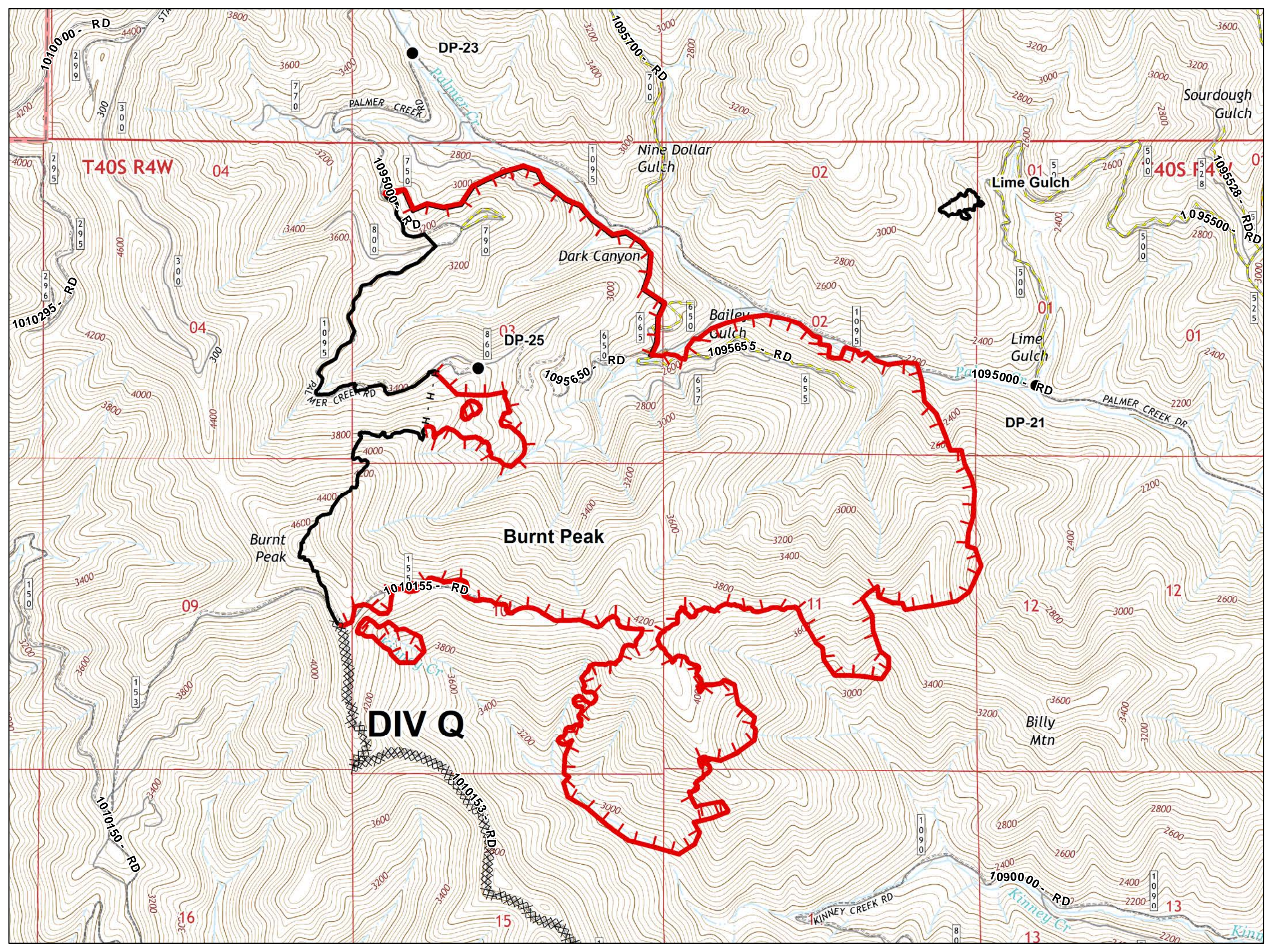
- Camp
- Dip Site
- Uncontrolled Fire Edge
- Completed Line

National Forest System Roads

Operational Maintenance Level

- 1 - BASIC CUSTODIAL CARE (CLOSED)
- 2 - HIGH CLEARANCE VEHICLES



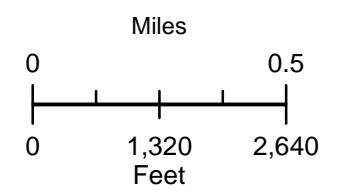
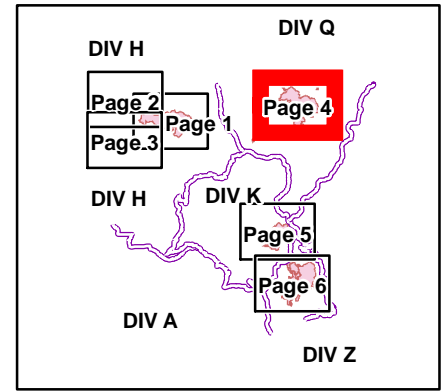


- Legend**
- Drop Point
 - Uncontrolled Fire Edge
 - Completed Line
 - Completed Dozer Line
 - Completed Hand Line






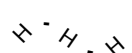
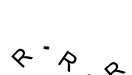
National Forest System Roads

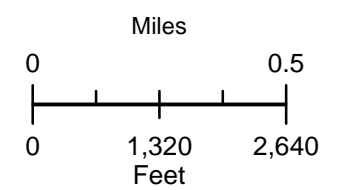
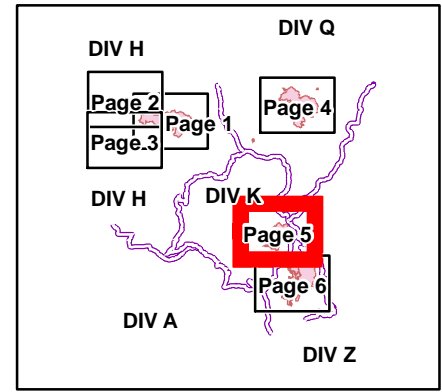
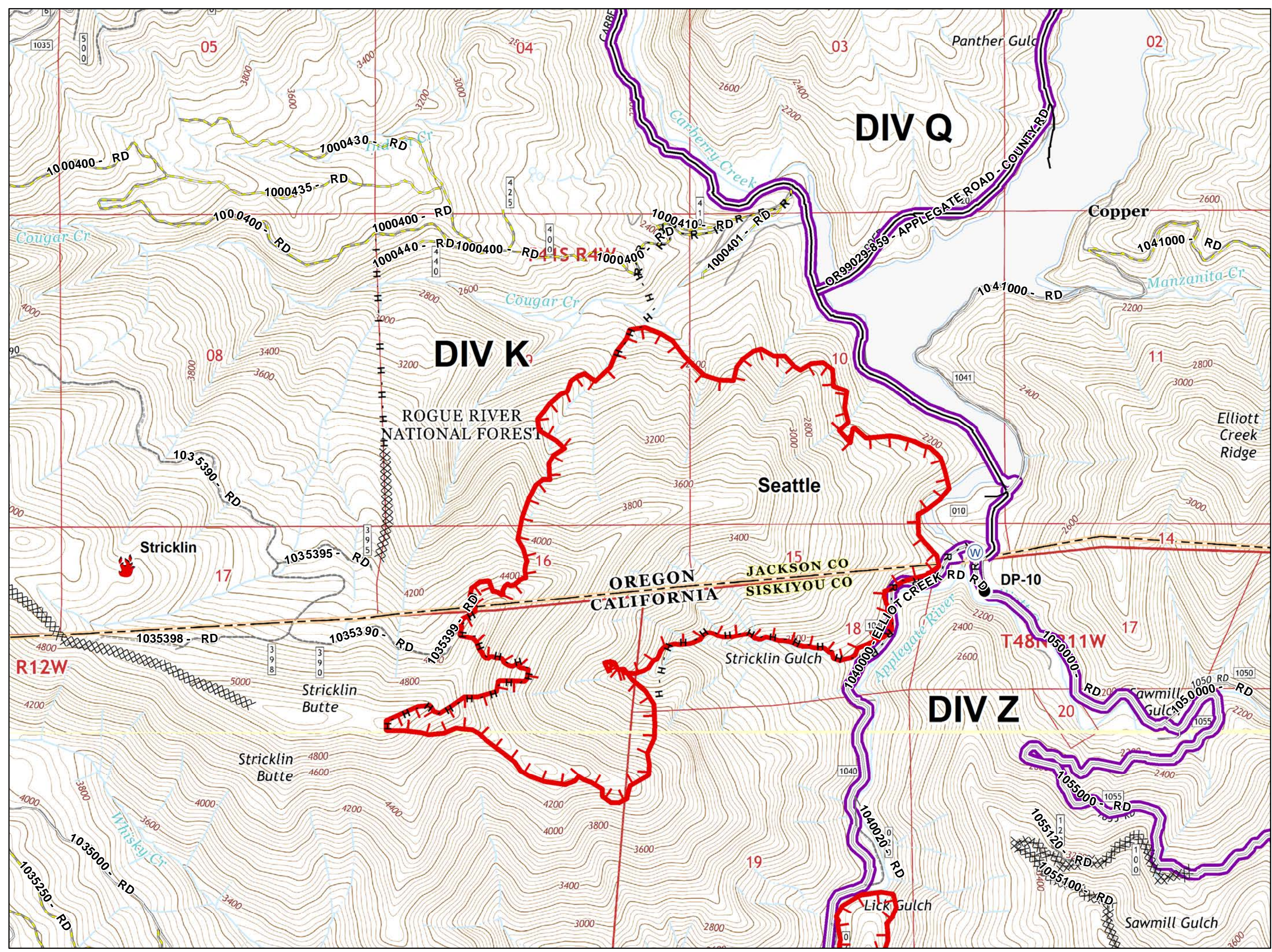
Operational Maintenance Level

- 1 - BASIC CUSTODIAL CARE (CLOSED)
- 2 - HIGH CLEARANCE VEHICLES
- 3 - SUITABLE FOR PASSENGER CARS





Legend

-  Drop Point
-  Fire Location
-  Water Source
-  Uncontrolled Fire Edge
-  Completed Dozer Line
-  Completed Hand Line
-  Road as Completed Line


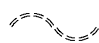




Legend

-  Uncontrolled Fire Edge
-  Completed Dozer Line

National Forest System Roads

Operational Maintenance Level

-  1 - BASIC CUSTODIAL CARE (CLOSED)
-  2 - HIGH CLEARANCE VEHICLES
-  3 - SUITABLE FOR PASSENGER CARS
-  Division Break Lines

