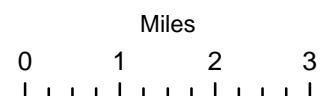


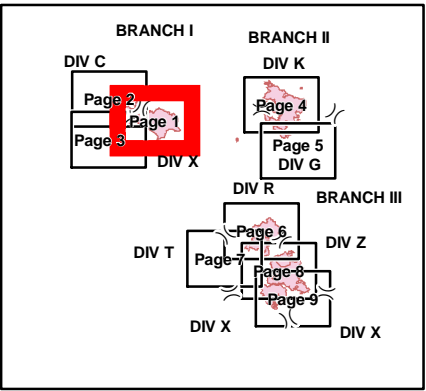
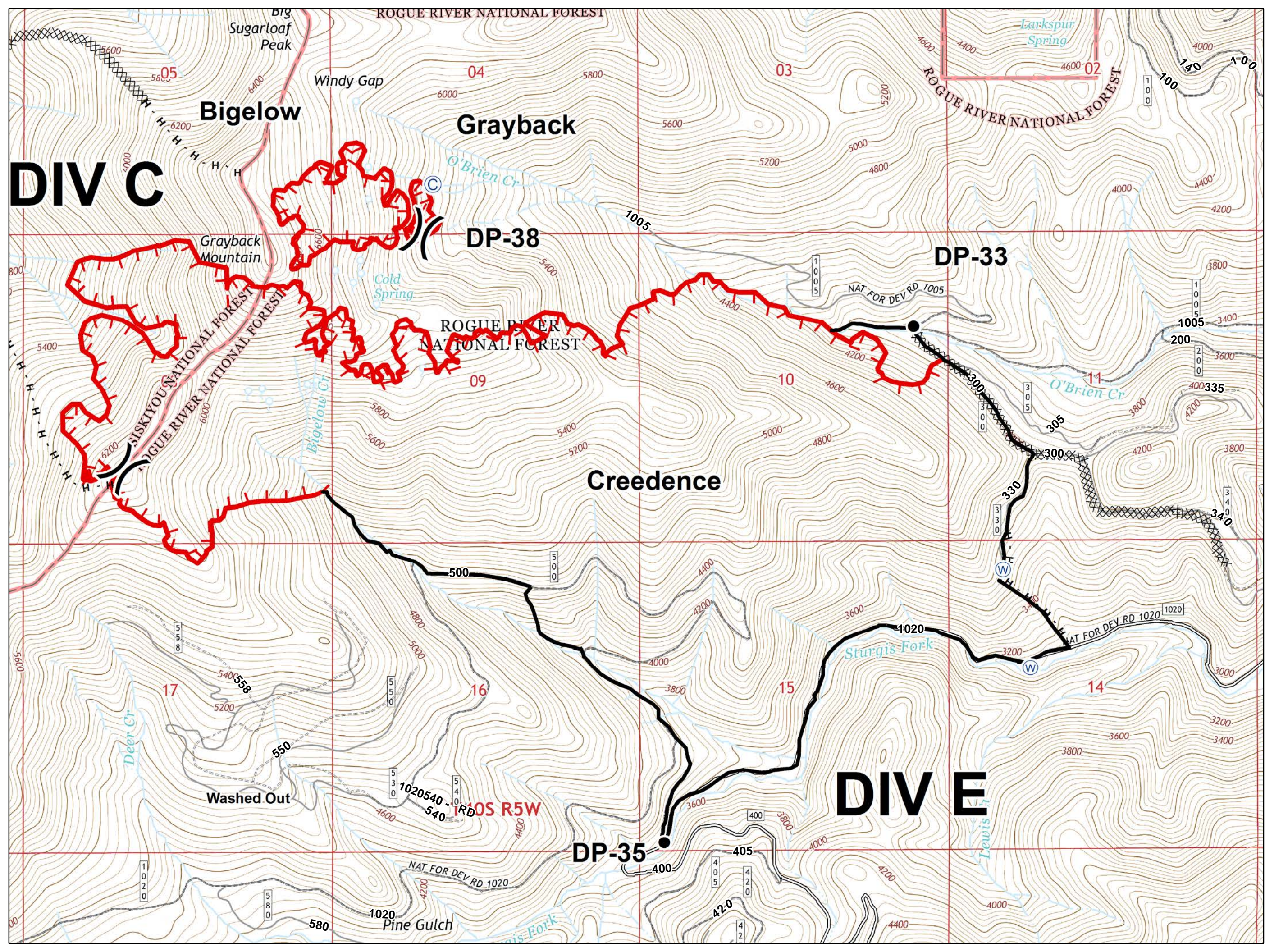
- Fire Location, Active
- Fire Location, Contained
- Camp
- Dip Site
- Drop Point
- Gate
- Helispot
- Repeater
- Water Source
- Division Break
- Uncontrolled Fire Edge
- Completed Line
- Completed Dozer Line
- Completed Hand Line
- Road as Completed Line
- Administrative Forest Boundary
- NHD Water Boundaries
- Rivers



- Camp
- Drop Point
- Water Source
- Division Break
- Uncontrolled Fire Edge
- Completed Line
- Completed Dozer Line
- Completed Hand Line
- High Clearance Vehicles
- Improved Roads







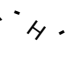
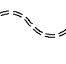


DIV C

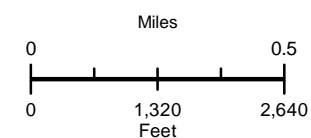
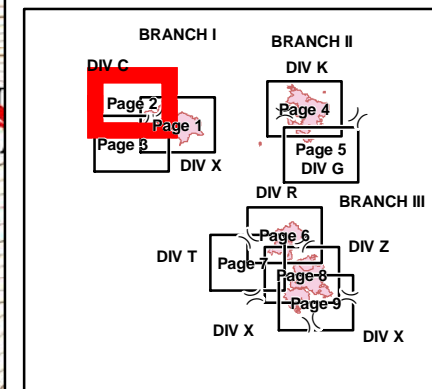
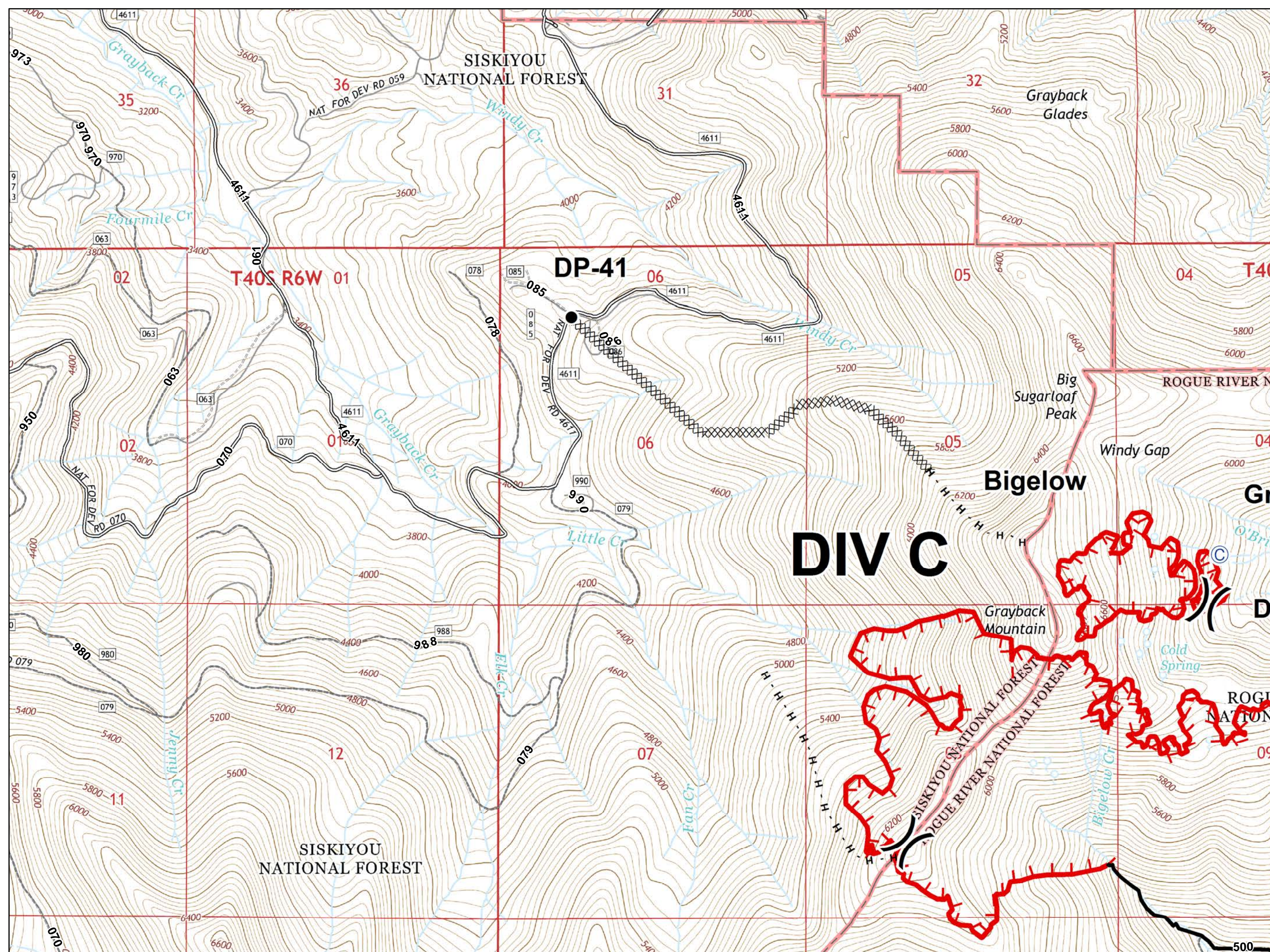
DIV E






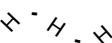



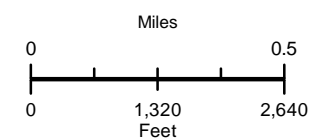
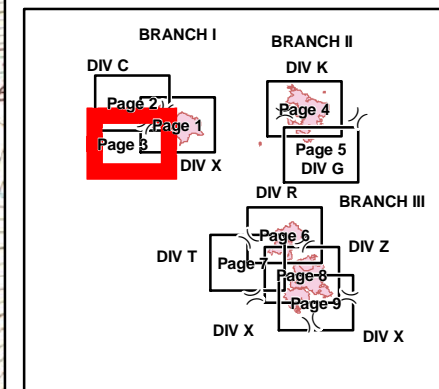
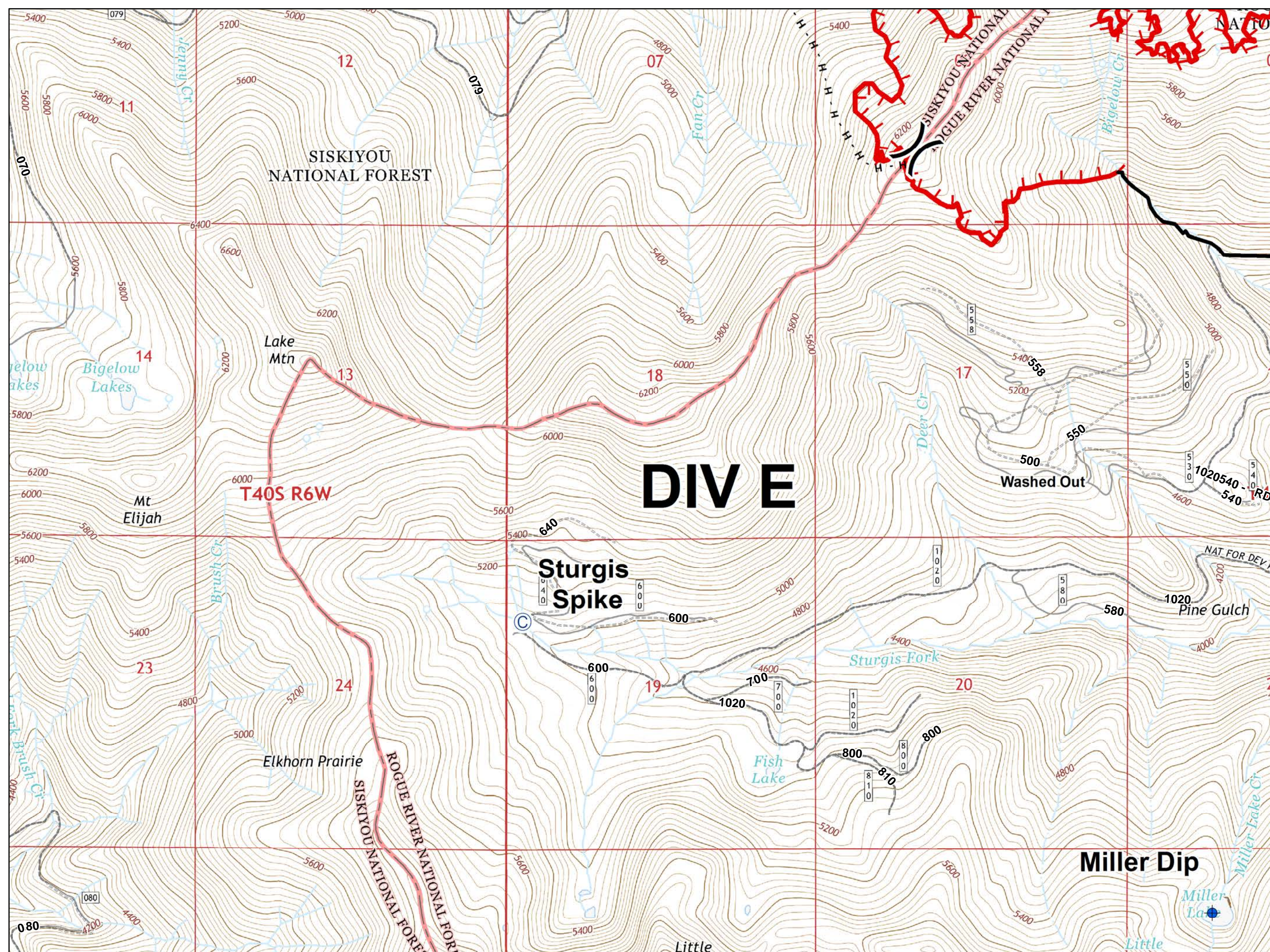
Miles 0 0.5
Feet 0 1,320 2,640

A north arrow pointing upwards and the logo for the Oregon Department of Forestry, which includes a tree and the text 'OREGON DEPARTMENT OF FORESTRY' and 'WILDFIRE MANAGEMENT'.

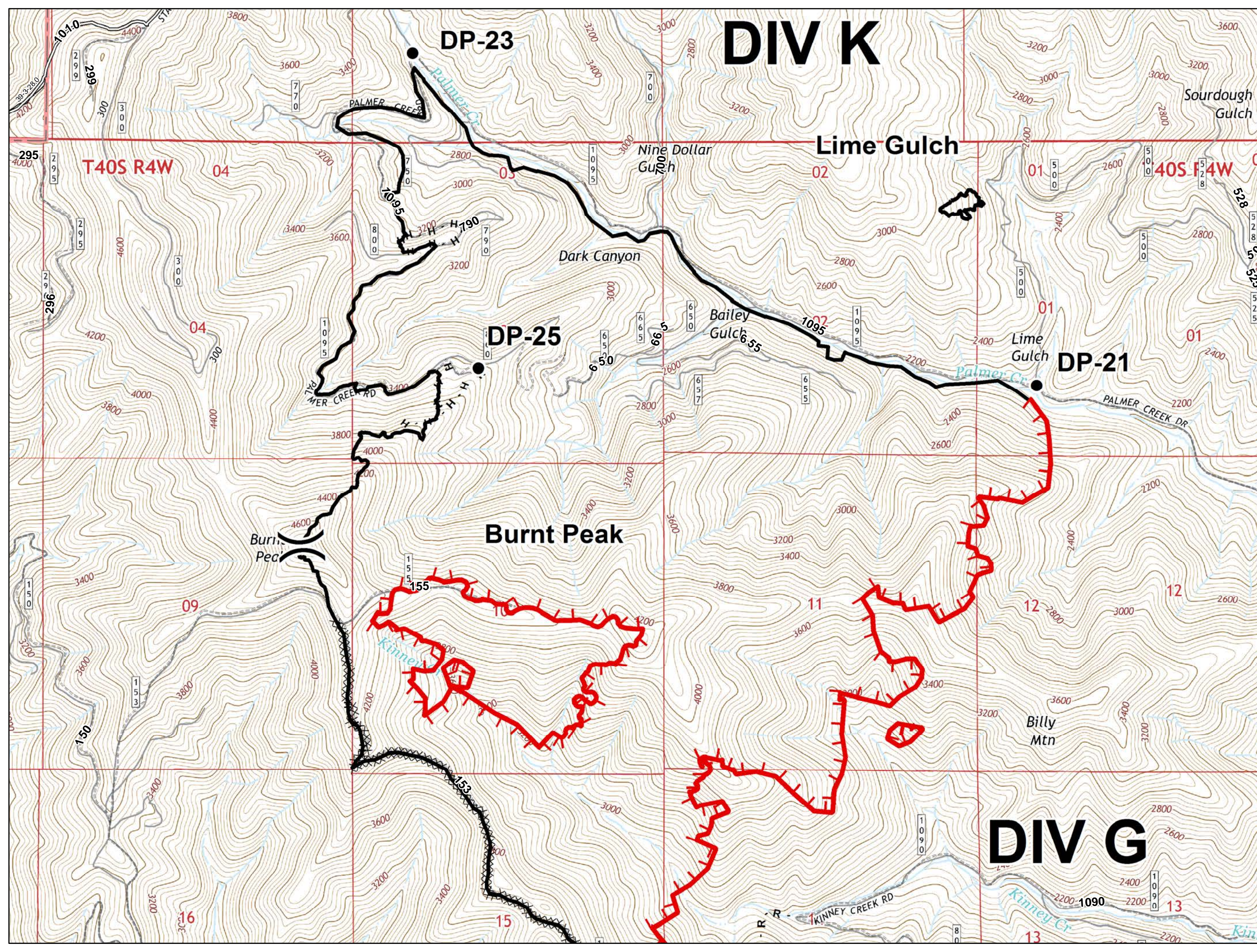
-  Camp
-  Drop Point
-  Division Break
-  Uncontrolled Fire Edge
-  Completed Line
-  Completed Dozer Line
-  Completed Hand Line
-  High Clearance Vehicles
-  Improved Roads
-  Bureau of Land Management; Private; Other Agency - Includes city, county, state, and federal agencies (including the Federal Highway Administration)


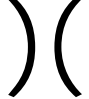



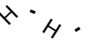
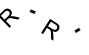
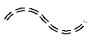




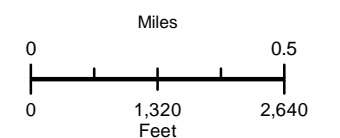
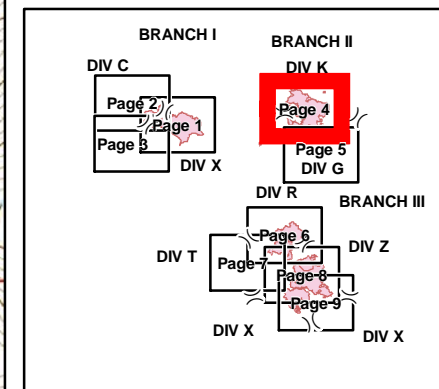
-  Camp
-  Dip Site
-  Division Break
-  Uncontrolled Fire Edge
-  Completed Line
-  Completed Hand Line
-  High Clearance Vehicles



DIV K

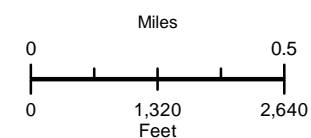
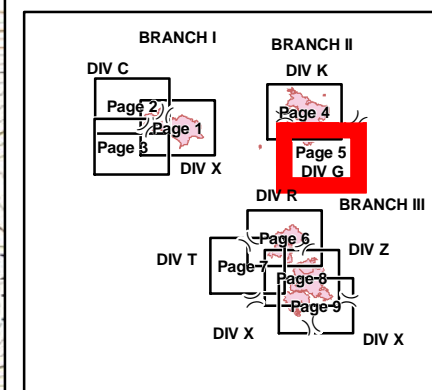
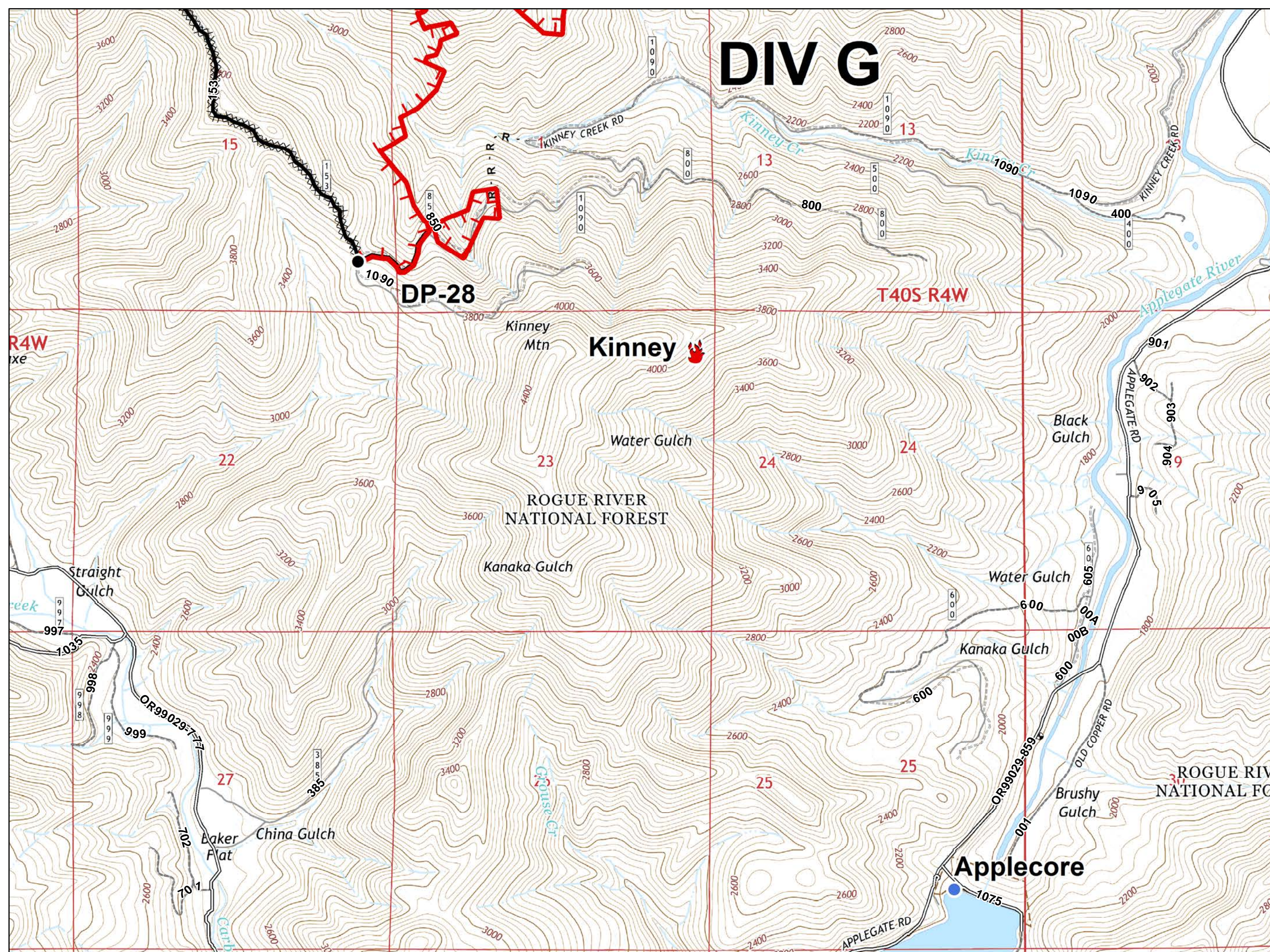


-  Drop Point
-  Division Break
-  Uncontrolled Fire Edge
-  Completed Line
-  Completed Dozer Line
-  Completed Hand Line
-  Road as Completed Line
-  High Clearance Vehicles
-  Improved Roads
-  Bureau of Land Management; Private; Other Agency - Includes city, county, state, and federal agencies (including the Federal Highway Administration)

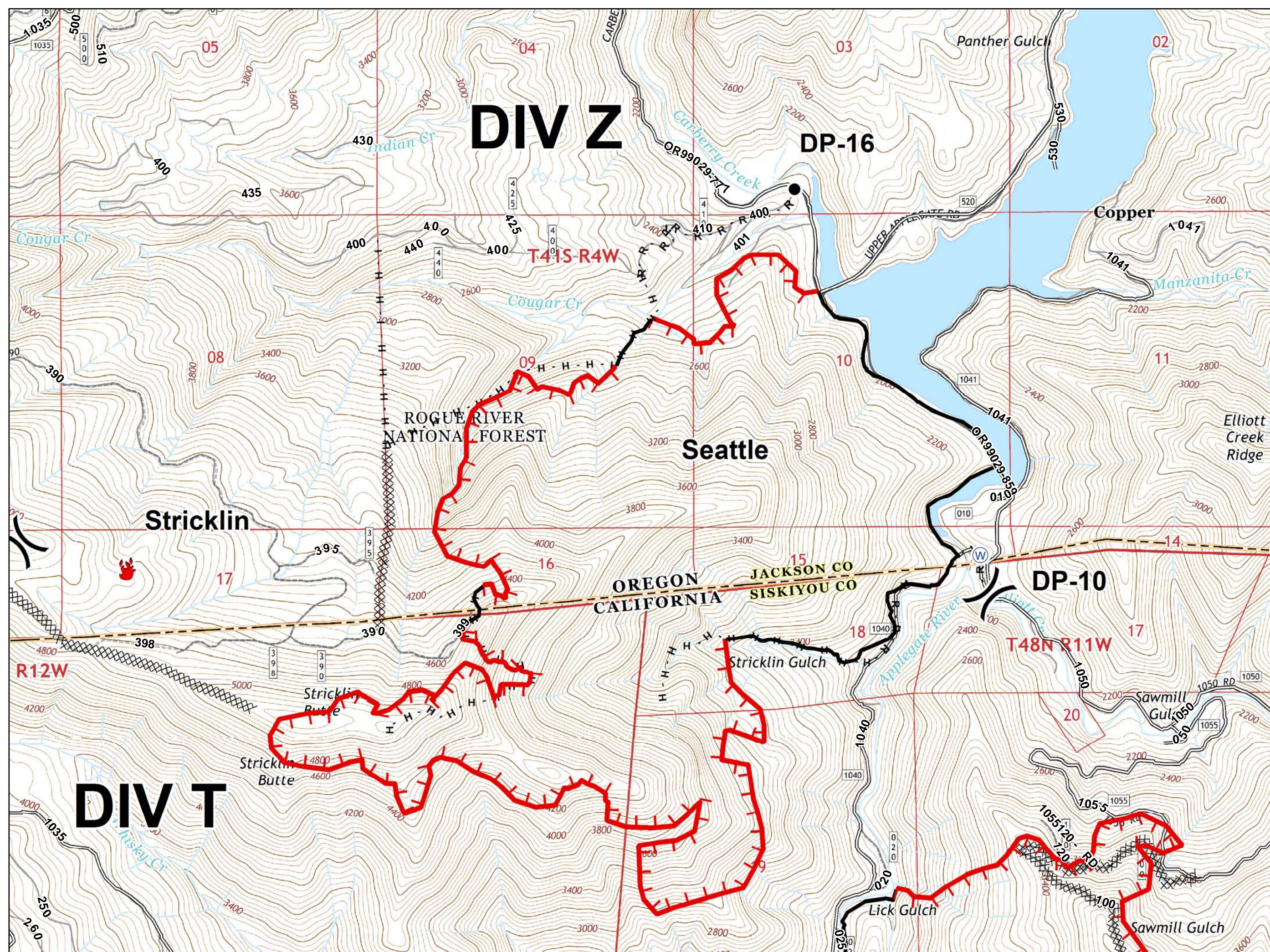
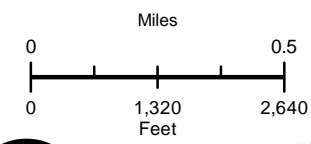
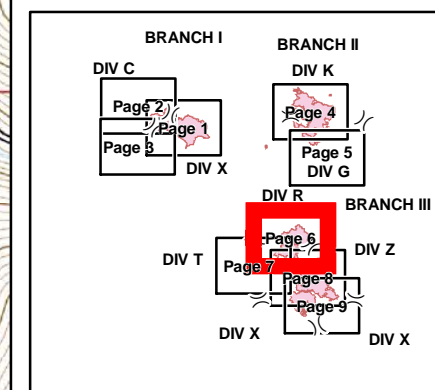


- Drop Point
- 🔥 Fire Location
- Helispot
- 🔴 Uncontrolled Fire Edge
- ⤵ Completed Line
- ⚡ Completed Dozer Line
- R-R-R Road as Completed Line
- ⋯ High Clearance Vehicles
- ⤵ Improved Roads

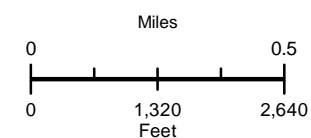
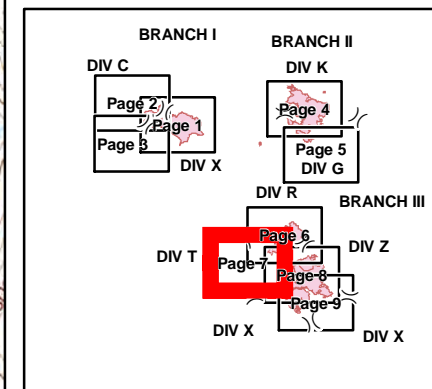
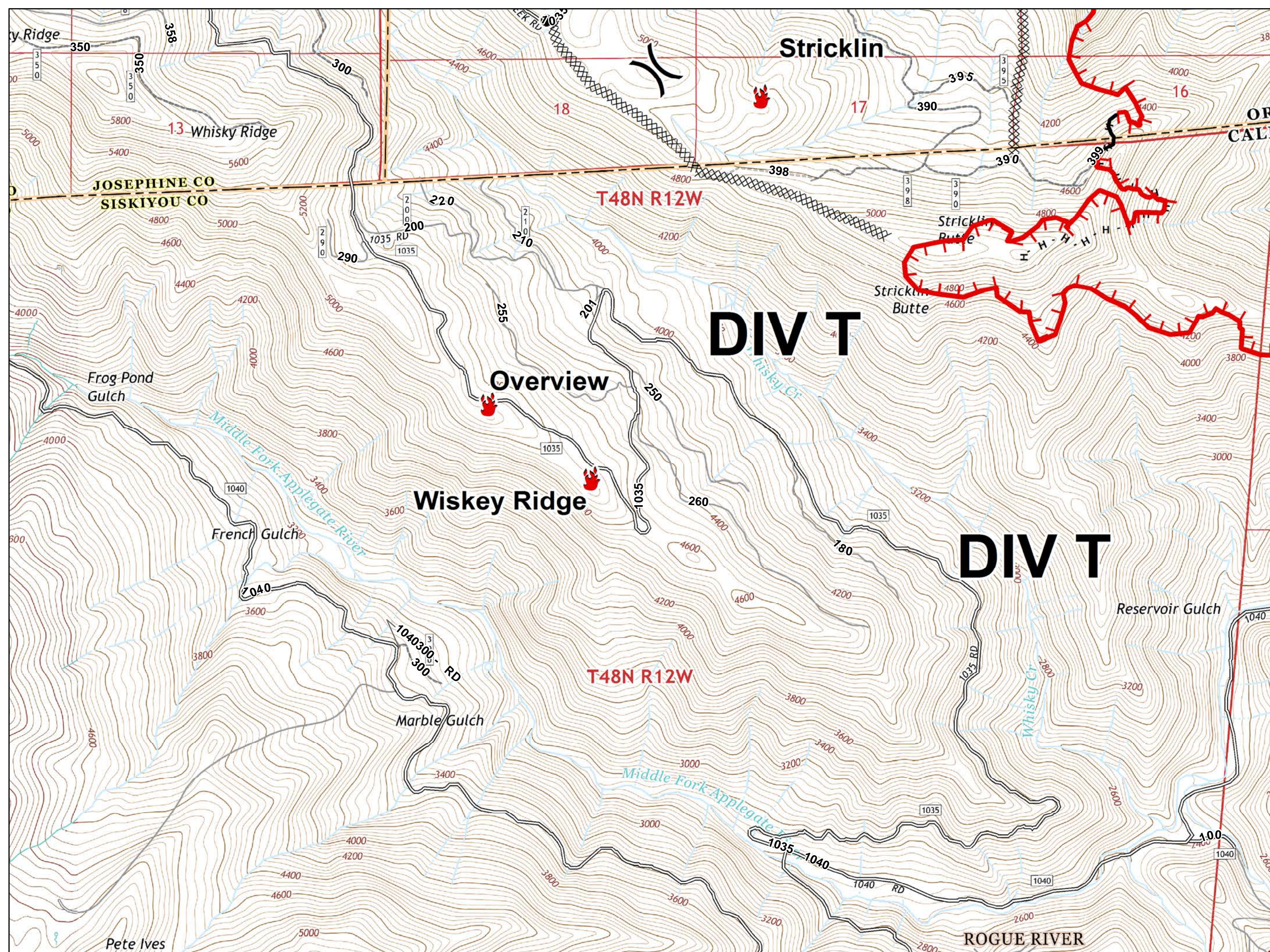
DIV G




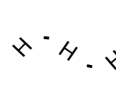
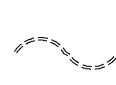



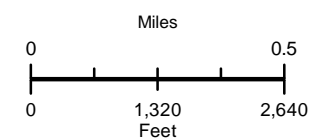
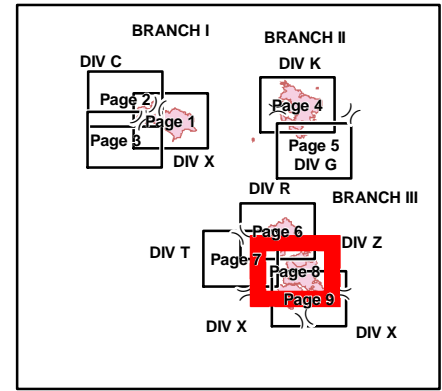
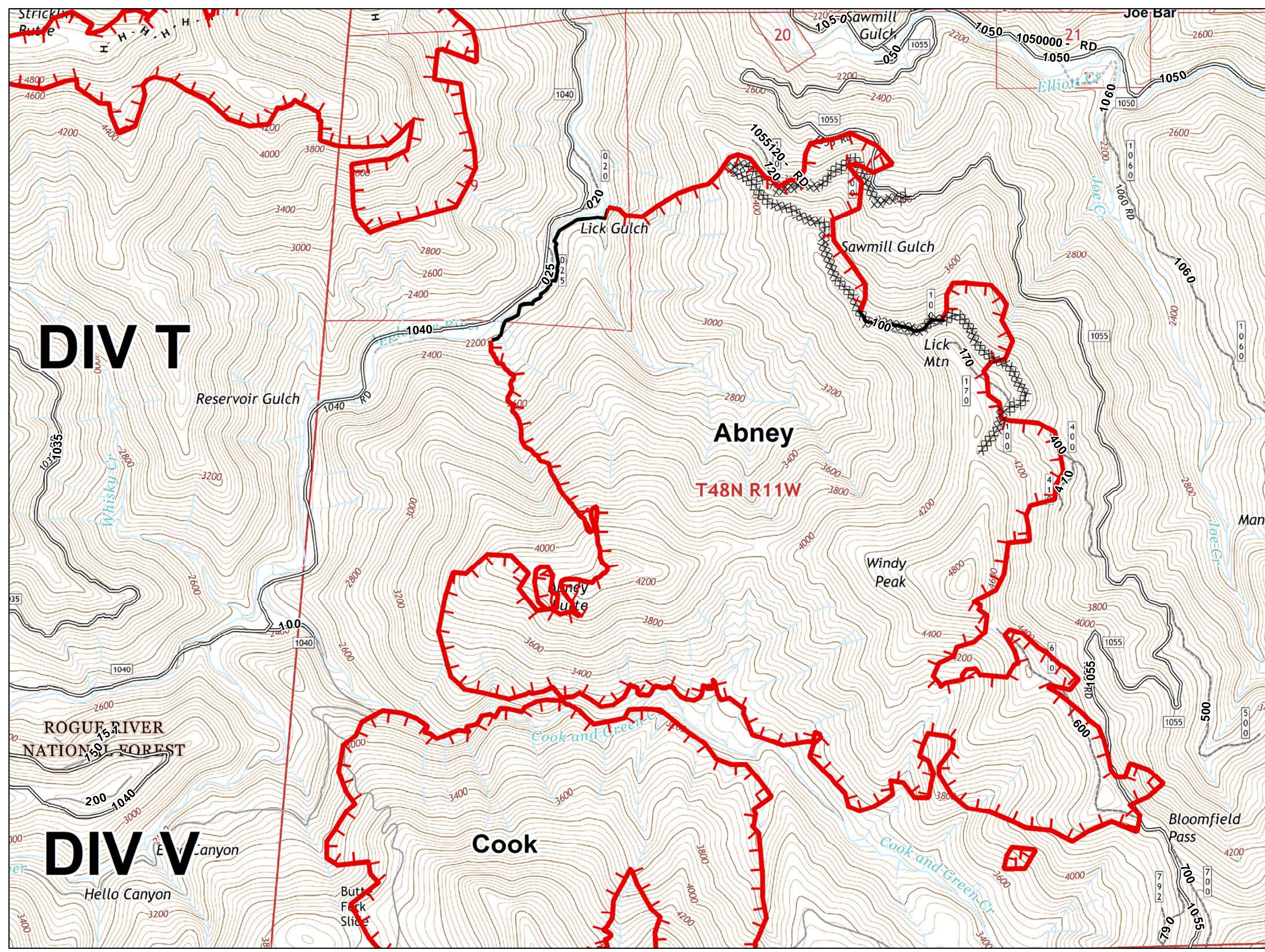
- Drop Point
- 🔥 Fire Location
- Ⓜ Water Source
-) (Division Break
- 🔴 Uncontrolled Fire Edge
- ⚫ Completed Line
- ⊗ Completed Dozer Line
- - - Completed Hand Line
- R - R - R Road as Completed Line
- - - High Clearance Vehicles
- ⤵ Improved Roads



- Drop Point
- 🔥 Fire Location
-) (Division Break
- 🔴 Uncontrolled Fire Edge
- ⤵ Completed Line
- ⊗ Completed Dozer Line
- H-H-H Completed Hand Line
- ⋯ High Clearance Vehicles
- ⤵ Improved Roads



-  Uncontrolled Fire Edge
-  Completed Line
-  Completed Dozer Line
-  Completed Hand Line
-  High Clearance Vehicles
-  Improved Roads



DIV T

DIV V

Abney

Cook

ROGUE RIVER NATIONAL FOREST

Reservoir Gulch

Lick Gulch

Sawmill Gulch

Lick Mtn

Windy Peak

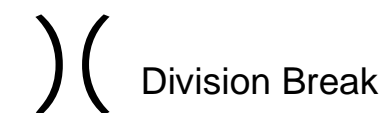
Cook and Green Cr

Bloomfield Pass

Hello Canyon

Butt Fork Slide

T48N R11W



Division Break



Uncontrolled
Fire Edge



High Clearance
Vehicles



Improved
Roads

