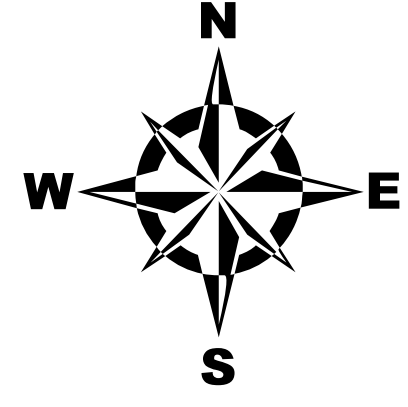
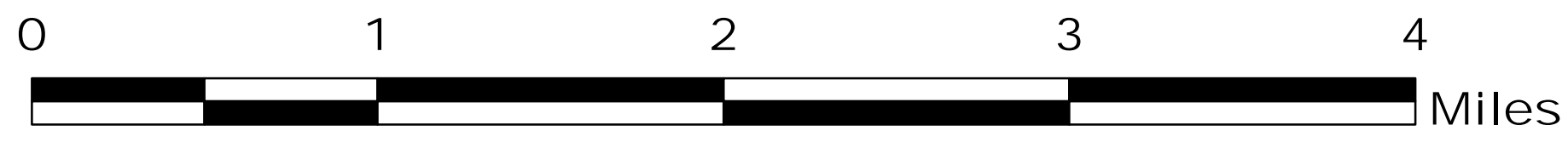
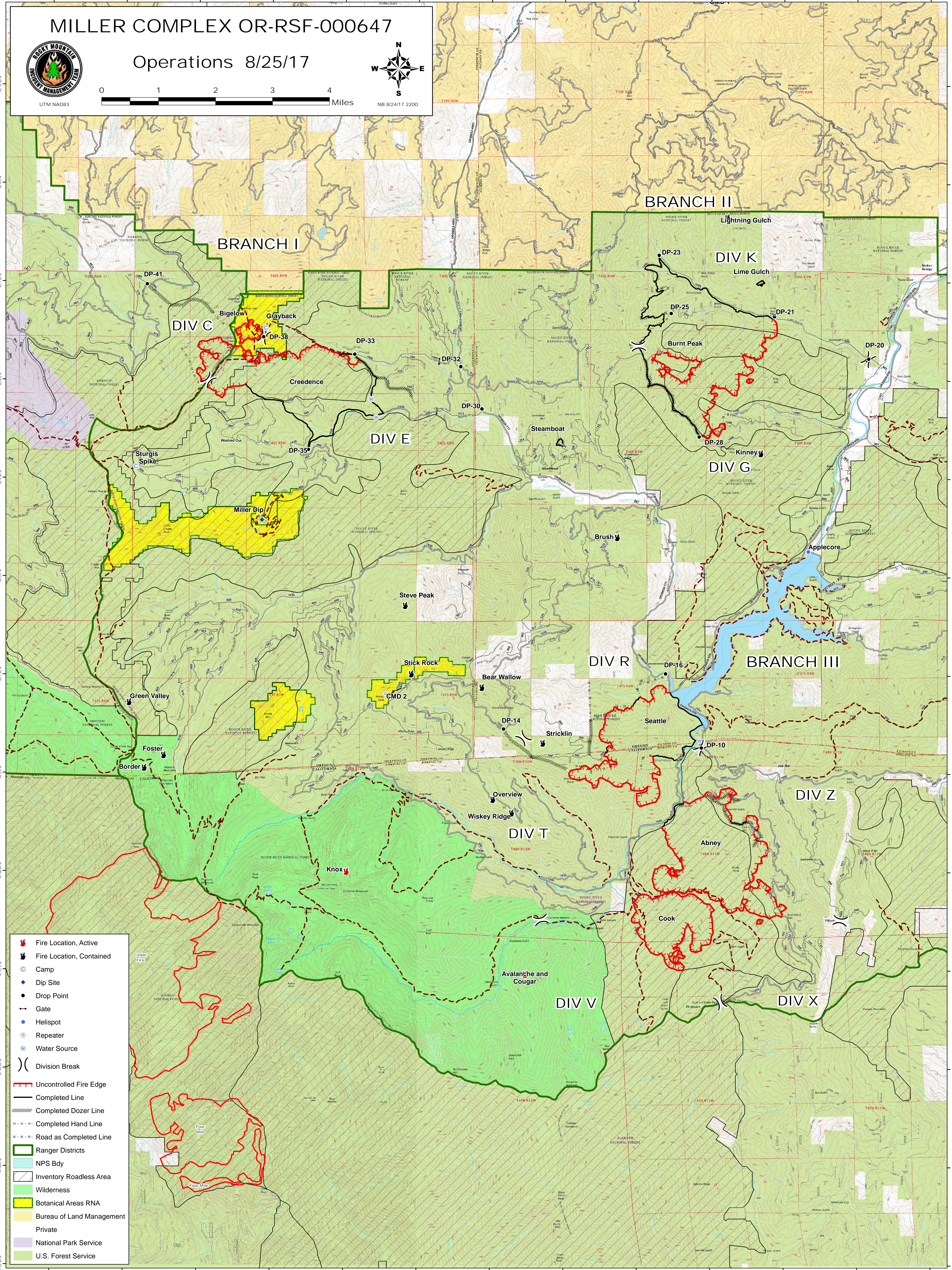


MILLER COMPLEX OR-RSF-000647

Operations 8/25/17



NB 8/24/17 2200



- Fire Location, Active
- Fire Location, Contained
- Camp
- Dip Site
- Drop Point
- Gate
- Helispot
- Repeater
- Water Source
- Division Break
- Uncontrolled Fire Edge
- Completed Line
- Completed Dozer Line
- Completed Hand Line
- Road as Completed Line
- Ranger Districts
- NPS Bdy
- Inventory Roadless Area
- Wilderness
- Botanical Areas RNA
- Bureau of Land Management
- Private
- National Park Service
- U.S. Forest Service