

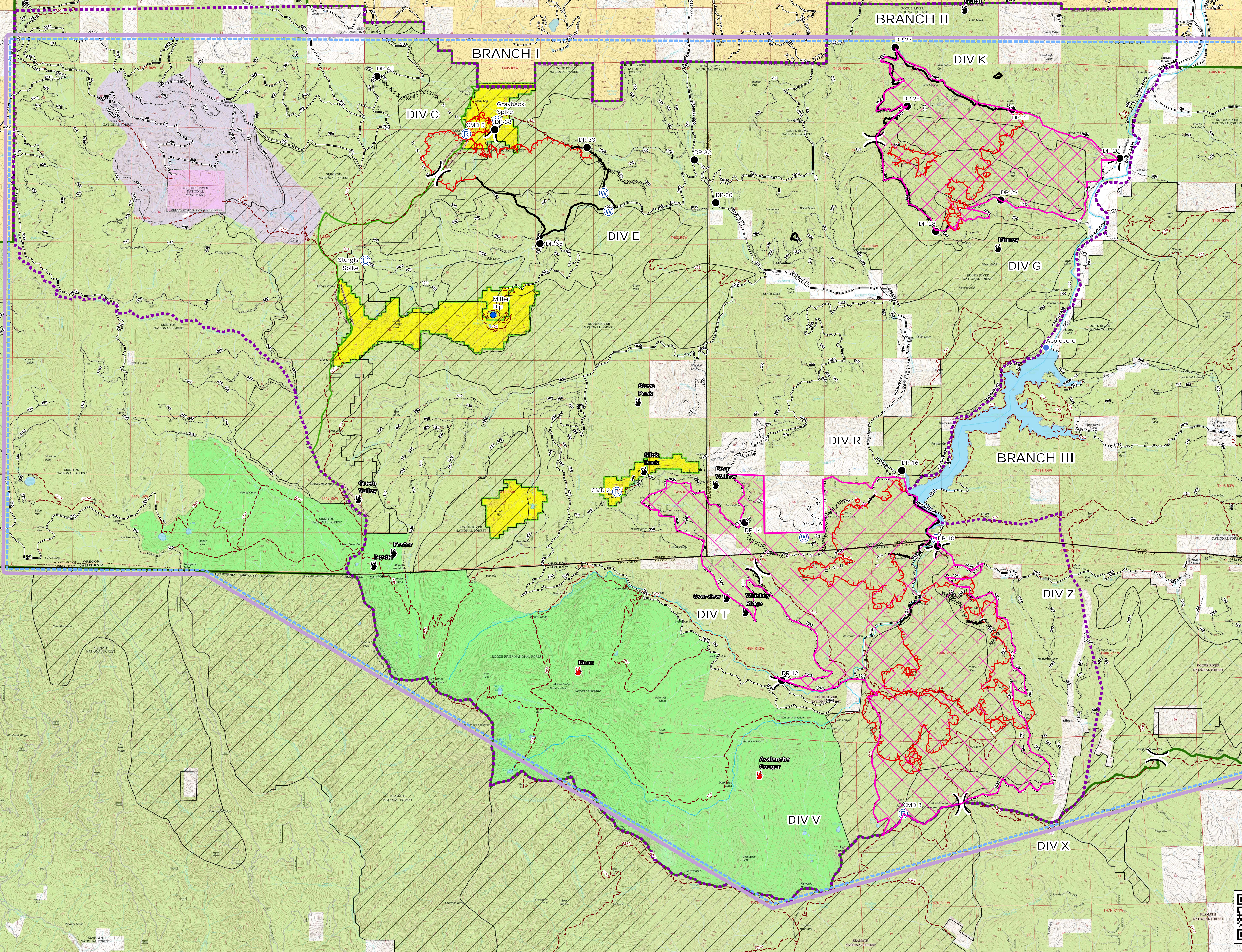
MILLER COMPLEX OR-RSF-000647



Fire Closure Area 8/27/17



| Incident Name | Acres |
|--------------------|-------|
| Bigelow | 59 |
| Creedence | 1,880 |
| Steamboat | 6 |
| Burnt Peak | 2,370 |
| Lime Gulch | 4 |
| Seattle | 1,485 |
| Abney | 2,092 |
| Cook | 840 |
| as of 8/26/17 0053 | 8,736 |



- Closure Area
- Fire Location, Active
- Fire Location, Contained
- Camp
- Dip Site
- Drop Point
- Gate
- Helispot
- Repeater
- Water Source
- Division Break
- Uncontrolled Fire Edge
- Completed Line
- Completed Dozer Line
- Completed Hand Line
- Road as Completed Line
- IA Responsibility
- Trails
- County
- Ranger Districts
- Inventory Roadless Area
- Wilderness
- Botanical Areas RNA
- Bureau of Land Management
- Private
- National Park Service
- U.S. Forest Service

