

MILLER COMPLEX OR-RSF-000647

Operations Map 8/27/17

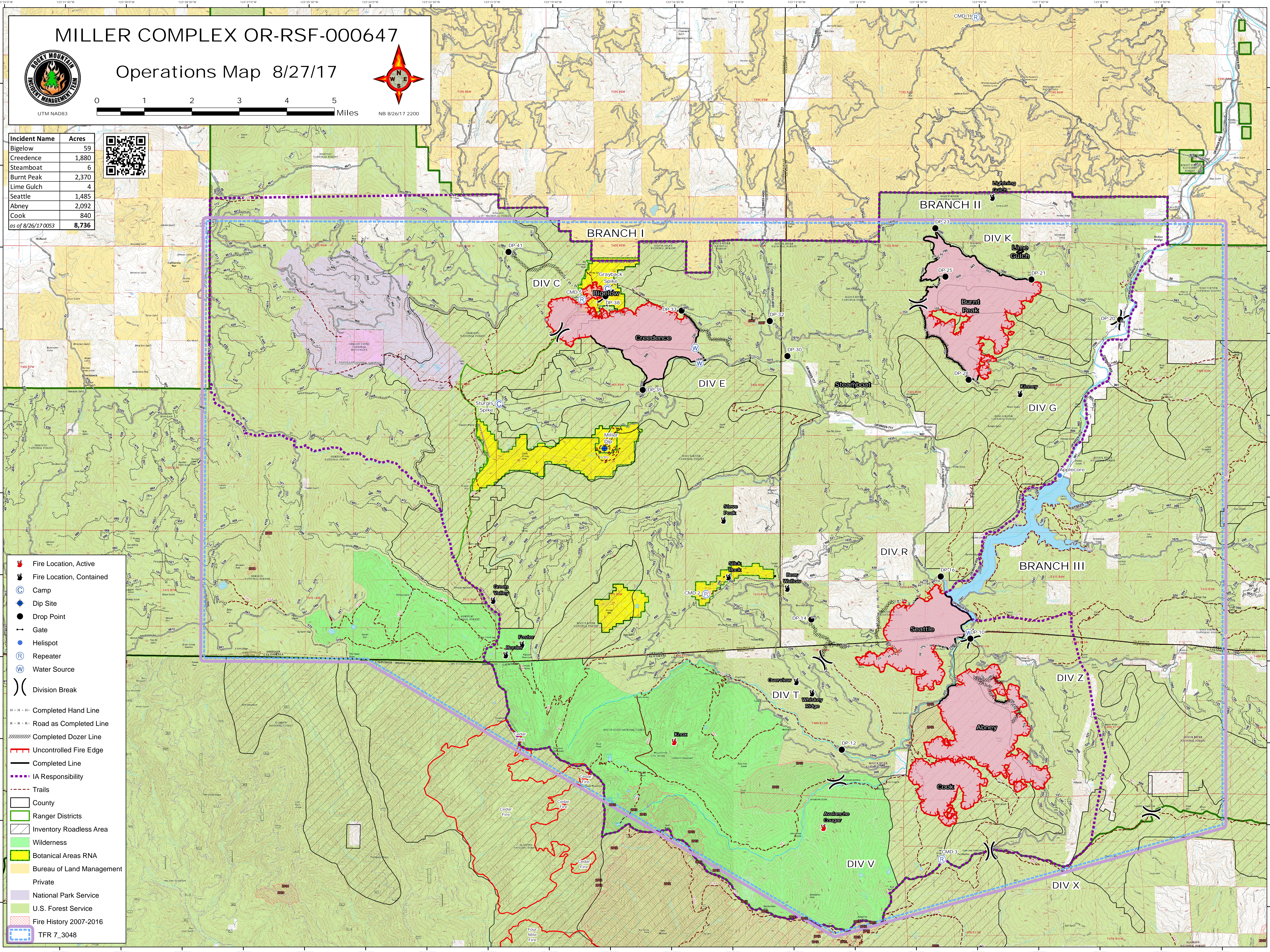


UTM NAD83



NB 8/26/17 2200

Incident Name	Acres
Bigelow	59
Creedence	1,880
Steamboat	6
Burnt Peak	2,370
Lime Gulch	4
Seattle	1,485
Abney	2,092
Cook	840
as of 8/26/17 0053	8,736



- Fire Location, Active
- Fire Location, Contained
- Camp
- Dip Site
- Drop Point
- Gate
- Helispot
- Repeater
- Water Source
- Division Break
- Completed Hand Line
- Road as Completed Line
- Completed Dozer Line
- Uncontrolled Fire Edge
- Completed Line
- IA Responsibility
- Trails
- County
- Ranger Districts
- Inventory Roadless Area
- Wilderness
- Botanical Areas RNA
- Bureau of Land Management
- Private
- National Park Service
- U.S. Forest Service
- Fire History 2007-2016
- TFR 7_3048