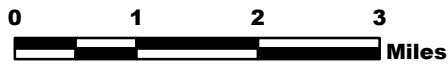


# MILLER COMPLEX OR-RSF-000647

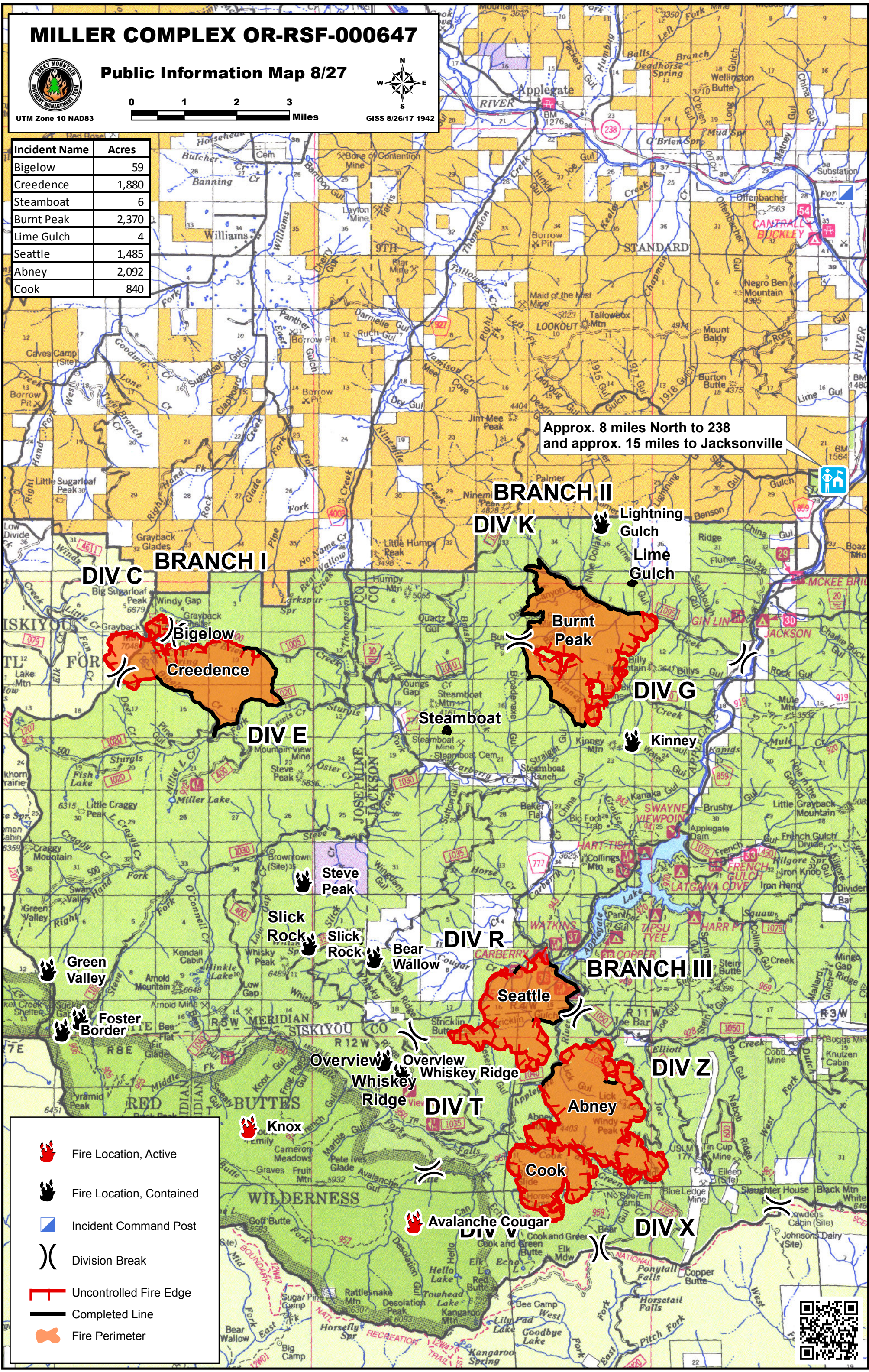


Public Information Map 8/27



UTM Zone 10 NAD83 GISS 8/26/17 1942

Incident Name	Acres
Bigelow	59
Creedence	1,880
Steamboat	6
Burnt Peak	2,370
Lime Gulch	4
Seattle	1,485
Abney	2,092
Cook	840



Approx. 8 miles North to 238 and approx. 15 miles to Jacksonville

- Fire Location, Active
- Fire Location, Contained
- Incident Command Post
- Division Break
- Uncontrolled Fire Edge
- Completed Line
- Fire Perimeter

