

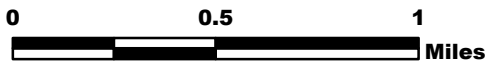
MILLER COMPLEX OR-RSF-000647

Public Information Map 8/27

Branch II



UTM Zone 10 NAD83

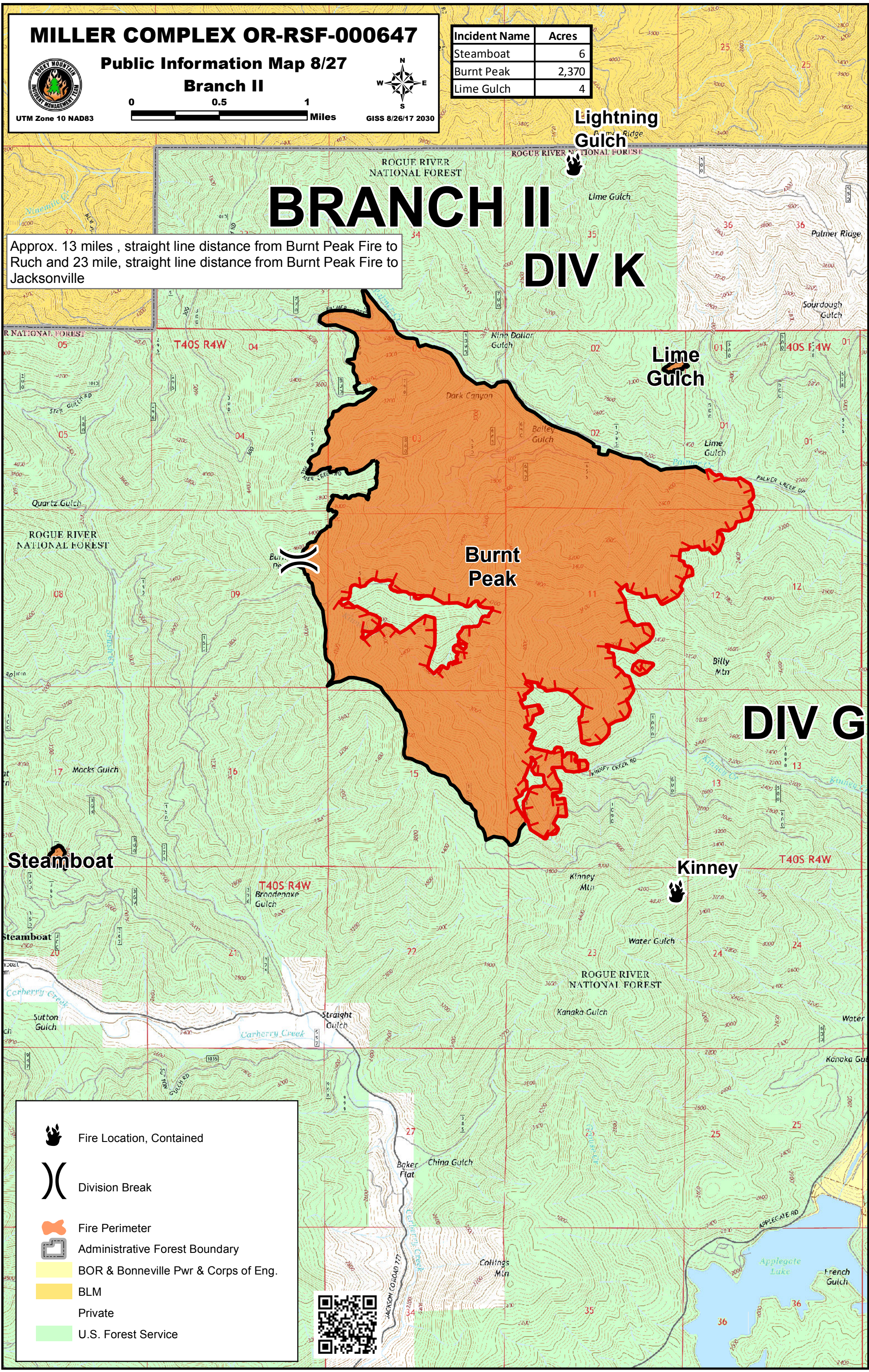


GISS 8/26/17 2030

Incident Name	Acres
Steamboat	6
Burnt Peak	2,370
Lime Gulch	4

BRANCH II DIV K

Approx. 13 miles, straight line distance from Burnt Peak Fire to Ruch and 23 mile, straight line distance from Burnt Peak Fire to Jacksonville



Steamboat

Burnt Peak

Lime Gulch

DIV G

Kinney

Fire Location, Contained

Division Break

Fire Perimeter

Administrative Forest Boundary

BOR & Bonneville Pwr & Corps of Eng.

BLM

Private

U.S. Forest Service

