

123°9'0"W

123°7'30"W

123°6'0"W

123°4'30"W

123°3'0"W

MILLER COMPLEX OR-RSF-000647

Branch III East OPS 8/28/17



NB 8/28/17 0500

IR - 8/28/17 0149

- Isolated Heat
- Intense Heat
- Scattered Heat

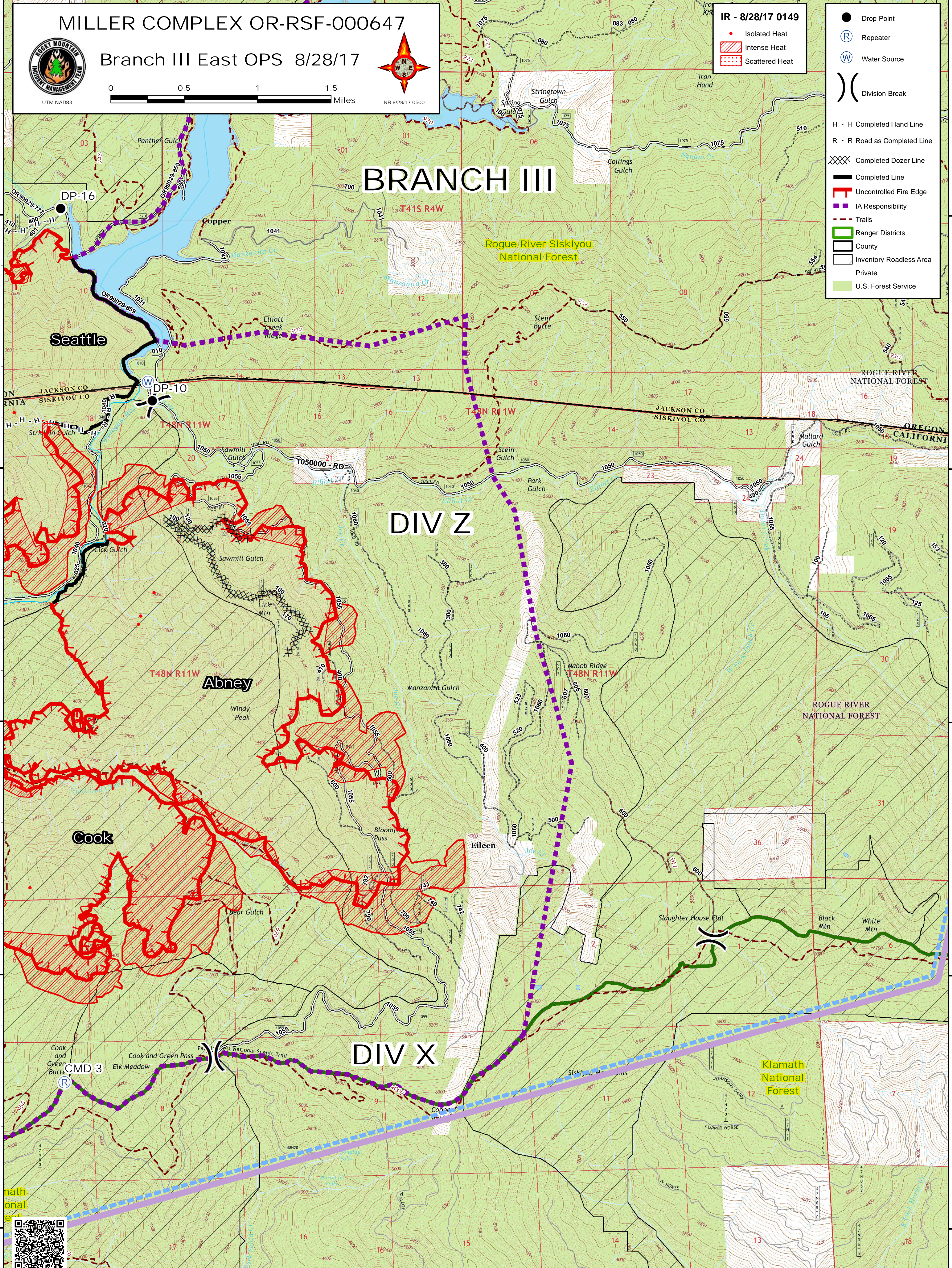
- Drop Point
- R Repeater
- W Water Source
-) Division Break

- H - H Completed Hand Line
- R - R Road as Completed Line
- Completed Dozer Line
- Completed Line
- Uncontrolled Fire Edge
- IA Responsibility
- Trails
- Ranger Districts
- County
- Inventory Roadless Area
- Private
- U.S. Forest Service

BRANCH III

DIV Z

DIV X



42°1'30"N
42°0'0"N
41°58'30"N
41°57'0"N
41°55'30"N

42°1'30"N
42°0'0"N
41°58'30"N
41°57'0"N
41°55'30"N

123°9'0"W

123°7'30"W

123°6'0"W

123°4'30"W

123°3'0"W

