

123°9'0"W 123°7'30"W 123°6'0"W 123°4'30"W 123°3'0"W

MILLER COMPLEX OR-RSF-000647

Branch III East OPS 8/28/17



0 0.5 1 1.5 Miles



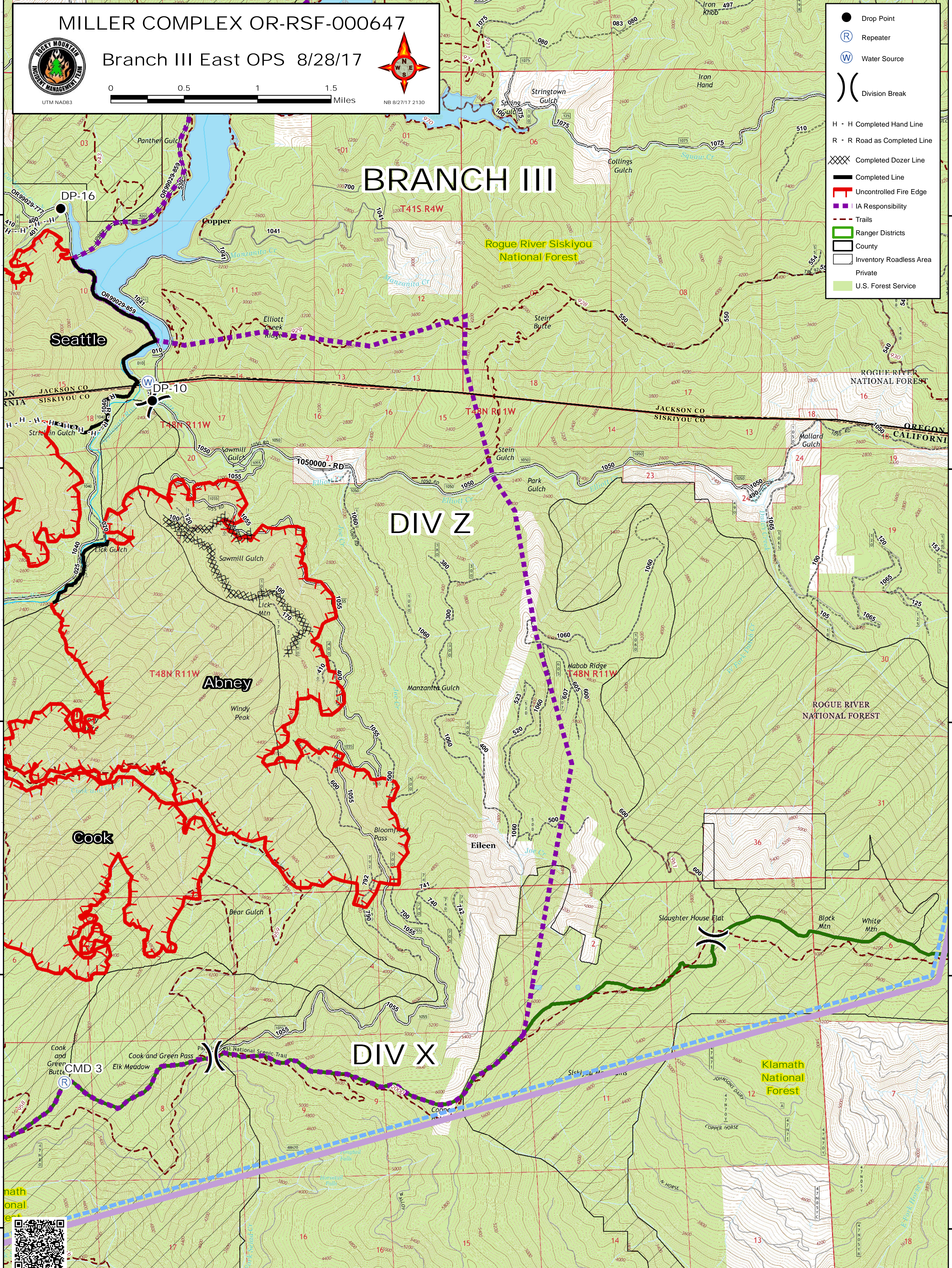
NB 8/27/17 2130

- Drop Point
- Ⓡ Repeater
- Ⓜ Water Source
- ⎓ Division Break
- H - H Completed Hand Line
- R - R Road as Completed Line
- ⊗ Completed Dozer Line
- Completed Line
- ⚡ Uncontrolled Fire Edge
- ⋯ IA Responsibility
- ⋯ Trails
- ▭ Ranger Districts
- ▭ County
- ▭ Inventory Roadless Area
- ▭ Private
- ▭ U.S. Forest Service

BRANCH III

DIV Z

DIV X



42°1'30"N
42°0'0"N
41°58'30"N
41°57'0"N
41°55'30"N

42°1'30"N
42°0'0"N
41°58'30"N
41°57'0"N
41°55'30"N

123°9'0"W 123°7'30"W 123°6'0"W 123°4'30"W 123°3'0"W

