

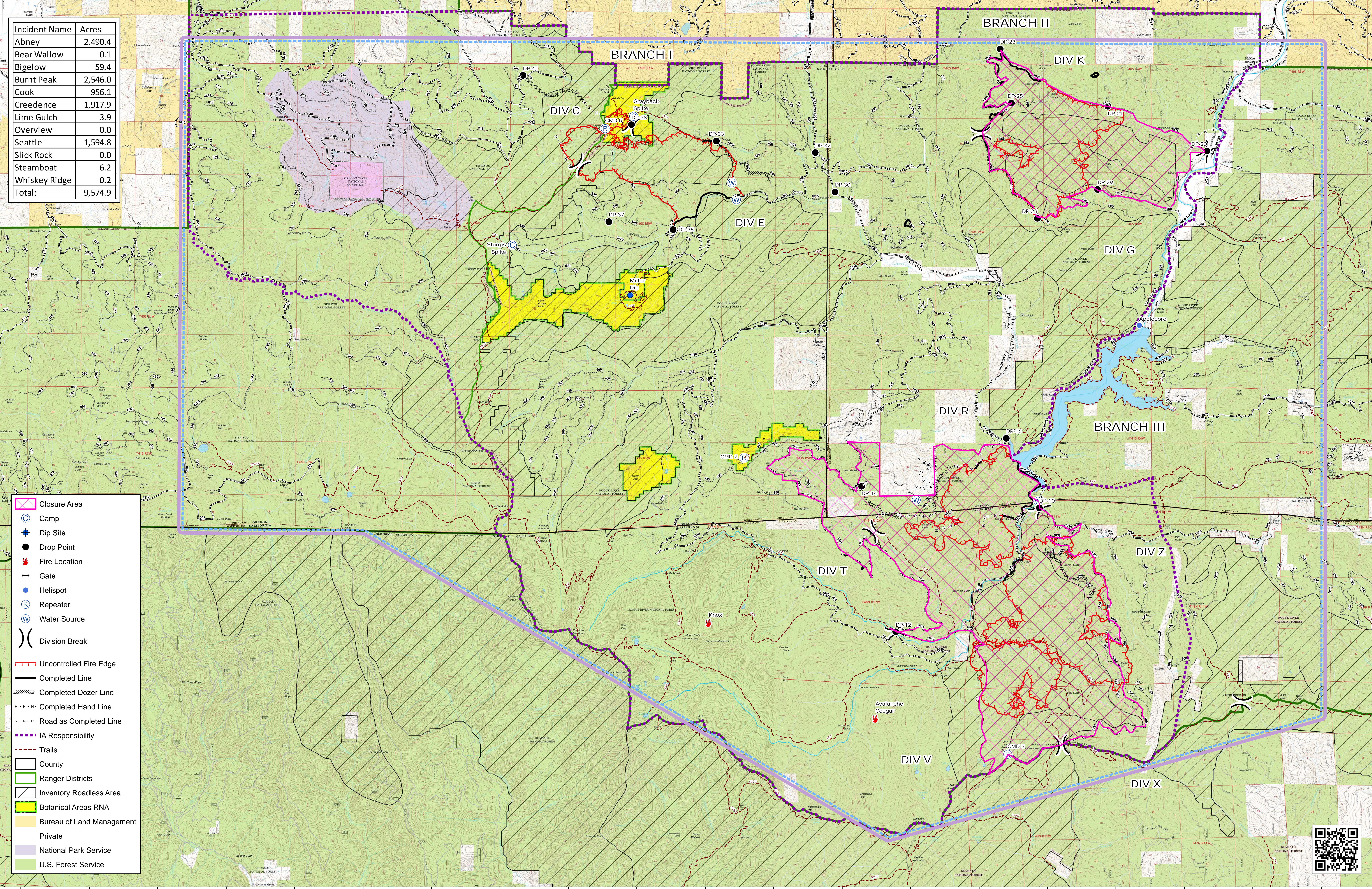
MILLER COMPLEX OR-RSF-000647



Fire Closure Area 8/28/17



Incident Name	Acres
Abney	2,490.4
Bear Wallow	0.1
Bigelow	59.4
Burnt Peak	2,546.0
Cook	956.1
Creedence	1,917.9
Lime Gulch	3.9
Overview	0.0
Seattle	1,594.8
Slick Rock	0.0
Steamboat	6.2
Whiskey Ridge	0.2
Total:	9,574.9



- Closure Area
- Camp
- Dip Site
- Drop Point
- Fire Location
- Gate
- Helispot
- Repeater
- Water Source
- Division Break
- Uncontrolled Fire Edge
- Completed Line
- Completed Dozer Line
- Completed Hand Line
- Road as Completed Line
- IA Responsibility
- Trails
- County
- Ranger Districts
- Inventory Roadless Area
- Botanical Areas RNA
- Bureau of Land Management
- Private
- National Park Service
- U.S. Forest Service

