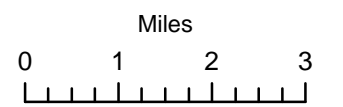


- Camp
- Dip Site
- Drop Point
- Fire Location
- Gate
- Helispot
- Repeater
- Water Source
- Division Break
- IA Responsibility
- Uncontrolled Fire Edge
- Completed Line
- Completed Dozer Line
- Completed Hand Line
- Road as Completed Line
- Administrative Forest Boundary
- NHD Water Boundaries
- Rivers
- Wilderness

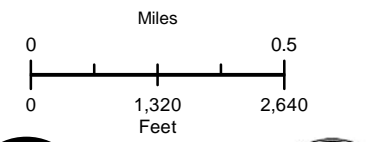
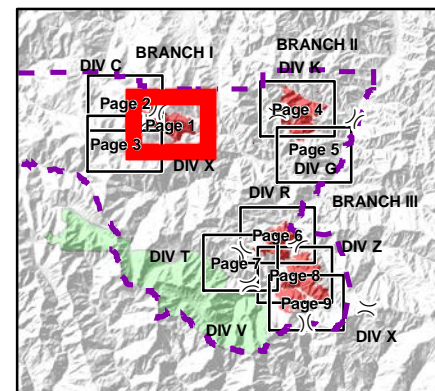


BRANCH I

Miller Complex
OR-RSF-000647
8/28/2017

Page 1

- Ⓒ Camp
- Drop Point
- Ⓔ Repeater
- ⒲ Water Source
-) (Division Break
- 🔴 Uncontrolled Fire Edge
- ⚫ Completed Line
- ⚡ Completed Dozer Line
- H-H-H Completed Hand Line
- 👉 IA Responsibility
- ⋯ High Clearance Vehicles
- 🛣 Improved Roads



DIV C

DIV E

Bigelow

Grayback

Creedence

Washed Out

DP-37

DP-38

DP-33

DP-35

CMD 5

Grayback Mountain

Ⓔ

Ⓒ

Ⓔ

Ⓔ

Ⓔ

Ⓔ

Ⓔ

Ⓔ

Ⓔ

Ⓔ

Ⓔ

Ⓔ

Ⓔ

Ⓔ

Ⓔ

Ⓔ

Ⓔ

Ⓔ

Ⓔ

Ⓔ

Ⓔ

Ⓔ

Ⓔ

Ⓔ

Ⓔ

1005

1005

1005

1005

1005

1005

1005

1005

1005

1005

1005

1005

1005

1005

1005

1005

1005

1005

1005

1005

1005

1005

1005

1005

1005

1005

1005

1005

1005

1005

1005

1005

1005

1005

1005

1005

1005

1005

1005

1005

1005

1005

1005

1005

1005

1005

1005

1005

1005

1005

1005

1005

1005

1005

1005

1005

1005

1005

1005

1005

1005

1005

1005

1005

1005

1005

1005

1005

1005

1005

1005

1005

1005

1005

1005

1005

1005

1005

1005

1005

1005

1005

1005

1005

1005

1005

1005

1005

1005

1005

1005

1005

1005

1005

1005

1005

1005

1005

1005

1005

1005

1005

1005

1005

1005

1005

1005

1005

1005

1005

1005

1005

1005

1005

1005

1005

1005

1005

1005

1005

1005

1005

1005

1005

1005

1005

1005

1005

1005

1005

1005

1005

1005

1005

1005

1005

1005

1005

1005

1005

1005

1005

1005

1005

1005

1005

1005

1005

1005

1005

1005

1005

1005

1005

1005

1005

1005

1005

1005

1005

1005

1005

1005

1005

1005

1005

1005

1005

1005

1005

1005

1005

1005

1005

1005

1005

1005

1005

1005

1005

1005

1005

1005

1005

1005

1005

1005

1005

1005

1005

1005

1005

1005

1005

1005

1005

1005

1005

1005

1005

1005

1005

1005

1005

1005

1005

1005

1005

1005

1005

1005

1005

1005

1005

1005

1005

1005

1005

1005

1005

1005

1005

1005

1005

1005

1005

1005

1005

1005

1005

1005

1005

1005

1005

1005

1005

1005

1005

1005

1005

1005

1005

1005

1005

1005

1005

1005

1005

1005

1005

1005

1005

1005

1005

1005

1005

1005

1005

1005

1005

1005

1005

1005

1005

1005

1005

1005

1005

1005

1005

1005

1005

1005

1005

1005

1005

1005

1005

1005

1005




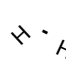

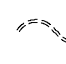


1005

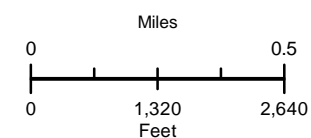
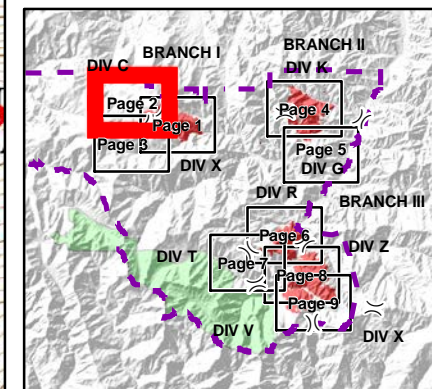
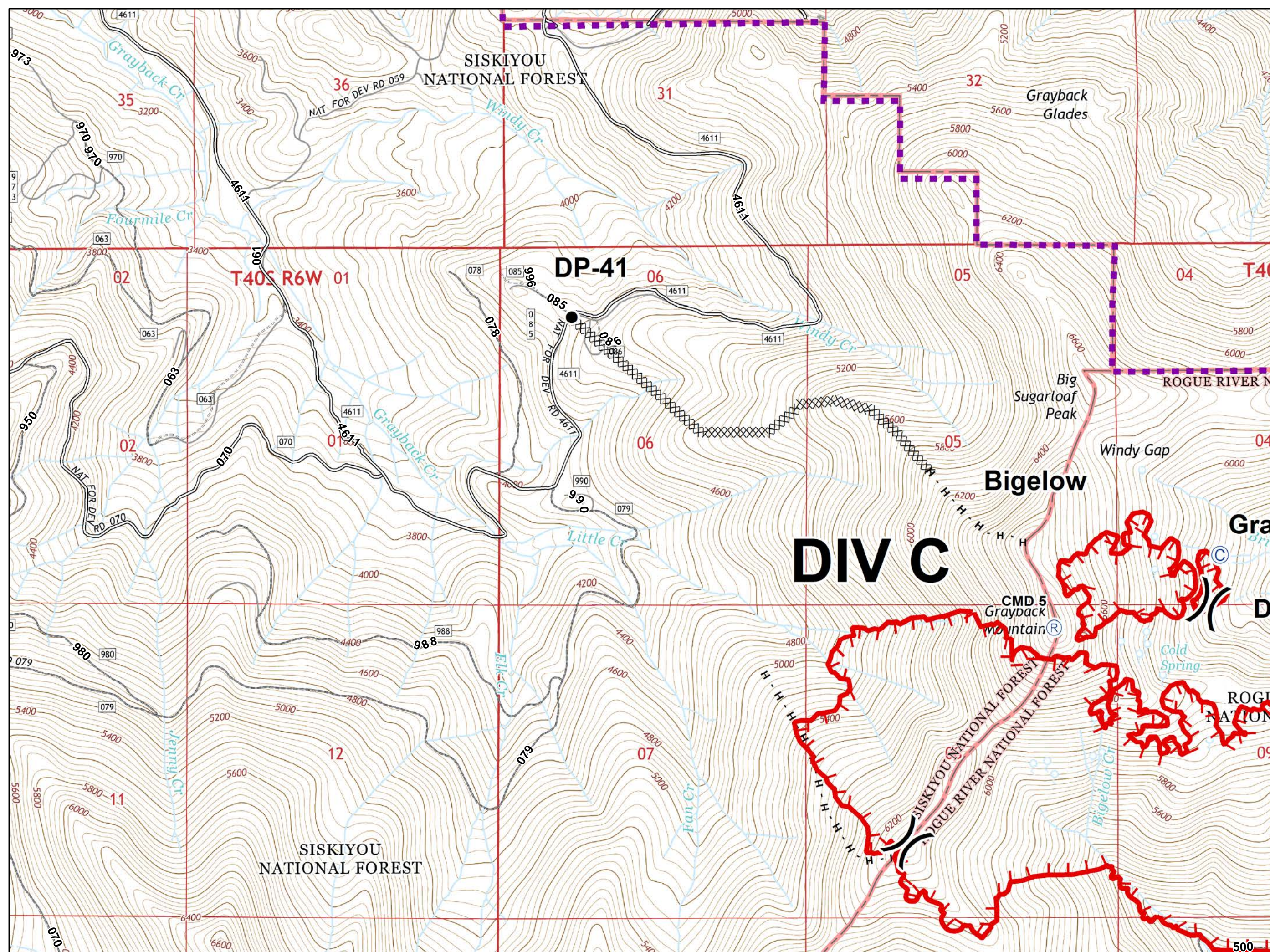
1005






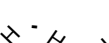
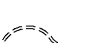
1005

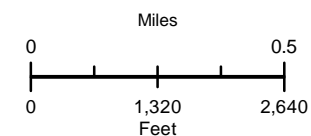
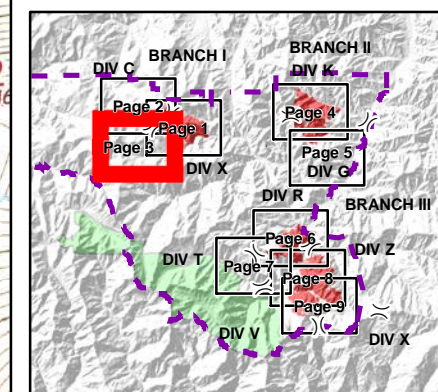
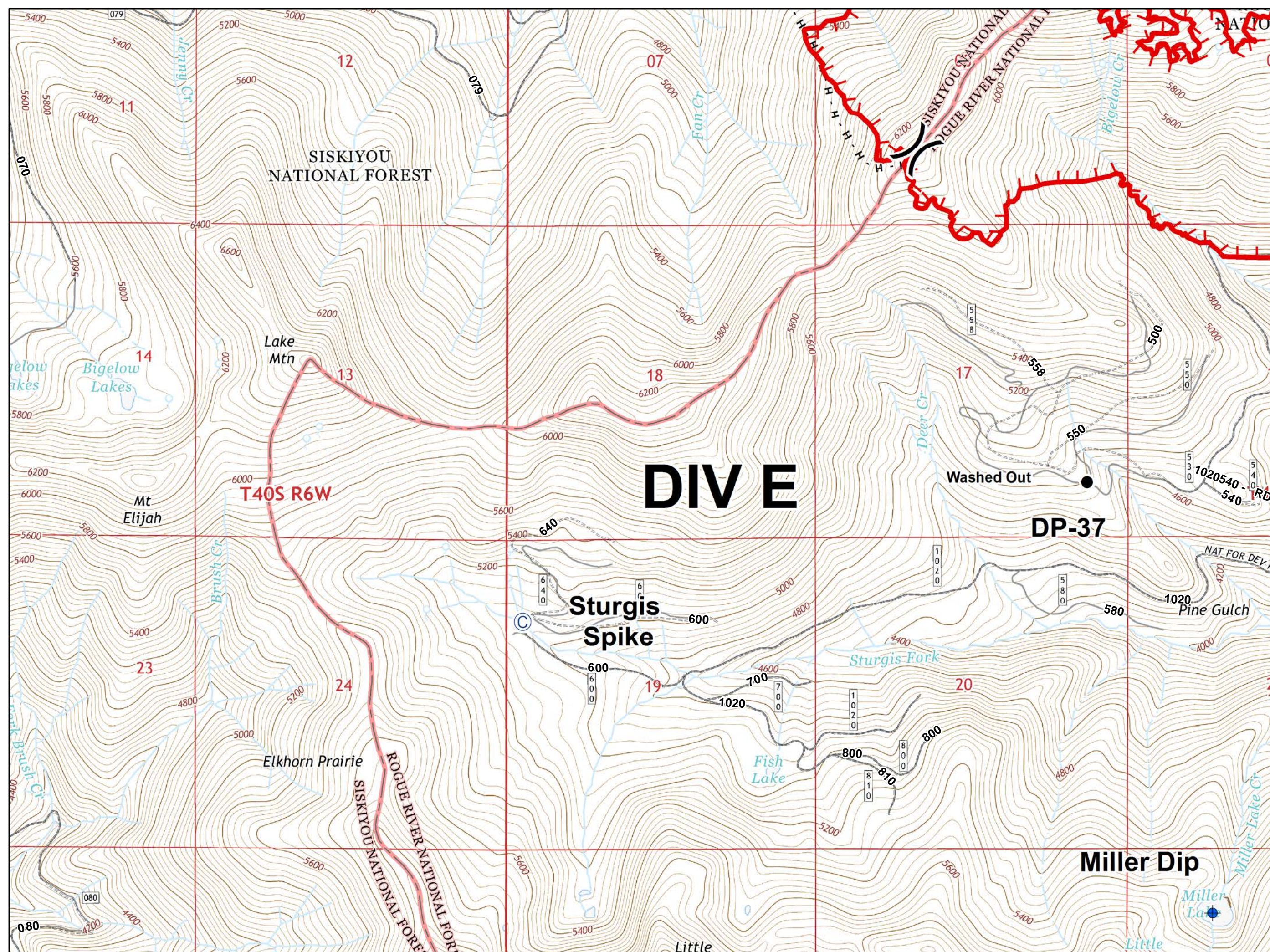
1005






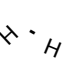
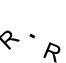

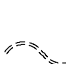


1

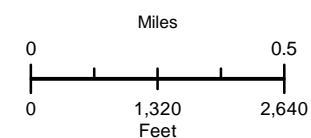
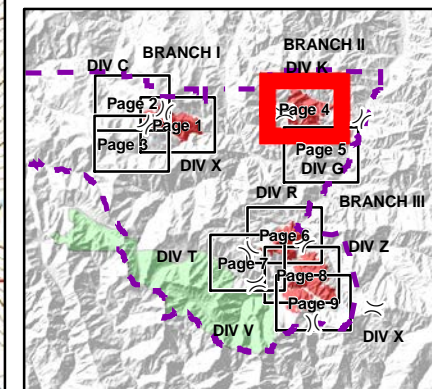
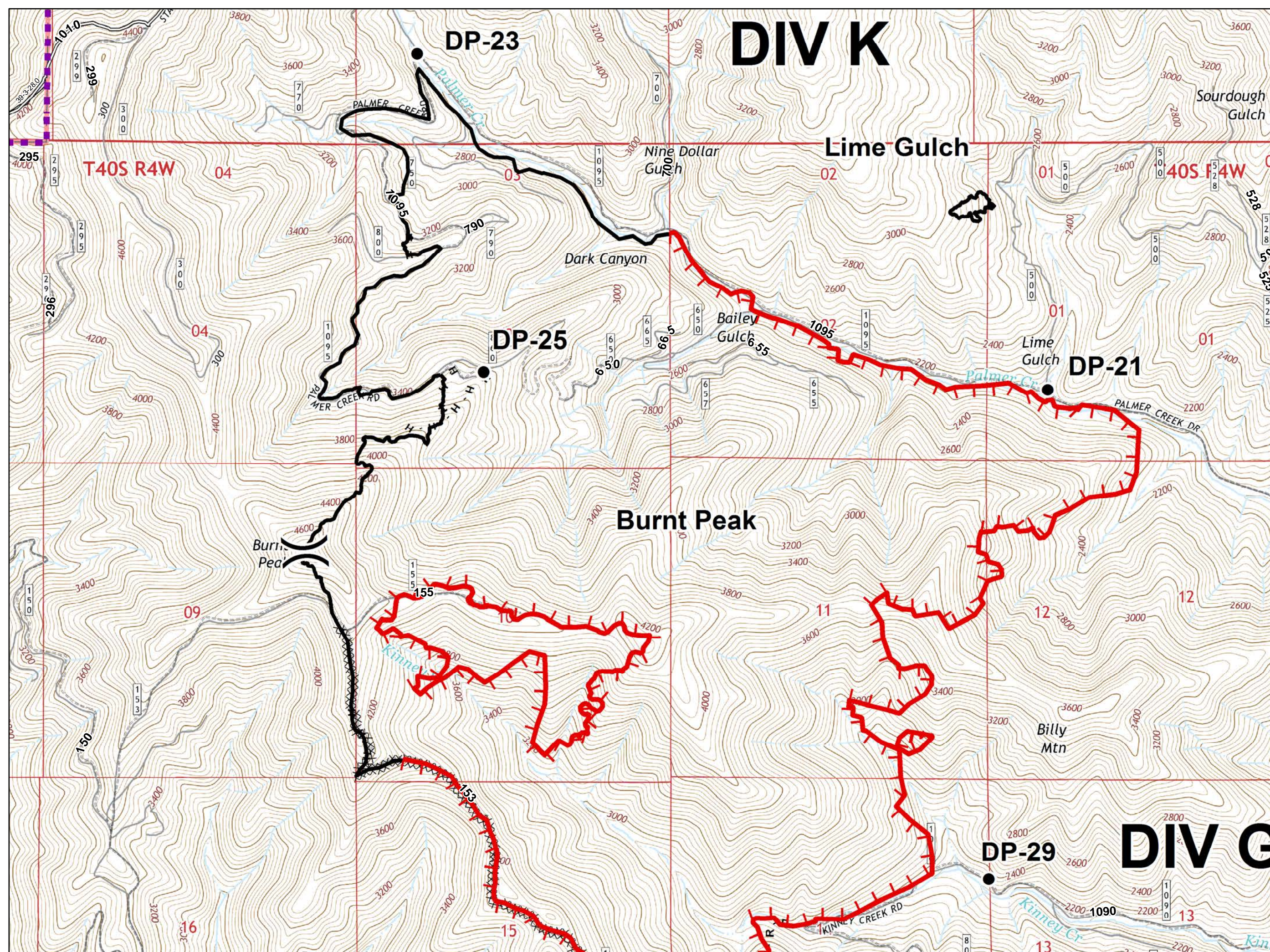
-  Camp
-  Drop Point
-  Repeater
-  Division Break
-  Uncontrolled Fire Edge
-  Completed Dozer Line
-  Completed Hand Line
-  IA Responsibility
-  High Clearance Vehicles
-  Improved Roads
-  Bureau of Land Management;
Private; Other Agency -
Includes city, county, state,
and federal agencies
(including the Federal
Highway Administration)



-  Camp
-  Dip Site
-  Drop Point
-  Division Break
-  Uncontrolled Fire Edge
-  Completed Hand Line
-  High Clearance Vehicles



-  Drop Point
-  Division Break
-  Uncontrolled Fire Edge
-  Completed Line
-  Completed Dozer Line
-  Completed Hand Line
-  Road as Completed Line
-  IA Responsibility
-  High Clearance Vehicles
-  Improved Roads
-  Bureau of Land Management; Private; Other Agency - Includes city, county, state, and federal agencies (including the Federal Highway Administration)



- Fire Location, Contained
- Drop Point
- Helispot
- Uncontrolled Fire Edge
- Completed Dozer Line
- Road as Completed Div Line
- IA Responsibility
- High Clearance Vehicles
- Improved Roads

DIV G

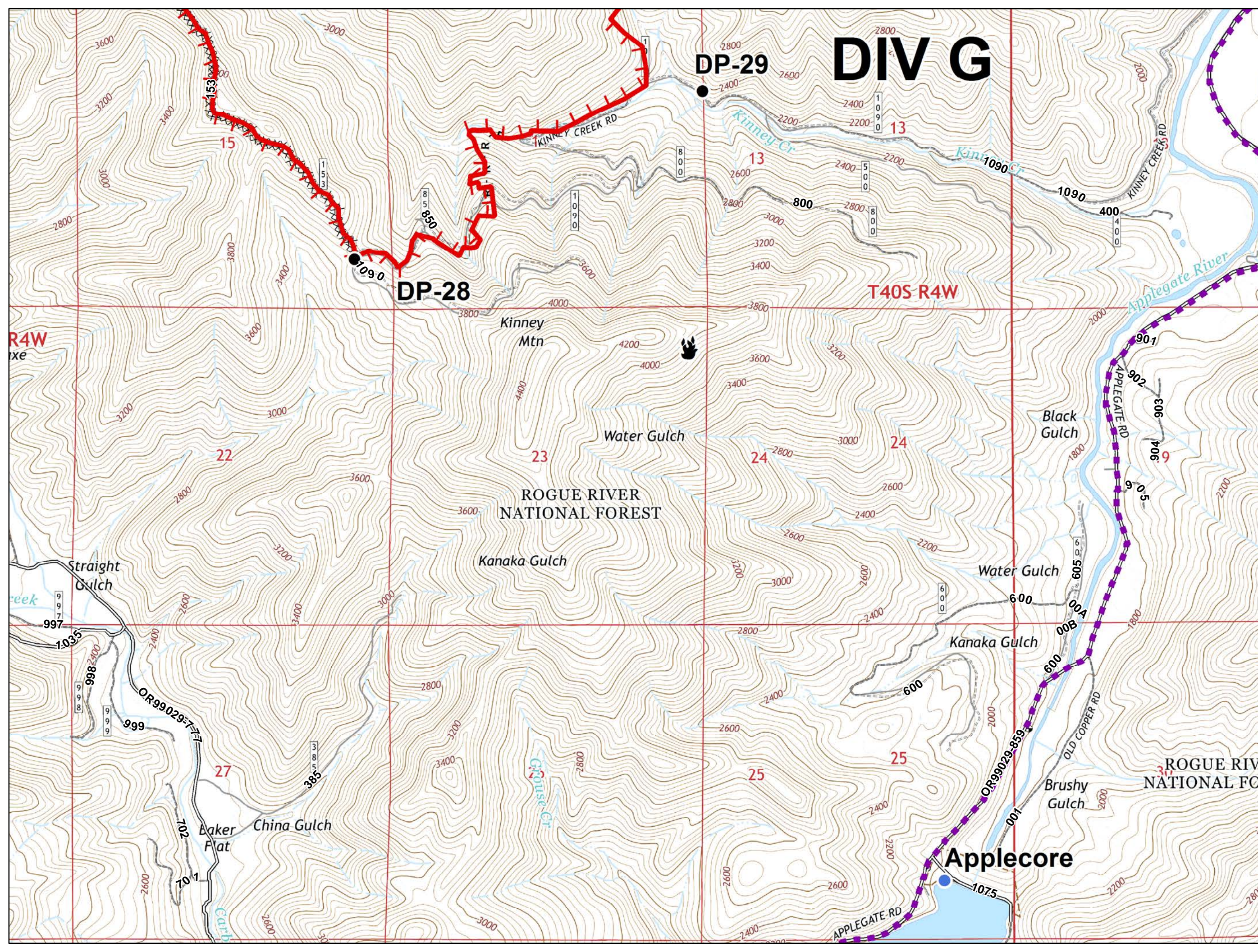
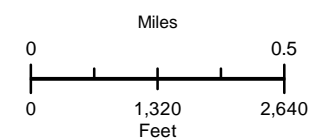
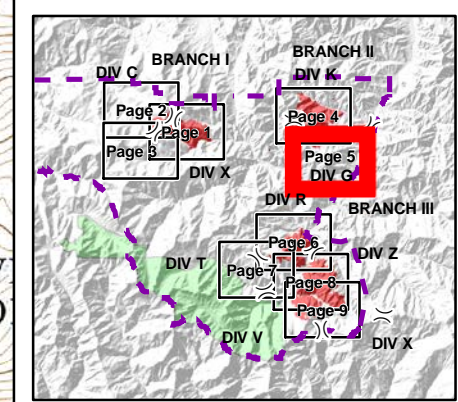
DP-29

DP-28

T40S R4W

ROGUE RIVER NATIONAL FOREST

Applecore

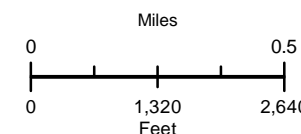
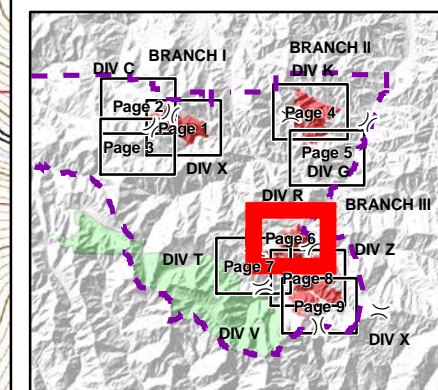
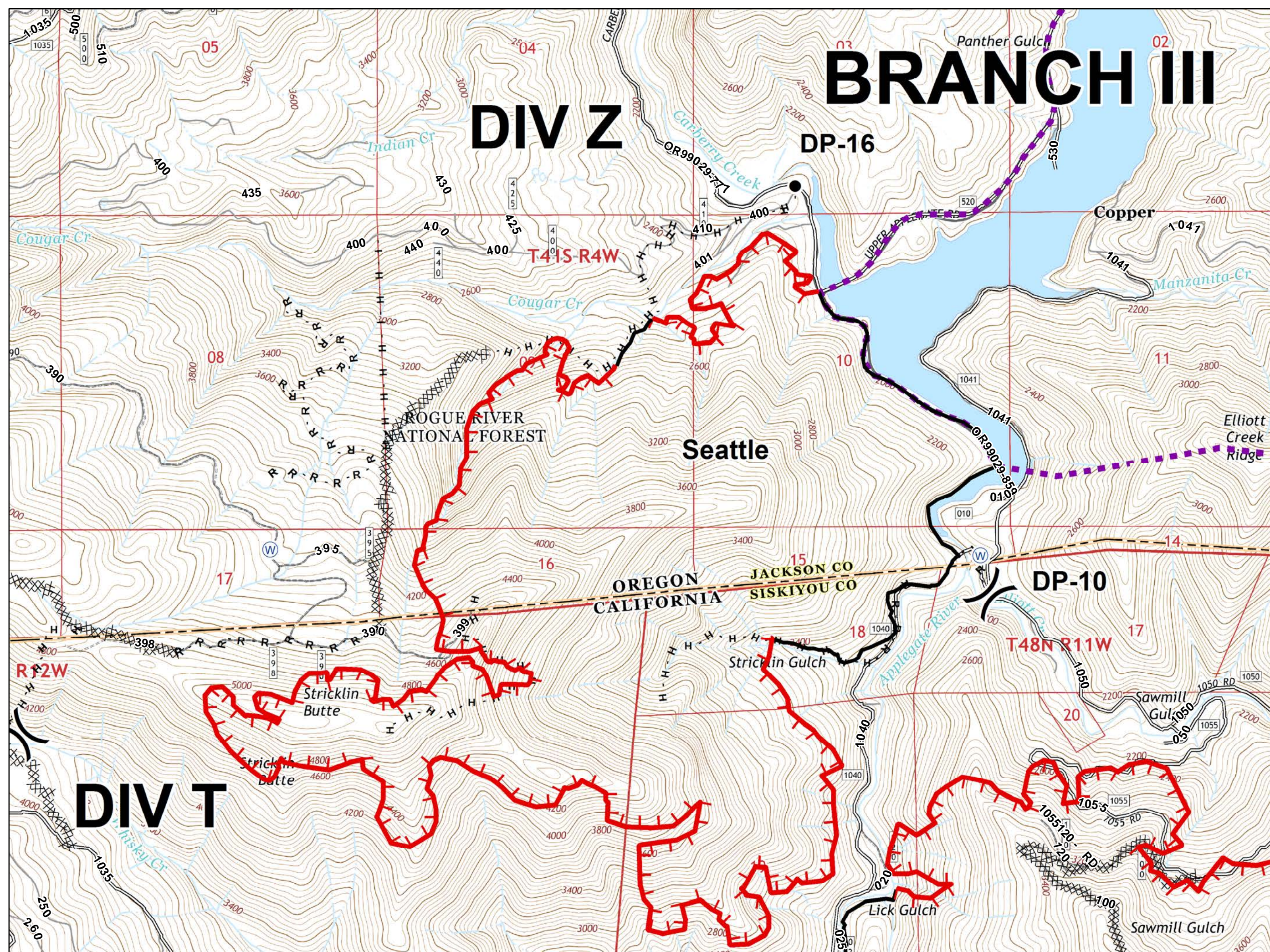


- Drop Point
- Ⓜ Water Source
-) (Division Break
- 🔴 Uncontrolled Fire Edge
- ⚫ Completed Line
- ⚫ Completed Dozer Line
- ⚫ Completed Hand Line
- ⚫ Road as Completed Line
- 🟡 IA Responsibility
- ⚫ High Clearance Vehicles
- ⚫ Improved Roads

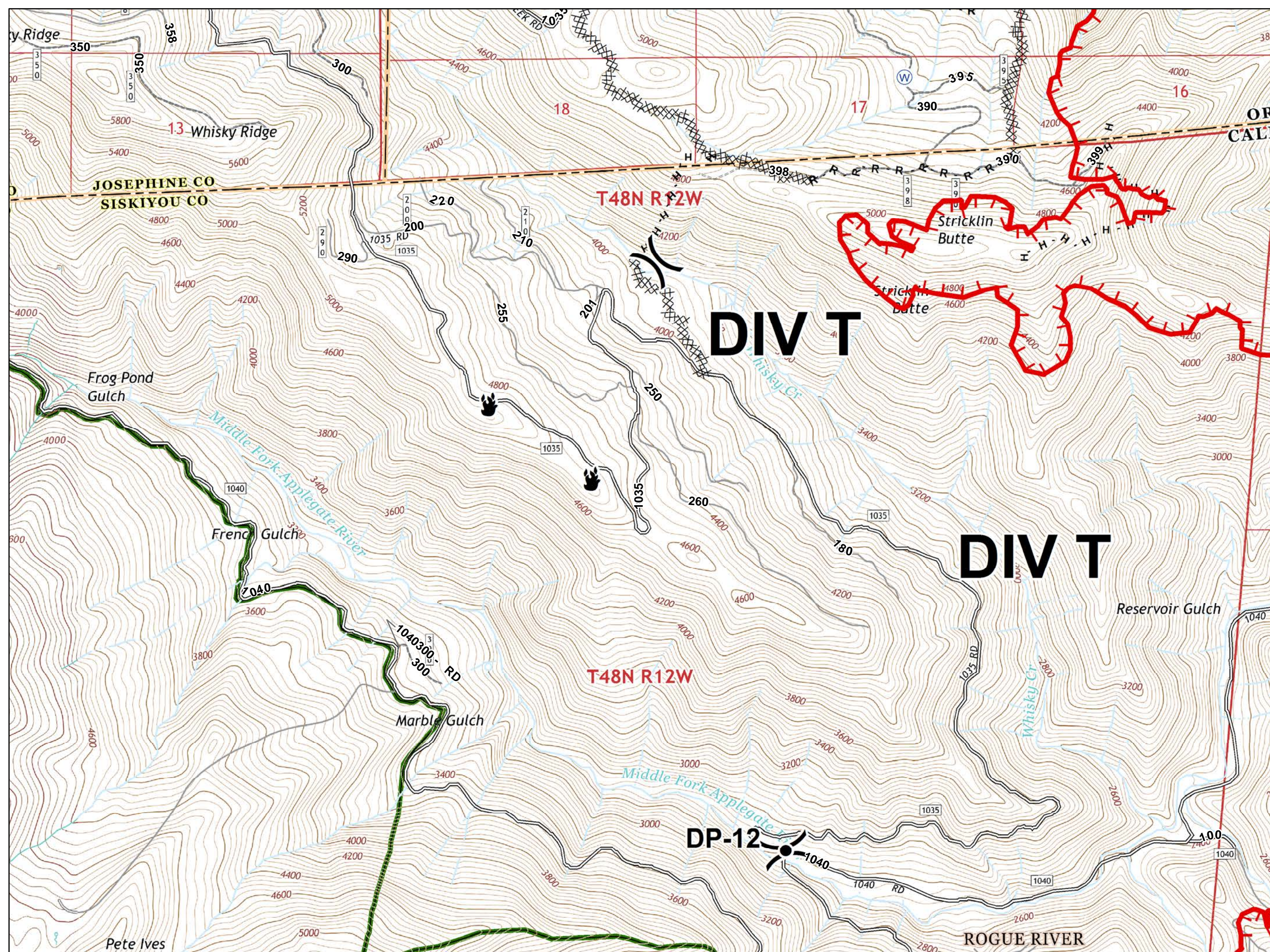
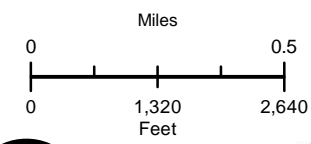
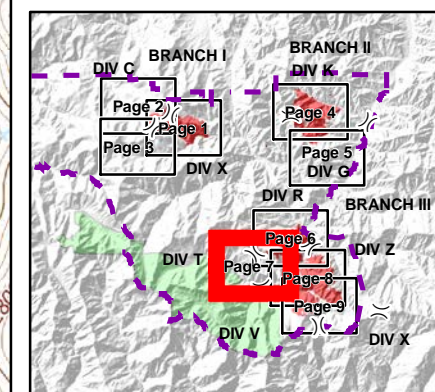
BRANCH III

DIV Z

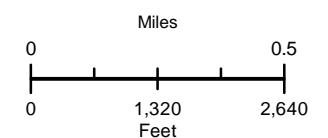
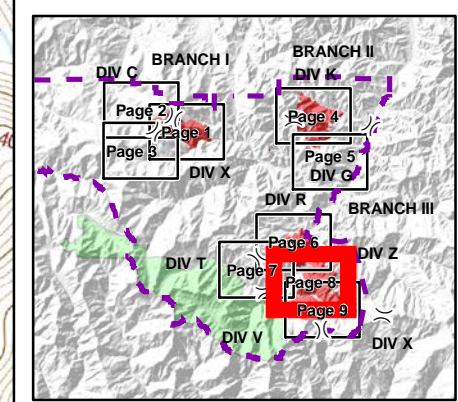
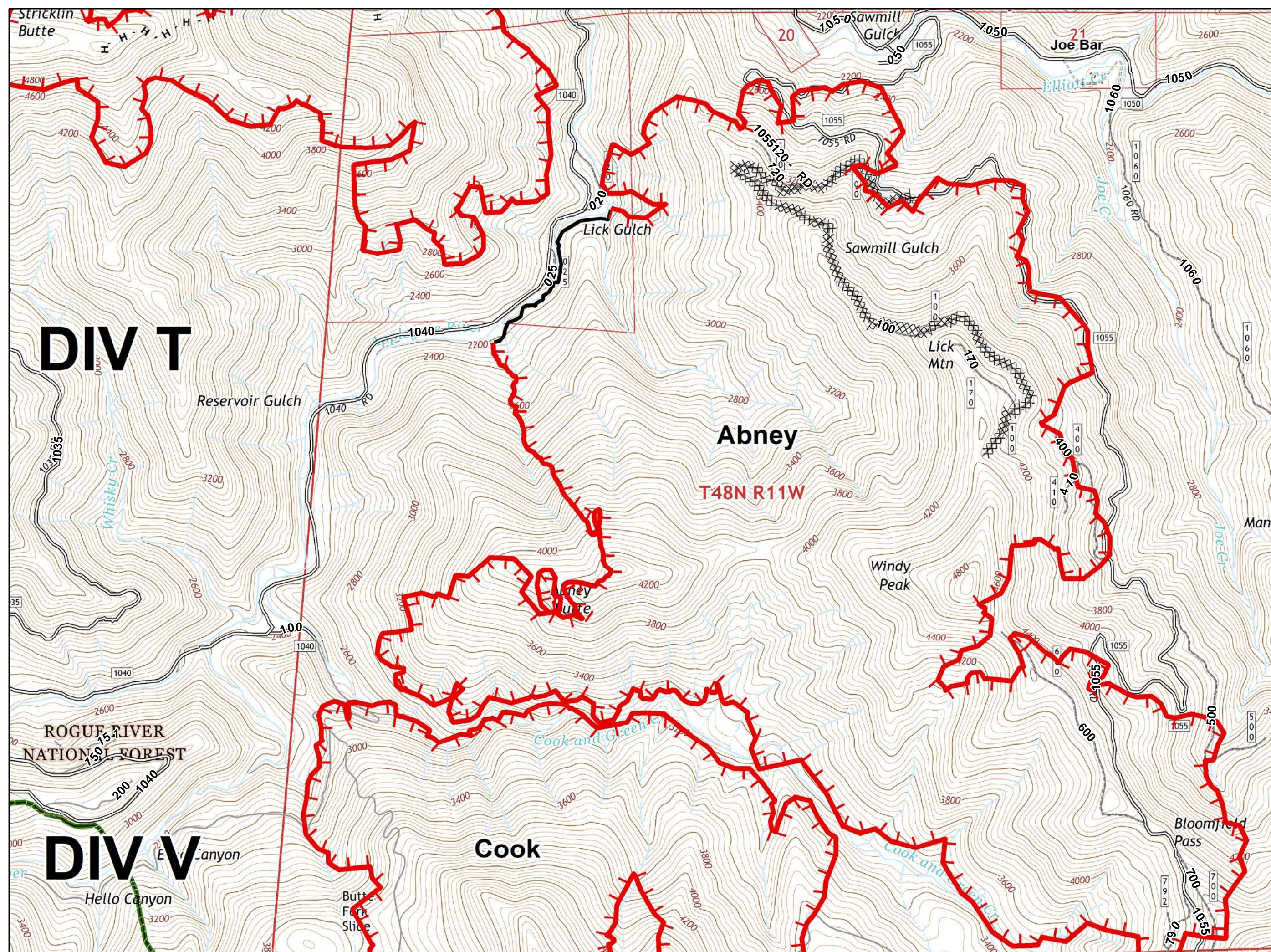
DIV T



- Fire Location, Contained
- Drop Point
- Water Source
- Division Break
- Uncontrolled Fire Edge
- Completed Line
- Completed Dozer Line
- Completed Hand Line
- Road as Completed Line
- High Clearance Vehicles
- Improved Roads
- Wilderness



- Uncontrolled Fire Edge
- Completed Line
- Completed Dozer Line
- Completed Hand Line
- High Clearance Vehicles
- Improved Roads
- Wilderness



(R) Repeater

) (Division Break

Uncontrolled Fire Edge

IA Responsibility

High Clearance Vehicles

Improved Roads

