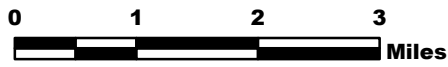


MILLER COMPLEX OR-RSF-000647

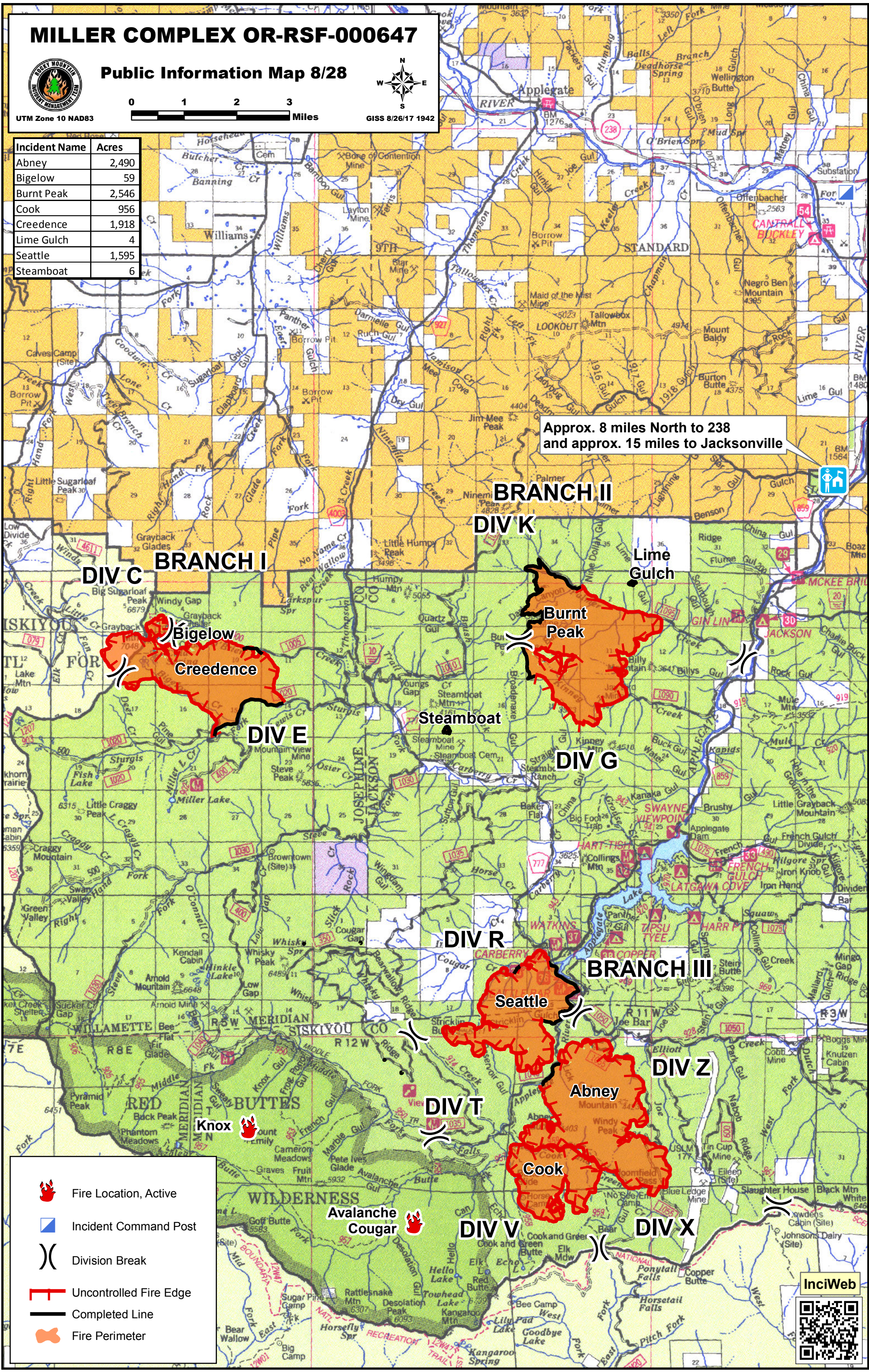


Public Information Map 8/28



UTM Zone 10 NAD83 GISS 8/26/17 1942

Incident Name	Acres
Abney	2,490
Bigelow	59
Burnt Peak	2,546
Cook	956
Credence	1,918
Lime Gulch	4
Seattle	1,595
Steamboat	6



Approx. 8 miles North to 238 and approx. 15 miles to Jacksonville

DIV C **BRANCH I**

BRANCH II
DIV K

Bigelow
Credence

Burnt Peak

DIV E

Steamboat

DIV G

DIV R

BRANCH III

Seattle

DIV Z

Abney

DIV T

Knox

Cook

DIV V

DIV X

Avalanche
Cougar

- Fire Location, Active
- Incident Command Post
- Division Break
- Uncontrolled Fire Edge
- Completed Line
- Fire Perimeter

InciWeb

