

123°34'W 123°32'W 123°30'W 123°28'W 123°26'W 123°24'W 123°22'W 123°20'W 123°18'W 123°16'W 123°14'W 123°12'W 123°10'W 123°8'W 123°6'W 123°4'W 123°2'W 123°0'W 122°58'W 122°56'W 122°54'W 122°52'W

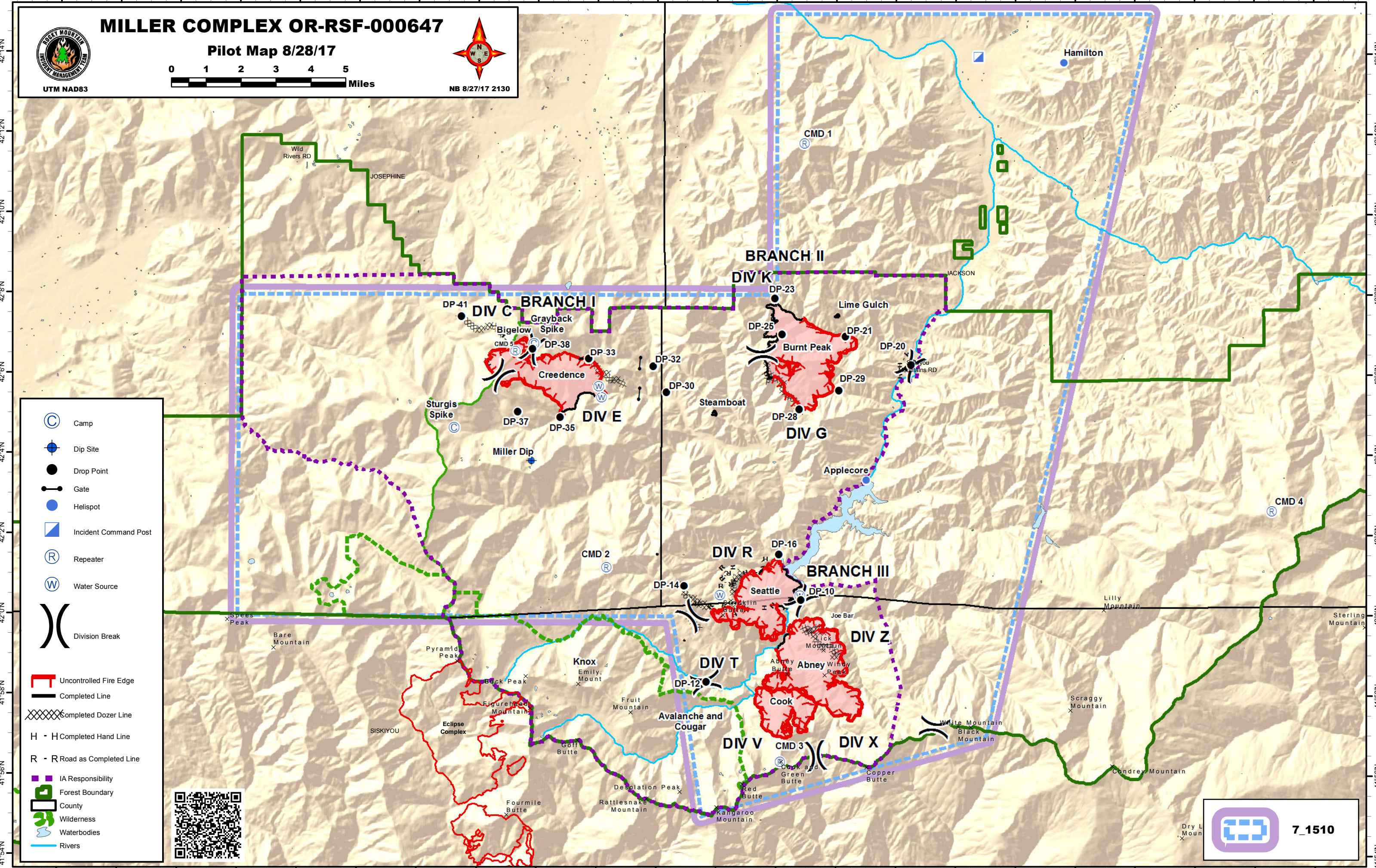
MILLER COMPLEX OR-RSF-000647

Pilot Map 8/28/17

UTM NAD83

0 1 2 3 4 5 Miles

NB 8/27/17 2130



- Camp
- Dip Site
- Drop Point
- Gate
- Helispot
- Incident Command Post
- Repeater
- Water Source
- Division Break
- Uncontrolled Fire Edge
- Completed Line
- Completed Dozer Line
- H - H Completed Hand Line
- R - R Road as Completed Line
- IA Responsibility
- Forest Boundary
- County
- Wilderness
- Waterbodies
- Rivers



7_1510

42°14'N
42°12'N
42°10'N
42°8'N
42°6'N
42°4'N
42°2'N
42°0'N
41°58'N
41°56'N
41°54'N

42°14'N
42°12'N
42°10'N
42°8'N
42°6'N
42°4'N
42°2'N
42°0'N
41°58'N
41°56'N
41°54'N

123°34'W 123°32'W 123°30'W 123°28'W 123°26'W 123°24'W 123°22'W 123°20'W 123°18'W 123°16'W 123°14'W 123°12'W 123°10'W 123°8'W 123°6'W 123°4'W 123°2'W 123°0'W 122°58'W 122°56'W 122°54'W 122°52'W