

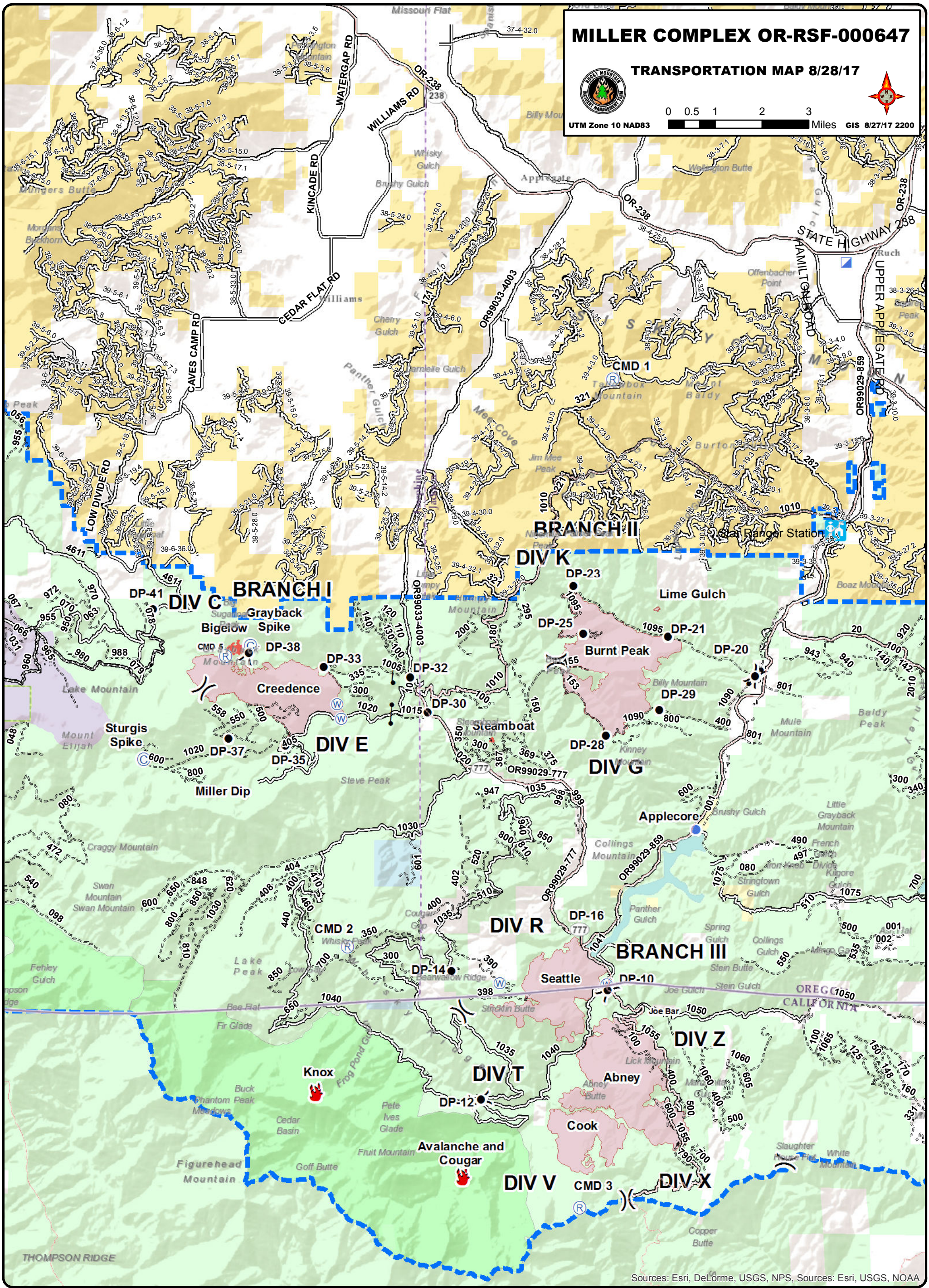
# MILLER COMPLEX OR-RSF-000647

TRANSPORTATION MAP 8/28/17



UTM Zone 10 NAD83

0 0.5 1 2 3 Miles GIS 8/27/17 2200



Sources: Esri, DeLorme, USGS, NPS, Sources: Esri, USGS, NOAA

	Stations		Gate		Water Source		BOR & Bonneville Pwr & Corps of Eng.		National Park Service
	Fire Location, Active		Helispot		Division Break		BLM		U.S. Forest Service
	Camp		Incident Command Post		Administrative Forest Boundary		State		Private
	Drop Point		Repeater		Wilderness				