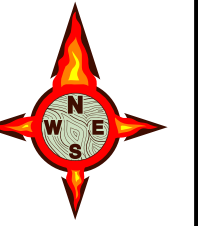


MILLER COMPLEX OR-RSF-000647

Branch III East OPS 8/29/17



UTM NAD83

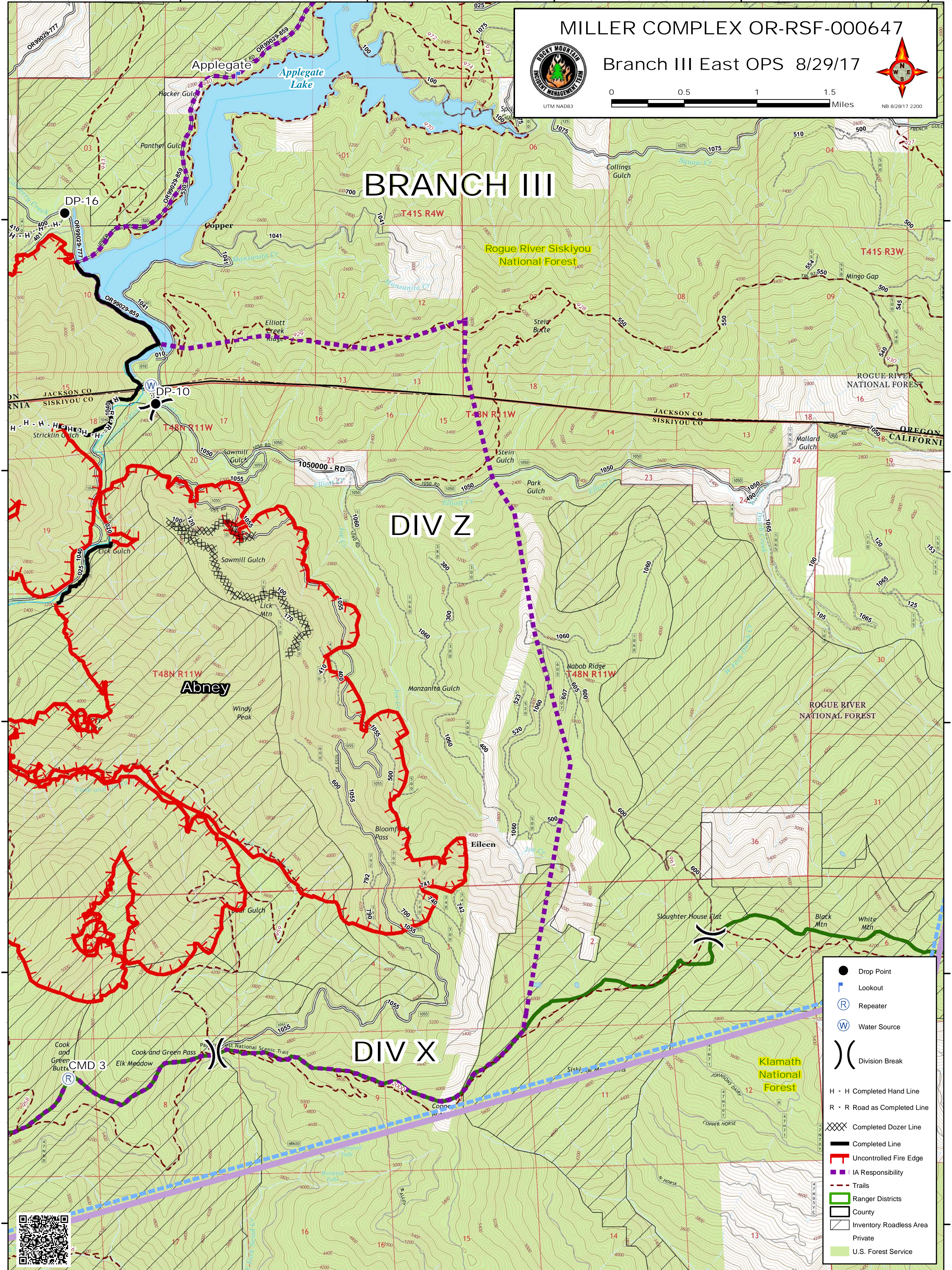


NB 8/28/17 2200

BRANCH III

DIV Z

DIV X



- Drop Point
- ⌓ Lookout
- Ⓡ Repeater
- Ⓜ Water Source
- ⌋⌋ Division Break
- H - H Completed Hand Line
- R - R Road as Completed Line
- ⊗⊗⊗ Completed Dozer Line
- Completed Line
- Uncontrolled Fire Edge
- IA Responsibility
- Trails
- ▭ Ranger Districts
- ▭ County
- ▭ Inventory Roadless Area
- ▭ Private
- ▭ U.S. Forest Service

