

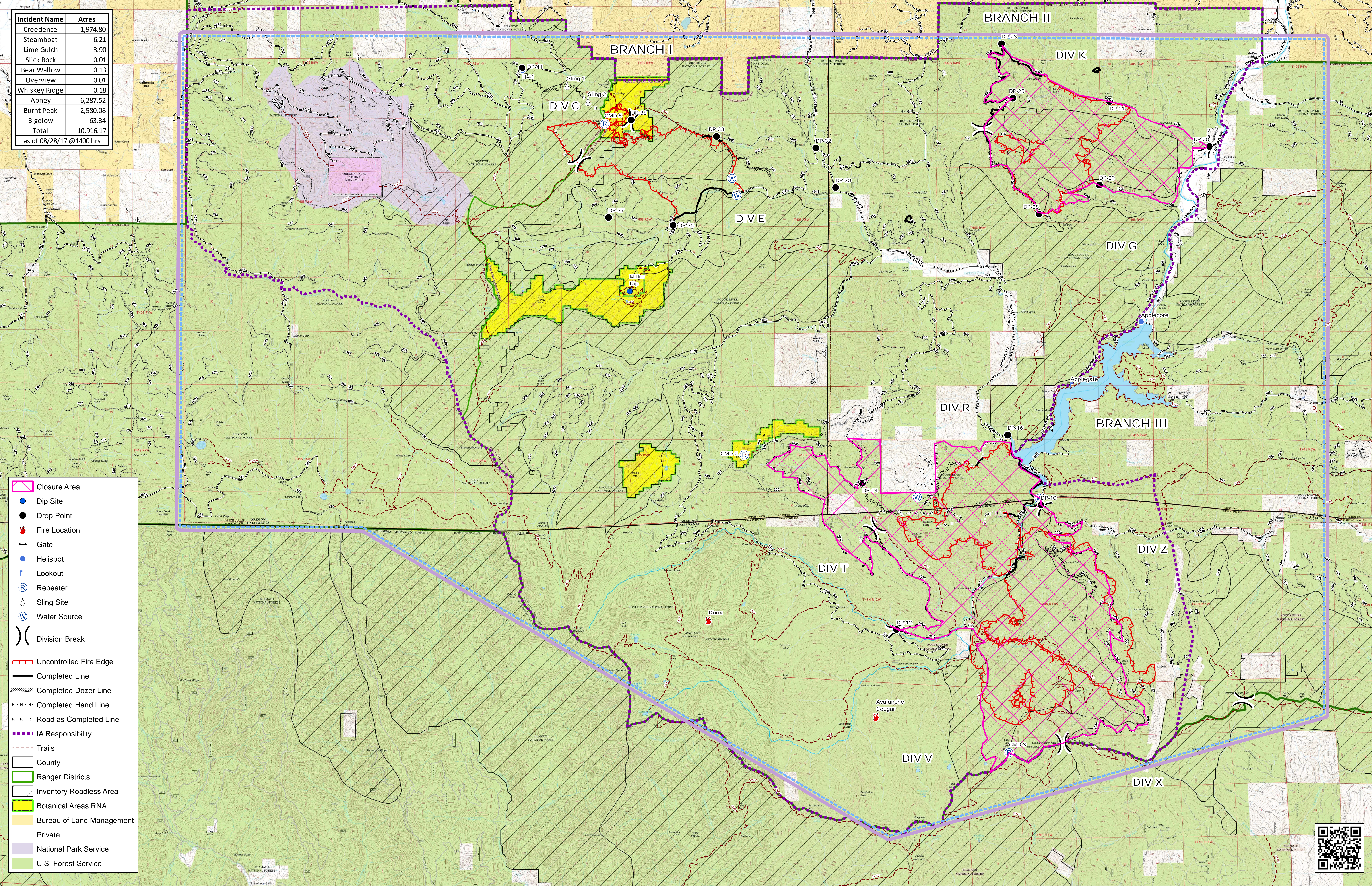
# MILLER COMPLEX OR-RSF-000647



## Fire Closure Area 8/29/17



Incident Name	Acres
Credence	1,974.80
Steamboat	6.21
Lime Gulch	3.90
Slick Rock	0.01
Bear Wallow	0.13
Overview	0.01
Whiskey Ridge	0.18
Abney	6,287.52
Burnt Peak	2,580.08
Bigelow	63.34
<b>Total</b>	<b>10,916.17</b>
as of 08/28/17 @1400 hrs	



**Legend**

- Closure Area
- Dip Site
- Drop Point
- Fire Location
- Gate
- Helispot
- Lookout
- Repeater
- Sling Site
- Water Source
- Division Break
- Uncontrolled Fire Edge
- Completed Line
- Completed Dozer Line
- Completed Hand Line
- Road as Completed Line
- IA Responsibility
- Trails
- County
- Ranger Districts
- Inventory Roadless Area
- Botanical Areas RNA
- Bureau of Land Management
- Private
- National Park Service
- U.S. Forest Service

