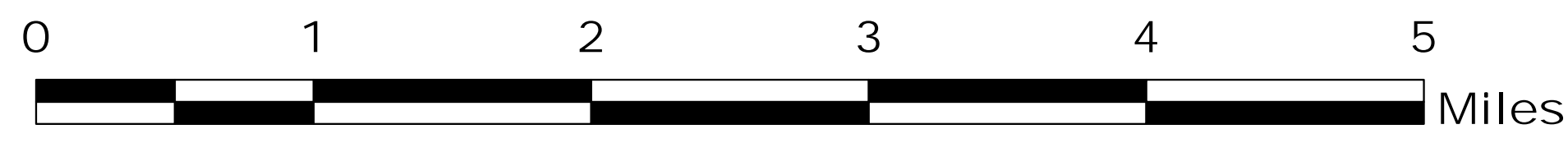


# MILLER COMPLEX OR-RSF-000647

## Operations Map 8/30/17



UTM NAD83



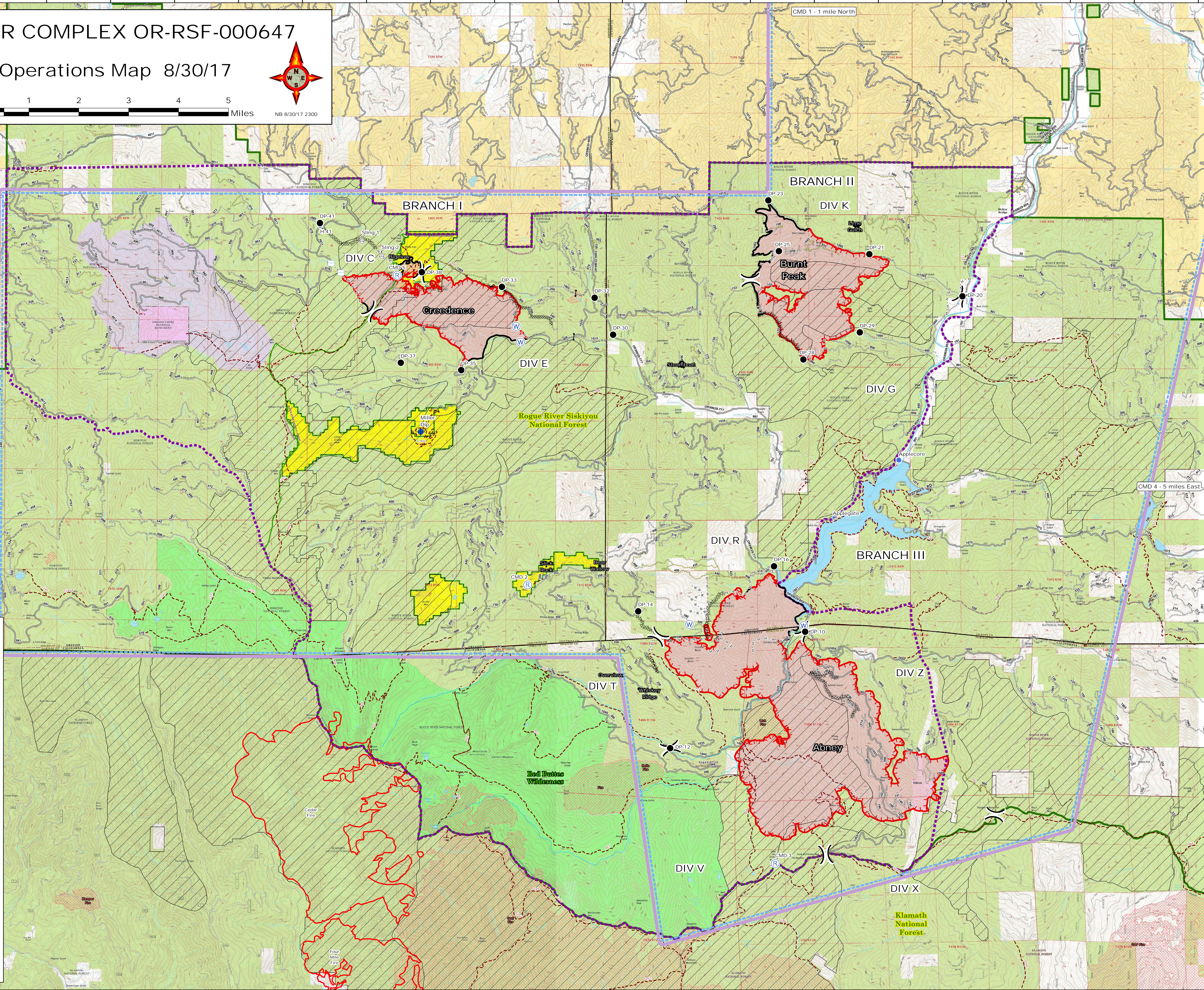
NB 8/30/17 2300

IncidentName	GISAcres
Abney	7948.32
Bear Wallow	0.13
Bigelow	70.45
Burnt Peak	2580.08
Creedence	1993.46
Lime Gulch	3.90
Overview	0.01
Slick Rock	0.01
Steamboat	6.21
Whiskey Ridge	0.18
<b>Total</b>	<b>12602.72</b>

as of 8/29/17 @ 2300



- TFR 7\_1510
- Dip Site
- Drop Point
- Gate
- Helispot
- Lookout
- Repeater
- Sling Site
- Water Source
- Water Tank
- Division Break
- Completed Hand Line
- Road as Completed Line
- Completed Dozer Line
- Uncontrolled Fire Edge
- Completed Line
- IA Responsibility
- County
- Ranger Districts
- Inventory Roadless Area
- Fire History 2007-2016
- Wilderness
- Botanical Areas RNA
- Bureau of Land Management
- Private
- National Park Service
- U.S. Forest Service



CMD 4 - 5 miles East

CMD 1 - 1 mile North