

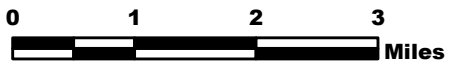
MILLER COMPLEX OR-RSF-000647



Public Information Map 8/30



UTM Zone 10 NAD83

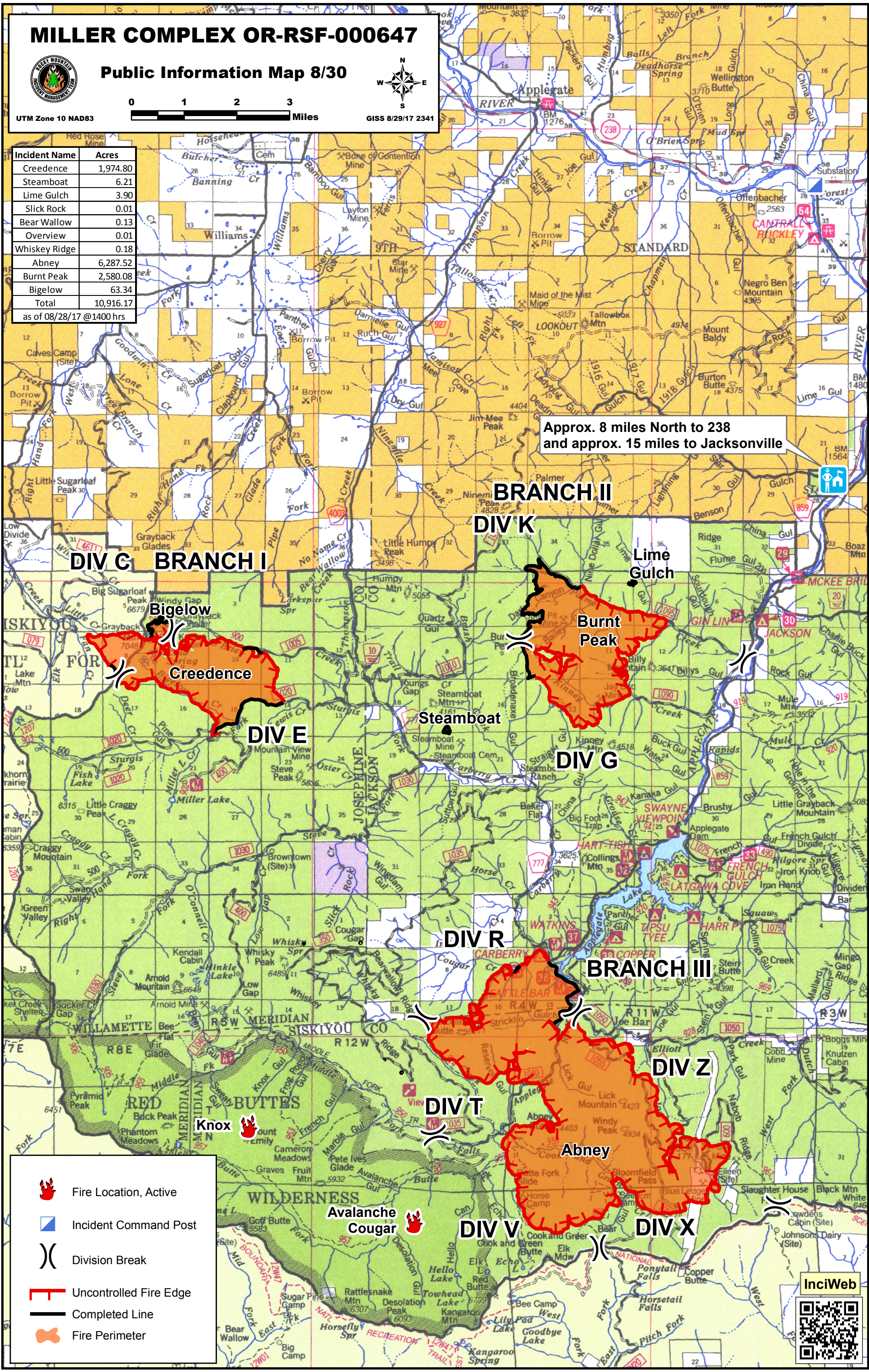


GISS 8/29/17 2341

Incident Name	Acres
Creedence	1,974.80
Steamboat	6.21
Lime Gulch	3.90
Slick Rock	0.01
Bear Wallow	0.13
Overview	0.01
Whiskey Ridge	0.18
Abney	6,287.52
Burnt Peak	2,580.08
Bigelow	63.34
Total	10,916.17

as of 08/28/17 @1400 hrs

Approx. 8 miles North to 238 and approx. 15 miles to Jacksonville



- Fire Location, Active
- Incident Command Post
- Division Break
- Uncontrolled Fire Edge
- Completed Line
- Fire Perimeter

InciWeb