

MILLER COMPLEX OR-RSF-000647



Northern Ops Map 8/31/17



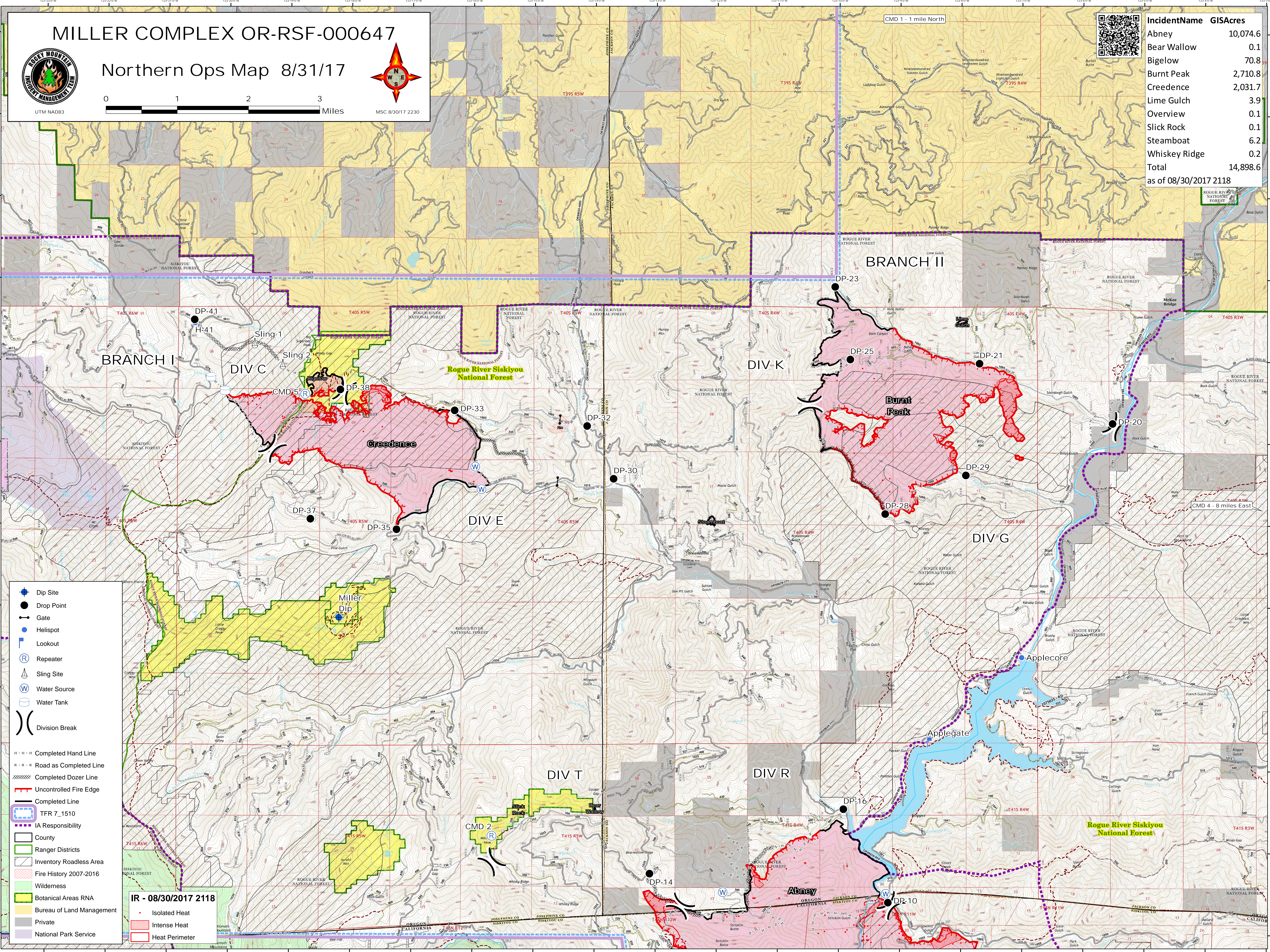
0 1 2 3 Miles

MSC 8/30/17 2230



IncidentName	GISAcres
Abney	10,074.6
Bear Wallow	0.1
Bigelow	70.8
Burnt Peak	2,710.8
Creedence	2,031.7
Lime Gulch	3.9
Overview	0.1
Slick Rock	0.1
Steamboat	6.2
Whiskey Ridge	0.2
Total	14,898.6

as of 08/30/2017 2118



- Dip Site
- Drop Point
- Gate
- Helispot
- Lookout
- Repeater
- Sling Site
- Water Source
- Water Tank
- Division Break
- Completed Hand Line
- Road as Completed Line
- Completed Dozer Line
- Uncontrolled Fire Edge
- Completed Line
- TFR 7_1510
- IA Responsibility
- County
- Ranger Districts
- Inventory Roadless Area
- Fire History 2007-2016
- Wilderness
- Botanical Areas RNA
- Bureau of Land Management
- Private
- National Park Service

IR - 08/30/2017 2118

- Isolated Heat
- Intense Heat
- Heat Perimeter