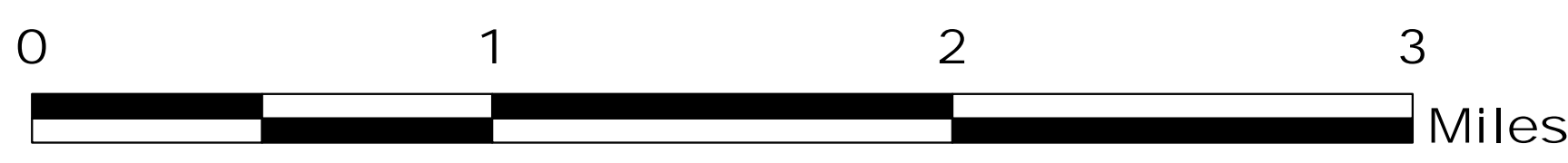


MILLER COMPLEX OR-RSF-000647



Northern Ops Map 8/31/17

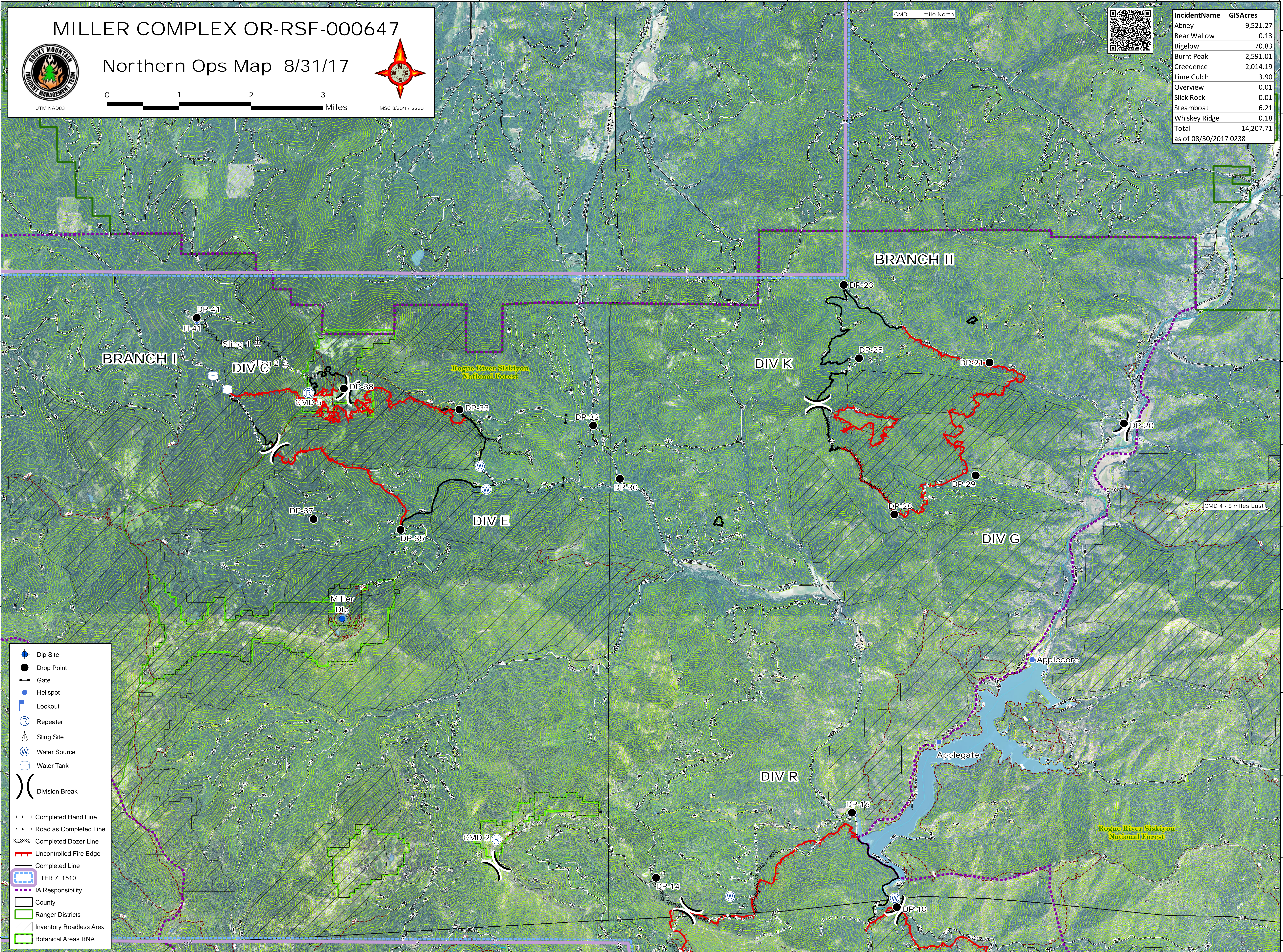


MSC 8/30/17 2230



IncidentName	GISAcres
Abney	9,521.27
Bear Wallow	0.13
Bigelow	70.83
Burnt Peak	2,591.01
Creedence	2,014.19
Lime Gulch	3.90
Overview	0.01
Slick Rock	0.01
Steamboat	6.21
Whiskey Ridge	0.18
Total	14,207.71

as of 08/30/2017 0238



- Dip Site
- Drop Point
- Gate
- Helispot
- Lookout
- Repeater
- Sling Site
- Water Source
- Water Tank
- Division Break
- Completed Hand Line
- Road as Completed Line
- Completed Dozer Line
- Uncontrolled Fire Edge
- Completed Line
- TFR 7_1510
- IA Responsibility
- County
- Ranger Districts
- Inventory Roadless Area
- Botanical Areas RNA