



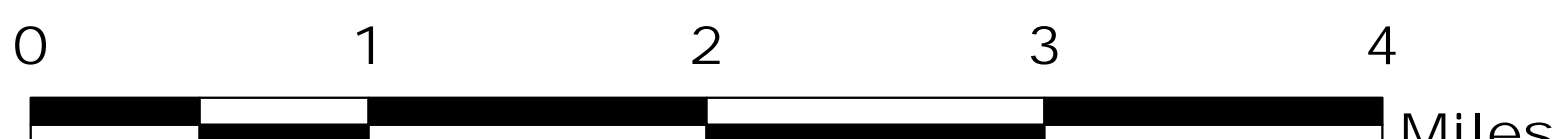
IncidentName	GISAcres
Abney	10,074.6
Bear Wallow	0.1
Bigelow	70.8
Burnt Peak	2,710.8
Creedence	2,031.7
Lime Gulch	3.9
Overview	0.1
Slick Rock	0.1
Steamboat	6.2
Whiskey Ridge	0.2
Total	14,898.6

as of 08/30/2017 2118


MILLER COMPLEX OR-RSF-000647

Operations Map 8/31/17

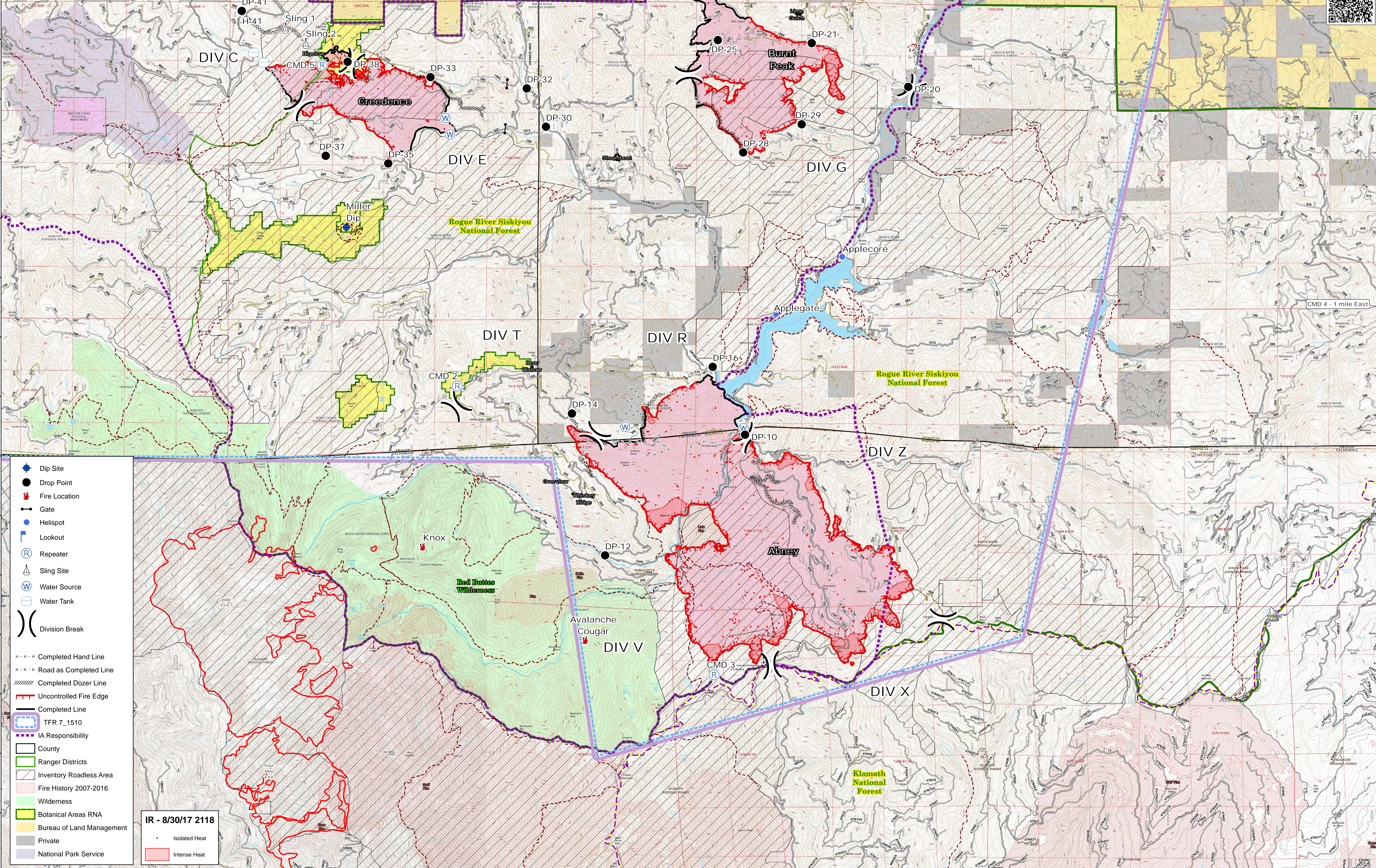





UTM NAD83



NB 8/31/17 0930



- Dip Site
- Drop Point
- Fire Location
- Gate
- Helispot
- Lookout
- Repeater
- Sling Site
- Water Source
- Water Tank
- Division Break
- Completed Hand Line
- Road as Completed Line
- Completed Dozer Line
- Uncontrolled Fire Edge
- Completed Line
- TFR 7_1510
- IA Responsibility
- County
- Ranger Districts
- Inventory Roadless Area
- Fire History 2007-2016
- Wilderness
- Botanical Areas RNA
- Bureau of Land Management
- Private
- National Park Service

IR - 8/30/17 2118

- Isolated Heat
- Intense Heat