

123°34'W 123°32'W 123°30'W 123°28'W 123°26'W 123°24'W 123°22'W 123°20'W 123°18'W 123°16'W 123°14'W 123°12'W 123°10'W 123°8'W 123°6'W 123°4'W 123°2'W 122°58'W 122°56'W 122°54'W 122°52'W

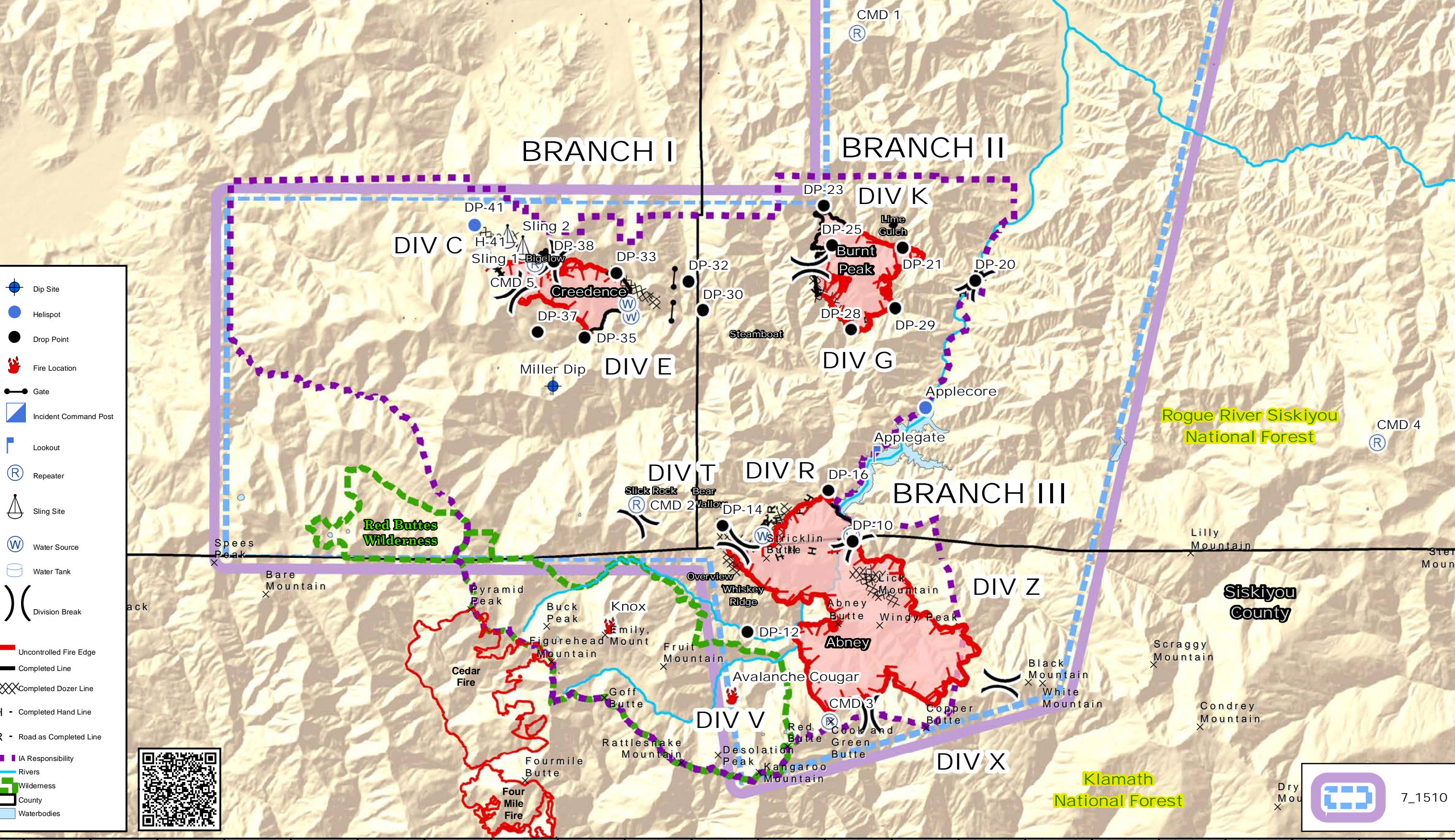


# MILLER COMPLEX OR-RSF-000647

Pilot Map 8/31/17



NB 8/30/17 2230



- Dip Site
- Helispot
- Drop Point
- Fire Location
- Gate
- Incident Command Post
- Lookout
- Repeater
- Sling Site
- Water Source
- Water Tank
- Division Break
- Uncontrolled Fire Edge
- Completed Line
- Completed Dozer Line
- Completed Hand Line
- Road as Completed Line
- IA Responsibility
- Rivers
- Wilderness
- County
- Waterbodies



Dry Mou X

7\_1510

123°34'W 123°32'W 123°30'W 123°28'W 123°26'W 123°24'W 123°22'W 123°20'W 123°18'W 123°16'W 123°14'W 123°12'W 123°10'W 123°8'W 123°6'W 123°4'W 123°2'W 122°58'W 122°56'W 122°54'W 122°52'W