

# MILLER COMPLEX OR-RSF-000647



## Southern Ops Map 8/31/17

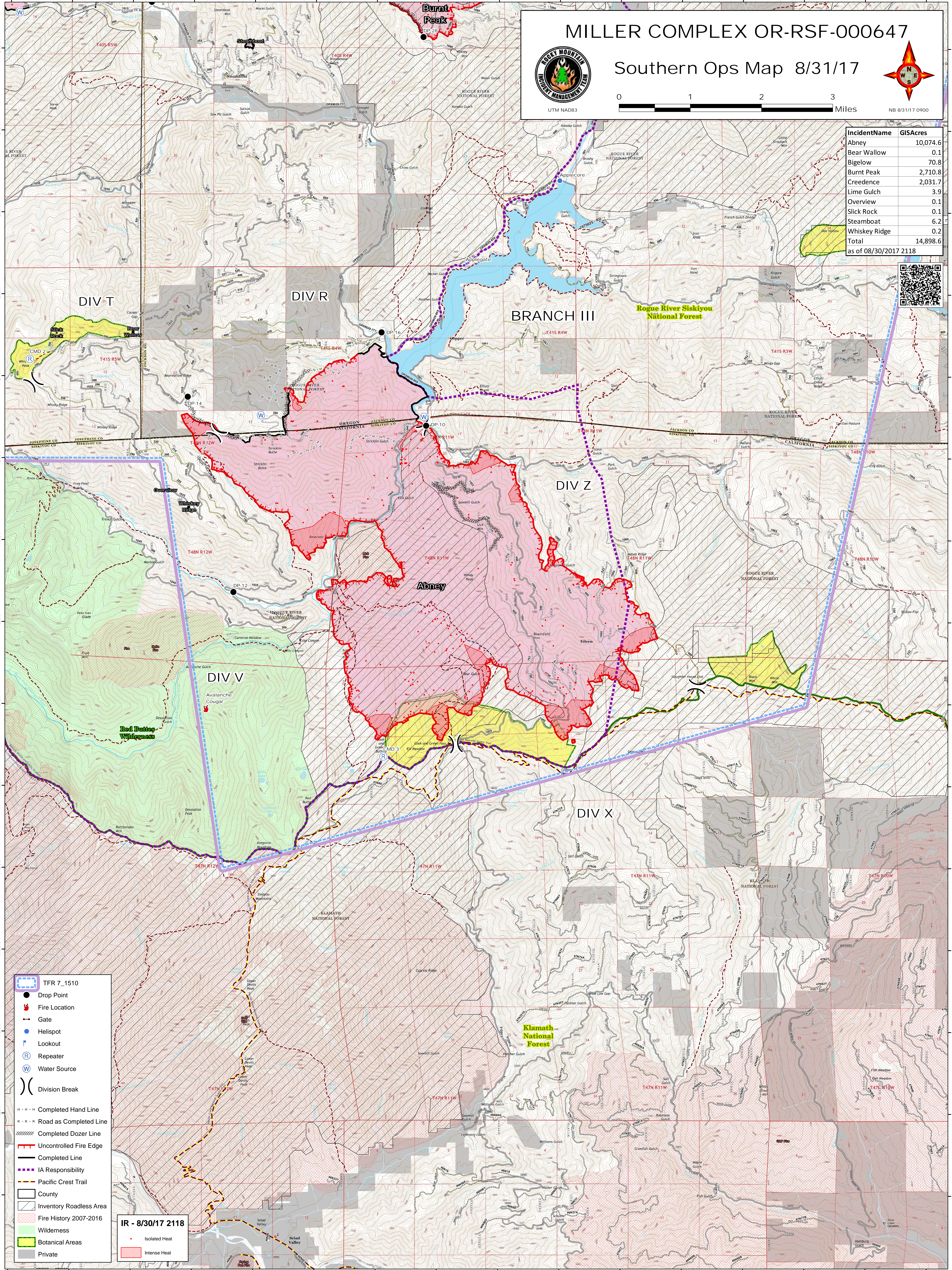


0 1 2 3 Miles

NB 8/31/17 0900

IncidentName	GISAcres
Abney	10,074.6
Bear Wallow	0.1
Bigelow	70.8
Burnt Peak	2,710.8
Creedence	2,031.7
Lime Gulch	3.9
Overview	0.1
Slick Rock	0.1
Steamboat	6.2
Whiskey Ridge	0.2
<b>Total</b>	<b>14,898.6</b>

as of 08/30/2017 2118



- TFR 7\_1510
- Drop Point
- Fire Location
- Gate
- Helispot
- Lookout
- Repeater
- Water Source
- Division Break
- Completed Hand Line
- Road as Completed Line
- Completed Dozer Line
- Uncontrolled Fire Edge
- Completed Line
- IA Responsibility
- Pacific Crest Trail
- County
- Inventory Roadless Area
- Fire History 2007-2016
- Wilderness
- Botanical Areas
- Private

**IR - 8/30/17 2118**

- Isolated Heat
- Intense Heat