

MILLER COMPLEX OR-RSF-000647



Southern Ops Map 8/31/17

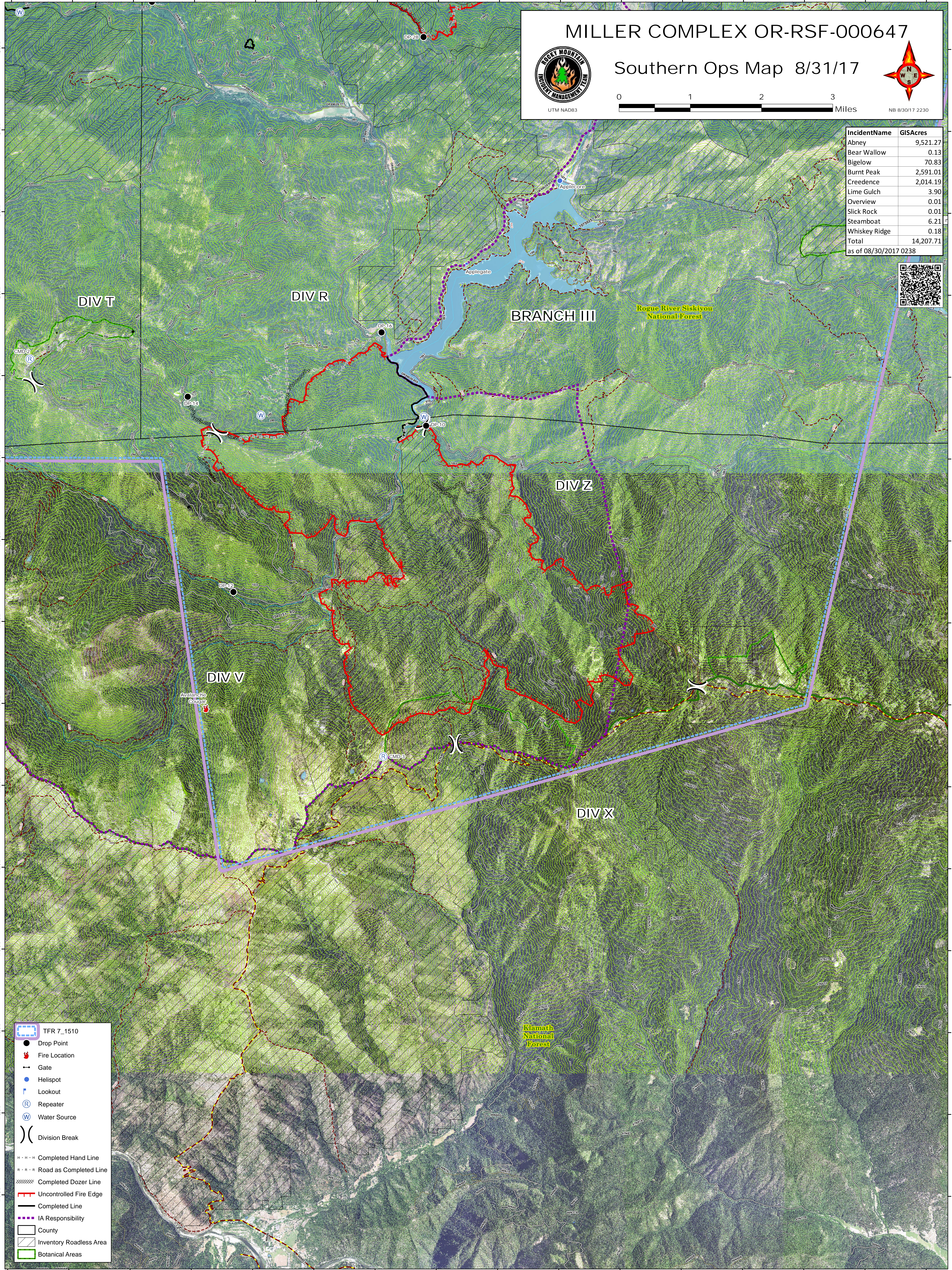


UTM NAD83

NB 8/30/17 2230

IncidentName	GISAcres
Abney	9,521.27
Bear Wallow	0.13
Bigelow	70.83
Burnt Peak	2,591.01
Creedence	2,014.19
Lime Gulch	3.90
Overview	0.01
Slick Rock	0.01
Steamboat	6.21
Whiskey Ridge	0.18
Total	14,207.71

as of 08/30/2017 0238



- TFR 7_1510
- Drop Point
- Fire Location
- Gate
- Helispot
- Lookout
- Repeater
- Water Source
- Division Break
- Completed Hand Line
- Road as Completed Line
- Completed Dozer Line
- Uncontrolled Fire Edge
- Completed Line
- IA Responsibility
- County
- Inventory Roadless Area
- Botanical Areas