


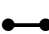











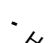






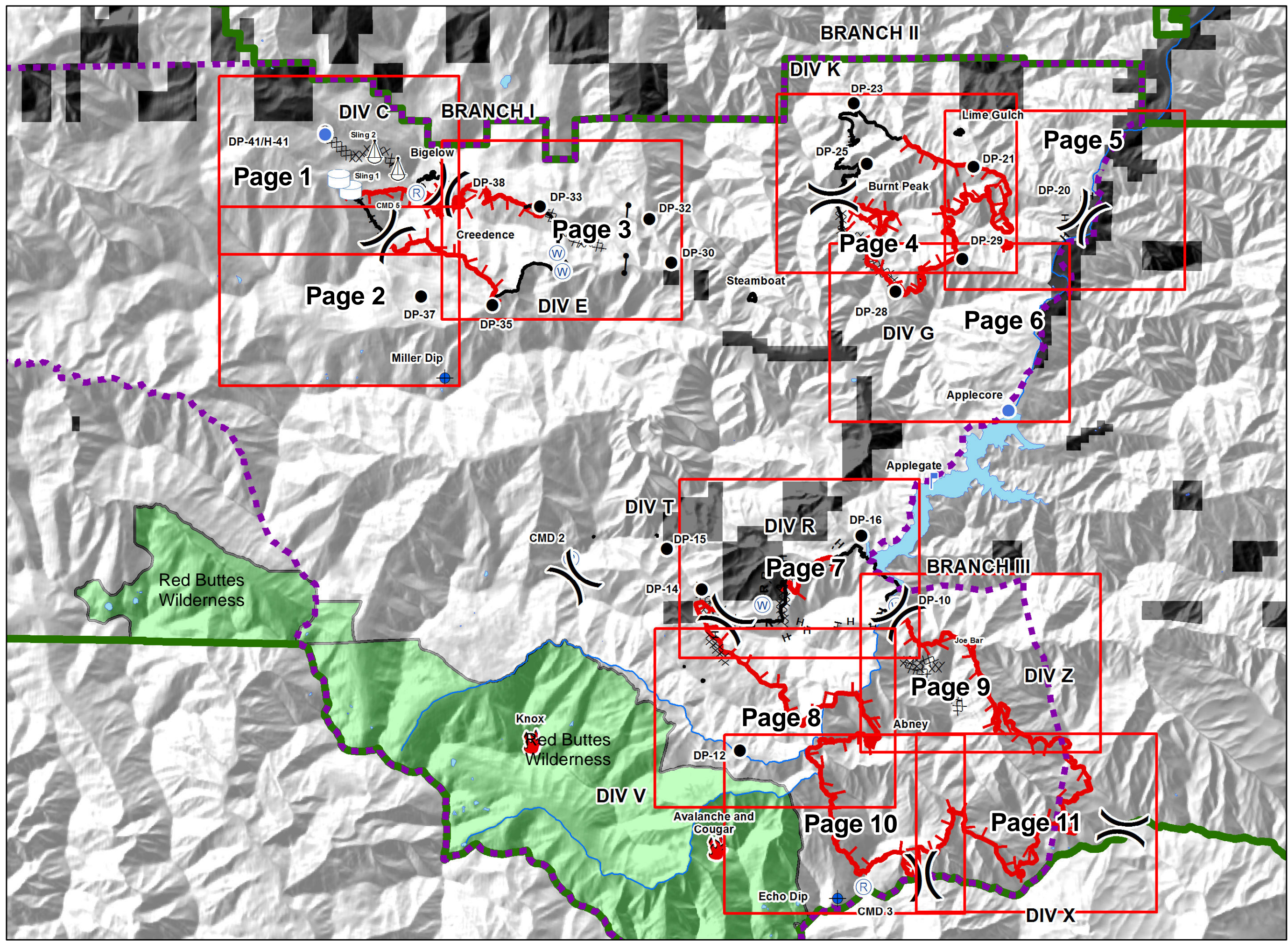
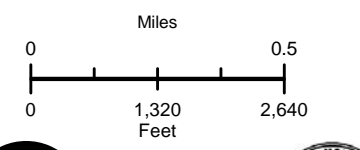
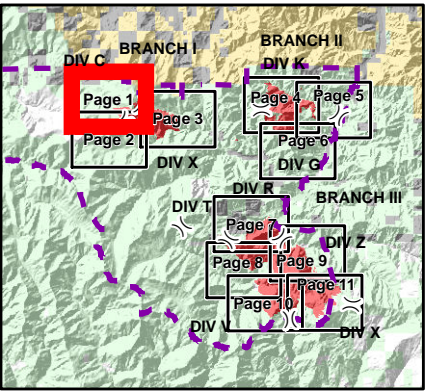
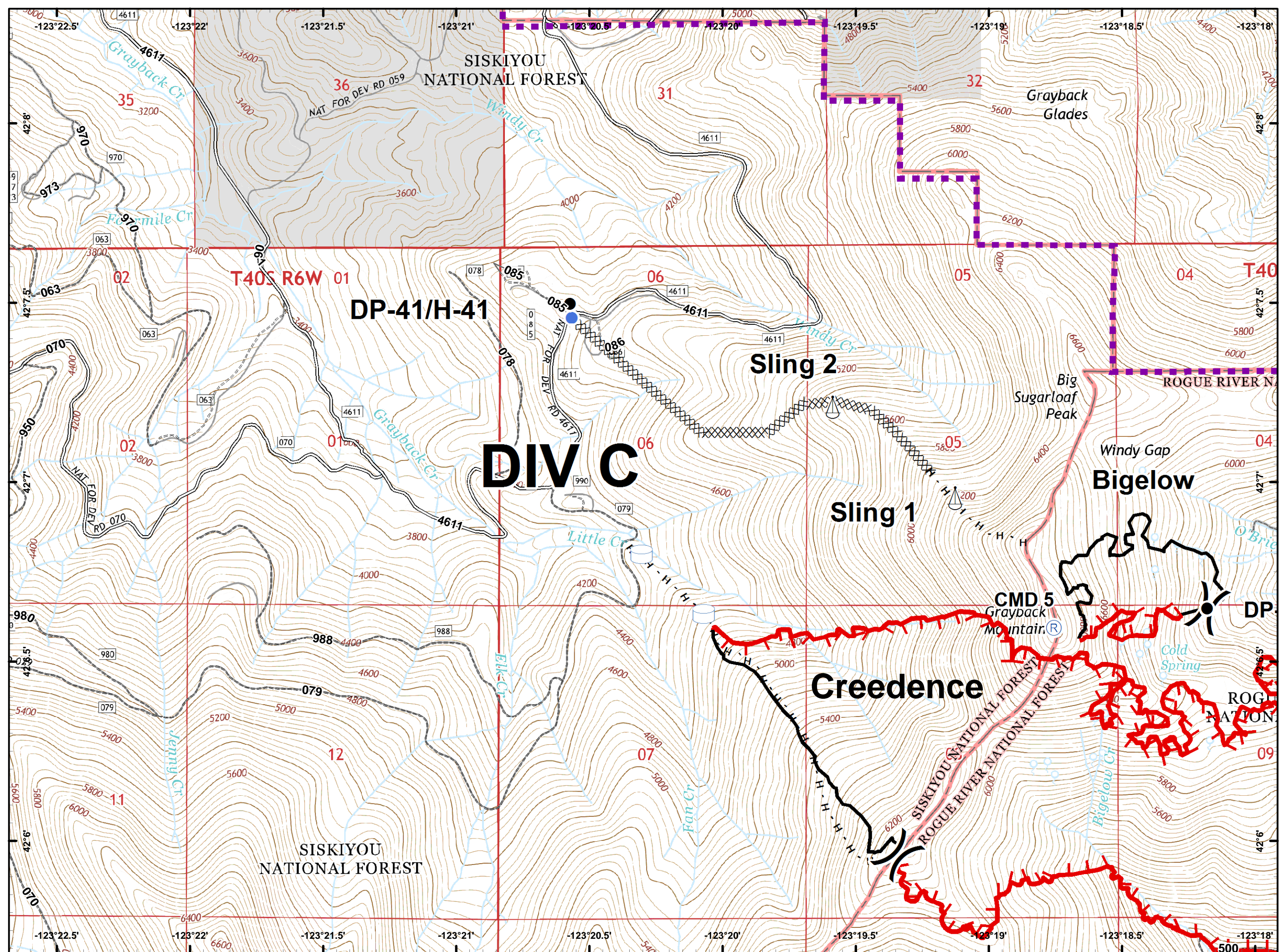


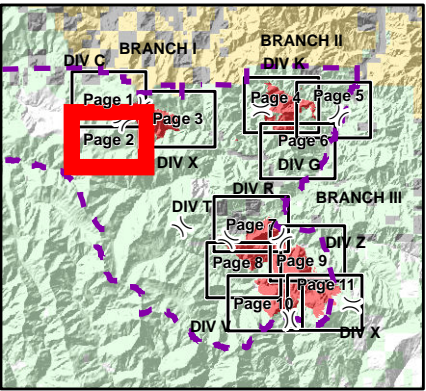
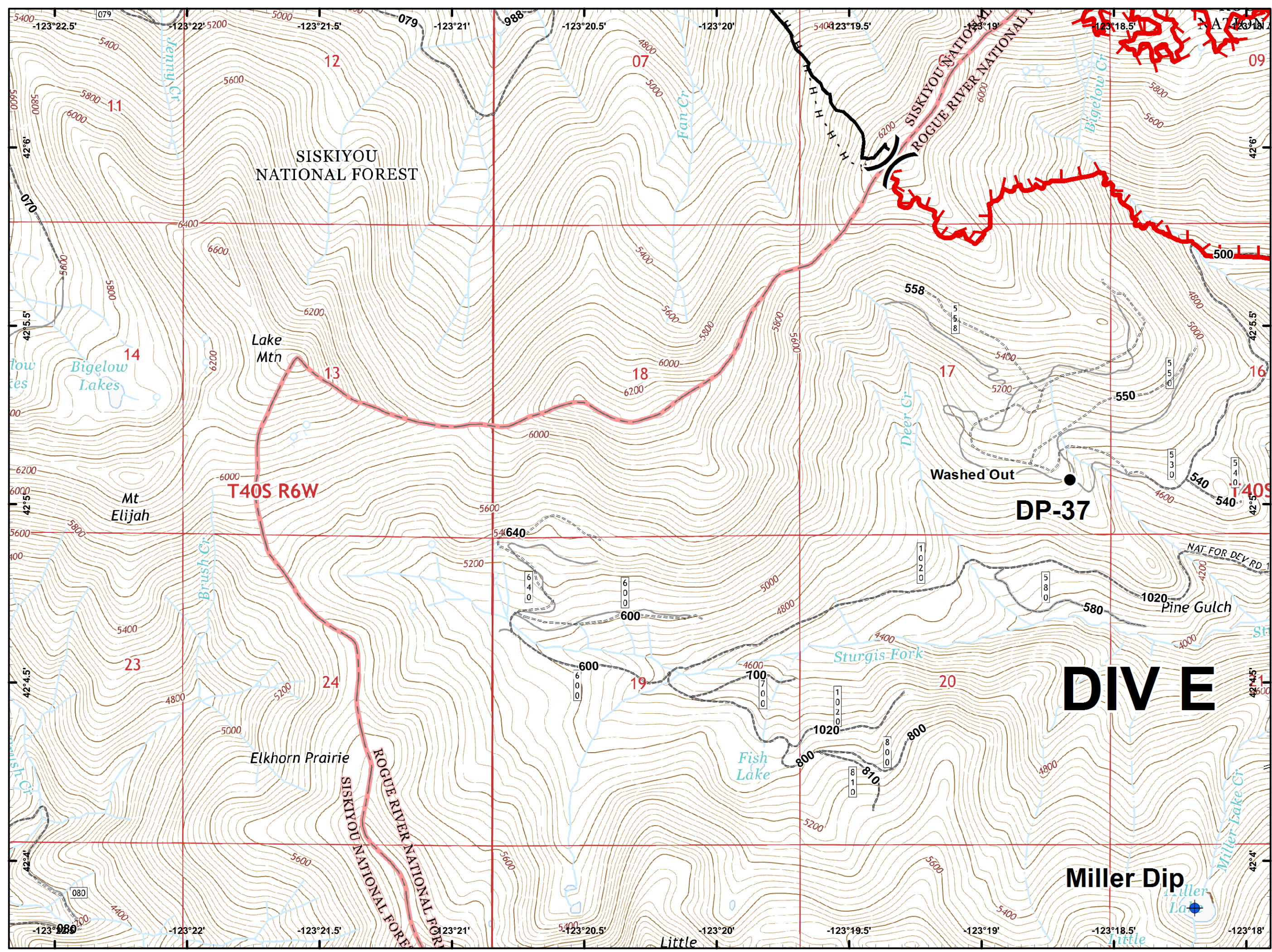
-  Dip Site
-  Drop Point
-  Fire Location
-  Gate
-  Helispot
-  Lookout
-  Repeater
-  Sling Site
-  Water Source
-  Water Tank
-  Division Break
-  IA Responsibility
-  Uncontrolled Fire Edge
-  Completed Line
-  Completed Dozer Line
-  Completed Hand Line
-  Road as Completed Line
-  Administrative Forest Boundary
-  NHD Water Boundaries
-  Rivers
-  Wilderness
-  Private



- Drop Point
- Helispot
- Ⓡ Repeater
- Ⓢ Sling Site
- Ⓜ Water Tank
-)) Division Break
- 🔴 Uncontrolled Fire Edge
- ⤵ Completed Line
- ⓧ Completed Dozer Line
- ⋯ Completed Hand Line
- 👉 IA Responsibility
- ⤵ Closed Roads
- ⤵ High Clearance Vehicles
- ⤵ Improved Roads
- ⤵ Improved Roads
- Ⓜ Private



- Dip Site
- Drop Point
- Division Break
- Uncontrolled Fire Edge
- Completed Line
- Completed Hand Line
- Closed Roads
- High Clearance Vehicles
- Improved Roads



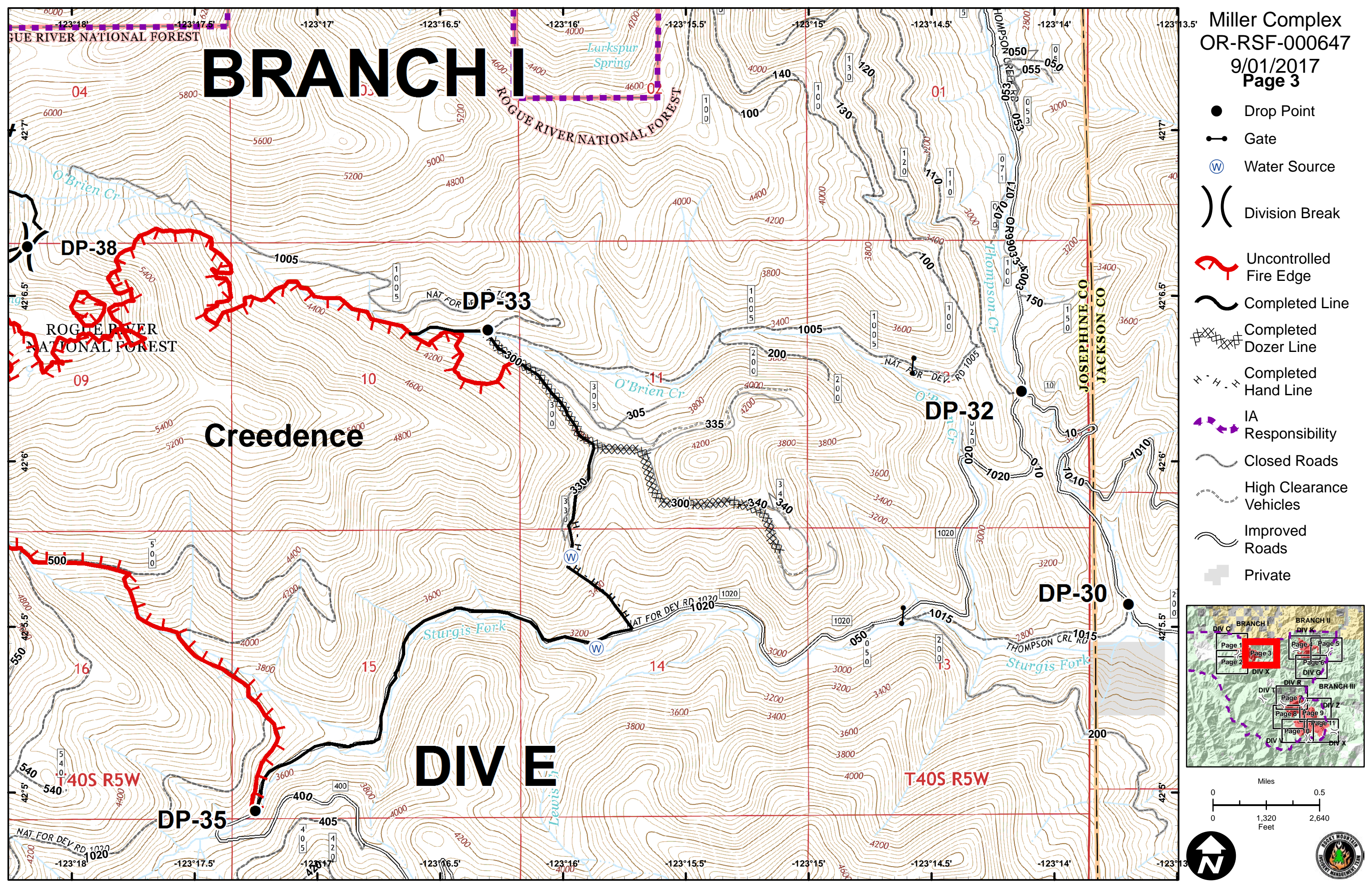
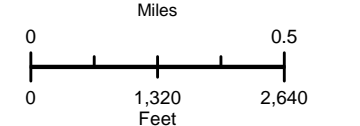
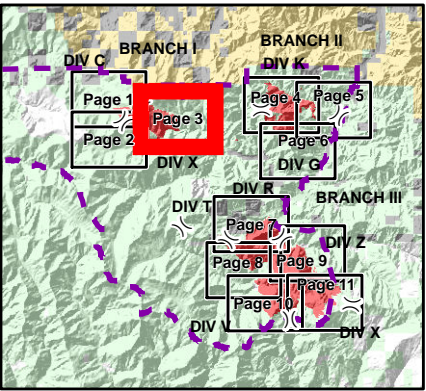
Miles
0 0.5
Feet
0 1,320 2,640

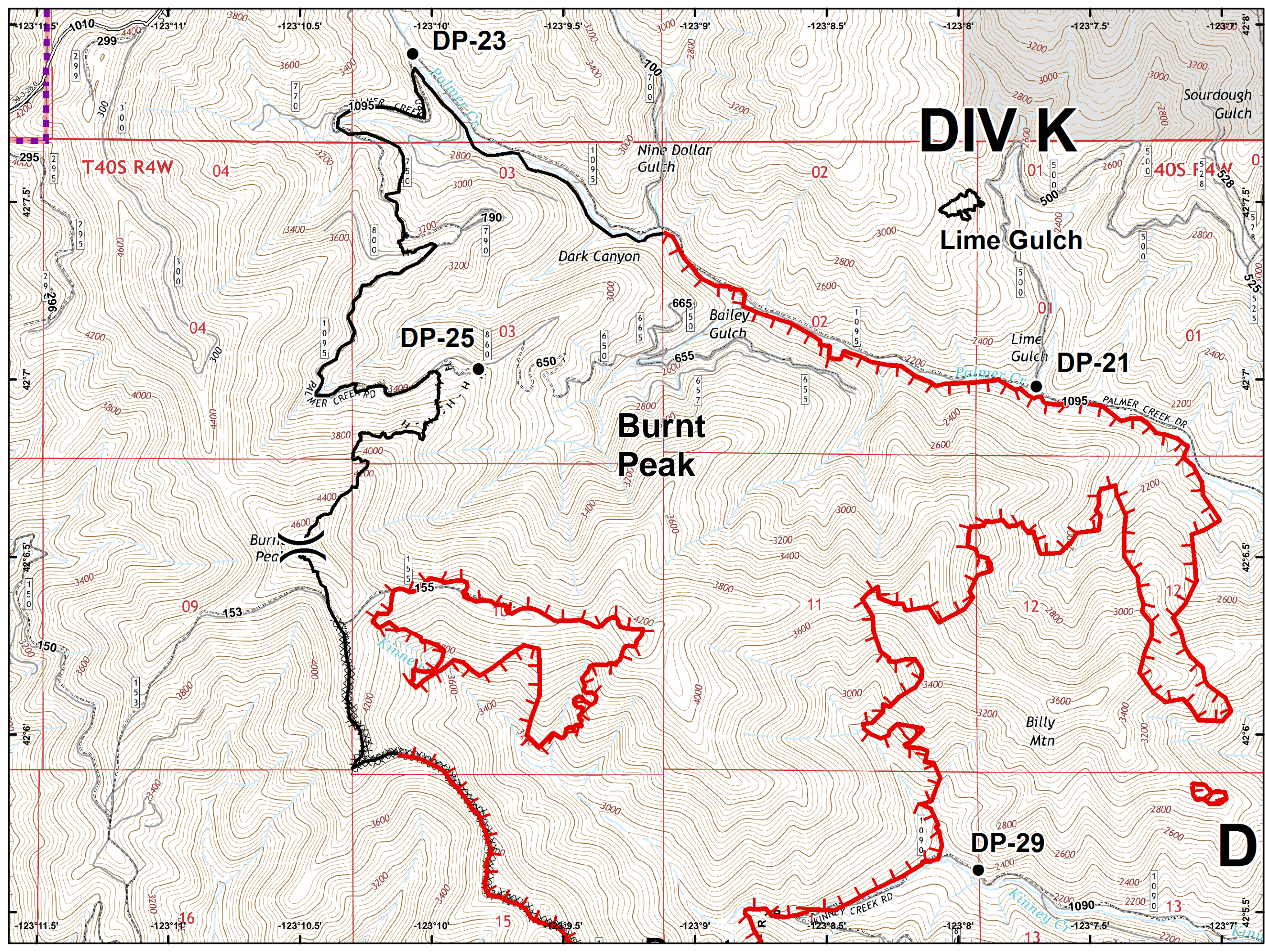
BRANCH I

Creedence

DIV E

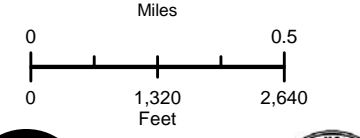
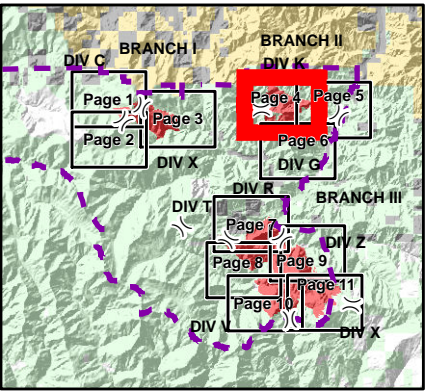
- Drop Point
- Gate
- Ⓜ Water Source
-)) Division Break
- 🔴 Uncontrolled Fire Edge
- ⤵ Completed Line
- ⓧ Completed Dozer Line
- ⋈ Completed Hand Line
- 👉 IA Responsibility
- ⤵ Closed Roads
- ⤵ High Clearance Vehicles
- ⤵ Improved Roads
- ⊕ Private




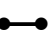



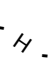


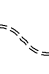






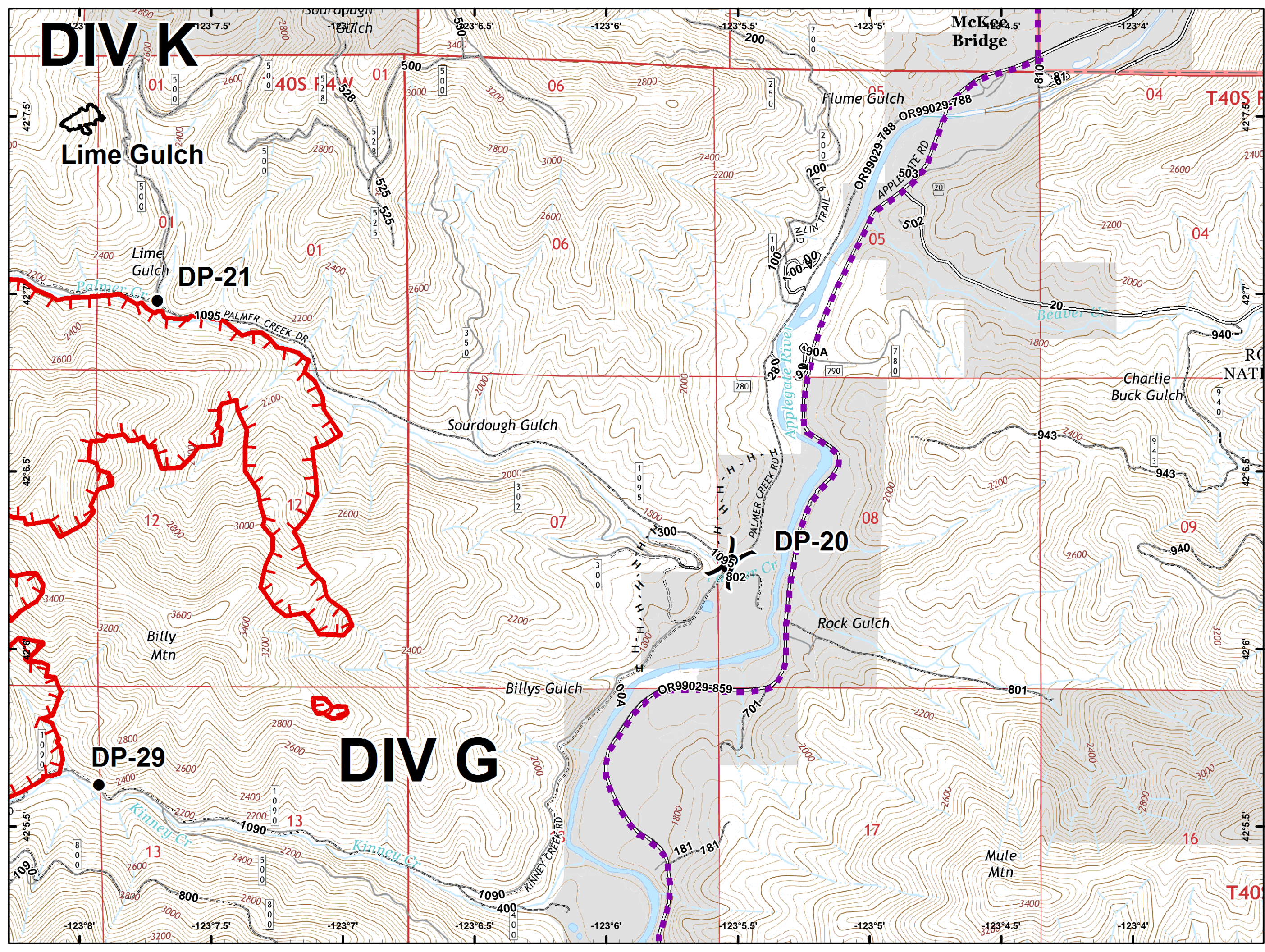
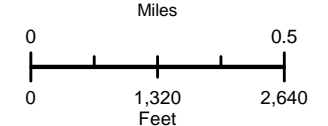
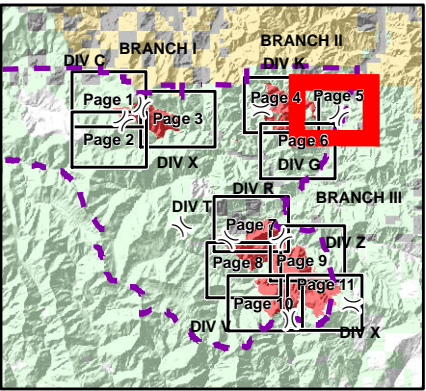
DIV K

- Drop Point
-) (Division Break
- 🔴 Uncontrolled Fire Edge
- ⚫ Completed Line
- ⚫ Completed Dozer Line
- ⚫ Completed Hand Line
- ⚫ Road as Completed Line
- 👉 IA Responsibility
- ⚫ Closed Roads
- ⚫ High Clearance Vehicles
- ⚫ Improved Roads
- ⚫ Improved Roads
- ⚫ Private

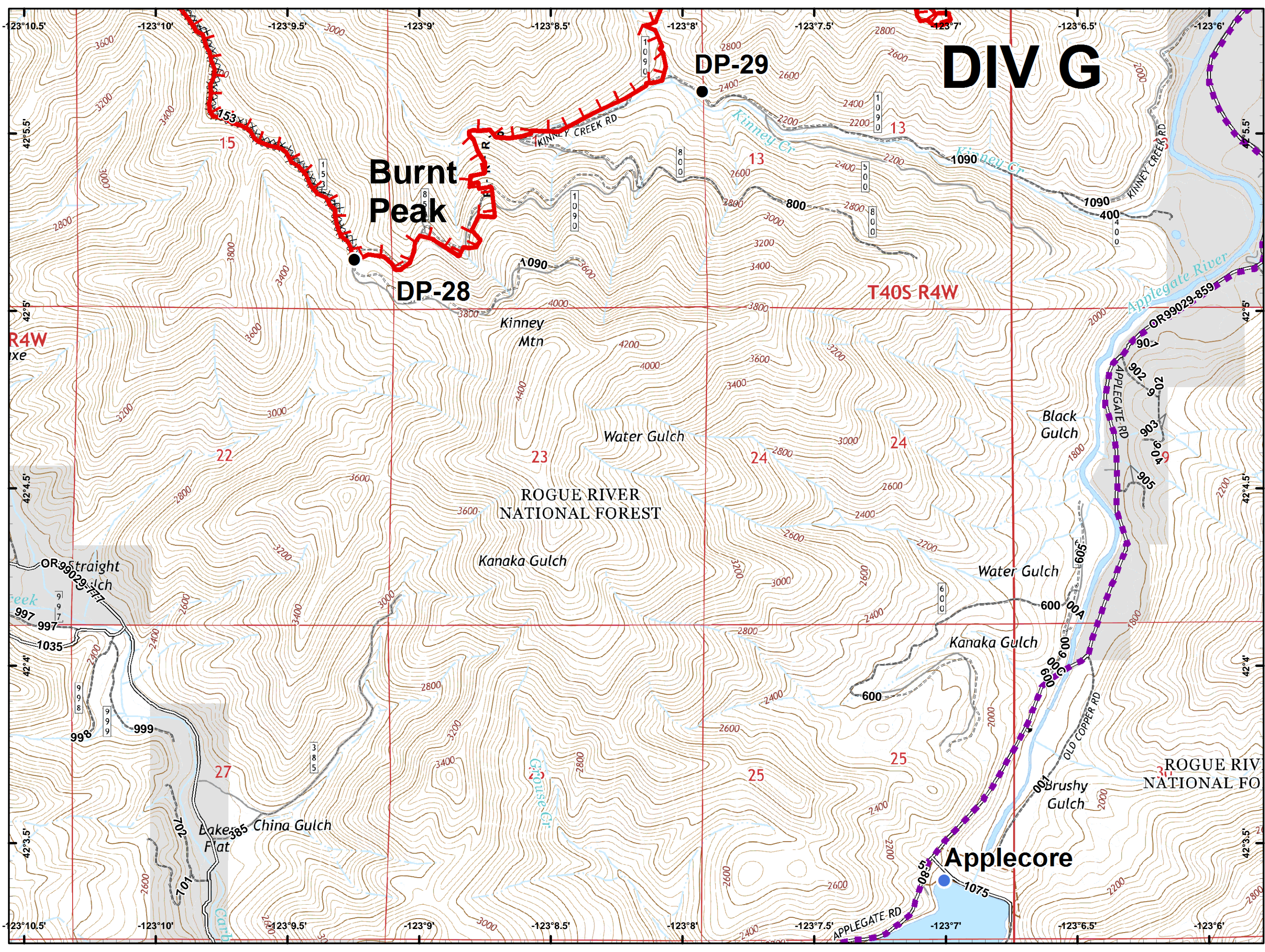


DIV K

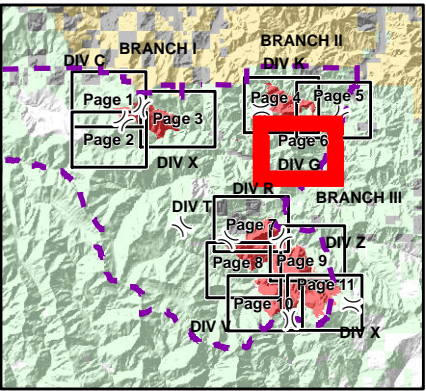
-  Drop Point
-  Gate
-  Division Break
-  Uncontrolled Fire Edge
-  Completed Line
-  Completed Hand Line
-  IA Responsibility
-  Closed Roads
-  High Clearance Vehicles
-  Improved Roads
-  Miller_Compl...
-  Improved Roads
-  Private



DIV G



- Drop Point
- Helispot
- Uncontrolled Fire Edge
- Completed Dozer Line
- R-R-R Road as Completed Line
- IA Responsibility
- Closed Roads
- High Clearance Vehicles
- Improved Roads
- Private

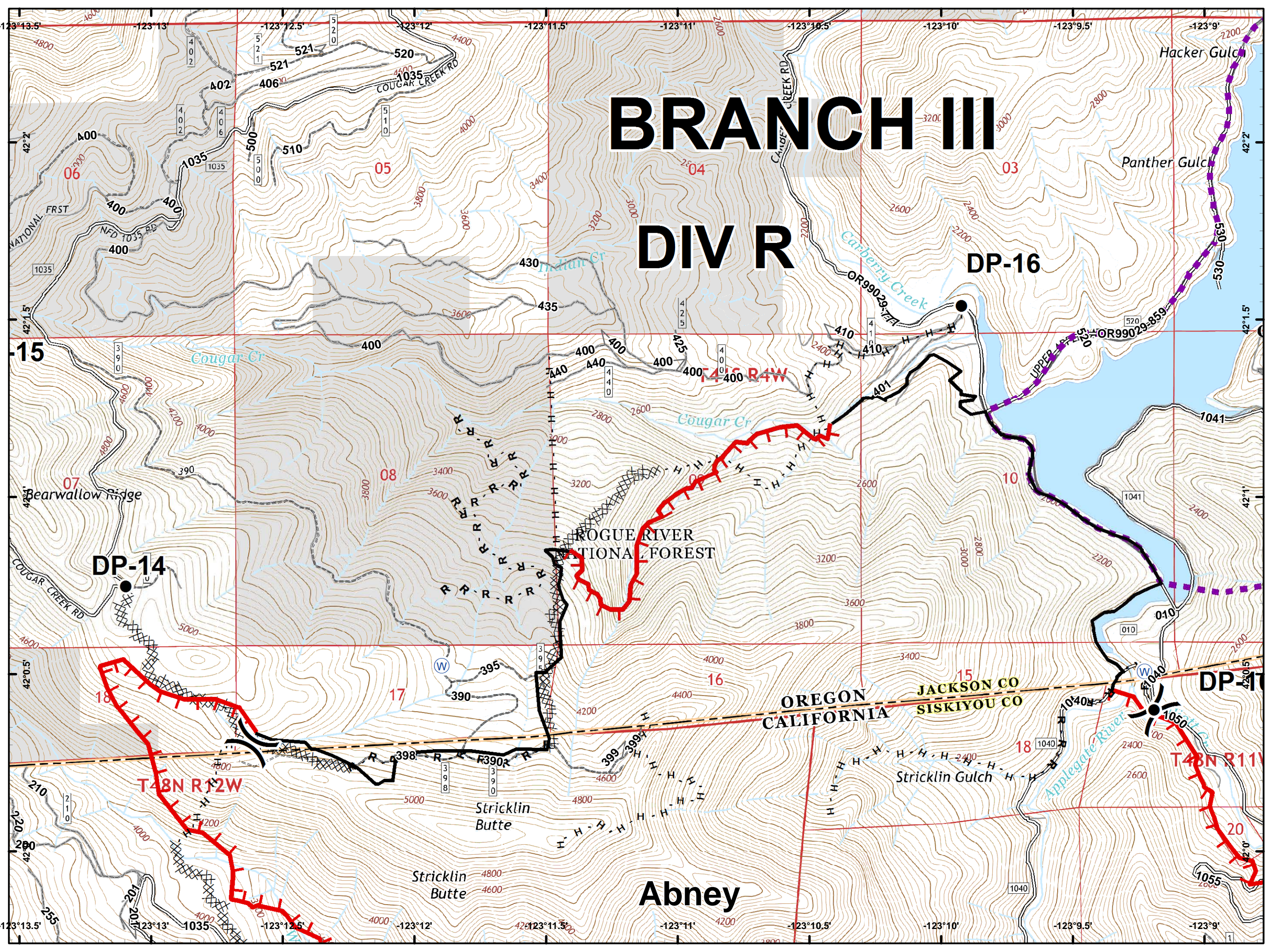


Miles
 0 0.5
 Feet
 0 1,320 2,640

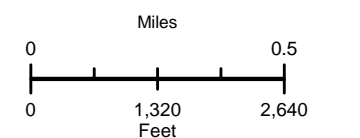
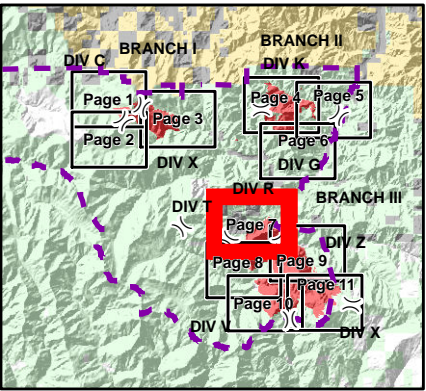
The bottom right corner contains a north arrow pointing upwards and the official logo of the Oregon Department of Forestry, which includes a tree and the text 'OREGON DEPARTMENT OF FORESTRY' and 'FOREST MANAGEMENT'.

BRANCH III

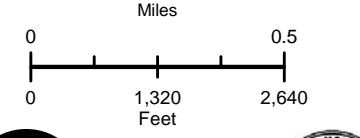
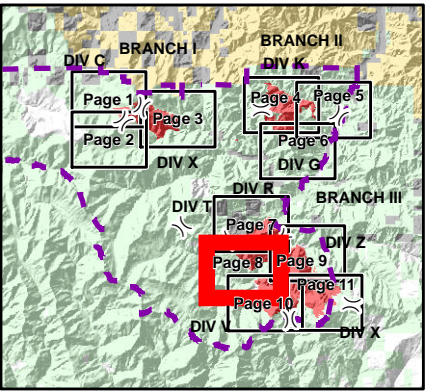
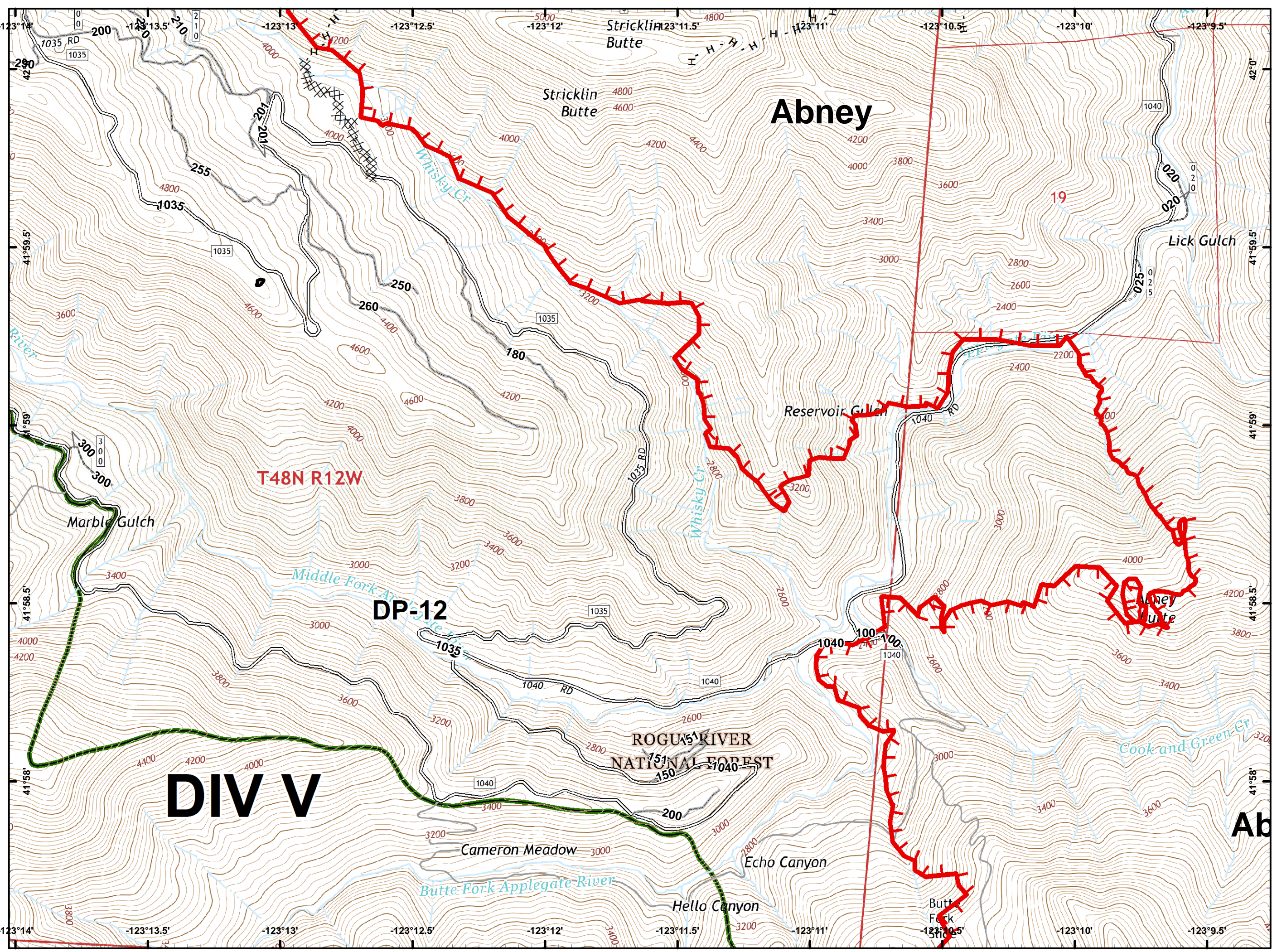
DIV R



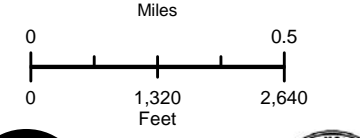
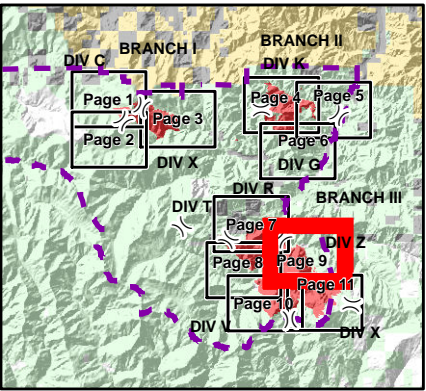
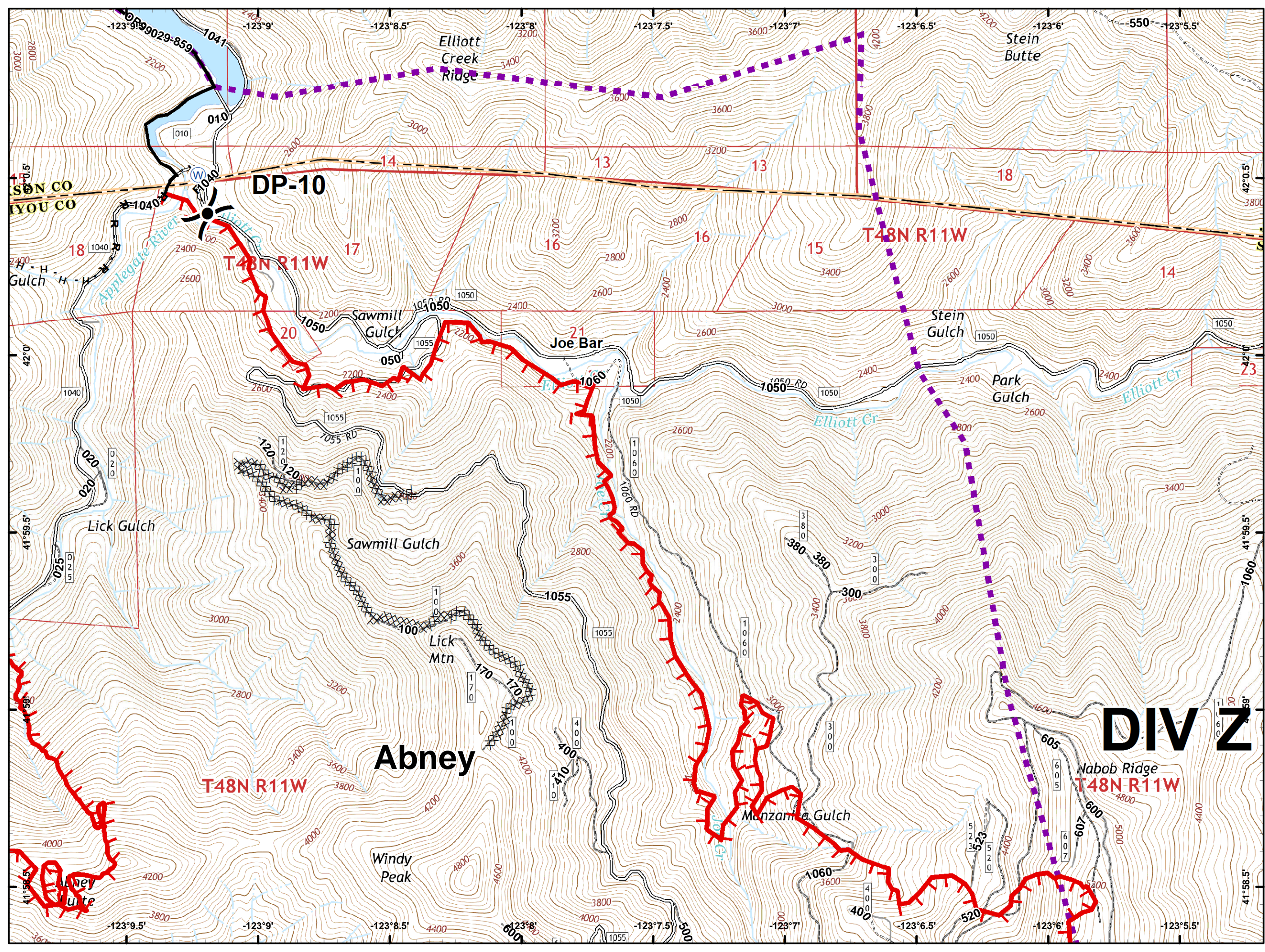
- Drop Point
- Ⓜ Water Source
-)) Division Break
- 🔴 Uncontrolled Fire Edge
- ⤵ Completed Line
- ⊘ Completed Dozer Line
- ⋯ Completed Hand Line
- ⋯ Road as Completed Line
- 👉 IA Responsibility
- ⤵ Closed Roads
- ⋯ High Clearance Vehicles
- ⋯ Improved Roads
- ⊕ Private



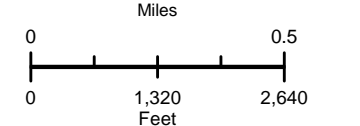
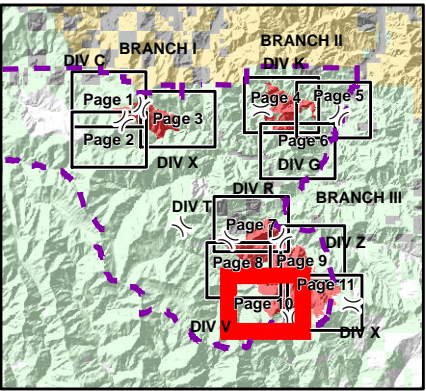
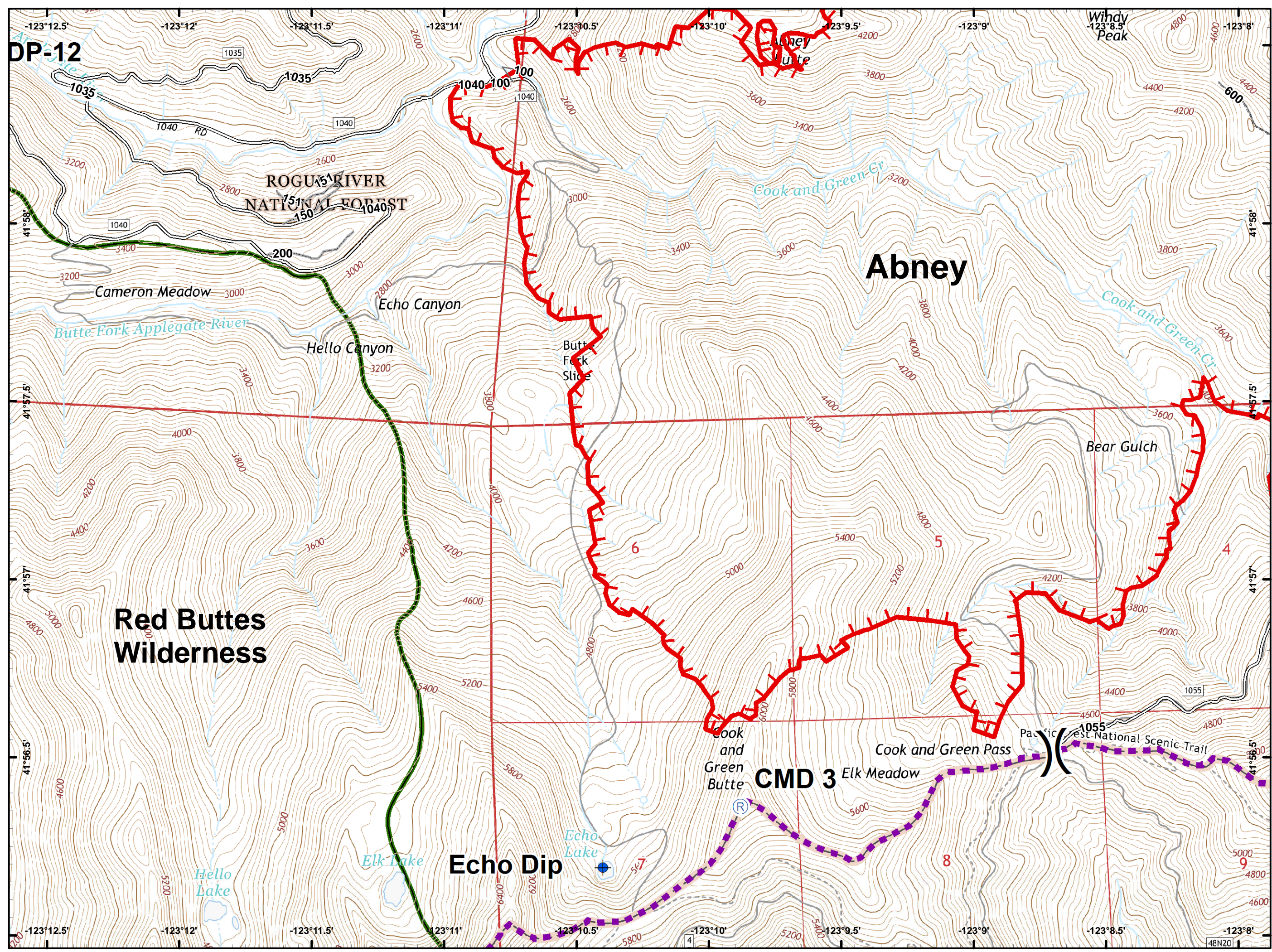
- Drop Point
- Uncontrolled Fire Edge
- Completed Line
- Completed Dozer Line
- Completed Hand Line
- Closed Roads
- High Clearance Vehicles
- Improved Roads
- Wilderness



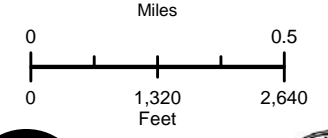
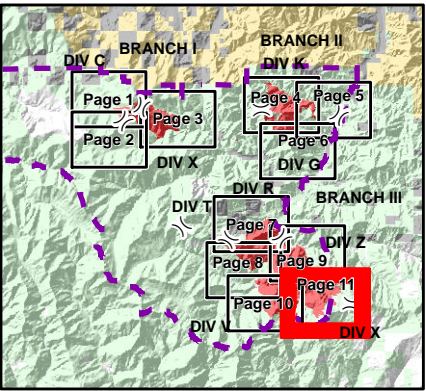
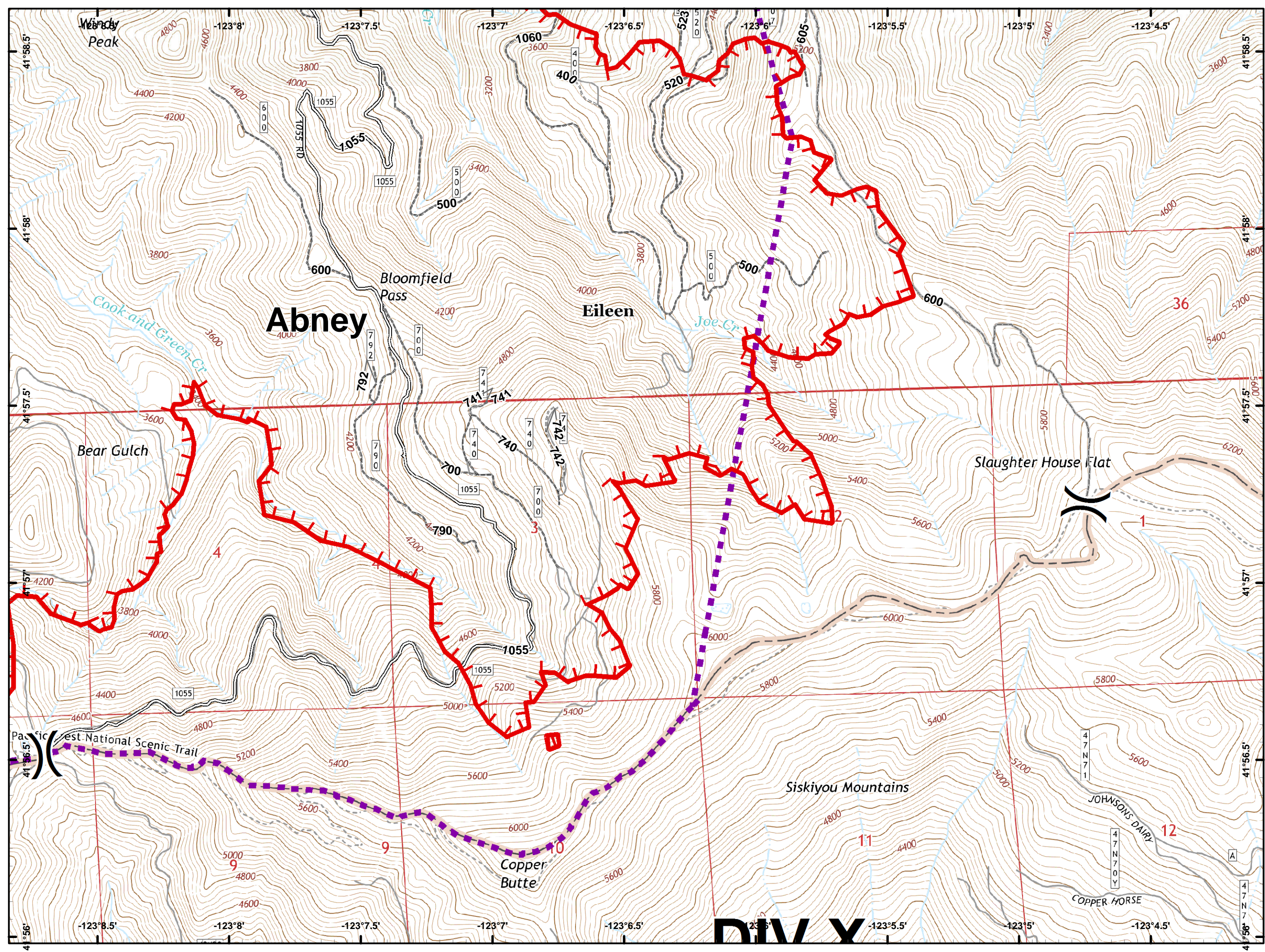
- Drop Point
- Ⓜ Water Source
-) (Division Break
- 🔴 Uncontrolled Fire Edge
- ⤵ Completed Line
- ⊠ Completed Dozer Line
- ⋈ Completed Hand Line
- ⋈ Road as Completed Line
- 👉 IA Responsibility
- ⤵ Closed Roads
- ⋈ High Clearance Vehicles
- ⤵ Improved Roads



- Dip Site
- Drop Point
- Repeater
- Division Break
- Uncontrolled Fire Edge
- IA Responsibility
- Closed Roads
- High Clearance Vehicles
- Improved Roads
- Wilderness



-  Division Break
-  Uncontrolled Fire Edge
-  IA Responsibility
-  Closed Roads
-  High Clearance Vehicles
-  Improved Roads



DIV X