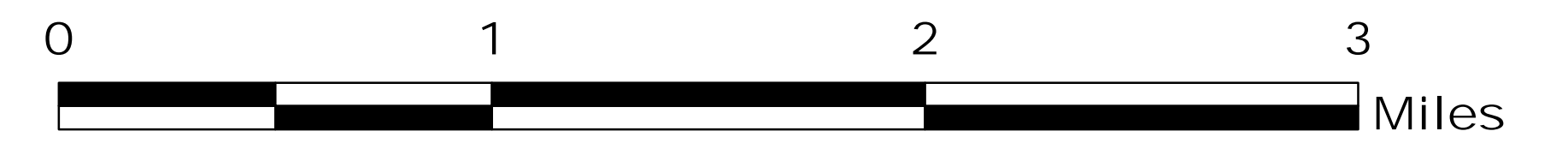
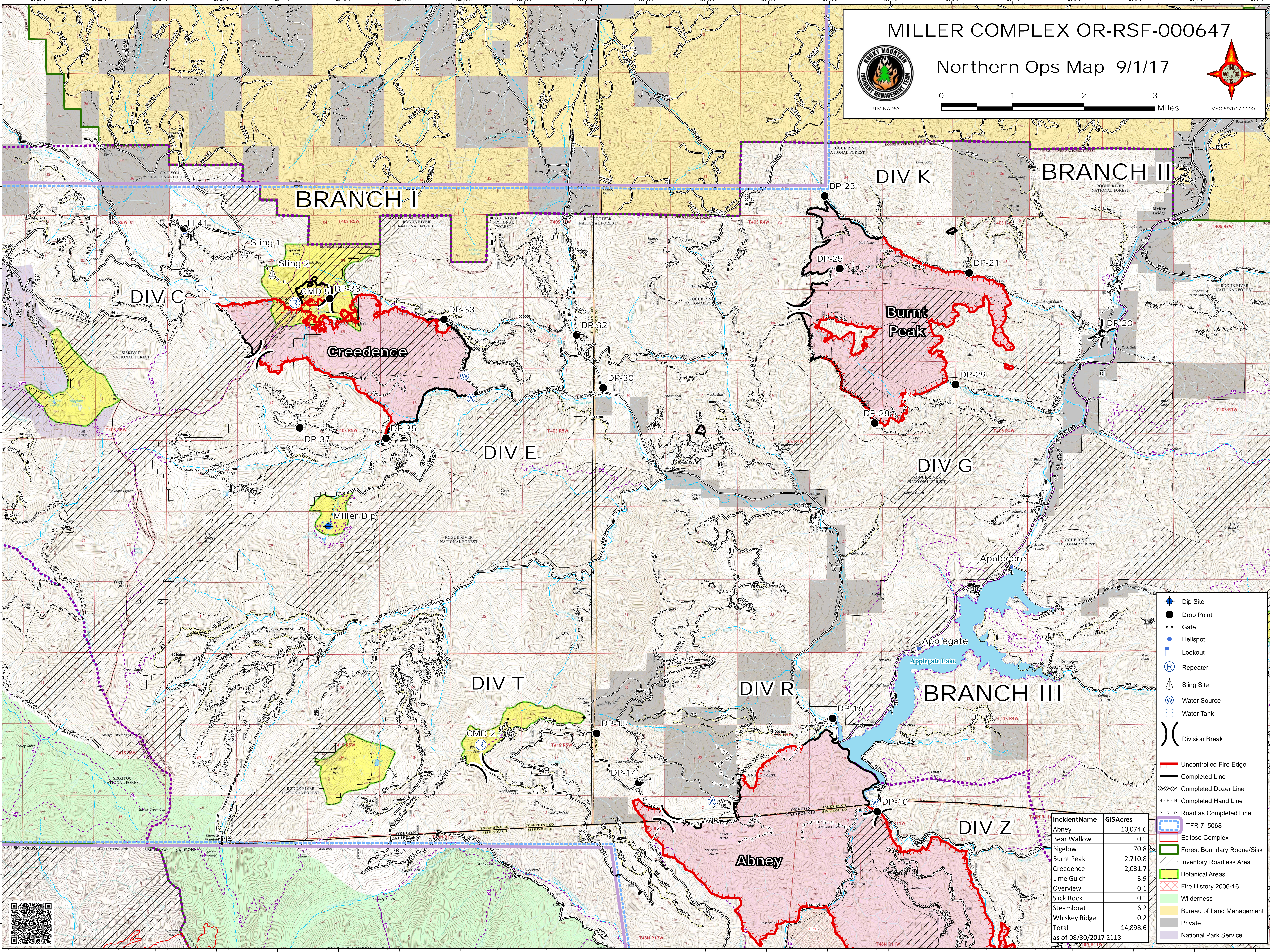


MILLER COMPLEX OR-RSF-000647

Northern Ops Map 9/1/17



MSC 8/31/17 2200



- Dip Site
- Drop Point
- Gate
- Helispot
- Lookout
- Repeater
- Sling Site
- Water Source
- Water Tank
- Division Break

- Uncontrolled Fire Edge
- Completed Line
- Completed Hozer Line
- Completed Hand Line
- Road as Completed Line
- TFR 7-5068
- Eclipse Complex
- Forest Boundary Rogue/Sisk
- Inventory Roadless Area
- Botanical Areas
- Fire History 2006-16
- Wilderness
- Bureau of Land Management
- Private
- National Park Service

IncidentName	GISAcres
Abney	10,074.6
Bear Wallow	0.1
Bigelow	70.8
Burnt Peak	2,710.8
Creedence	2,031.7
Lime Gulch	3.9
Overview	0.1
Slick Rock	0.1
Steamboat	6.2
Whiskey Ridge	0.2
Total	14,898.6
as of 08/30/2017 2118	

