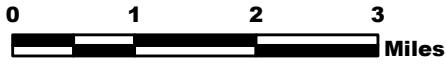


MILLER COMPLEX OR-RSF-000647



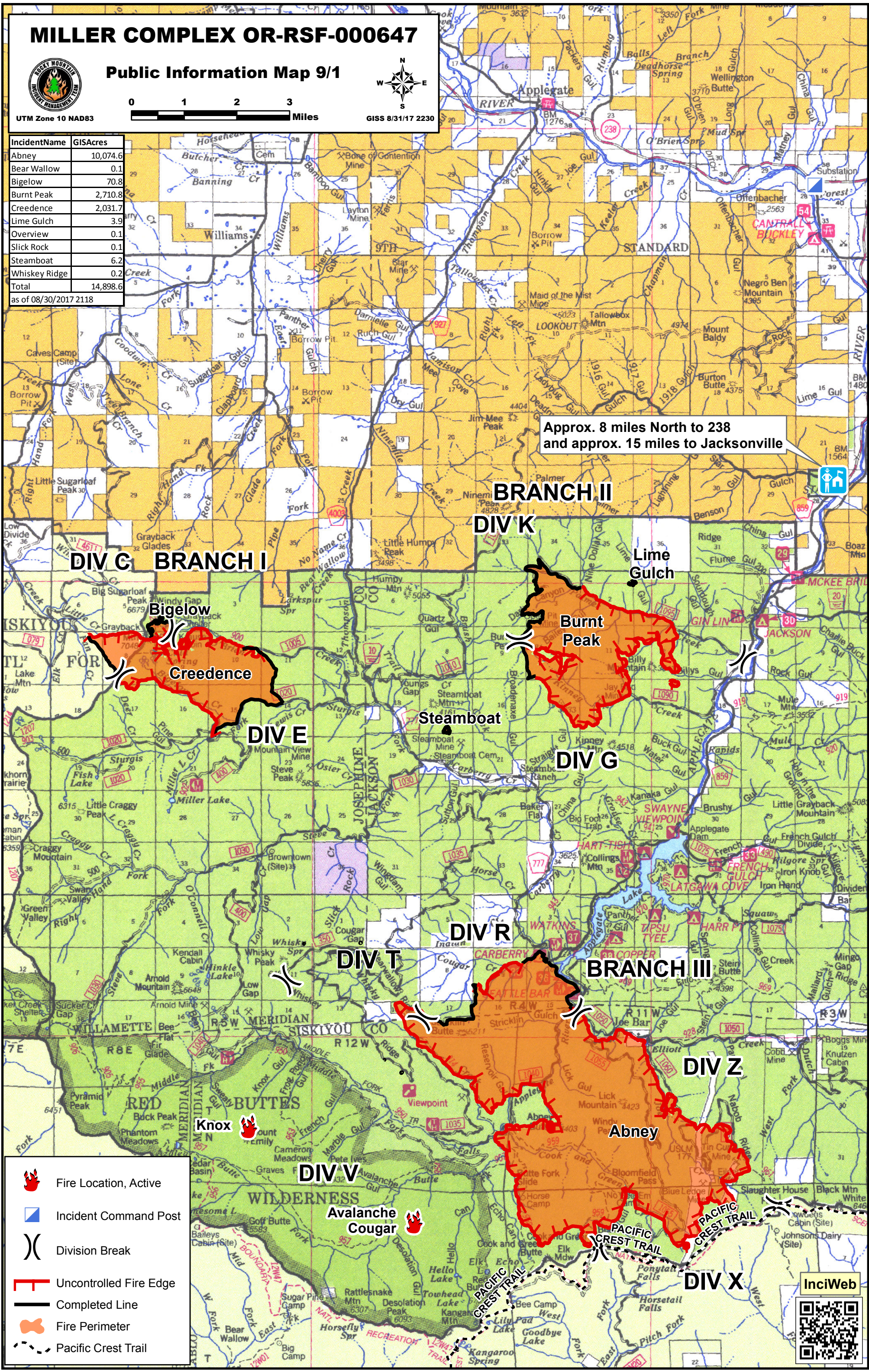
Public Information Map 9/1



UTM Zone 10 NAD83
GISS 8/31/17 2230

IncidentName	GISAcres
Abney	10,074.6
Bear Wallow	0.1
Bigelow	70.8
Burnt Peak	2,710.8
Creedence	2,031.7
Lime Gulch	3.9
Overview	0.1
Slick Rock	0.1
Steamboat	6.2
Whiskey Ridge	0.2
Total	14,898.6

as of 08/30/2017 2118



Approx. 8 miles North to 238 and approx. 15 miles to Jacksonville



DIV G BRANCH I

**BRANCH II
DIV K**

**Bigelow
Creedence**

Burnt Peak

DIV E

Steamboat

DIV G

DIV T

DIV R

BRANCH III

DIV Z

Knox

Abney

**DIV V
Avalanche
Cougar**

DIV X

- Fire Location, Active
- Incident Command Post
- Division Break
- Uncontrolled Fire Edge
- Completed Line
- Fire Perimeter
- Pacific Crest Trail

InciWeb

