

123°28'W 123°26'W 123°24'W 123°22'W 123°20'W 123°18'W 123°16'W 123°14'W 123°12'W 123°10'W 123°8'W 123°6'W 123°4'W 123°2'W 123°0'W 122°58'W

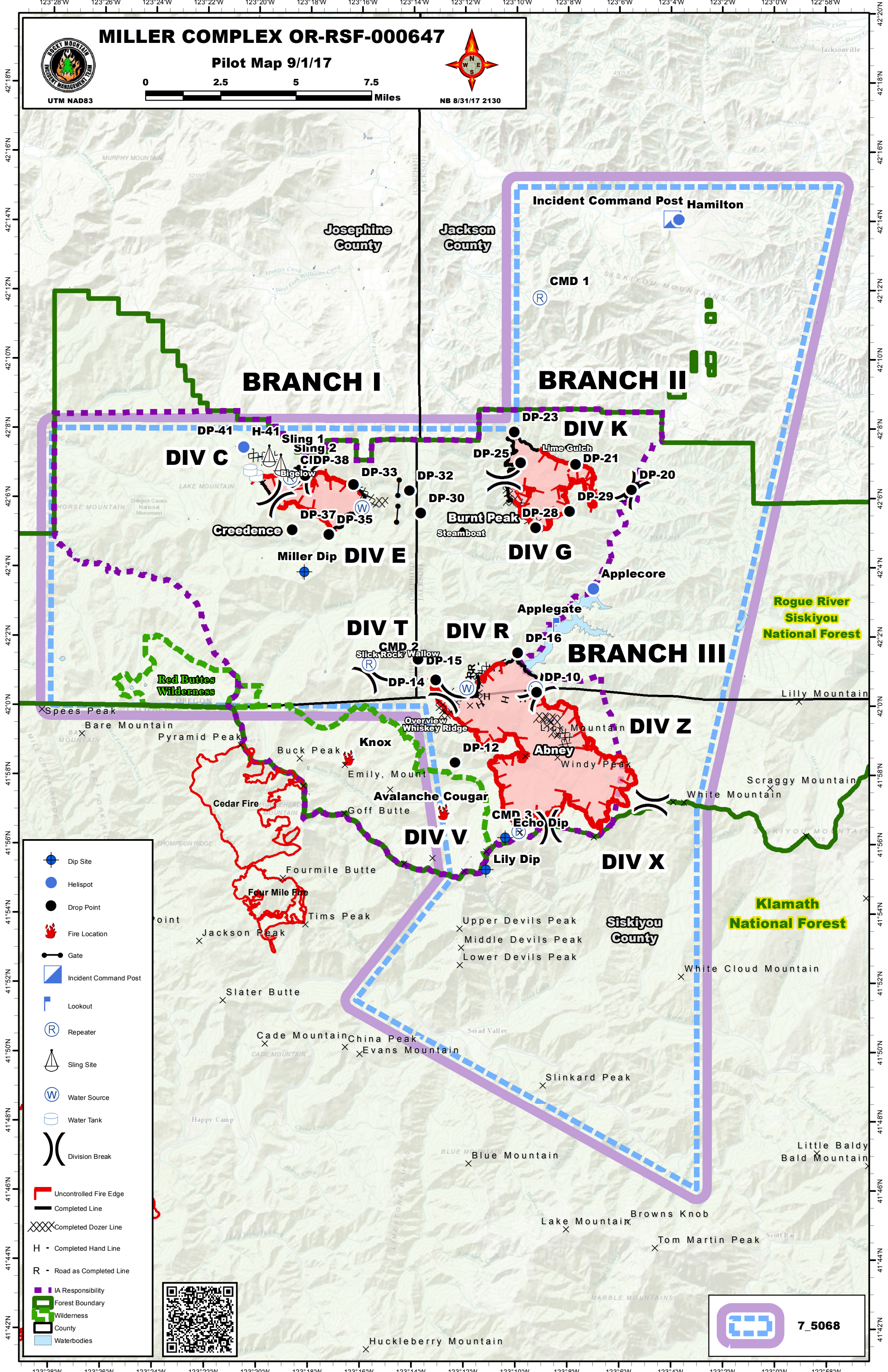


# MILLER COMPLEX OR-RSF-000647

## Pilot Map 9/1/17



NB 8/31/17 2130



- Dip Site
- Helispot
- Drop Point
- Fire Location
- Gate
- Incident Command Post
- Lookout
- Repeater
- Sling Site
- Water Source
- Water Tank
- Division Break
- Uncontrolled Fire Edge
- Completed Line
- Completed Dozer Line
- Completed Hand Line
- Road as Completed Line
- IA Responsibility
- Forest Boundary
- Wilderness
- County
- Waterbodies



7\_5068

42°18'N 42°16'N 42°14'N 42°12'N 42°10'N 42°8'N 42°6'N 42°4'N 42°2'N 42°0'N 41°58'N 41°56'N 41°54'N 41°52'N 41°50'N 41°48'N 41°46'N 41°44'N 41°42'N

123°28'W 123°26'W 123°24'W 123°22'W 123°20'W 123°18'W 123°16'W 123°14'W 123°12'W 123°10'W 123°8'W 123°6'W 123°4'W 123°2'W 123°0'W 122°58'W