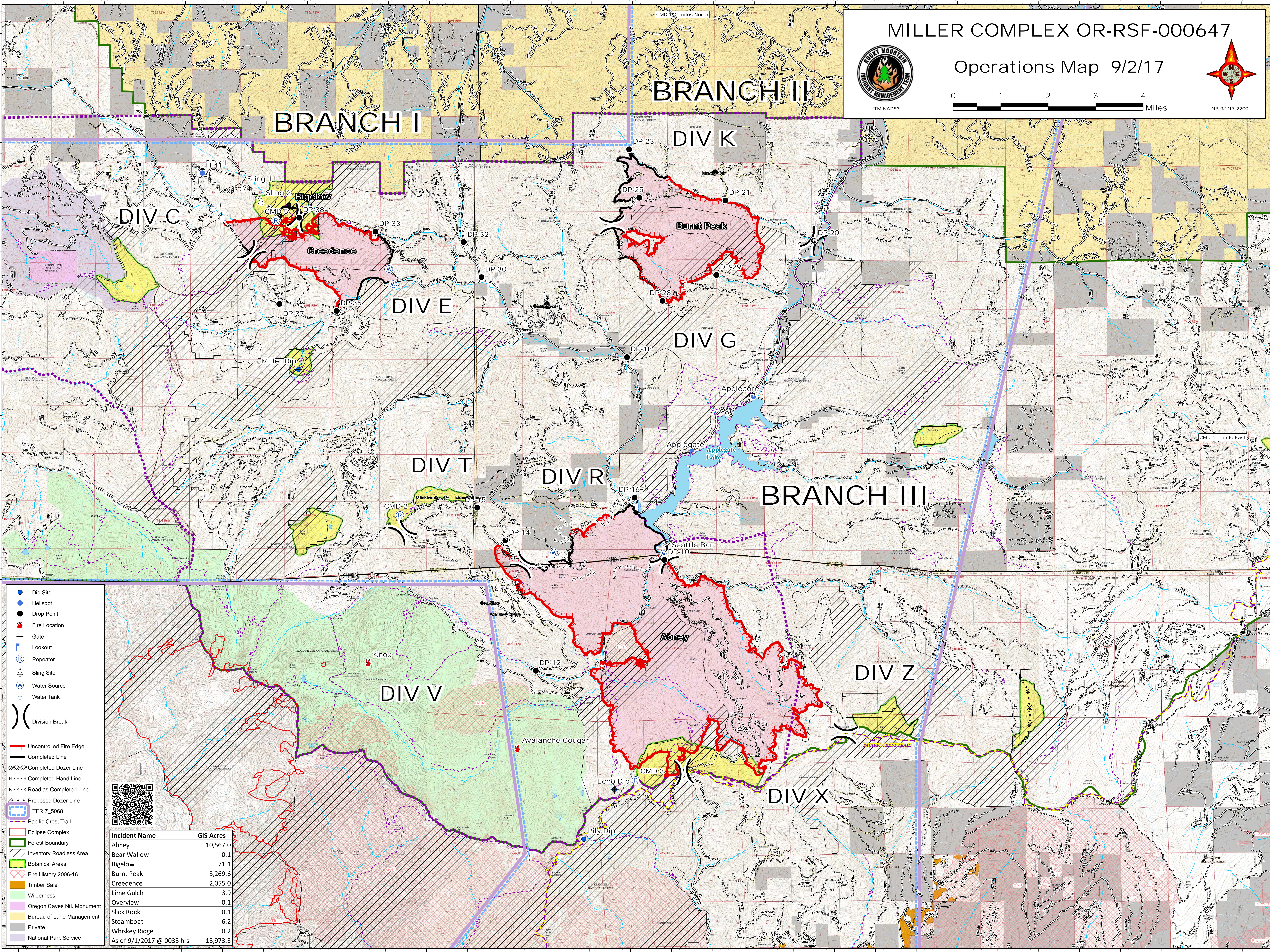


NB 9/1/17 2200



- Dip Site
- Helispot
- Drop Point
- Fire Location
- Gate
- Lookout
- Repeater
- Sling Site
- Water Source
- Water Tank
- Division Break
- Uncontrolled Fire Edge
- Completed Line
- Completed Dozer Line
- Completed Hand Line
- Road as Completed Line
- Proposed Dozer Line
- TFR 7_5068
- Pacific Crest Trail
- Eclipse Complex
- Forest Boundary
- Inventory Roadless Area
- Botanical Areas
- Fire History 2006-16
- Timber Sale
- Wilderness
- Oregon Caves Ntl. Monument
- Bureau of Land Management
- Private
- National Park Service



Incident Name	GIS Acres
Abney	10,567.0
Bear Wallow	0.1
Bigelow	71.1
Burnt Peak	3,269.6
Creedence	2,055.0
Lime Gulch	3.9
Overview	0.1
Slick Rock	0.1
Steamboat	6.2
Whiskey Ridge	0.2
As of 9/1/2017 @ 0035 hrs	15,973.3