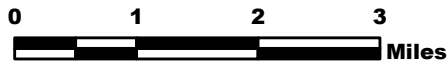


MILLER COMPLEX OR-RSF-000647



Public Information Map 9/2

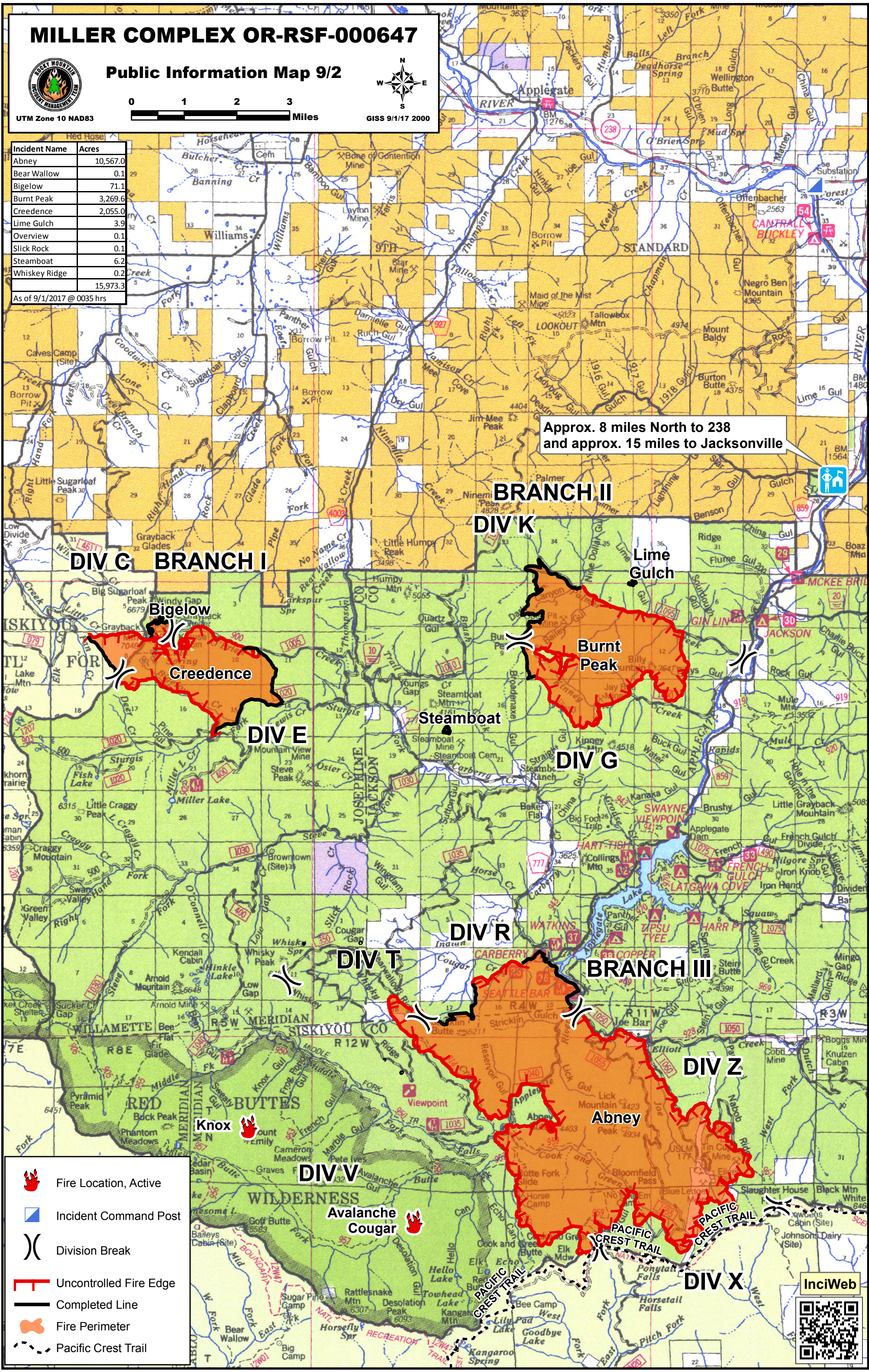


GISS 9/1/17 2000

UTM Zone 10 NAD83

Incident Name	Acres
Abney	10,567.0
Bear Wallow	0.1
Bigelow	71.1
Burnt Peak	3,269.6
Creedence	2,055.0
Lime Gulch	3.9
Overview	0.1
Slick Rock	0.1
Steamboat	6.2
Whiskey Ridge	0.2
	15,973.3

As of 9/1/2017 @ 0035 hrs



Approx. 8 miles North to 238 and approx. 15 miles to Jacksonville



- Fire Location, Active
- Incident Command Post
- Division Break
- Uncontrolled Fire Edge
- Completed Line
- Fire Perimeter
- Pacific Crest Trail

InciWeb

