

123°28'W 123°26'W 123°24'W 123°22'W 123°20'W 123°18'W 123°16'W 123°14'W 123°12'W 123°10'W 123°8'W 123°6'W 123°4'W 123°2'W 123°0'W 122°58'W

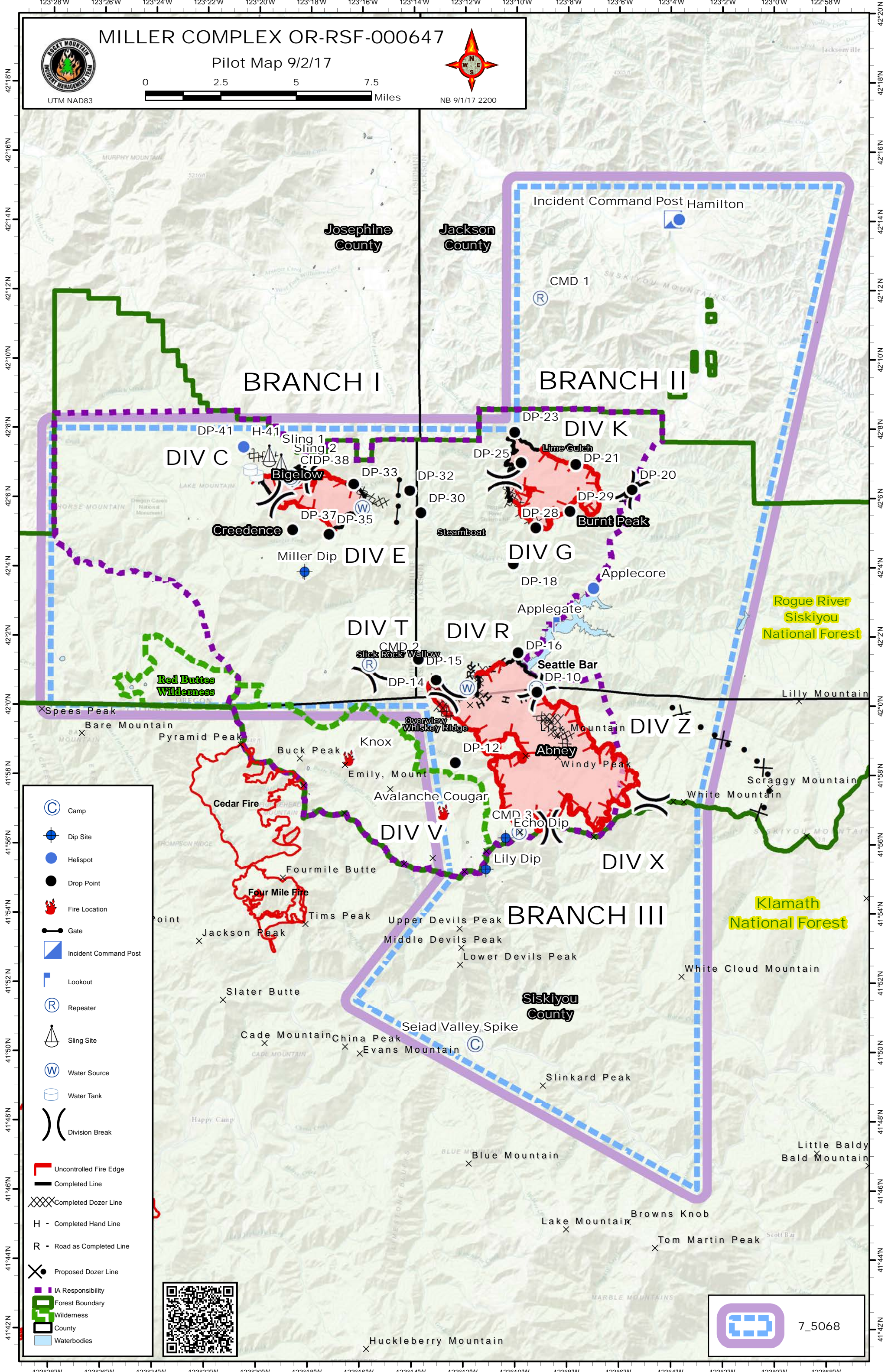


MILLER COMPLEX OR-RSF-000647

Pilot Map 9/2/17



NB 9/1/17 2200



Josephine County

Jackson County

Incident Command Post Hamilton

CMD 1

BRANCH I

BRANCH II

DIV C

DIV K

Creedence

Burnt Peak

DIV E

DIV G

DIV T

DIV R

Red Buttes Wilderness

Rogue River Siskiyou National Forest

Overview Whiskey Ridge

Abney

DIV Z

Cedar Fire

Avalanche Cougar

Seiad Valley Spike

Klamath National Forest

DIV V

DIV X

BRANCH III

Siskiyou County

Cade Mountain

China Peak

Evans Mountain

Slinkard Peak

Blue Mountain

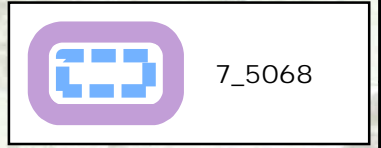
Lake Mountain

Browns Knob

Tom Martin Peak

Huckleberry Mountain

- Camp
- Dip Site
- Helispot
- Drop Point
- Fire Location
- Gate
- Incident Command Post
- Lookout
- Repeater
- Sling Site
- Water Source
- Water Tank
- Division Break
- Uncontrolled Fire Edge
- Completed Line
- Completed Dozer Line
- Completed Hand Line
- Road as Completed Line
- Proposed Dozer Line
- IA Responsibility
- Forest Boundary
- Wilderness
- County
- Waterbodies



42°18'N 42°16'N 42°14'N 42°12'N 42°10'N 42°08'N 42°06'N 42°04'N 42°02'N 42°00'N 41°58'N 41°56'N 41°54'N 41°52'N 41°50'N 41°48'N 41°46'N 41°44'N 41°42'N

123°28'W 123°26'W 123°24'W 123°22'W 123°20'W 123°18'W 123°16'W 123°14'W 123°12'W 123°10'W 123°8'W 123°6'W 123°4'W 123°2'W 123°0'W 122°58'W