

MILLER COMPLEX OR-RSF-000647



Public Information Map 9/3



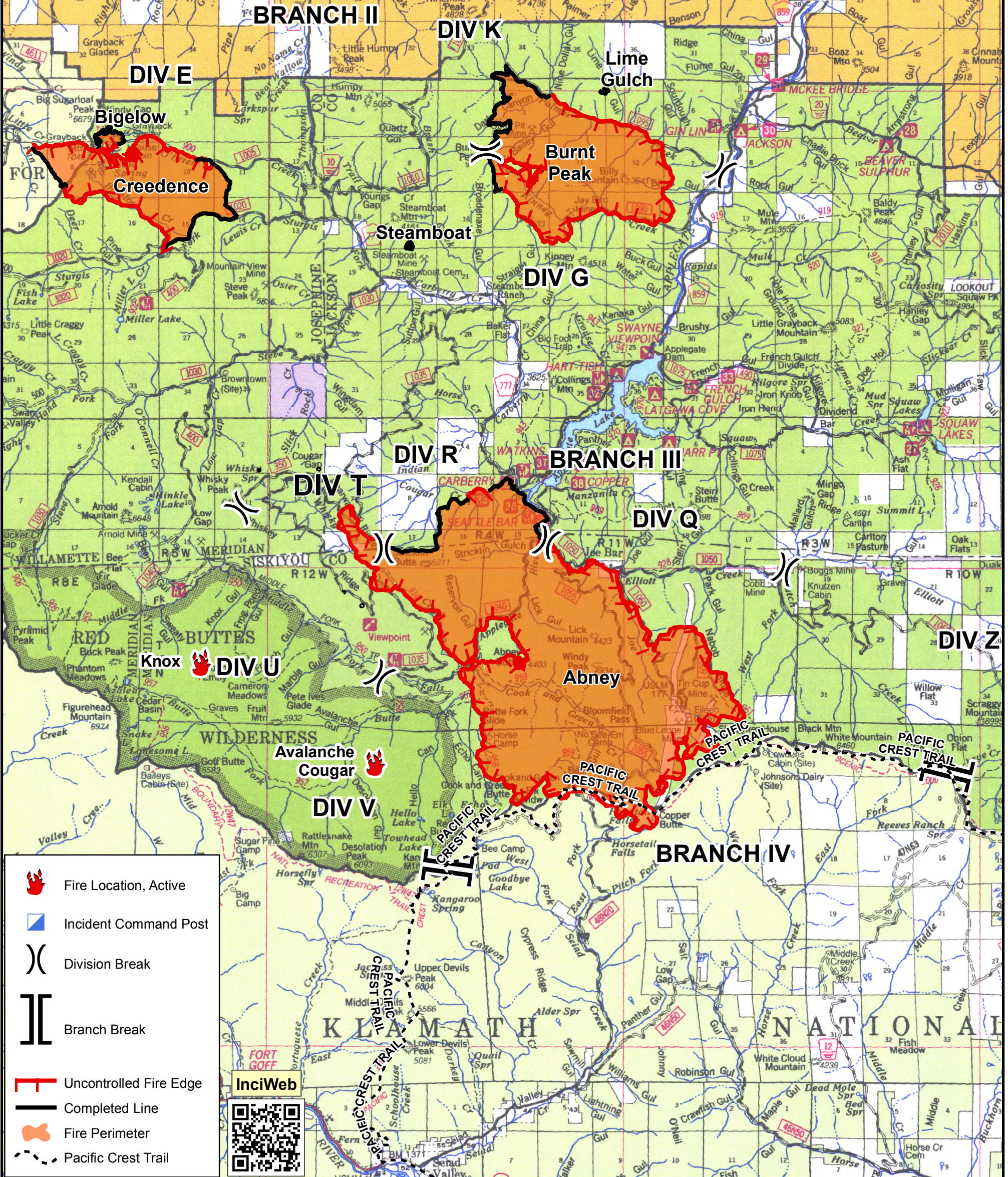
UTM Zone 10 NAD83



Incident Name	Acres
Abney	12,163.9
Bear Wallow	0.1
Bigelow	71.1
Burnt Peak	3,616.2
Creedence	2,063.6
Lime Gulch	3.9
Overview	0.1
Slick Rock	0.1
Steamboat	6.2
Whiskey Ridge	0.2
	17,925.3

As of 9/1/2017 @ 2229

Approx. 8 miles North to 238
and approx. 15 miles to Jacksonville



- Fire Location, Active
- Incident Command Post
- Division Break
- Branch Break
- Uncontrolled Fire Edge
- Completed Line
- Fire Perimeter
- Pacific Crest Trail

