

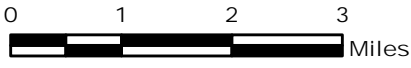
# MILLER COMPLEX OR-RSF-000647



## Public Information Map 9/4



UTM Zone 10 NAD83

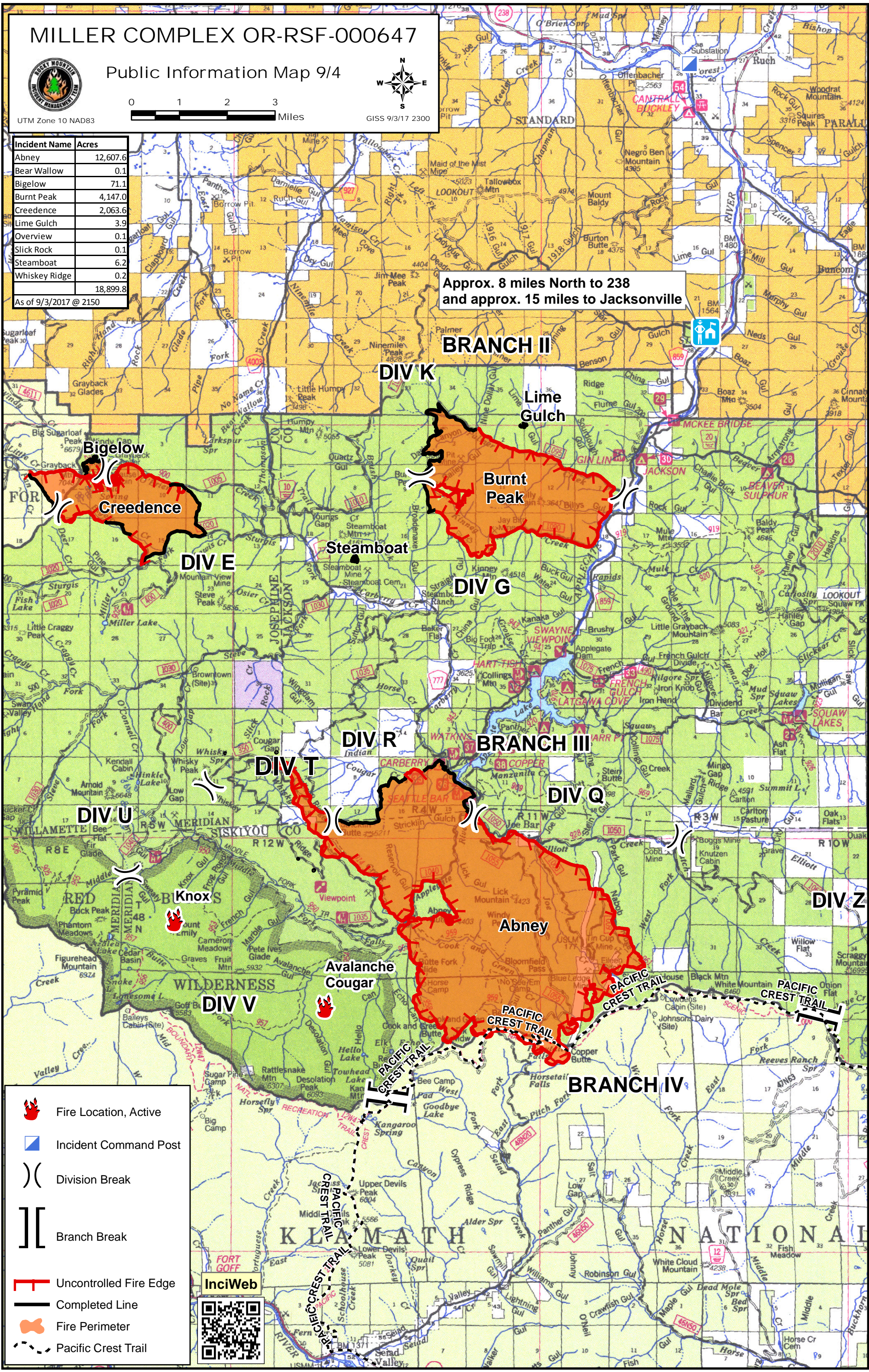


GISS 9/3/17 2300

Incident Name	Acres
Abney	12,607.6
Bear Wallow	0.1
Bigelow	71.1
Burnt Peak	4,147.0
Creedence	2,063.6
Lime Gulch	3.9
Overview	0.1
Slick Rock	0.1
Steamboat	6.2
Whiskey Ridge	0.2
<b>Total</b>	<b>18,899.8</b>

As of 9/3/2017 @ 2150

Approx. 8 miles North to 238  
and approx. 15 miles to Jacksonville



- Fire Location, Active
- Incident Command Post
- Division Break
- Branch Break
- Uncontrolled Fire Edge
- Completed Line
- Fire Perimeter
- Pacific Crest Trail

