

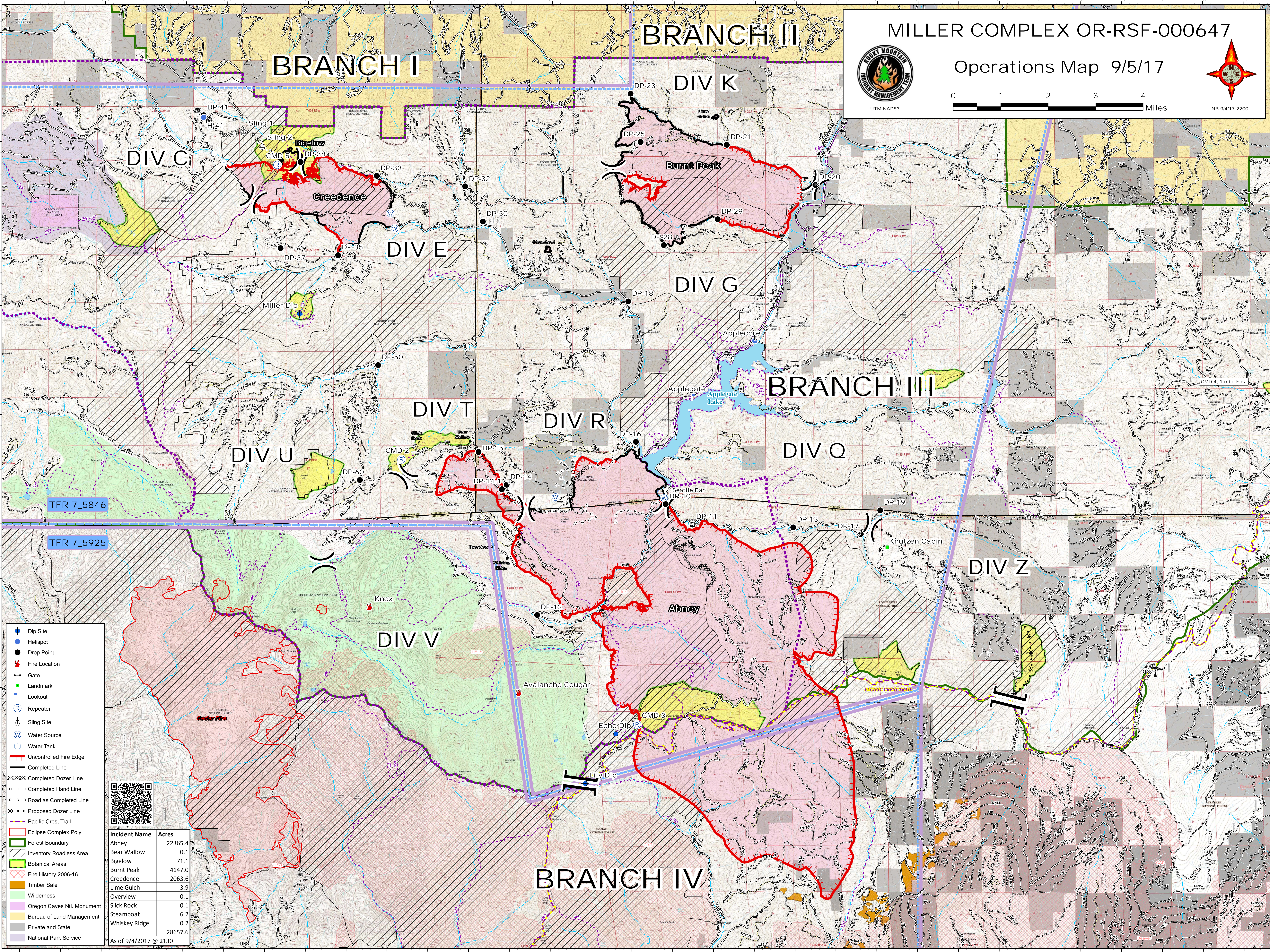
NB 9/4/17 2200

BRANCH I

BRANCH II

BRANCH III

BRANCH IV



TFR 7\_5846

TFR 7\_5925

- Dip Site
- Helispot
- Drop Point
- Fire Location
- Gate
- Landmark
- Lookout
- Repeater
- Sling Site
- Water Source
- Water Tank
- Uncontrolled Fire Edge
- Completed Line
- Completed Dozer Line
- Completed Hand Line
- Road as Completed Line
- Proposed Dozer Line
- Pacific Crest Trail
- Eclipse Complex Poly
- Forest Boundary
- Inventory Roadless Area
- Botanical Areas
- Fire History 2006-16
- Timber Sale
- Wilderness
- Oregon Caves Ntl. Monument
- Bureau of Land Management
- Private and State
- National Park Service



Incident Name	Acres
Abney	22365.4
Bear Wallow	0.1
Bigelow	71.1
Burnt Peak	4147.0
Creedence	2063.6
Lime Gulch	3.9
Overview	0.1
Slick Rock	0.1
Steamboat	6.2
Whiskey Ridge	0.2
	28657.6

As of 9/4/2017 @ 2130